

# 2015 GMC Sierra 2500HD available WiFi WT CREW CAB 4X4 UTILITY

View this car on our website at [workvansandtrucks.com/6625650/ebrochure](http://workvansandtrucks.com/6625650/ebrochure)



Our Price **\$39,450**

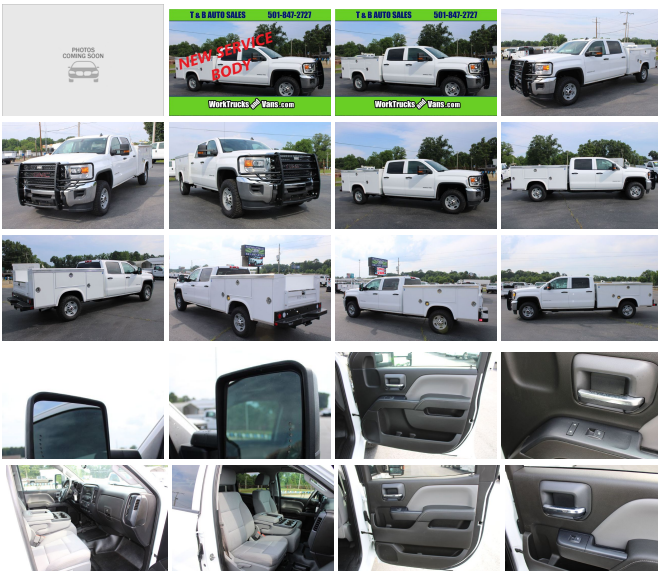
Retail Value **\$39,995**

## Specifications:

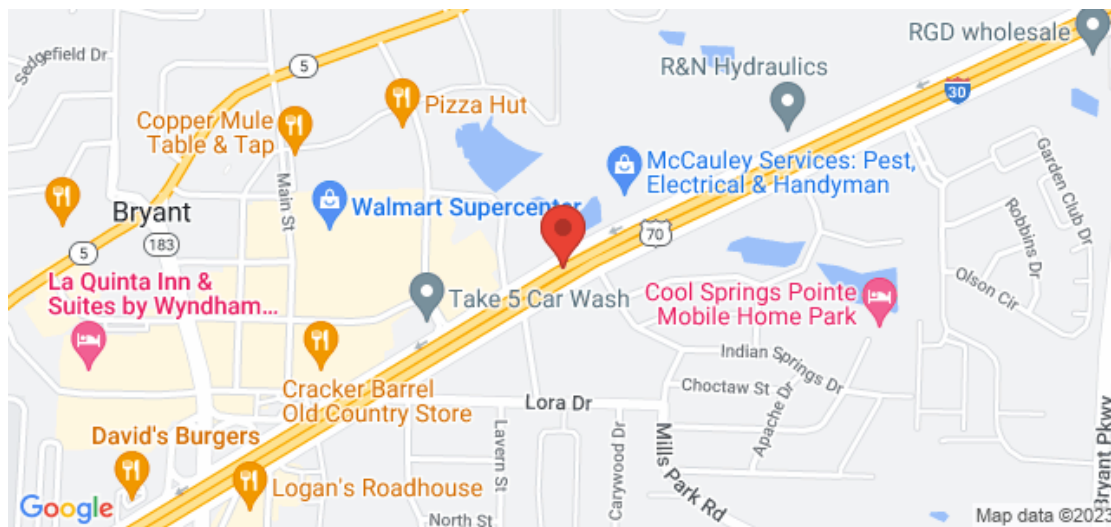
**Year:** 2015  
**VIN:** 1GT12XEG2FF586266  
**Make:** GMC  
**Stock:** U2156  
**Model/Trim:** Sierra 2500HD available WiFi WT CREW CAB 4X4 UTILITY  
**Condition:** Pre-Owned  
**Body:** Pickup Truck  
**Exterior:** WHITE  
**Engine:** ENGINE, VORTEC 6.0L VARIABLE VALVE TIMING V8 SFI E85-COMPATIBLE, FLEXFUEL  
**Interior:** GRAY  
**Mileage:** 54,601  
**Drivetrain:** 4 Wheel Drive

2015 GMC 2500 SIERRA WT CREW CAB 4X4 UTILITY 6.0 GAS ENGINE, AUTOMATIC TRANSMISSION, this 3/4-ton work truck comes with Power Windows, Power Door Locks, Power Mirrors, Tow Mirrors, Cruise Control, Tow Haul Mode, am/fm/xm/cd/radio, Trailer Brake Controller, manual shift 4x4 lever, vinyl floor, cloth seats.

New ROYAL Flip top Service Bed with 6 locking tool bins, Rear Mounted Tow Hitch, Ranch Hand Grille Guard.



## Our Location :



2015 GMC Sierra 2500HD available WiFi WT CREW CAB 4X4 UTILITY

T & B Auto Sales - 501-847-2727 - View this car on our website at [workvansandtrucks.com/6625650/ebrochure](http://workvansandtrucks.com/6625650/ebrochure)

## Installed Options

### Interior

- Seats, front 40/20/40 split-bench, 3-passenger, driver and front passenger recline with outboard head restraints and center fold-down armrest with storage. Vinyl has fixed lumbar and cloth has manually adjustable driver lumbar.
- Seat trim, Cloth
- Seat, rear 60/40 folding bench (folds up), 3-passenger (includes child seat top tether anchor)
- Steering column, manual Tilt-Wheel- Steering wheel
- Floor covering, Graphite-colored rubberized-vinyl
- Instrumentation, 6-gauge cluster featuring speedometer, fuel level, engine temperature, tachometer, voltage and oil pressure
- Driver Information Center, 3.5-inch diagonal monochromatic display provides warning messages and basic vehicle information
- Windows, power with driver express up and down and express down on all other windows
- Door locks, power- Cruise control, steering wheel-mounted- Air conditioning, single-zone
- Assist handle, front passenger and driver on A-pillars

### Exterior

- Bumper, front chrome- CornerStep, rear bumper (Requires (E63) pickup box.)
- Bumper, rear chrome with bumper CornerSteps (Requires (E63) pickup box.)
- Grille surround, chrome- Headlamps, halogen projector
- Lamps, cargo area, cab mounted with switch on center switch bank
- Mirrors, outside manual, Black- Glass, solar absorbing, tinted- Door handles, Black
- Tailgate and bed rail protection caps, top
- Tailgate, locking, utilizes same key as ignition and door (Deleted with (ZW9) pickup box delete.) (Deleted when (ZW9) pickup box delete is ordered.)
- Tire carrier lock keyed cylinder lock that utilizes same key as ignition and door (Not included when (ZW9) pickup box delete or (9J4) rear bumper delete is ordered.)
- Wheels, 17" x 7.5" (43.2 cm x 19.1 cm) full-size, steel spare Spare not included with (ZW9) pickup box delete unless a spare tire is ordered. (Requires 17" wheels and tires.)
- Tires. LT245/75R17E all-season. blackwall

- Wheels, 17" (43.2 cm) steel includes 17" x 7.5" (43.2 cm x 19.1 cm) steel spare wheel. Spare not included with (ZW9) pickup box delete unless a spare tire is ordered.

## Safety

- Seats, front 40/20/40 split-bench, 3-passenger, driver and front passenger recline with outboard head restraints and center fold-down armrest with storage. Vinyl has fixed lumbar and cloth has manually adjustable driver lumbar.
- Seat trim, Cloth
- Seat, rear 60/40 folding bench (folds up), 3-passenger (includes child seat top tether anchor)
- Steering column, manual Tilt-Wheel- Steering wheel
- Floor covering, Graphite-colored rubberized-vinyl
- Instrumentation, 6-gauge cluster featuring speedometer, fuel level, engine temperature, tachometer, voltage and oil pressure
- Driver Information Center, 3.5-inch diagonal monochromatic display provides warning messages and basic vehicle information
- Windows, power with driver express up and down and express down on all other windows
- Door locks, power- Cruise control, steering wheel-mounted- Air conditioning, single-zone
- Assist handle, front passenger and driver on A-pillars

## Mechanical

- Exhaust, aluminized stainless-steel muffler and tailpipe
- Brakes, 4-wheel antilock, 4-wheel disc with DuraLife brake rotors
- Steering, Recirculating Ball
- Cargo tie downs (4), movable upper (Requires (E63) pickup box.) (Not available with (ZW9) pickup box delete.)
- Recovery hooks, front, frame-mounted, black
- Frame, fully-boxed, hydroformed front section- Alternator, 150 amps
- Battery, heavy-duty 720 cold-cranking amps/80 Amp-hr, maintenance-free with rundown protection and retained accessory power
- Cooling, auxiliary external transmission oil cooler- Cooling, external engine oil cooler
- Four wheel drive- Differential, heavy-duty locking rear
- Transfer case, with floor-mounted shifter (included with 4WD models only.)
- Air cleaner, high-capacity
- GVWR, 9900 lbs. (4490 kg) (Requires (L96) Vortec 6.0L V8 SFI engine or (LC8) 6.0L V8 SFI Gaseous engine on TK25943 models. Not available on 2WD Crew Cab models.)
- Pickup box, Wideside
- Suspension Package, Handling/Trailer, heavy-duty includes 51 mm twin tube shock absorbers and 33mm front stabilizer bar
- Rear axle, 4.10 ratio (Requires (L96) Vortec 6.0L V8 SFI engine or (LC8) 6.0L V8 SFI Gaseous CNG (Compressed Natural Gas) engine.)
- Transmission, 6-speed automatic, heavy-duty, electronically controlled with overdrive and tow/haul mode. Includes Cruise Grade Braking and Powertrain Grade Braking (Requires (L96) Vortec 6.0L V8 SFI engine or (LC8) 6.0L V8 SFI Gaseous engine.)
- Engine, Vortec 6.0L Variable Valve Timing V8 SFI E85-compatible, FlexFuel capable of running on unleaded or up to 85% ethanol (360 hp [268.4 kW] @ 5400 rpm, 380 lb-ft of torque [515.0 N-m] @ 4200 rpm) with (E63) fleetside pickup box; (322 hp [240.1 kW] @ 4400 rpm, 380 lb-ft of torque [515.0 N-m] @ 4200 rpm) with (ZW9) pickup box delete (Does not include E85 capability with (ZW9) pickup box delete.)

## Option Packages

### Factory Installed Packages

#### ENGINE, VORTEC 6.0L VARIABLE VALVE TIMING V8 SFI E85-COMPATIBLE, FLEXFUEL

capable of running on unleaded or up to 85% ethanol (360 hp [268.4 kW] @ 5400 rpm, 380 lb-ft of torque [515.0 N-m] @ 4200 rpm) with (E63) fleetside pickup box; (322 hp [240.1 kW] @ 4400 rpm, 380 lb-ft of torque [515.0 N-m] @ 4200 rpm) with (ZW9) pickup box delete



[workvansandtrucks.com](http://workvansandtrucks.com)

501-847-2727

25637 I-30

Bryant, AR 72022

© 2023 AutoRevo - All rights reserved. - Powered by AutoRevo