

# 2006 Nissan Titan XE

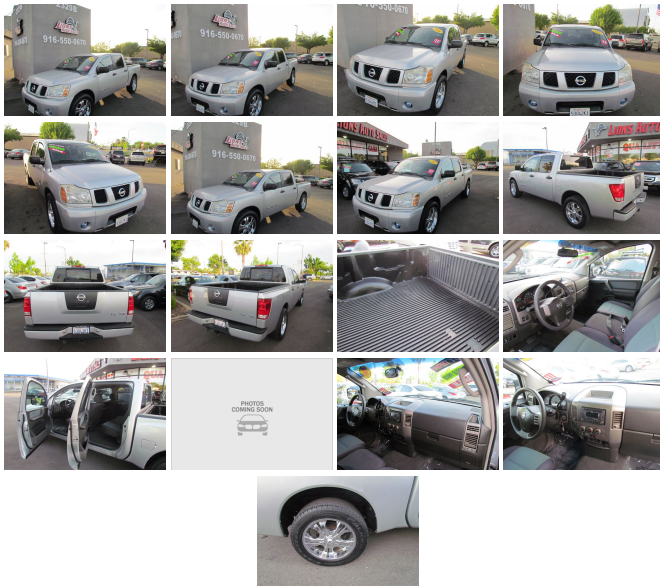
View this car on our website at [lionsautosales.net/6622782/ebrochure](http://lionsautosales.net/6622782/ebrochure)



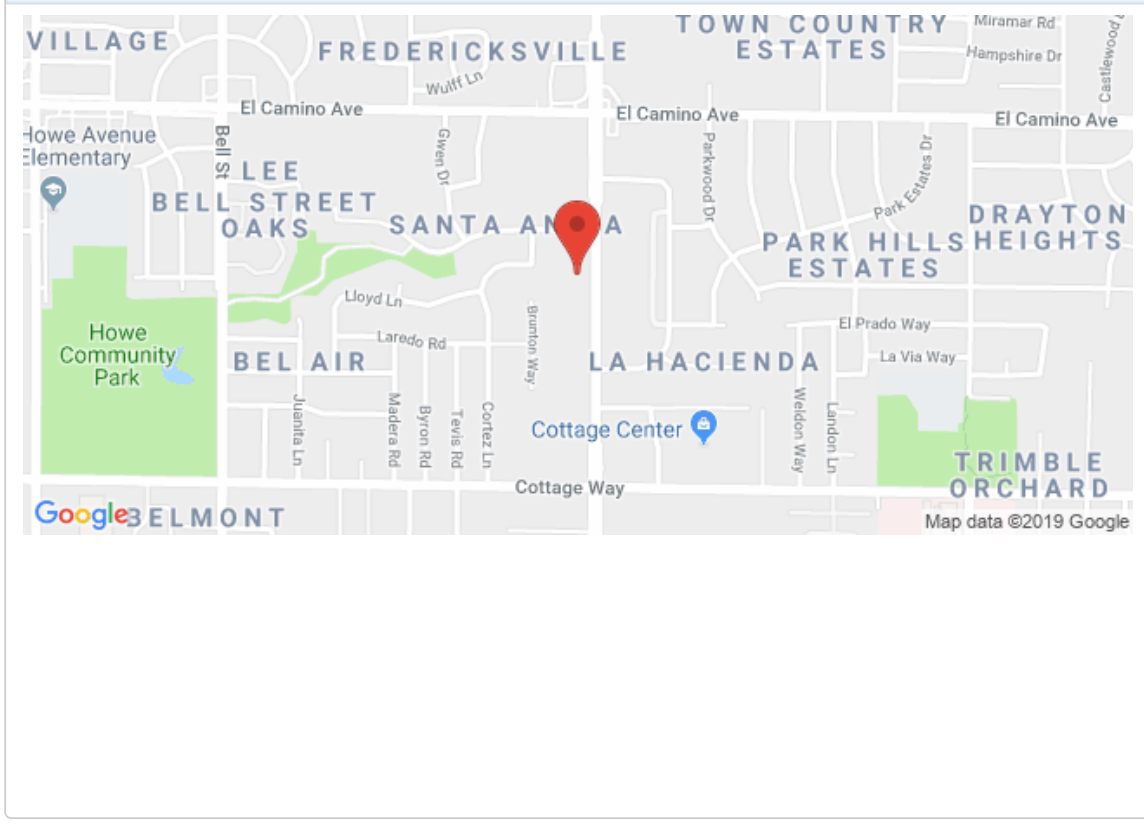
Our Price **\$9,985**

## Specifications:

<b>Year:</b>	2006
<b>VIN:</b>	1N6AA07A86N564584
<b>Make:</b>	Nissan
<b>Stock:</b>	004466305
<b>Model/Trim:</b>	Titan XE
<b>Condition:</b>	Pre-Owned
<b>Body:</b>	Pickup Truck
<b>Exterior:</b>	Silver
<b>Engine:</b>	5.6L DOHC 32-valve V8 engine
<b>Interior:</b>	Gray Cloth
<b>Mileage:</b>	113,328
<b>Drivetrain:</b>	Rear Wheel Drive
<b>Economy:</b>	City 14 / Highway 18



**Our Location :**



2006 Nissan Titan XE

Lions Auto Sales - (916) 550-0670 - View this car on our website at [lionsautosales.net/6622782/ebrochure](http://lionsautosales.net/6622782/ebrochure)

## Installed Options

### Interior

- (2) auxiliary pwr outlets- (6) cupholders/(2) bottle holders
- AM/FM stereo w/CD player/(8) speakers- Air conditioning w/floor ducts
- Column-mounted shifter w/manual shift mode
- Cruise control w/steering wheel-mounted controls- Digital clock- Front center console
- Front cloth 40/20/40 split-bench seat
- Instrumentation-inc: speedometer, tachometer, LCD trip odometer, coolant temp gauge, oil pressure gauge, fuel gauge, volt meter
- Pwr door locks- Pwr windows- Rear cloth 60/40 split fold-up bench seat
- Rear window defroster- Retained accessory pwr w/battery saver- Tilt steering wheel
- Tire pressure monitoring system

### Exterior

- (4) full-size crew cab doors- Bed separator/shelf provision- Bedside/tailgate top moldings
- Black door handles- Body-color front bumper & grille- Cargo bed lamp
- Double wall cargo bed w/inner bed cargo hooks- Dual black pwr mirrors
- Easygate dampened tailgate assist- Pwr vertical sliding rear window
- Quick release removable tailgate w/lock- Rear privacy glass
- Variable intermittent windshield wipers

### Safety

- (2) auxiliary pwr outlets- (6) cupholders/(2) bottle holders
- AM/FM stereo w/CD player/(8) speakers- Air conditioning w/floor ducts
- Column-mounted shifter w/manual shift mode
- Cruise control w/steering wheel-mounted controls- Digital clock- Front center console
- Front cloth 40/20/40 split-bench seat
- Instrumentation-inc: speedometer, tachometer, LCD trip odometer, coolant temp gauge, oil pressure gauge, fuel gauge, volt meter
- Pwr door locks- Pwr windows- Rear cloth 60/40 split fold-up bench seat
- Rear window defroster- Retained accessory pwr w/battery saver- Tilt steering wheel
- Tire pressure monitoring system

### Mechanical

- 110-amp alternator- 17" x 7.5" steel wheels - 2.94 axle ratio- 28.0 gallon fuel tank (2005)
- 4-wheel anti-lock braking system (ABS) w/(4) sensors
- 5-speed automatic transmission w/tow/haul mode- 5.6L DOHC 32-valve V8 engine
- Front stabilizer bar- Fuel tank skid plate- Full size spare tire
- Independent double wishbone front suspension
- Multi-leaf rear suspension w/solid Dana axle- P245/75R17 all-season tires
- Pre-wiring for towing- Pwr front vented disc/rear disc brakes
- Pwr-assisted speed-sensitive rack-and-pinion steering- Rear wheel drive
- Welded ladder frame w/full-length box section rails

Lions Auto Sales

[lionsautosales.net](http://lionsautosales.net)

(916) 550-0670

2329 Fulton Ave

Sacramento, CA 95825

© 2019 AutoRevo - All rights reserved. - Powered by AutoRevo