



## 2014 Jeep Wrangler Unlimited Polar Edition

**Website Price \$24,995**

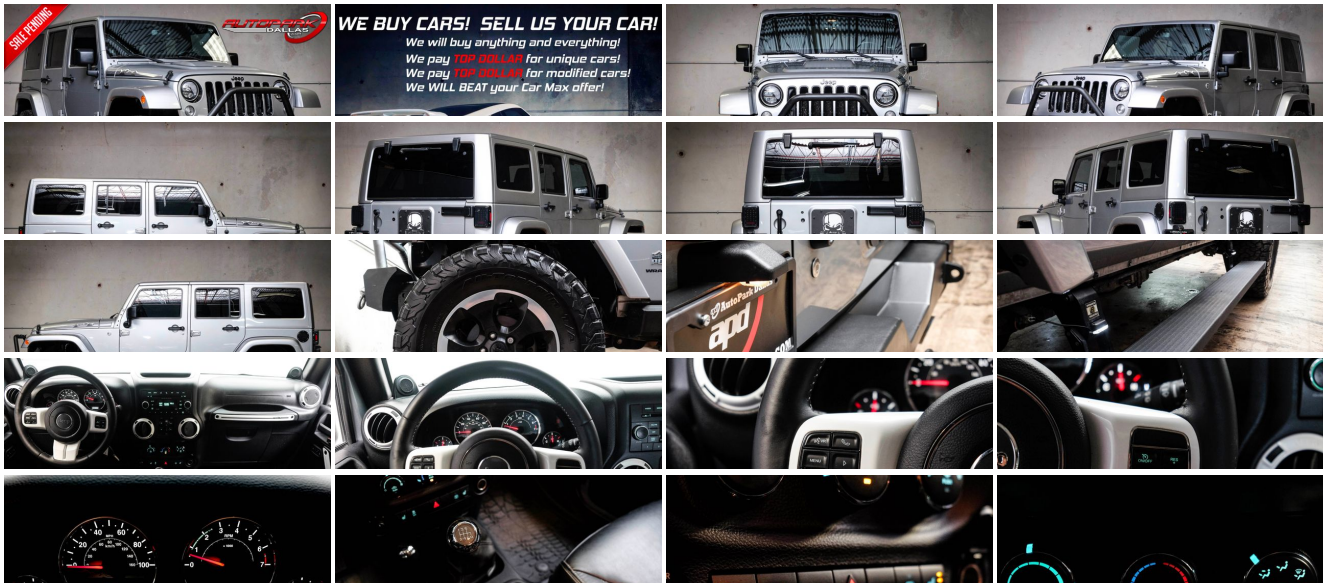
View this vehicle on our website at [autoparkdallas.com](http://autoparkdallas.com)



(214) 945-2601

2061 S Stemmons Fwy , Lewisville, TX 75067

- Photos
- Details
- Contact



## Specifications:

<b>Year:</b>	2014
<b>VIN:</b>	<a href="#">1C4BJWEG4EL200738</a>
<b>Make:</b>	Jeep
<b>Model/Trim:</b>	Wrangler Unlimited Polar Edition
<b>Condition:</b>	Pre-Owned
<b>Body:</b>	SUV
<b>Exterior:</b>	Billet Metallic Clearcoat
<b>Engine:</b>	ENGINE: 3.6L V6 24V VVT
<b>Interior:</b>	Black Leather
<b>Transmission:</b>	TRANSMISSION: 6-SPEED MANUAL (NSG370)
<b>Mileage:</b>	105,882
<b>Drivetrain:</b>	4 Wheel Drive
<b>Economy:</b>	City 16 / Highway 20

## Vehicle Description

AutoPark Dallas is excited to offer you this \*Polar Edition\* 2014 Jeep Wrangler Unlimited with Upgrades for sale! There isn't a better vehicle for that off-road adventure, the Jeep Wrangler, built tough and durable to handle every terrain thrown at it with no complaints. Not to forget on those warm beautiful days you have the ability to remove the hard top for even more freedom! As you can obviously see though, this Jeep Wrangler has been modified on top of it already being a special [Polar Edition](#) letting it ooze that unique personality even more! This Wrangler speaks and is ready to conquer the next mountain trip but for now this off-road journey sits in our indoor 16,000 Sq ft Showroom located in Addison, Tx. amongst our inventory of 60+ other unique and luxury vehicles!

---

### 2014 Jeep Wrangler Unlimited

\*POLAR EDITION!\*

\*1 OWNER!\*

\*2 Set of Keys!\*

### MODIFICATIONS!

Body Armor 4x4 Front Bumper

Razer Auto Extreme Skull LED Headlights

Alteon LED Tail Lights

Bestop PowerBoard Running Boards

JAMMER Cold-Air Intake Dry Filter CAI

### STOCK!

Billet Metallic Clearcoat Exterior

Black Removable 3-Piece Hard-Top

Black Leather Interior w/ Polar Edition Logo

\*Connectivity Group!\*

Hands Free Bluetooth

Heated Front Row Seats

Single-Zone Air Conditioning

Powered Windows

CD & AUX Capable  
INFINITY Sound System  
Anti-Theft Alarm System  
Steering Wheel Mounted Controls  
Cruise Control  
3.6L V6 24V VVT Engine  
6-Speed Manual Transmission  
4 Wheel Drive  
Professionally Detailed!  
Well Maintained!  
AND SO MUCH MORE!!!

## Financing is available!

Get pre-approved in no time by filling out a credit application on the finance section of our website!

We also offer different extended warranty options!

**\*\*All vehicles are priced for QUICK SALE. All REASONABLE offers will be considered\*\***

AutoPark Dallas is dedicated to offering a level of customer service not usually found in the automobile industry. We take pride in continuing this service long after the vehicle has been delivered. We strive for excellence and make every effort to see that our customer is completely satisfied with every purchase. Referrals and Testimonials is what our business is built on.

Our extensive buying experience guarantees quality, pre-owned and new vehicles hand-picked from factory sources. Our love for the automobile and our dislike of traditional dealership tactics motivate us to provide the service we do!

Pre-purchase inspections are always welcomed! We also offer airport shuttles, amazing finance options, extended warranties and so much more!

We accept trade-ins, will BUY your car (modified or not) even if you don't buy one from us, and offer consignment deals to SELL your vehicle for you! For more information just give us a CALL or TEXT!!

# #214-945-2601

## Call or Text **Anytime!**

## Se habla Español

# WWW.AUTOPARKDALLAS.COM

### Installed Options

#### Interior

- Cloth Bucket Front Seats w/Cloth Back Material - 2 12V DC Power Outlets
- 2 12V DC Power Outlets and 1 AC Power Outlet - 2 Seatback Storage Pockets
- 4-Way Passenger Seat -inc: Manual Recline and Fore/Aft Movement
- 6-Way Driver Seat -inc: Manual Recline, Height Adjustment and Fore/Aft Movement
- 60-40 Folding Split-Bench Front Facing Fold Forward Seatback Cloth Rear Seat
- Analog Display- Carpet Floor Trim, Carpet And Rubber Mat- Compass
- Cruise Control w/Steering Wheel Controls- Day-Night Auto-Dimming Rearview Mirror

### Option Packages

#### Factory Installed Packages

ENGINE: 3.6L V6 24V VVT

TRANSMISSION: 6-SPEED MANUAL (NSG370)

50 STATE EMISSIONS

- Delayed Accessory Power- Driver And Passenger Visor Vanity Mirrors
- Fade-To-Off Interior Lighting- Front Center Armrest w/Storage- Front Cupholder
- Front Map Lights- Full Carpet Floor Covering
- Full Floor Console w/Locking Storage, 2 12V DC Power Outlets and 1 AC Power Outlet
- Gauges -inc: Speedometer, Odometer, Engine Coolant Temp, Tachometer, Trip Odometer and Trip Computer
- Heated Front Seats
- Instrument Panel Bin, Dashboard Storage, Driver And Passenger Door Bins
- Interior Trim -inc: Deluxe Sound Insulation- Leather Steering Wheel- Locking Glove Box
- MOPAR Slush Mats
- Manual Adjustable Front Head Restraints and Fixed Rear Head Restraints
- Manual Air Conditioning- Manual Tilt Steering Column- Outside Temp Gauge
- Perimeter Alarm- Power 1st Row Windows w/Driver And Passenger 1-Touch Down
- Power Door Locks w/Autolock Feature- Power Rear Windows- Rear Cupholder
- Remote Keyless Entry w/Integrated Key Transmitter, Illuminated Entry and Panic Button
- Sentry Key Engine Immobilizer - Trip Computer

## Exterior

- Sunrider Soft Top- Aluminum Spare Wheel- Black Door Handles
- Black Power Heated Side Mirrors w/Manual Folding- Black Side Windows Trim
- Body-Colored Fender Flares- Clearcoat Paint- Conventional Rear Cargo Access
- Convertible w/Fixed Roll-Over Protection- Deep Tinted Glass
- Front Bumper w/2 Tow Hooks- Front Fog Lamps
- Full-Size Spare Tire Mounted Outside Rear
- Fully Automatic Aero-Composite Halogen Headlamps- Fully Galvanized Steel Panels
- Rear Bumper w/1 Tow Hook- Side Steps
- Tailgate/Rear Door Lock Included w/Power Door Locks
- Tires: P255/70R18 OWL On/Off Road- Variable Intermittent Wipers

## Safety

- Cloth Bucket Front Seats w/Cloth Back Material - 2 12V DC Power Outlets
- 2 12V DC Power Outlets and 1 AC Power Outlet - 2 Seatback Storage Pockets
- 4-Way Passenger Seat -inc: Manual Recline and Fore/Aft Movement
- 6-Way Driver Seat -inc: Manual Recline, Height Adjustment and Fore/Aft Movement
- 60-40 Folding Split-Bench Front Facing Fold Forward Seatback Cloth Rear Seat
- Analog Display- Carpet Floor Trim, Carpet And Rubber Mat- Compass
- Cruise Control w/Steering Wheel Controls- Day-Night Auto-Dimming Rearview Mirror
- Delayed Accessory Power- Driver And Passenger Visor Vanity Mirrors
- Fade-To-Off Interior Lighting- Front Center Armrest w/Storage- Front Cupholder
- Front Map Lights- Full Carpet Floor Covering
- Full Floor Console w/Locking Storage, 2 12V DC Power Outlets and 1 AC Power Outlet
- Gauges -inc: Speedometer, Odometer, Engine Coolant Temp, Tachometer, Trip Odometer and Trip Computer
- Heated Front Seats
- Instrument Panel Bin, Dashboard Storage, Driver And Passenger Door Bins
- Interior Trim -inc: Deluxe Sound Insulation- Leather Steering Wheel- Locking Glove Box
- MOPAR Slush Mats
- Manual Adjustable Front Head Restraints and Fixed Rear Head Restraints
- Manual Air Conditioning- Manual Tilt Steering Column- Outside Temp Gauge
- Perimeter Alarm- Power 1st Row Windows w/Driver And Passenger 1-Touch Down
- Power Door Locks w/Autolock Feature- Power Rear Windows- Rear Cupholder
- Remote Keyless Entry w/Integrated Key Transmitter, Illuminated Entry and Panic Button
- Sentry Key Engine Immobilizer - Trip Computer

## Mechanical

- 160 Amp Alternator- 22.5 Gal. Fuel Tank- 3.21 Rear Axle Ratio
- 4-Wheel Disc Brakes w/4-Wheel ABS, Front And Rear Vented Discs, Brake Assist and Hill Hold Control
- 600CCA Maintenance-Free Battery- 880# Maximum Payload
- Anti-Spin Differential Rear Axle- Auto Locking Hubs- Engine Oil Cooler
- Engine: 3.6L V6 24V VVT- Front And Rear Anti-Roll Bars- GVWR: 5,500 lbs
- HD Shock Absorbers- Heavy Duty Suspension w/Gas Shocks
- Hydraulic Power-Assist Steering- Leading Link Front Suspension w/Coil Springs
- Manual Transfer Case- Part-Time Four-Wheel Drive- Single Stainless Steel Exhaust
- Towing Equipment -inc: Trailer Sway Control
- Trailing Arm Rear Suspension w/Coil Springs
- Transmission: 6-Speed Manual (NSG370) (DISC)

---

**AIR CONDITIONING W/AUTO TEMP CONTROL**  
-inc: Air Filtering **\$395**

---

**BLACK 3-PIECE HARD TOP**  
-inc: If ordering without AEM (Dual Top Group), the black soft top will not be included, Rear Window Defroster, Delete Sunrider Soft Top, Freedom Panel Storage Bag, Rear Window Wiper/Washer **\$995**

---

**CONNECTIVITY GROUP**  
-inc: Vehicle Information Center, Tire Pressure Monitoring Display **\$495**

---

**3.73 REAR AXLE RATIO**  
**\$495**

---

**QUICK ORDER PACKAGE 23P POLAR EDITION**  
-inc: Engine: 3.6L V6 24V VVT, Transmission: 6-Speed Manual (NSG370), Polar Edition Badging, Polar Edition Interior Accents, Chrome/Leather Wrapped Shift Knob, Body Color Grille w/Black Accent, Black/Chrome Screws Fuel Filler Door, Rock Rails, Black Rear Bumper, Polar Package, Hood Power Bulge, Black Fuel Filler Door, Black Front Bumper, Rear Window Defroster, Delete Sunrider Soft Top, Freedom Panel Storage Bag, Rear Window Wiper/Washer, Vehicle Information Center, Tire Pressure Monitoring Display **\$4,400**

---

**STANDARD PAINT**

---

**BILLET METALLIC CLEARCOAT**

---

**BLACK, POLAR LEATHER SEATS W/PEARL ACCENT**

---

**Option Packages Total**  
**\$6,780**

# AUTOPARK

## Dallas

Auto Park Dallas

View this car on our website at [autoparkdallas.com/6618821](http://autoparkdallas.com/6618821)

Website: [autoparkdallas.com](http://autoparkdallas.com)

Phone: (214) 945-2601

Map: 2061 S Stemmons Fwy, Lewisville, TX 75067

