

2012 Dodge Ram 3500 Laramie 4X4 LIFTED,ROOF,NAV,HTD LTH,BED CAP,96K

View this car on our website at tveauto.com/6614660/ebrochure



Our Price **\$36,900**

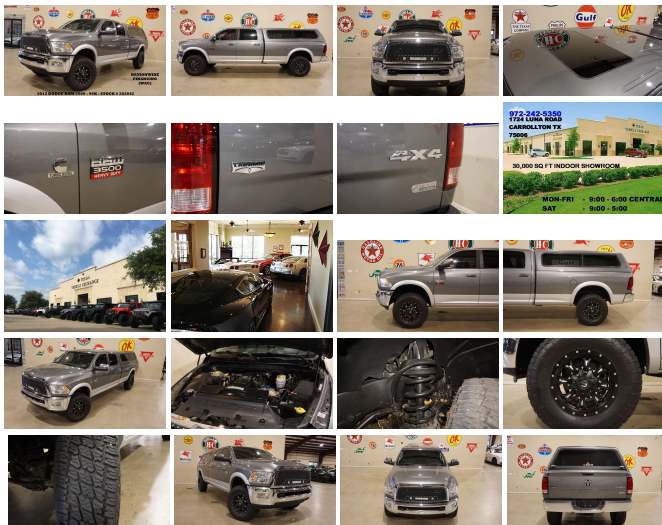
Specifications:

Year:	2012
VIN:	3C63D3JL3CG202642
Make:	Dodge
Stock:	202642
Model/Trim:	Ram 3500 Laramie 4X4 LIFTED,ROOF,NAV,HTD LTH,BED CAP,96K
Condition:	Pre-Owned
Body:	Pickup Truck
Exterior:	Mineral Gray Metallic
Engine:	6.7L I6 CUMMINS TURBO-DIESEL ENGINE
Interior:	Dark Slate Interior Leather
Transmission:	6-SPEED AUTOMATIC TRANSMISSION W/OD
Mileage:	96,497
Drivetrain:	4 Wheel Drive

NATION WIDE FINANCING

SUBMIT CREDIT APP WWW.TVEAUTO.COM

OR CALL 972-242-5350



2012 DODGE RAM 3500 CREW CAB
LARAMIE LONG BED 4X4, 6.7L CUMMINS
TURBO DIESEL ENGINE, AUTOMATIC
TRANSMISSION, ONLY 96K, MINERAL GRAY
METALLIC W/DARK SLATE LEATHER
INTERIOR, CARFAX REPORTS 2 OWNERS
NO ACCIDENTS, APPEAR TO BE A NON-
SMOKER, FOGLIGHTS, APPROX 3IN LEVEL
KIT, SUNROOF, NAVIGATION, BACK-UP
CAMERA, POWER WINDOWS, POWER
DOOR LOCKS, FOLD OUT HEATED

MIRRORS WITH TURN SIGNALS, TILT & HEATED STEERING WHEEL WITH AUDIO & CRUISE CONTROLS, DUAL POWER & HEATED FRONT SEATS WITH DRIVER 2 MEMORY POSITION, TRACTION CONTROL, TOW/HAUL BUTTON, TRAILER BRAKE CONTROLLER, ICE COLD A/C, DUAL CLIMATE CONTROL, ALPINE AM/FM/SIRIUS STEREO WITH CD PLAYER, U-CONNECT, SELF DIMMING REAR VIEW MIRROR, HOMELINK GARAGE CONTROLS, DUAL LIGHTED VANITY MIRRORS, REAR A/C VENTS, POWER SLIDING REAR WINDOW, LEER BED CAP, BED LINER, TOW PACKAGE WITH RECEIVER HITCH, RUBBER FLOOR MATS, OWNER'S MANUAL, 1 KEY/1 REMOTE. 18 IN FUEL KRANK WHEELS, FRONT TIRES ARE NITTO TERRA GRAPPLER G2 35X12.50R/18 WITH APPROX 95% TREAD LIFE REMAINING, REAR TIRES ARE NITTO TERRA GRAPPLER G2 35X12.50R/18 WITH APPROX 75% TREAD LIFE REMAINING. RUNS AND DRIVES GREAT. GIVE US A CALL @ 972-242-5350 OR STOP BY FOR A TEST DRIVE. 1724 LUNA RD IN CARROLLTON - 2 MILES NORTH OF 635. CLICK ON CARFAX ICON TO VIEW A FULL REPORT AT NO COST TO YOU.

2012 Dodge Ram 3500 Laramie 4X4 LIFTED,ROOF,NAV,HTD LTH,BED CAP,96K

Texas Vehicle Exchange - 972-242-5350 - View this car on our website at veauto.com/6614660/ebrochure

Vehicle History Report : as Of 04/21/2019



Snapshot

2012 RAM 3500 LARAMIE

	No accidents reported to CARFAX
	No damage reported to CARFAX
	2 Previous owners
	At least 1 open recall
	8 Service history records
	96,464 Last reported odometer reading

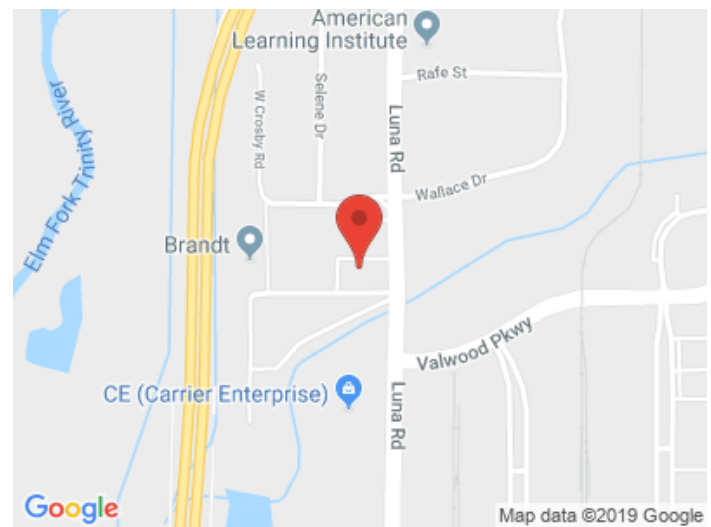


FREE CARFAX Report

See the full CARFAX Report for additional information

*carfax Snapshot is a reflection of available information on the date the report was pulled. carfax is constantly being updated with new information and is subject to change at any time.

Our Location :



2012 Dodge Ram 3500 Laramie 4X4 LIFTED,ROOF,NAV,HTD LTH,BED CAP,96K

Texas Vehicle Exchange - 972-242-5350 - View this car on our website at veauto.com/6614660/ebrochure

Installed Options

Interior

- 10-way pwr driver/6-way pwr front passenger seats -inc: driver seat memory
- 115V auxiliary pwr outlet- 120-MPH primary speedometer- 12V auxiliary pwr outlet
- 2nd row in-floor storage bins- Auto air conditioning w/dual-zone temp control
- Auto-dimming rearview mirror- Carpeted floor covering- Chrome accent shift knob
- Deluxe door trim panel- Driver/passenger assist handles
- Dual illuminated visor vanity mirrors- Dual pwr lumbar adjusters
- Front center seat cushion storage- Front/rear floor mats- Glove box lamp
- Heated front seats- Heated steering wheel- Instrument cluster w/display screen
- LED interior lighting- Leather-trimmed 40/20/40 split-bench seat
- Leather-wrapped steering wheel- Memory feature for stereo, driver seat & exterior mirrors
- Mini floor console- Outside temp gauge & compass
- Overhead console w/universal garage door opener - Pwr accessory delay- Pwr locks
- Pwr windows w/front one-touch up/down- Rear 60/40 split-folding bench seat
- Rear dome lamp w/on/off switch- Rear underseat compartment storage
- Remote keyless entry- Security alarm- Sentry Key theft-deterrent system- Speed control
- Steering wheel audio controls- Tilt steering column- Traveler/mini trip computer
- Vehicle info center- Woodgrain instrument panel bezel

Exterior

- 17" steel spare wheel
- 17" x 6.0" aluminum wheels (N/A w/AR9 Single Rear Wheel Group)
- Accent-color fender flares- Auto headlamps- Body-color headlamp filler panel
- Body-color/chrome door handles- Box & rear fender lamps- Bright front bumper
- Bright rear bumper- Bright/bright grille- Cab clearance lamps- Cargo lamp
- Center wheel hubs
- Chrome pwr trailer tow mirrors w/memory -inc: supplemental signals, courtesy lamps, heated glass

- Dual rear wheels- Fog lamps- Front air dam- Front license plate bracket
- Full-size spare tire
- LT235/80R17E all-season BSW tires (N/A w/AR9 Single Rear Wheel Group)
- Locking tailgate- Pwr sliding rear window- Quad headlamps- Tinted glass windows
- Underhood lamp- Variable-speed intermittent windshield wipers
- Winch-type spare tire carrier

Safety

- 10-way pwr driver/6-way pwr front passenger seats -inc: driver seat memory
- 115V auxiliary pwr outlet- 120-MPH primary speedometer- 12V auxiliary pwr outlet
- 2nd row in-floor storage bins- Auto air conditioning w/dual-zone temp control
- Auto-dimming rearview mirror- Carpeted floor covering- Chrome accent shift knob
- Deluxe door trim panel- Driver/passenger assist handles
- Dual illuminated visor vanity mirrors- Dual pwr lumbar adjusters
- Front center seat cushion storage- Front/rear floor mats- Glove box lamp
- Heated front seats- Heated steering wheel- Instrument cluster w/display screen
- LED interior lighting- Leather-trimmed 40/20/40 split-bench seat
- Leather-wrapped steering wheel- Memory feature for stereo, driver seat & exterior mirrors
- Mini floor console- Outside temp gauge & compass
- Overhead console w/universal garage door opener- Pwr accessory delay- Pwr locks
- Pwr windows w/front one-touch up/down- Rear 60/40 split-folding bench seat
- Rear dome lamp w/on/off switch- Rear underseat compartment storage
- Remote keyless entry- Security alarm- Sentry Key theft-deterrent system- Speed control
- Steering wheel audio controls- Tilt steering column- Traveler/mini trip computer
- Vehicle info center- Woodgrain instrument panel bezel

Mechanical

- 11.5" dual rear wheel axle ring gear diameter- 12200# GVWR- 160-amp alternator
- 3.42 rear axle ratio- 6-speed manual transmission w/OD
- 6.7L I6 Cummins turbo-diesel engine- 7-pin trailer wiring harness
- 730-amp maintenance-free battery- 8' pickup box- Anti-spin rear axle differential
- Class IV receiver hitch- Diesel exhaust brake- Electronic shift-on-the-fly transfer case
- Electronically-controlled throttle- Four wheel drive- Front stabilizer bar
- HD engine cooling- HD front shock absorbers- HD rear shock absorbers
- Pwr 4-wheel anti-lock disc brakes- Pwr steering- Tow hooks- Trailer brake control
- Trailer tow wiring -inc: 4-pin connector

Option Packages

Factory Installed Packages

6.7L I6 CUMMINS TURBO-DIESEL ENGINE

6-SPEED AUTOMATIC TRANSMISSION W/OD

\$500

PWR SUNROOF

\$995

SINGLE REAR WHEEL GROUP

-inc: 17" x 8.0" aluminum wheels, 10,100# GVWR, LT265/70R17E all-season OWL tires, electronic stability control

-\$995

MINERAL GRAY METALLIC

UCONNECT 430N

-inc: AM/FM stereo w/CD/DVD/MP3 player, 40GB hard disk drive w/28GB available, 6.5" touch screen

\$400

display, audio jack input for
mobile devices, Garmin
navigation system, SIRIUS
satellite Travel Link, Uconnect
voice command w/Bluetooth

-
DARK SLATE INTERIOR, LEATHER-
TRIMMED 40/20/40 SPLIT-BENCH
SEAT

-
Option Packages Total
\$900

Texas Vehicle Exchange

tveauto.com

972-242-5350

1724 Luna Road

Carrollton, TX 75006

© 2019 AutoRevo - All rights reserved. - Powered by AutoRevo