

2011 Ford Super Duty F-350 SRW Pickup XLT

View this car on our website at randyadamsinc.com/6614155/ebrochure



Our Price **\$27,900**

Specifications:

Year:	2011
VIN:	1FT8W3BT2BEC15475
Make:	Ford
Stock:	C15475
Model/Trim:	Super Duty F-350 SRW Pickup XLT
Condition:	Pre-Owned
Body:	Pickup Truck
Exterior:	Oxford White
Engine:	6.7L 32-VALVE POWER STROKE V8 DIESEL ENGINE
Interior:	Steel Cloth
Mileage:	65,816
Drivetrain:	4 Wheel Drive

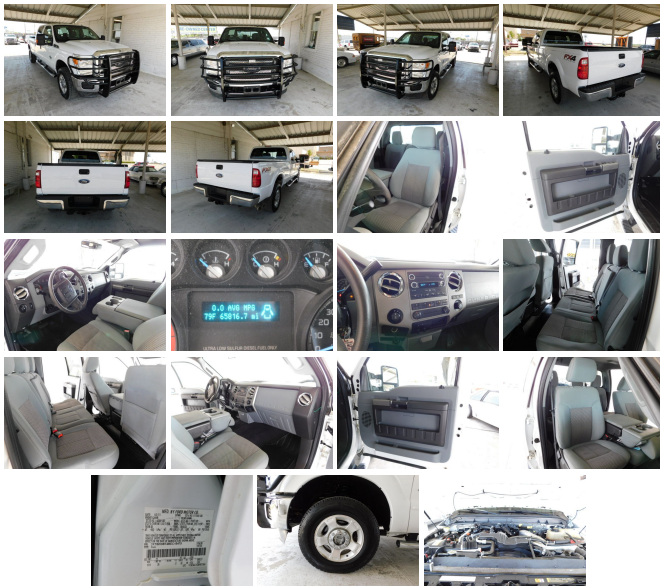
Thank you for looking at another one of Randy Adams Inc.'s on-line listings!

Please find out more about this vehicle below:

2011 FORD F350 XLT 4X4

- 6.7L V8 POWER STROKE DIESEL ENGINE
- AUTOMATIC/AC
- TILT WHEEL/CRUISE CONTROL
- AM/FM STEREO W/CD
- POWER WINDOWS, LOCKS, MIRRORS
- BED LINER
- TRAILER/BRAKE PACKAGE
- AND MORE

Randy Adams Inc. offers only the very best used cars, trucks, and SUVs in the New Braunfels area. Give us a call at 830-625-7159, email sales@randyadamsinc.com, or stop by and visit us at 1687 Business Loop 35 S, New



Braunfels, TX 78130.

Prices do not include Tax, Title, License, Inspection and Documentation Fee.

It is the customer's sole responsibility to verify the existence and condition of any equipment listed. Neither the dealership nor AutoRevo is responsible for misprints on prices or equipment. It is the customer's sole responsibility to verify the accuracy of the prices with the dealer. Pricing subject to change without notice.

2011 Ford Super Duty F-350 SRW Pickup XLT

Randy Adams Inc. - (830) 625-7159 - View this car on our website at randyadamsinc.com/6614155/ebrochure

Our Location :



2011 Ford Super Duty F-350 SRW Pickup XLT

Randy Adams Inc. - (830) 625-7159 - View this car on our website at randyadamsinc.com/6614155/ebrochure

Installed Options

Interior

- (2) aux pwr outlets in instrument panel - (4) air registers w/positive shut-off
- 3-blink lane change signal
- 60/40 flip-up/fold-down rear split bench seat -inc: dual cupholders in armrest, underseat partitioned lockable storage w/aux pwr outlet, (3) head restraints
- Accessory delay- Air conditioning w/chrome ringed black vents
- Cloth 40/20/40 split bench front seat -inc: center armrest, cupholder, storage, center underseat storage w/aux pwr outlet
- Color-keyed carpet full-floor covering- Color-keyed cloth headliner
- Color-keyed door trim panel -inc: color-keyed soft armrest, pwr switch bezel, molded upper applique, upper & lower map pockets, grab handle & reflector
- Color-keyed scuff plates- Cruise control- Dash-top tray
- Driver & front passenger grab handles- Driver manual lumbar support

- Dual color-keyed coat hooks- Dual color-keyed vinyl sunvisors-inc: covered mirrors
- Front door operated dome lamp w/time delay off & IP switch
- Front passenger-side roof ride handle- Front/rear color-keyed carpeted floor mats
- Front/rear map lamps- Glove box
- Instrument panel mounted storage bin & trash bag hook
- Multifunction switch message center -inc: ice blue lighting, 3-button message control on steering wheel
- Oil minder system
- Overhead console -inc: storage bins for garage door opener & sunglasses
- Pwr door locks w/backlit switches
- Pwr windows w/driver one-touch-down & backlit switches- Rear armrests w/cupholders
- Rear seating roof ride handles- Remote keyless entry & perimeter anti-theft alarm
- SecurILock anti-theft ignition- Tilt/telescoping steering column

Exterior

- (5) LT245/75R17E all-season BSW tires
- 17" 5-spoke cast aluminum wheels -inc: bright center ornaments - Black door handles
- Box-rail & tailgate top-edge moldings- Chrome front bumper w/grained top cover
- Chrome rear bumper- Dual beam jewel-effect headlamps- Front fender vents
- Front/rear license plate brackets- Full-size spare tire w/lock & carrier
- Grille w/medium platinum insert & chrome surround - Interval windshield wipers
- Manually telescoping pwr heated trailer tow mirrors -inc: turn signals, integrated clearance lights, heated convex spotter mirror
- Pickup box/cargo lights- Rear privacy glass
- Removable locking tailgate w/black handle & TailGate Assist - Solar tinted glass
- Underhood service light

Safety

- (2) aux pwr outlets in instrument panel - (4) air registers w/positive shut-off
- 3-blink lane change signal
- 60/40 flip-up/fold-down rear split bench seat -inc: dual cupholders in armrest, underseat partitioned lockable storage w/aux pwr outlet, (3) head restraints
- Accessory delay- Air conditioning w/chrome ringed black vents
- Cloth 40/20/40 split bench front seat -inc: center armrest, cupholder, storage, center underseat storage w/aux pwr outlet
- Color-keyed carpet full-floor covering- Color-keyed cloth headliner
- Color-keyed door trim panel -inc: color-keyed soft armrest, pwr switch bezel, molded upper applique, upper & lower map pockets, grab handle & reflector
- Color-keyed scuff plates- Cruise control- Dash-top tray
- Driver & front passenger grab handles- Driver manual lumbar support
- Dual color-keyed coat hooks- Dual color-keyed vinyl sunvisors-inc: covered mirrors
- Front door operated dome lamp w/time delay off & IP switch
- Front passenger-side roof ride handle- Front/rear color-keyed carpeted floor mats
- Front/rear map lamps- Glove box
- Instrument panel mounted storage bin & trash bag hook
- Multifunction switch message center -inc: ice blue lighting, 3-button message control on steering wheel
- Oil minder system
- Overhead console -inc: storage bins for garage door opener & sunglasses
- Pwr door locks w/backlit switches
- Pwr windows w/driver one-touch-down & backlit switches- Rear armrests w/cupholders
- Rear seating roof ride handles- Remote keyless entry & perimeter anti-theft alarm
- SecurILock anti-theft ignition- Tilt/telescoping steering column

Mechanical

- (2) front tow hooks- 12.5K trailer hitch receiver -inc: 2" hitch - 157-amp HD alternator
- 2-ton mechanical jack- 3.73 axle ratio (REQ: 996 Engine) - 4-wheel drive
- 6.2L SOHC 16-valve EFI NA V8 flex-fuel engine -inc: engine idle meter
- 72 amp/hr (650 CCA) battery
- 8' pickup box -inc: (6) tie-down hooks, partitionable & stackable storage
- Front stabilizer bar- HD gas shock absorbers- Manual transfer case & hubs
- Mono-beam front axle w/coil spring suspension- Pwr 4-wheel disc brakes w/vacuum boost
- Pwr steering w/steering damper- Stationary elevated engine idle control (SEIC)
- TorqShift 6-speed automatic transmission w/tow/haul mode (REQ: 996 Engine)
- Trailer brake controller *Compatible w/select electric over hydraulic brakes* **w/66D Pickup Box Delete, 7 & 4 way combo trailer tow socket & bracket deleted*
- Trailer tow pkg -inc: 7-wire harness w/relays, 7/4 pin combination connector

Option Packages

Factory Installed Packages

6.7L 32-VALVE POWER STROKE V8 DIESEL ENGINE

-inc: diesel emission fluid system, engine exhaust braking in tow/haul mode, 750 CCA 78-AH dual batteries, intelligent oil life minder, 14K trailer hitch receiver w/2.5" trailer hitch & 2" reducer sleeve

\$7,835

Option Packages Total
\$7,835

Purchase prices do not include taxes, title, license, inspection or doc fee. It is the customer's sole responsibility to verify the accuracy of the price and existence and condition of any equipment listed. Dealer is not responsible for any typographical, technical or misprint errors on prices or equipment. This site and all information and materials appearing on it, are presented to the user "as is" without warranty of any kind, either express or implied. Mileage posted may vary slightly due to local test driving, in-transit repairs or road testing. Pricing subject to change without notice. All vehicles are subject to prior sale.



randyadamsinc.com

(830) 625-7159

1687 Business Loop 35 S

New Braunfels, TX 78130

© 2019 AutoRevo - All rights reserved. - Powered by AutoRevo