



## 2011 Chevrolet Equinox LTZ

**NO HAGGLE CASH PRICE! \$8,791**

**Average Retail Price \$13,000**

View this vehicle on our website at [sterlingmotorsport.com](http://sterlingmotorsport.com)

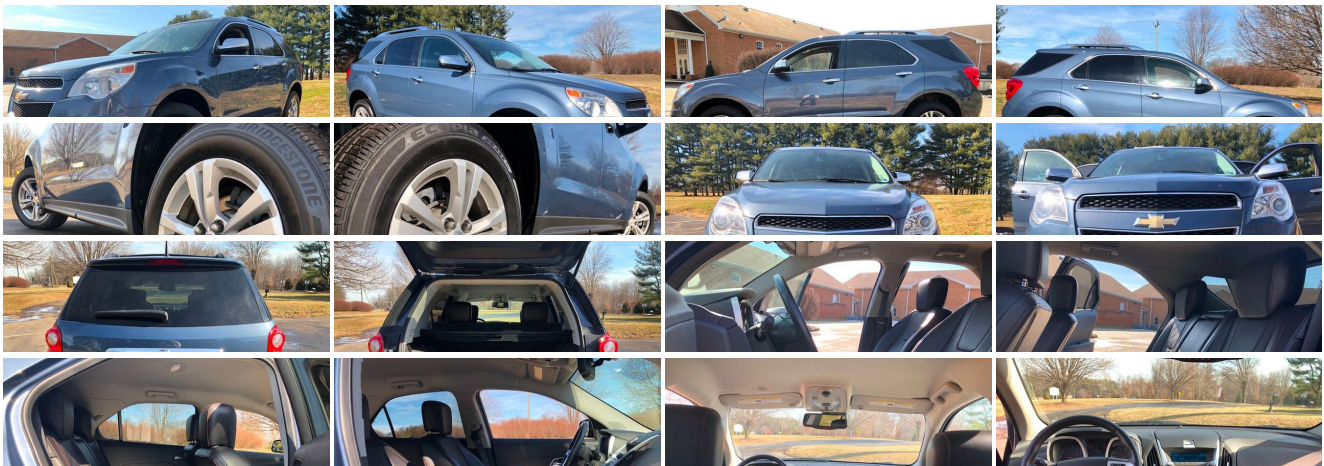
[571-313-1989](tel:571-313-1989)

9 Douglas Court Unit 101 , Sterling, VA 20166

Photos

Details

Contact





Specifications:

Year:	2011
VIN:	2CNFLGEC1B6247031
Make:	Chevrolet
Stock:	247031
Model/Trim:	Equinox LTZ
Condition:	Pre-Owned
Body:	SUV
Exterior:	BLUE
Engine:	ENGINE, 2.4L DOHC, 4-CYLINDER SIDI (SPARK IGNITION DIRECT INJECTION)
Interior:	Black Leather
Mileage:	103,333
Drivetrain:	All Wheel Drive
Economy:	City 20 / Highway 29

Vehicle Description

Installed Options

Interior

- Seats, Deluxe front bucket - Perforated leather-appointed seating
- Floor mats, carpeted first and second row
- Driver Information Center monitors 26 various systems including, Vehicle Information Menu (oil life, tire pressure, standard/metric units), Trip Information Menu (trip 1, trip 2, fuel range, average fuel economy, instant fuel economy, average vehicle speed) and compass display
- Door locks, power programmable with power lockout protection
- Remote Keyless Entry with 2 transmitters, panic button, content theft alarm activation verification and illuminated entry
- Theft-deterrent system, anti-theft alarm and engine immobilizer.
- Mirror, inside rearview self-dimming- Cargo cover, rear security cover
- Rearview camera system, display integrated into self-dimming rearview mirror (Rearview camera display only included in navigation radio screen when (PCJ) Audio system with Navigation/Infotainment or (PDB) Audio system with Navigation/Infotainment and Rear Entertainment is ordered.)
- Seats, heated driver and front passenger
- Seat adjuster front, driver 8-way power with power lumbar
- Seat, rear, 2-way fore/aft adjustment with 60/40 split seatback and 3-way recline
- Memory settings for the driver seat and exterior mirrors
- Console, center with armrest and concealed storage
- Armrest, rear center with dual cup holders - Steering wheel, leather-wrapped
- Steering wheel controls, mounted audio controls- Steering column, tilt and telescopic
- Instrumentation includes speedometer, single trip odometer, fuel level, engine temperature and tachometer
- Compass display included in Driver Information Center (DIC) (Not available with (UE0) OnStar delete.)
- Windows, power with Express-Down on all 4 doors- Remote vehicle starter system
- Cruise control, electronic with set and resume speed
- Air conditioning, automatic climate control- Defogger, rear-window electric
- Cupholders, 2 front in center console and 2 rear in center armrest with 1 bottle holder in each door
- Power outlets, 4 auxiliary with covers, 12-volt includes 1 front of console, 1 in console, 1 in back of console and 1 in cargo area.
- Visors, driver and front passenger illuminated vanity mirrors
- Assist handles, front passenger and rear outboards
- Map pocket, front seatback, driver and front passenger
- Lighting, interior with theatre dimming, center-mounted dome, rear cargo area, dual front map lights, ambient lighting on center stack surround, and center console cupholders (Includes ambient lighting on instrument panel center console door handle recess door

Option Packages

Factory Installed Packages

ENGINE, 2.4L DOHC, 4-CYLINDER SIDI (SPARK IGNITION DIRECT INJECTION)  
with VVT (Variable Valve Timing) (182 hp [135.7 kW] @ 6700 rpm, 172 lb-ft [232.2 N-m] @ 4900 rpm)

- (Includes ambient lighting on instrument panel, center console, door handle recess, door storage and footwell.)
- Cargo net, full-across rear

## Exterior

- Wheels, 17" (43.2 cm) aluminum (Not available with (LFW) 3.0L DOHC V6 SIDI engine.)
- Tires, P225/65R17 all-season, blackwall (Included and only available with (PFF) 17" (43.2 cm) painted aluminum wheels.)
- LTZ Exterior Appearance includes body-color bumpers with bright lowers, Charcoal luggage rails with bright chrome insert, bright chrome door handles, chrome outside mirrors and 17" aluminum wheels
- Luggage rack center rails
- Mirrors, outside heated power-adjustable, chrome, manual folding
- Tire, compact spare with steel wheel
- Luggage rack side rails, roof-mounted, Charcoal (Charcoal with bright chrome insert.)
- Bumpers, front and rear, body-color with bright front and rear lowers
- Moldings, Charcoal lower rocker- Grille, Charcoal with chrome surround
- Headlamps, halogen, uplevel projector style with automatic exterior lamp control
- Fog lamps, front halogen
- Glass, deep-tinted (all windows except light-tinted glass on windshield and driver- and front passenger-side glass)
- Wipers, front variable-speed, intermittent with washer.
- Wiper, rear variable-speed, intermittent with washer
- Liftgate, power programmable rear with fixed glass - Door handles, bright chrome

## Safety

- Seats, Deluxe front bucket - Perforated leather-appointed seating
- Floor mats, carpeted first and second row
- Driver Information Center monitors 26 various systems including, Vehicle Information Menu (oil life, tire pressure, standard/metric units), Trip Information Menu (trip 1, trip 2, fuel range, average fuel economy, instant fuel economy, average vehicle speed) and compass display
- Door locks, power programmable with power lockout protection
- Remote Keyless Entry with 2 transmitters, panic button, content theft alarm activation verification and illuminated entry
- Theft-deterrent system, anti-theft alarm and engine immobilizer.
- Mirror, inside rearview self-dimming- Cargo cover, rear security cover
- Rearview camera system, display integrated into self-dimming rearview mirror (Rearview camera display only included in navigation radio screen when (PCJ) Audio system with Navigation/Infotainment or (PDB) Audio system with Navigation/Infotainment and Rear Entertainment is ordered.)
- Seats, heated driver and front passenger
- Seat adjuster front, driver 8-way power with power lumbar
- Seat, rear, 2-way fore/aft adjustment with 60/40 split seatback and 3-way recline
- Memory settings for the driver seat and exterior mirrors
- Console, center with armrest and concealed storage
- Armrest, rear center with dual cup holders - Steering wheel, leather-wrapped
- Steering wheel controls, mounted audio controls- Steering column, tilt and telescopic
- Instrumentation includes speedometer, single trip odometer, fuel level, engine temperature and tachometer
- Compass display included in Driver Information Center (DIC) (Not available with (UE0) OnStar delete.)
- Windows, power with Express-Down on all 4 doors- Remote vehicle starter system
- Cruise control, electronic with set and resume speed
- Air conditioning, automatic climate control- Defogger, rear-window electric
- Cupholders, 2 front in center console and 2 rear in center armrest with 1 bottle holder in each door
- Power outlets, 4 auxiliary with covers, 12-volt includes 1 front of console, 1 in console, 1 in back of console and 1 in cargo area.
- Visors, driver and front passenger illuminated vanity mirrors
- Assist handles, front passenger and rear outboards
- Map pocket, front seatback, driver and front passenger
- Lighting, interior with theatre dimming, center-mounted dome, rear cargo area, dual front map lights, ambient lighting on center stack surround, and center console cupholders (Includes ambient lighting on instrument panel, center console, door handle recess, door storage and footwell.)
- Cargo net, full-across rear

## Mechanical

- Transmission, 6-speed automatic with overdrive
- Steering, power-assist, electric-variable
- Engine, 2.4L DOHC, 4-cylinder SIDI (Spark Ignition Direct Injection) with VVT (Variable Valve Timing) (182 hp [135.7 kW] @ 6700 rpm, 172 lb-ft [232.2 N-m] @ 4900 rpm)
- Alternator, 120 amps
- Axle, 3.53 final drive ratio (Requires all-wheel drive vehicles and (LAF) 2.4L DOHC 4-

- cylinder SIDI engine.)
- Battery, maintenance free with rundown protection, 525 CCA
- GVWR, 5070 lbs (2300 kg) (Requires all-wheel drive vehicles and (LAF) 2.4L DOHC 4-cylinder SIDI engine.)
- Chassis, all-wheel drive (1LM26 model only.)
- Suspension, front independent MacPherson strut with stabilizer bar, optimally-tuned shocks and hydraulic-ride bushings in front control arms
- Suspension, rear independent multi-link with hydraulic rear trailing arm links and stabilizer bar
- Suspension, Refined Ride- Brakes, 4-wheel antilock, 4-wheel disc- Exhaust, single

Price excludes \$699.00 processing fee, registration fees and State and Local sales taxes. 3% surcharge will be added on all CC charges over \$500.00. Deposits are non-refundable. All our sales are based on first-come-first-serve policy. We work very hard to accurately describe our vehicles through text descriptions and elaborate photos. When you purchase a pre-owned vehicle it is not a new vehicle. Any used vehicle can have normal wear and blemishes. Please read the descriptions thoroughly and view all pictures.

Sterling Motorsport

Sterling Motorsport

View this car on our website at [sterlingmotorsport.com/6607764](https://sterlingmotorsport.com/6607764)

Website: [sterlingmotorsport.com](https://sterlingmotorsport.com)

Phone: [571-313-1989](tel:571-313-1989)

Map: [9 Douglas Court Unit 101, Sterling, VA 20166](#)

