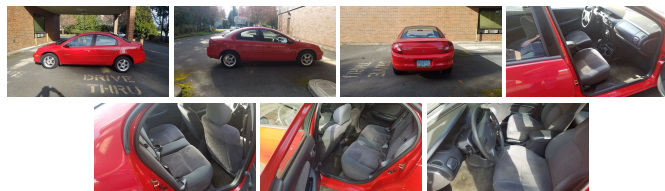


2000 Plymouth Neon Highline

View this car on our website at priceisrightoregon.com/6606595/ebrochure



Our Price **\$1,695**

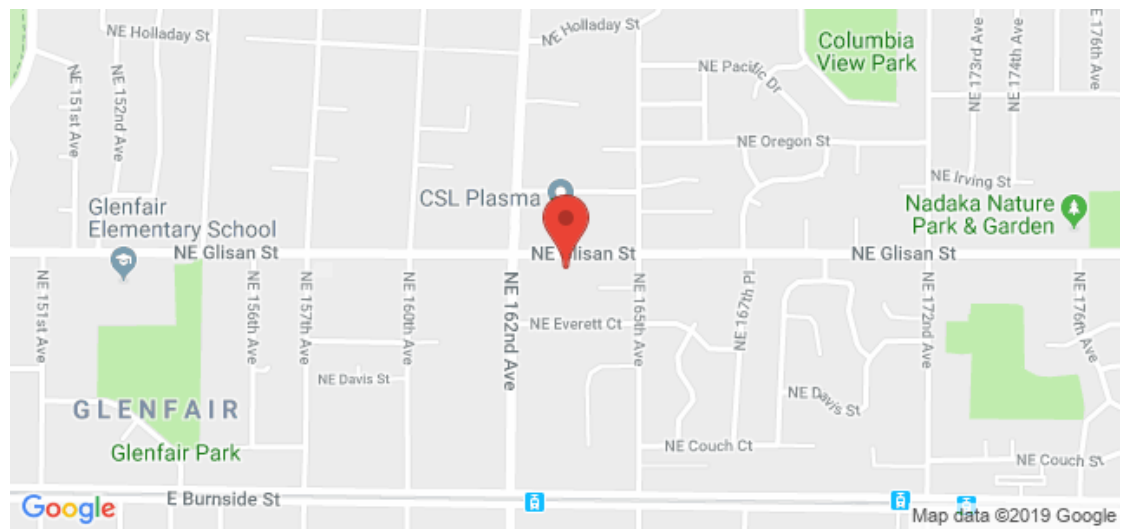
Specifications:

Year:	2000
VIN:	1P3ES46C0YD866049
Make:	Plymouth
Model/Trim:	Neon Highline
Condition:	Pre-Owned
Body:	Sedan
Exterior:	Red
Engine:	2.0L (122) SOHC SMPI 16-VALVE 4-CYL ENGINE
Interior:	Gray Cloth
Mileage:	158,401
Drivetrain:	Front Wheel Drive
Economy:	City 25 / Highway 31

2000 Plymouth Neon Highline

Price is Right Oregon - 971-279-2550 - View this car on our website at priceisrightoregon.com/6606595/ebrochure

Our Location :



2000 Plymouth Neon Highline

Price is Right Oregon - 971-279-2550 - View this car on our website at priceisrightoregon.com/6606595/ebrochure

Installed Options

Interior

- 12V pwr outlet in front center panel - 3 front cup holders-inc: 1 jumbo center cup holder
- 60/40 split folding back rear bench seat w/head restraints
- Automatic fade dome light w/battery saver
- Cloth low back front bucket seats w/2-way adjustable locking head restraints
- Door sill scuff pads- Door trim-inc: padded armrest, front door map pockets
- Dual rear coat hooks
- Electronic AM/FM stereo radio w/cassette-inc: (6) speakers, digital clock, CD changer control
- Fixed antenna
- Floor mounted console-inc: storage armrest, front cubby box, tissue box holder
- Front/rear carpeted floor mats- Full floor/cargo area carpeting
- Instruments-inc: fuel & temperature gauges, digital trip odometer- Locking glove box
- Low fuel warning chime- Passenger visor vanity mirror- Rear cupholder
- Rear window defroster- Tilt steering column- Trunk light
- Warning lamps-inc: airbags, seat belts, high beams, oil pressure, brake system, check engine

Exterior

- Body-color door handles/body-side moldings/front/rear fascias- Halogen headlights
- Remote driver/manual passenger mirror- Tinted glass
- Variable intermittent windshield wipers

Safety

- 12V pwr outlet in front center panel - 3 front cup holders-inc: 1 jumbo center cup holder
- 60/40 split folding back rear bench seat w/head restraints
- Automatic fade dome light w/battery saver
- Cloth low back front bucket seats w/2-way adjustable locking head restraints
- Door sill scuff pads- Door trim-inc: padded armrest, front door map pockets
- Dual rear coat hooks
- Electronic AM/FM stereo radio w/cassette-inc: (6) speakers, digital clock, CD changer control
- Fixed antenna
- Floor mounted console-inc: storage armrest, front cubby box, tissue box holder
- Front/rear carpeted floor mats- Full floor/cargo area carpeting
- Instruments-inc: fuel & temperature gauges, digital trip odometer- Locking glove box
- Low fuel warning chime- Passenger visor vanity mirror- Rear cupholder
- Rear window defroster- Tilt steering column- Trunk light
- Warning lamps-inc: airbags, seat belts, high beams, oil pressure, brake system, check engine

Mechanical

- 12.5 gallon fuel tank- 14" x 5.5" black steel wheels w/bolt-on full wheel covers
- 2.0L (122) SOHC SMPI 16-valve 4-cyl engine - 450 CCA maintenance free battery
- 5-speed manual transaxle w/OD- 83 amp alternator
- Front MacPherson strut suspension w/asymmetrical lower control arms- Front wheel drive
- Front/rear stabilizer bar/coil springs- P185/65R14 all-season touring SBR BSW tires
- Pwr front disc/rear drum brakes- Pwr rack & pinion steering
- Rear Chapman strut suspension w/dual lower transverse links/trailing links

Option Packages

Factory Installed Packages

-
2.0L (122) SOHC SMPI 16-VALVE 4-CYL
ENGINE

Price is Right Oregon
priceisrightoregon.com
971-279-2550

16306 NE Glisan St
Portland, OR 97230

© 2019 AutoRevo - All rights reserved. - Powered by [AutoRevo](#)