

2017 Ford F-150 SHELBY 4X4 MSRP 101K,LIFTED,SUPERCHARGED,36K!

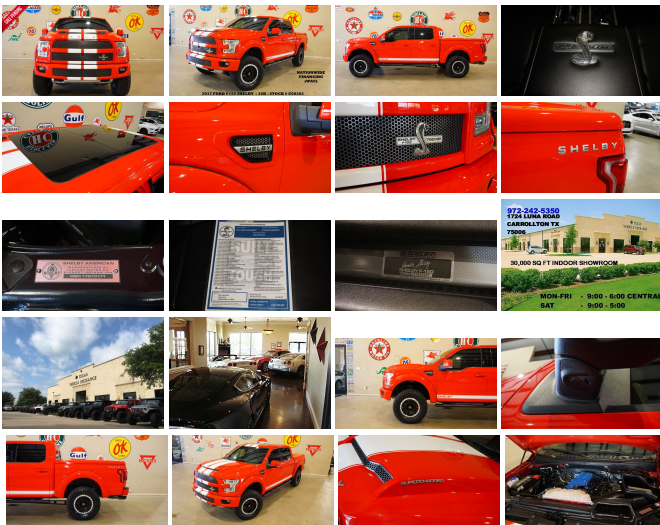
View this car on our website at tveauto.com/6605088/ebrochure



Our Price **\$69,900**

Specifications:

Year:	2017
VIN:	1FTEW1EFXHKC08362
Make:	Ford
Stock:	C08362
Model/Trim:	F-150 SHELBY 4X4 MSRP 101K,LIFTED,SUPERCHARGED,36K!
Condition:	Pre-Owned
Body:	Pickup Truck
Exterior:	Race Red
Engine:	ENGINE: 5.0L V8 FFV
Interior:	Black Leather
Transmission:	TRANSMISSION: ELECTRONIC 10- SPEED AUTOMATIC
Mileage:	36,608
Drivetrain:	4 Wheel Drive
Economy:	City 15 / Highway 21



NATION WIDE FINANCING

SUBMIT CREDIT APP WWW.TVEAUTO.COM

OR CALL 972-242-5350

2017 FORD F150 SUPER CREW SHELBY EDITION 4X4 #171, 5.0L WHIPPLE SUPERCHARGED V8 ENGINE "750 HP", 10 SPEED AUTOMATIC TRANSMISSION, ONLY 36K, RACE RED W/CUSTOM SHELBY BLACK LEATHER INTERIOR, CARFAX REPORTS 2 OWNERS NO ACCIDENTS, APPEARS TO BE A NON-SMOKER, REMOTE START, FOGLIGHTS, SHELBY FUNCTIONAL DUAL INTAKE RAM AIR HOOD, BDS SUSPENSION LIFT BY SHELBY WITH FOX RACE SERIES

INTERNAL BYPASS SHOCKS, TWIN PANEL MOONROOF, TOUCH SCREEN NAVIGATION, BACK-UP CAMERA, 360 VIEW CAMERAS, BLACK TUBULAR STEPS, POWER WINDOWS, POWER DOOR LOCKS, POWER FOLDING HEATED MIRRORS WITH TURN SIGNALS, BLIND SPOT CONTROL, POWER & HEATED TILT/TELESCOPE STEERING WHEEL WITH AUDIO & CRUISE CONTROLS, DUAL POWER HEATED & COOLED FRONT SEATS WITH DRIVER 3 MEMORY POSITION, POWER ADJUSTABLE PEDALS, TRACTION CONTROL, LANE KEEPING ASSIST, ICE COLD A/C, DUAL CLIMATE CONTROL, SONY HD AM/FM/SIRIUS STEREO WITH CD PLAYER, MICROSOFT SYNC VOICE ACTIVATED SYSTEM, SELF DIMMING REAR VIEW MIRROR, HOMELINK GARAGE CONTROLS, DUAL LIGHTED VANITY MIRRORS, REAR HEATED SEATS, REAR A/C VENTS, POWER SLIDING REAR WINDOW, PANTED TO MATCH BED COVER, SHELBY BED RUG LINER, TAILGATE STEP, SHELBY TUNED EXHAUST SYSTEM, REAR PARK DISTANCE SENSORS, TOW PACKAGE WITH RECEIVER HITCH, RUBBER & CLOTH FLOOR MATS, OWNER'S MANUAL, 2 KEYS/2 REMOTES. 18" SHELBY BLACK ALLOY WHEELS, FRONT TIRES ARE BRAND NEW NITTO RIDGE GRAPPLER 35X12.50R/18, REAR TIRES ARE BRAND NEW NITTO RIDGE GRAPPLER 35X12.50R/18. RUNS AND DRIVES GREAT. GIVE US A CALL @ 972-242-5350 OR STOP BY FOR A TEST DRIVE. 1724 LUNA RD IN CARROLLTON - 2 MILES NORTH OF 635. CLICK ON CARFAX ICON TO VIEW A FULL REPORT AT NO COST TO YOU.

2017 Ford F-150 SHELBY 4X4 MSRP 101K,LIFTED,SUPERCHARGED,36K!

Texas Vehicle Exchange - 972-242-5350 - View this car on our website at veauto.com/6605088/ebrochure

Our Location :



2017 Ford F-150 SHELBY 4X4 MSRP 101K,LIFTED,SUPERCHARGED,36K!

Texas Vehicle Exchange - 972-242-5350 - View this car on our website at veauto.com/6605088/ebrochure

Installed Options

Interior

- 2 Seatback Storage Pockets- 3 12V DC Power Outlets
- 60-40 Folding Split-Bench Front Facing Fold-Up Cushion Rear Seat - Analog Display
- Cruise Control w/Steering Wheel Controls- Day-Night Auto-Dimming Rearview Mirror
- Delayed Accessory Power- Door Mirrors and Pedals
- Driver And Passenger Visor Vanity Mirrors w/Driver And Passenger Illumination
- Driver Seat- FOB Controls -inc: Trunk/Hatch/Tailgate- Fade-To-Off Interior Lighting
- Front And Rear Map Lights- Front Center Armrest w/Storage and Rear Center Armrest
- Front Cupholder- Full Carpet Floor Covering -inc: Carpet Front And Rear Floor Mats
- Full Cloth Headliner- Full Overhead Console w/Storage and 3 12V DC Power Outlets
- Gauges -inc: Speedometer, Odometer, Voltmeter, Oil Pressure, Engine Coolant Temp, Tachometer, Inclinator, Transmission Fluid Temp, Trip Odometer and Trip Computer
- Glove Box- HVAC -inc: Underseat Ducts
- Instrument Panel Bin, Dashboard Storage, Driver / Passenger And Rear Door Bins, 1st Row Underseat Storage and 2nd Row Underseat Storage
- Interior Trim -inc: Simulated Wood/Metal-Look Instrument Panel Insert, Cabback Insulator, Simulated Wood/Metal-Look Door Panel Insert and Chrome Interior Accents
- Keypad
- Leather-Trimmed 40/20/40 Front Seat -inc: 4-way adjustable driver/passenger headrests, heated/cooled 10-way power driver and passenger w/power lumbar and memory driver's seat
- Leather/Metal-Look Steering Wheel- Manual Adjustable Rear Head Restraints
- Manual Tilt/Telescoping Steering Column- Mobile Hotspot Internet Access
- Outside Temp Gauge- Passenger Seat- Perimeter Alarm- Pickup Cargo Box Lights
- Power 1st Row Windows w/Driver And Passenger 1-Touch Up/Down
- Power Adjustable Pedals- Power Door Locks w/Autolock Feature- Power Rear Windows
- Proximity Key For Doors And Push Button Start - Rear Cupholder
- Redundant Digital Speedometer
- Remote Keyless Entry w/Integrated Key Transmitter, Illuminated Entry and Panic Button
- SYNC 3 -inc: enhanced voice recognition communications and entertainment system, 8" LCD capacitive touchscreen in center stack w/swipe capability, pinch-to-zoom capability

included w/available voice-activated touchscreen navigation system, SYNC AppLink, 911 Assist, Apple CarPlay and Android Auto and 2 smart charging USB ports, Note: SYNC AppLink lets you control some of your favorite compatible mobile apps w/your voice, It is compatible w/select smartphone platforms, Commands may vary by phone and AppLink software

- Securilock Anti-Theft Ignition (pats) Engine Immobilizer- Systems Monitor- Trip Computer
- Urethane Gear Shift Knob- Voice Activated Dual Zone Front Automatic Air Conditioning

Exterior

- Aluminum Panels- Black Side Windows Trim and Black Front Windshield Trim
- Body-Colored Door Handles
- Body-Colored Power Heated Side Mirrors w/Driver Auto Dimming, Convex Spotter, Power Folding and Turn Signal Indicator
- Body-Colored Wheel Well Trim- Cargo Lamp w/High Mount Stop Light
- Chrome Front Bumper w/Body-Colored Rub Strip/Fascia Accent and 2 Tow Hooks
- Chrome Grille- Chrome Rear Step Bumper- Clearcoat Paint- Deep Tinted Glass
- Front Fog Lamps- Full-Size Spare Tire Stored Underbody w/Crankdown
- Fully Automatic Aero-Composite Halogen Daytime Running Lights Preference Setting Headlamps w/Delay-Off
- Perimeter/Approach Lights- Power Rear Window w/Defroster- Regular Box Style
- Steel Spare Wheel- Tailgate Rear Cargo Access
- Tailgate/Rear Door Lock Included w/Power Door Locks- Tires: P275/65R18 OWL A/S
- Variable Intermittent Wipers- Wheels: 18" Machined-Aluminum -inc: silver painted pockets

Safety

- 2 Seatback Storage Pockets- 3 12V DC Power Outlets
- 60-40 Folding Split-Bench Front Facing Fold-Up Cushion Rear Seat - Analog Display
- Cruise Control w/Steering Wheel Controls- Day-Night Auto-Dimming Rearview Mirror
- Delayed Accessory Power- Door Mirrors and Pedals
- Driver And Passenger Visor Vanity Mirrors w/Driver And Passenger Illumination
- Driver Seat- FOB Controls -inc: Trunk/Hatch/Tailgate- Fade-To-Off Interior Lighting
- Front And Rear Map Lights- Front Center Armrest w/Storage and Rear Center Armrest
- Front Cupholder- Full Carpet Floor Covering -inc: Carpet Front And Rear Floor Mats
- Full Cloth Headliner- Full Overhead Console w/Storage and 3 12V DC Power Outlets
- Gauges -inc: Speedometer, Odometer, Voltmeter, Oil Pressure, Engine Coolant Temp, Tachometer, Inclinator, Transmission Fluid Temp, Trip Odometer and Trip Computer
- Glove Box- HVAC -inc: Underseat Ducts
- Instrument Panel Bin, Dashboard Storage, Driver / Passenger And Rear Door Bins, 1st Row Underseat Storage and 2nd Row Underseat Storage
- Interior Trim -inc: Simulated Wood/Metal-Look Instrument Panel Insert, Cabback Insulator, Simulated Wood/Metal-Look Door Panel Insert and Chrome Interior Accents
- Keypad
- Leather-Trimmed 40/20/40 Front Seat -inc: 4-way adjustable driver/passenger headrests, heated/cooled 10-way power driver and passenger w/power lumbar and memory driver's seat
- Leather/Metal-Look Steering Wheel- Manual Adjustable Rear Head Restraints
- Manual Tilt/Telescoping Steering Column- Mobile Hotspot Internet Access
- Outside Temp Gauge- Passenger Seat- Perimeter Alarm- Pickup Cargo Box Lights
- Power 1st Row Windows w/Driver And Passenger 1-Touch Up/Down
- Power Adjustable Pedals- Power Door Locks w/Autolock Feature- Power Rear Windows
- Proximity Key For Doors And Push Button Start - Rear Cupholder
- Redundant Digital Speedometer
- Remote Keyless Entry w/Integrated Key Transmitter, Illuminated Entry and Panic Button
- SYNC 3 -inc: enhanced voice recognition communications and entertainment system, 8" LCD capacitive touchscreen in center stack w/swipe capability, pinch-to-zoom capability included w/available voice-activated touchscreen navigation system, SYNC AppLink, 911 Assist, Apple CarPlay and Android Auto and 2 smart charging USB ports, Note: SYNC AppLink lets you control some of your favorite compatible mobile apps w/your voice, It is compatible w/select smartphone platforms, Commands may vary by phone and AppLink software
- Securilock Anti-Theft Ignition (pats) Engine Immobilizer- Systems Monitor- Trip Computer
- Urethane Gear Shift Knob- Voice Activated Dual Zone Front Automatic Air Conditioning

Mechanical

- 1630# Maximum Payload- 200 Amp Alternator- 23 Gal. Fuel Tank- 3.55 Axle Ratio
- 4-Wheel Disc Brakes w/4-Wheel ABS, Front And Rear Vented Discs, Brake Assist and Hill Hold Control
- 70-Amp/Hr 610CCA Maintenance-Free Battery w/Run Down Protection
- Auto Locking Hubs- Automatic Full-Time Four-Wheel Drive
- Class IV Trailer Hitch Receiver -inc: towing capability up to 5,000 lbs, on 3.5L Ti-VCT engine (998) and 2.7L EcoBoost engine (99P) or up to 7,000 lbs, on 3.5L EcoBoost engine (99G) and 5.0L V8 engine (99F), smart trailer tow connector and 4-pin/7-pin wiring harness Ordering the Trailer Tow Package does not include Integrated Brake Controller (67T). Integrated Brake Controller (67T) is a standalone option and must be ordered separately.
- Double Wishbone Front Suspension w/Coil Springs

- Double wishbone front suspension w/coil springs
- Electric Power-Assist Speed-Sensing Steering- Electronic Transfer Case
- Engine: 2.7L V6 EcoBoost -inc: auto start/stop - Front Anti-Roll Bar
- GVWR: 6,500 lbs Payload Package- Gas-Pressurized Shock Absorbers
- Leaf Rear Suspension w/Leaf Springs- Single Stainless Steel Exhaust
- Towing Equipment -inc: Trailer Sway Control
- Transmission w/SelectShift Sequential Shift Control
- Transmission: Electronic 6-Speed Automatic -inc: tow/haul and sport mode

Option Packages

Factory Installed Packages

ENGINE: 5.0L V8 FFV
 -inc: 3.31 Axle Ratio, GVWR:
 7,000 lbs Payload Package \$800

TRANSMISSION: ELECTRONIC 10-
 SPEED AUTOMATIC
 -inc: tow/haul mode and sport
 mode \$500

TAILGATE STEP W/TAILGATE LIFT
 ASSIST \$375

TECHNOLOGY PACKAGE \$990
 -inc: Lane-Keeping System, 360
 camera w/split-view display
 and dynamic hitch assist

TWIN PANEL MOONROOF
 \$1,295

VOICE-ACTIVATED NAVIGATION \$795
 -inc: SiriusXM Traffic and Travel
 Link. Note: SiriusXM Traffic
 and Travel Link includes a 5-
 year prepaid subscription,
 Services are not available in
 Alaska and Hawaii

RACE RED

BLACK, LEATHER-TRIMMED BUCKET
 SEATS \$650
 -inc: 4-way adjustable
 driver/passenger headrests,
 heated and cooled 10-way
 power driver and passenger
 w/power lumbar, memory
 driver's seat, flow through
 console w/floor shift and 2nd
 outlet in console when ordered
 w/110V/400W outlet (91V)

Option Packages Total
 \$5,405

1724 Luna Road
Carrollton, TX 75006

© 2019 AutoRevo - All rights reserved. - Powered by [AutoRevo](#)