



2011 BMW M Models M3 COUPE NAVIGATION NEW TIRES SERVICE RECORDS XLNT CONDITION

Contact Sales 310-987-1212

Our Price \$22,990

Retail Value \$28,590

View this vehicle on our website at boutiqueautosales.com

Boutique Auto Sales

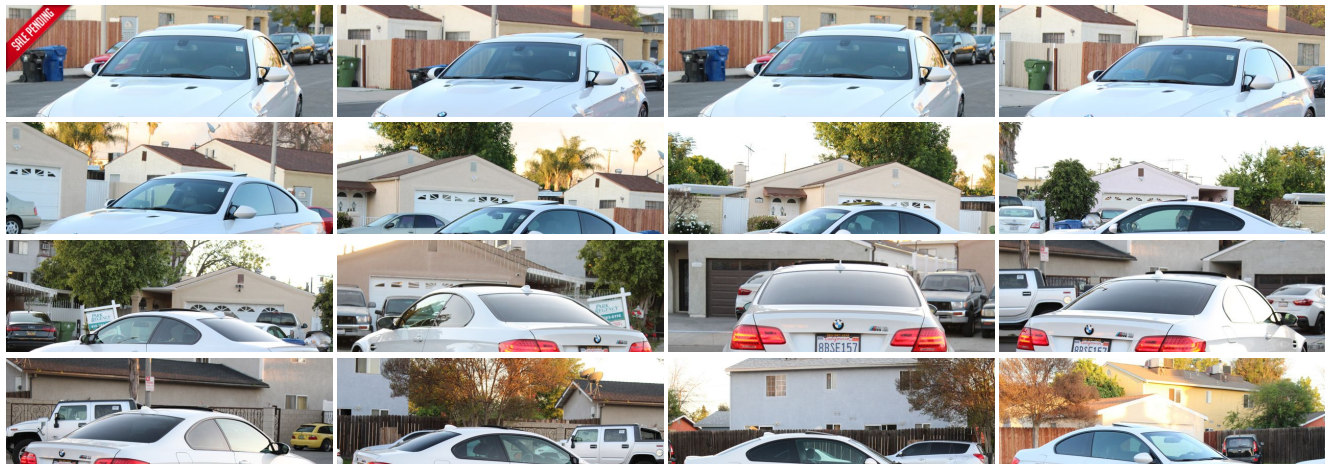
[310-987-1212](tel:310-987-1212)

5950 Laurel Canyon Blvd, North Hollywood, CA 91607

Photos

Details

Contact





Specifications:

Year:	2011
VIN:	WBSKG9C53BE796838
Make:	BMW
Stock:	6838
Model/Trim:	M Models M3 COUPE NAVIGATION NEW TIRES SERVICE RECORDS XLNT CONDITION
Condition:	Pre-Owned
Body:	Coupe
Exterior:	Alpine White
Engine:	4.0-liter 32-valve 414-hp V-8 engine with M Double-VANOS "steplessly" variable valve timing
Interior:	Fox Red/Black Leather
Transmission:	7-SPEED M DOUBLE CLUTCH TRANSMISSION
Mileage:	88,148
Drivetrain:	Rear Wheel Drive
Economy:	City 14 / Highway 20

Vehicle Description

Installed Options

Interior

- 3-spoke, leather-wrapped multi-function M sport steering wheel with audio and (accessory) phone controls, M color stitching and tilt/telescopic adjustment (M Drive button included with multi-function controls with Technology Package option)
- Adjustable front armrest- Anthracite and Black Cloth/Leather upholstery
- Anthracite headliner
- Automatic climate control includes micro-filter, automatic air recirculation, left/right temperature control, temperature- and volume-controlled rear outlets, windshield misting sensor, MAX A/C, heat at rest, and recall of individual user settings
- Automatic-dimming inside rear-view mirror- Auxiliary pwr outlet
- BMW Ambiance Lighting front and rear
- Central locking system (leaves gas filler door unlocked) and double-lock feature
- Check Control vehicle monitoring system
- Coded Driveway Protection (prevents engine start when your key, with constantly changing electronic code, is not used)
- Console valet and cupholders
- Courtesy lights include fade in/fade out, actuation from remote, automatic switch-on when engine is turned off, separately controlled left/right front and rear reading lights, front footwell lighting, and illuminated vanity mirrors
- Cruise Control with column-mounted stalk
- Digital Motor Electronics (DME) with on-board diagnostics
- Door sills with BMW M3 logo- Electric interior trunk release- Folding rear-seat headrests
- Front seatback storage nets- Fully finished trunk
- Keyless entry -inc: remote trunk release
- M-design instrument cluster with titanium-finish-ringed instrument dials and red needles
- Multi-function remote control
- On-board computer with detailed vehicle information including travel range on remaining fuel, external temperature (including freezing temperature warning)
- Power front/rear windows with "one-touch" up/down operation (in M3 coupe, rear windows are stationary and do not include up/down operation)
- Power-adjustable front sport seats with 4-way lumbar support, manually adjustable thigh support and memory system for driver's seat and outside mirrors
- Rear window defogger- Service Interval Indicator with miles-to-service display
- Smoker's pkg -inc: cigarette lighter, ash tray - Split fold-down rear seat
- Tachometer with variable warning zones and oil temperature display

Option Packages

Factory Installed Packages

7-SPEED M DOUBLE CLUTCH TRANSMISSION	-inc: Drivelogic	\$2,900
19" X 8.5" FRONT & 19" X 9.5" REAR DOUBLE-SPOKE LIGHT ALLOY WHEELS (STYLE 220M)	-inc: P245/35R19 front & P265/35R19 rear run-flat performance tires	\$1,250
ANTI-THEFT ALARM SYSTEM		\$400
AUTO HIGH BEAMS		\$250
BLUE-GRAY BRUSHED ALUMINUM TRIM		\$500
BMW APPS	-inc: smartphone integration	\$250
BMW ASSIST	-inc: Bluetooth, Combox controller	\$750
CARBON LEATHER INTERIOR TRIM		\$500
COLD WEATHER PKG	-inc: heated front seats, ski bag, retractable headlight washers	\$750

- Titanium Shadow interior trim- Vehicle & Key Memory

Exterior

- Adaptive Brake Lights- Aluminum hood with powerdome
- Automatic tilt-down of passenger's side-view mirror when vehicle is shifted into reverse gear
- Carbon-fiber roof (not available with moonroof, which requires a steel roof)
- Double Spoke (Style 219M) Satin Chrome finish M light alloy wheels 18 x 8.5 front, 18 x 9.5 rear; 245/40 front and 265/40 rear performance tires
- Flared front and rear fenders including wheel arches; vent gills in front fenders with integrated indicator and M3 logo
- Front and rear spoiler- Heated side-view mirrors, windshield washer jets and door locks
- M Mobility System (includes lifetime BMW Roadside Assistance for tire assistance)
- M pwr exterior side-view mirrors in body color with double bridge in black
- M rear apron with diffuser
- Rain-sensing windshield wipers with Automatic headlight control- Shadowline trim
- White turn-signal indicators
- Xenon Adaptive low- and high-beam headlights with auto-leveling and Cornering Lights function

Safety

- 3-spoke, leather-wrapped multi-function M sport steering wheel with audio and (accessory) phone controls, M color stitching and tilt/telescopic adjustment (M Drive button included with multi-function controls with Technology Package option)
- Adjustable front armrest- Anthracite and Black Cloth/Leather upholstery
- Anthracite headliner
- Automatic climate control includes micro-filter, automatic air recirculation, left/right temperature control, temperature- and volume-controlled rear outlets, windshield misting sensor, MAX A/C, heat at rest, and recall of individual user settings
- Automatic-dimming inside rear-view mirror- Auxiliary pwr outlet
- BMW Ambiance Lighting front and rear
- Central locking system (leaves gas filler door unlocked) and double-lock feature
- Check Control vehicle monitoring system
- Coded Driveaway Protection (prevents engine start when your key, with constantly changing electronic code, is not used)
- Console valet and cupholders
- Courtesy lights include fade in/fade out, actuation from remote, automatic switch-on when engine is turned off, separately controlled left/right front and rear reading lights, front footwell lighting, and illuminated vanity mirrors
- Cruise Control with column-mounted stalk
- Digital Motor Electronics (DME) with on-board diagnostics
- Door sills with BMW M3 logo- Electric interior trunk release- Folding rear-seat headrests
- Front seatback storage nets- Fully finished trunk
- Keyless entry -inc: remote trunk release
- M-design instrument cluster with titanium-finish-ringed instrument dials and red needles
- Multi-function remote control
- On-board computer with detailed vehicle information including travel range on remaining fuel, external temperature (including freezing temperature warning)
- Power front/rear windows with "one-touch" up/down operation (in M3 coupe, rear windows are stationary and do not include up/down operation)
- Power-adjustable front sport seats with 4-way lumbar support, manually adjustable thigh support and memory system for driver's seat and outside mirrors
- Rear window defogger- Service Interval Indicator with miles-to-service display
- Smoker's pkg -inc: cigarette lighter, ash tray - Split fold-down rear seat
- Tachometer with variable warning zones and oil temperature display
- Titanium Shadow interior trim- Vehicle & Key Memory

Mechanical

- 6-speed manual transmission with additional oil cooler and heavy-duty dual-disc clutch
- 3-way catalytic converter with heated oxygen sensor
- 4-wheel BMW M vacuum-assisted ventilated, cross-drilled compound disc brakes with floating brake rotors
- 4.0-liter 32-valve 414-hp V-8 engine with M Double-VANOS "steplessly" variable valve timing
- 8 individual throttles, electronically controlled (drive-by-wire)
- All Season Traction with Variable M Differential Lock
- Distributorless electronic ignition system- Engine Start/Stop button
- Flat-paneled underbody- Gas-pressurized front struts and rear shock absorbers
- M drive- M quad polished stainless steel exhaust tips
- M suspension with twin-joint spring-strut front axle, subframe, front axle tie-rod and stiffening plate in aluminum, rear axle subframe in steel, track control arm and spring strut in aluminum and lightweight steel construction
- Oil coolant heat exchanger- Rear wheel drive
- Vehicle-speed-sensitive variable-assist power steering (M Servotronic)

CONVENIENCE PKG

-inc: anti-theft alarm system, comfort access keyless entry, rear park distance control, navigation system, voice command, iPod & USB adapter, real time traffic information, BMW Assist w/Bluetooth, online info services

DYNAMIC DAMPER CONTROL

\$1,000

ENHANCED PREMIUM SOUND

\$1,900

HEATED FRONT SEATS

\$500

IPOD & USB ADAPTER

\$400

MOONROOF

NAVIGATION SYSTEM

-inc: real time traffic info, voice command

\$2,100

PREMIUM PKG

-inc: pwr folding exterior mirrors, universal garage door opener, upgraded interior trim, digital compass mirror, BMW Assist, Bluetooth, upgraded seat trim

\$2,000

PREMIUM PKG 2

-inc: pwr folding exterior mirrors, universal garage door opener, upgraded interior trim, digital compass mirror, BMW Assist, Bluetooth, upgraded seat trim, pwr front seats

\$2,500

REAR PARK DISTANCE CONTROL

\$380

REAR PWR SUNSHADE

\$350

REAR SPOILER DELETE

SATELLITE RADIO

-inc: (1) year subscription

\$350

SMARTPHONE INTEGRATION

\$150

SYCAMORE ANTHRACITE WOOD TRIM

\$500

TECHNOLOGY PKG

-inc: dynamic damper control, comfort access keyless entry, navigation system, voice command, real time traffic info

\$3,250

ALPINE WHITE

FOX RED/BLACK, NOVILLO LEATHER SEAT TRIM

\$1,250

Option Packages Total

\$27,080

Boutique Auto Sales

Boutique Auto Sales

View this car on our website at boutiqueautosales.com/6604569

Website: boutiqueautosales.com

Phone: [310-987-1212](tel:310-987-1212)

Map: [5950 Laurel Canyon Blvd, North Hollywood, CA 91607](#)

