



## 2011 Porsche Panamera w/ Upgrades!

**Website Price \$23,995**

View this vehicle on our website at [autoparkdallas.com](http://autoparkdallas.com)



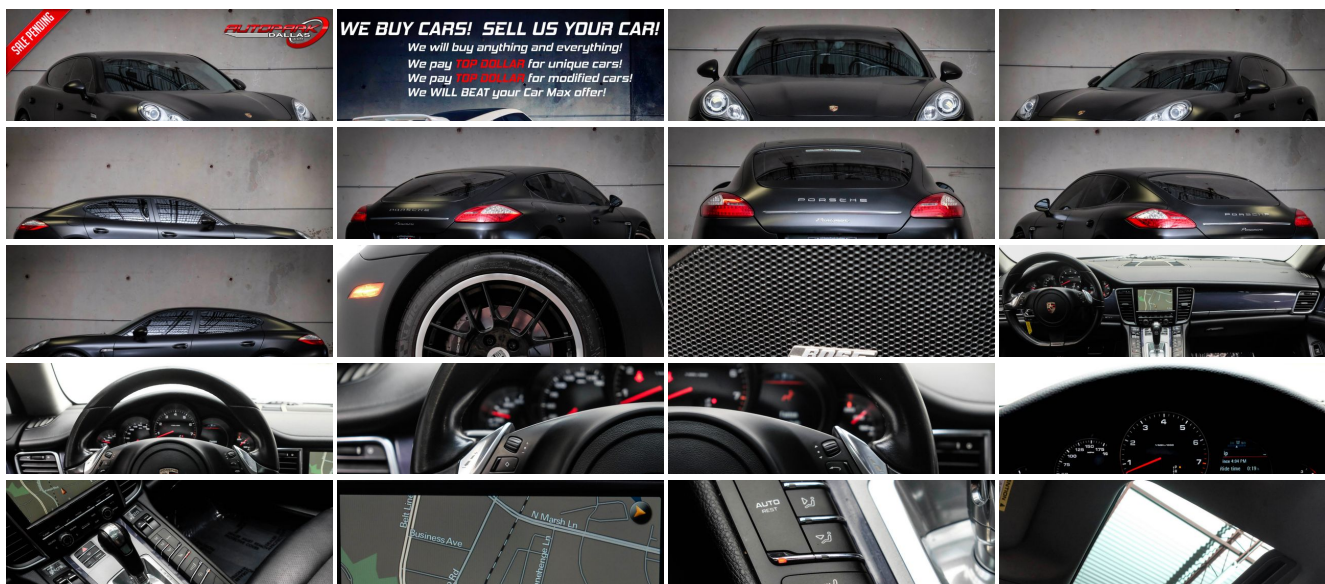
(214) 945-2601

2061 S Stemmons Fwy , Lewisville, TX 75067

Photos

Details

Contact



## Specifications:

Year:	2011
VIN:	<a href="#">WP0AA2A75BL011389</a>
Make:	Porsche
Model/Trim:	Panamera w/ Upgrades!
Condition:	Pre-Owned
Body:	Sedan
Exterior:	Black
Engine:	3.6L V6 engine
Interior:	Black Leather
Transmission:	7-speed Porsche Doppelkupplung (PDK) auto transmission -inc: manual actuation, automatic mode, gear recommendation for optimized fuel economy manual mode
Mileage:	94,931
Drivetrain:	Rear Wheel Drive
Economy:	City 18 / Highway 27

## Vehicle Description

AutoPark Dallas is excited to offer you this modified 2011 Porsche Panamera for sale! Porsche always brings their 'A' game when it comes to the engineering of vehicles and the Panamera is no let down to that. The Panamera's signature sleek body, luxurious cabin, and drivability that only a Porsche can deliver are all complimented with a professionally applied matte black wrap! This Porsche is a must see in person as pictures don't do justice, swing on by to our indoor 16,000 Sq Ft Showroom located in Addison, Tx. as this Porsche is parked amongst our inventory of 100+ unique and other luxury vehicles!

---

2011 Porsche Panamera

\*Clean CarFax!\*

### MODIFICATIONS!

Matte Black Finish Wrap

FabSpeed Cold-Air Intake

Window Tinted

### STOCK!

Solid Black Exterior

Black Leather Interior

Hands Free Bluetooth

Navigation

Heated Front Row Seats

Powered Sunroof

Front & Rear Reverse Sensors

Sport Mode

Bose Surround Sound System

Dual Climate Controls

Manual Mode w/ Paddle Shifters

Driver Seat Memory

Power Folding Mirrors  
Powered Front Row Seats  
Universal Garage Opener  
AUX & CD Capable  
3.6L V6 Engine  
7-Speed Automatic Transmission  
Rear Wheel Drive  
Professionally Detailed!  
Well Maintained!  
AND SO MUCH MORE!!!

## Financing is available!

Get pre-approved in no time by filling out a credit application on the finance section of our website!

We also offer different extended warranty options!

**\*\*All vehicles are priced for QUICK SALE. All REASONABLE offers will be considered\*\***

AutoPark Dallas is dedicated to offering a level of customer service not usually found in the automobile industry. We take pride in continuing this service long after the vehicle has been delivered. We strive for excellence and make every effort to see that our customer is completely satisfied with every purchase. Referrals and Testimonials is what our business is built on.

Our extensive buying experience guarantees quality, pre-owned and new vehicles hand-picked from factory sources. Our love for the automobile and our dislike of traditional dealership tactics motivate us to provide the service we do!

Pre-purchase inspections are always welcomed! We also offer airport shuttles, amazing finance options, extended warranties and so much more!

We accept trade-ins, will BUY your car (modified or not) even if you don't buy one from us, and offer consignment deals to SELL your vehicle for you! For more information just give us a CALL or TEXT!!

#214-945-2601

Call or Text **Anytime!**

Se habla Español

WWW.AUTOPARKDALLAS.COM

### Installed Options

#### Interior

- Cruise control- (1) front/(2) rear cupholders- (4) 12V pwr outlets
- 3-spoke multi-function tilt/telescopic leather steering wheel
- 8-way pwr heated front bucket seats -inc: driver seat memory, seatback pockets
- Anti-theft alarm system -inc: ultasonic interior monitoring
- Automatic climate control -inc: separate temperature adjustment & air distribution for driver & front passenger, automatic air recirculation w/air quality sensor, carbon filter
- Brushed aluminum door entry guards -inc: model-specific logotype in front
- Continuous center console -inc: folding armrest in the rear, sports button
- Engine immobilizer- Folding front door compartments

### Option Packages

#### Factory Installed Packages

##### 19" PANAMERA TURBO WHEELS

-inc: 5-dual spoke design alloy 19" x 9" front wheels & 19" x 10" rear wheels, 255/45ZR19 front tires, 285/40ZR19 rear tires **\$1,950**

##### BI-XENON HEADLIGHTS

-inc: Porsche dynamic light system (PDLS) **\$770**

- Front center console armrest w/integrated storage compartment - HomeLink door opener
- Illuminated visor vanity mirrors
- Instrument cluster -inc: 4.8" color display, gear indicator, service interval indicator, ambient temp display, warning indicators, trip computer
- Interior lighting -inc: delayed-off function, door opener illumination, front center console storage compartment, front door storage compartments, ignition switch illumination, reading spots & front interior lighting, rear left & right reading lights, front & rear orientation lights, front footwell illumination, front & rear door illumination
- Leather seat trim- Locking A/C cooled glove compartment
- Luggage compartment & footwell area storage nets
- Overhead console -inc: interior lights & LED reading light, warning lamp for the deactivation of passenger airbag, controls for ParkAssist
- Pwr locks- Pwr windows -inc: auto up/down, anti-jamming, door lock open/close facility
- Rear doors storage compartments
- Rear split-folding bucket seats -inc: folding center armrest
- Rear window defogger w/auto-off function
- Remote central locking w/trunk release -inc: auto pwr rear lid
- Storage compartment beneath front center console armrest
- Textured leather interior trim

## Exterior

- 18" Panamera S wheels -inc: pressure cast alloy 18" x 8" front wheels & 18" x 9" rear wheels, 245/50ZR18 summer high performance front tires, 275/45ZR18 summer high performance rear tires, tire sealing compound, electric air compressor
- Pwr folding heated mirrors w/memory
- 2-speed wiper system -inc: rain-sensing wipers, heated washer nozzles
- Adaptive 2-way rear spoiler- Aluminum automatic top-hinged tailgate
- Aluminum hood/doors/fenders
- Bi-xenon automatic headlights -inc: dynamic leveling, headlight washer system, welcome home function
- Black front air dam intakes- Black grained air outlets in fenders
- Black grained diffuser in lower rear apron- Chrome look insert in tailgate
- Chrome look side window surrounds- Front window water repellant coating
- Front/rear wheelhouse spoilers- Full underbody paneling
- Fully galvanized lightweight bodyshell in steel/aluminum hybrid design
- LED lights -inc: tail lights, brake lights- Pwr tilt/slide moonroof- Rear fog lights
- Separate front end auxiliary lights -inc: LED position lights, turn signals
- Third brake light technology integrated in tailgate
- Tinted heat-insulating glass -inc: grey top tint on windshield - Variable door stop

## Safety

- Cruise control- (1) front/(2) rear cupholders- (4) 12V pwr outlets
- 3-spoke multi-function tilt/telescopic leather steering wheel
- 8-way pwr heated front bucket seats -inc: driver seat memory, seatback pockets
- Anti-theft alarm system -inc: ultasonic interior monitoring
- Automatic climate control -inc: separate temperature adjustment & air distribution for driver & front passenger, automatic air recirculation w/air quality sensor, carbon filter
- Brushed aluminum door entry guards -inc: model-specific logotype in front
- Continuous center console -inc: folding armrest in the rear, sports button
- Engine immobilizer- Folding front door compartments
- Front center console armrest w/integrated storage compartment - HomeLink door opener
- Illuminated visor vanity mirrors
- Instrument cluster -inc: 4.8" color display, gear indicator, service interval indicator, ambient temp display, warning indicators, trip computer
- Interior lighting -inc: delayed-off function, door opener illumination, front center console storage compartment, front door storage compartments, ignition switch illumination, reading spots & front interior lighting, rear left & right reading lights, front & rear orientation lights, front footwell illumination, front & rear door illumination
- Leather seat trim- Locking A/C cooled glove compartment
- Luggage compartment & footwell area storage nets
- Overhead console -inc: interior lights & LED reading light, warning lamp for the deactivation of passenger airbag, controls for ParkAssist
- Pwr locks- Pwr windows -inc: auto up/down, anti-jamming, door lock open/close facility
- Rear doors storage compartments
- Rear split-folding bucket seats -inc: folding center armrest
- Rear window defogger w/auto-off function
- Remote central locking w/trunk release -inc: auto pwr rear lid
- Storage compartment beneath front center console armrest
- Textured leather interior trim

## Mechanical

- 3.6L V6 engine
- 7-speed Porsche Doppelkupplung (PDK) auto transmission -inc: manual actuation,

## BOSE SURROUND SOUND-SYSTEM

-inc: (14) speakers w/200-watt subwoofer, 9-channel amp, 585-watt total output, Centerpoint 2, SurroundStage, AudioPilot noise compensation

\$1,440

## FRONT/REAR PARK ASSIST W/REARVIEW CAMERA

-inc: bumper-mounted ultrasonic sensors, audio warning signal, graphic distance display in center display, color rearview picture w/dynamic guidelines in PCM

\$1,255

## HEATED FRONT SEATS

\$525

## SERVOTRONIC STEERING

\$270

## BLACK

## STANDARD PAINT

## BLACK, PARTIAL LEATHER SEAT TRIM

## Option Packages Total

\$6,210

- automatic mode, gear recommendation for optimized fuel economy manual mode
- Aluminum cylinder block & heads
- Automatic start-stop engine function -inc: deactivation button on center console
- Cylinder-specific exhaust cam contours- Cylinder-specific knock control
- Direct fuel injection system (DFI)- Double wishbone front suspension
- Dual-twin stainless steel tailpipes- Electronic engine management- Electronic throttle
- Engine drag torque control (EDTC)- Hydraulic valve lash adjusters- Idle-speed control
- Integrated dry-sump lubrication w/dual oil pickup- Magnesium valve covers
- Multi-link LSA rear suspension w/stabilizer bar
- On-board-diagnosis for monitoring emission control system
- Pwr 4-wheel vented disc brakes -inc: 6-piston front/4-piston rear monobloc fixed alloy silver brake calipers
- Pwr assisted steering w/variable ratio- Rear wheel drive- Returnless fuel system
- Static high-voltage distribution w/individual ignition coils- Steel suspension
- VarioCam Plus continuously variable valve timing system
- Water-cooling w/thermal management



Auto Park Dallas

View this car on our website at [autoparkdallas.com/6604384](http://autoparkdallas.com/6604384)

Website: [autoparkdallas.com](http://autoparkdallas.com)

Phone: (214) 945-2601

Map: [2061 S Stemmons Fwy, Lewisville, TX 75067](#)

