

2018 Jeep Wrangler JL Unlimited Sahara 4X4 LIFTED,LED'S,NAV,HTD LTH,20'S!

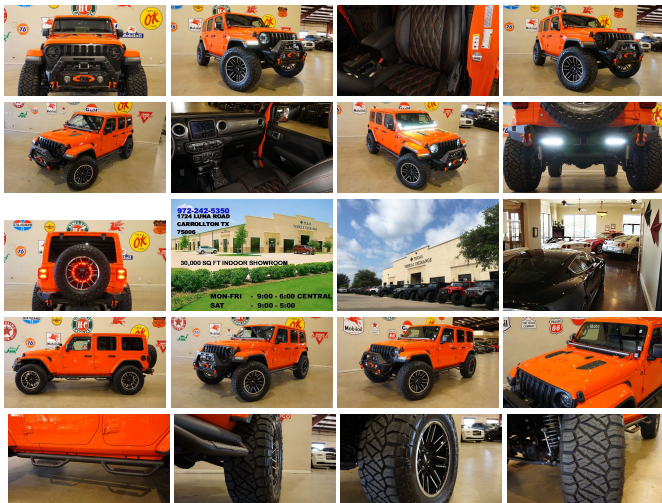
View this car on our website at tveauto.com/6596397/ebrochure



Our Price **\$54,900**

Specifications:

Year:	2018
VIN:	1C4HJXEG2JW229471
Make:	Jeep
Stock:	229471
Model/Trim:	Wrangler JL Unlimited Sahara 4X4 LIFTED,LED'S,NAV,HTD LTH,20'S!
Condition:	Pre-Owned
Body:	SUV
Exterior:	Punkn Metallic Clearcoat
Engine:	ENGINE: 3.6L V6 24V VVT UPG I W/ESS
Interior:	Black Leather
Transmission:	TRANSMISSION: 8-SPEED AUTOMATIC (850RE)
Mileage:	10,729
Drivetrain:	4 Wheel Drive
Economy:	City 17 / Highway 23



NATION WIDE FINANCING

SUBMIT CREDIT APP WWW.TVEAUTO.COM

OR CALL 972-242-5350

"PUNK'N METALLIC EDITION"

CUSTOM BUILT 2018 JEEP WRANGLER JL
UNLIMITED SAHARA 4X4 WITH 24G
PACKAGE

UPGRADES INCLUDE:

- * PUNK'N METALLIC CLEAR COAT
- * PAINTED TO MATCH FENDER FLARES
- * PAINTED TO MATCH 3 PIECE HARD TOP

- * CUSTOM ALEA BLACK LEATHER WITH ORANGE STITCHING
- * HEATED FRONT SEATS
- * LED LIGHTING GROUP
- * JEEP ACTIVE SAFETY GROUP
- * SELEC-TRAC FULL TIME 4WD SYSTEM
- * ANTI-SPIN DIFFERENTIAL REAR AXLE
- * TRAILER TOW AND HD ELECTRICAL GROUP

- * FACTORY 8.4 INCH TOUCH SCREEN NAVIGATION WITH HD AM/FM/SIRIUS STEREO & ALPINE PREMIUM AUDIO SYSTEM
- * FACTORY BACK-UP CAMERA
- * U-CONNECT

- * SMITTYBILT STRYKER JL FRONT BUMPER WITH LED FOGLIGHTS
- * FRONT D-RINGS & ISOLATORS (ORANGE)
- * SMITTYBILT NEW GEN II "X20" 10,000 LB WATERPROOF AND WIRELESS CONTROL WINCH WITH SYNTHETIC ROPE
- * FACTORY 55 PROLINK (BLACK)
- * FACTORY LED HEADLIGHTS
- * RUGGED RIDGE BLACK HEADLIGHT GUARDS
- * FACTORY MESH GRILLE PAINTED BLACK
- * MOPAR 10TH ANNIVERSARY RUBICON POWER DOME HOOD (PAINTED TO MATCH)

- * RUBICON EXPRESS 2.5" LIFT KIT WITH FOX PERFORMANCE SHOCKS

- * FOX PERFORMANCE SHOCK STABILIZER KIT
- * MOPAR AUXILIARY SWITCH BANK KIT
- * 50" LED LIGHT BAR AND 4 RIGID INDUSTRIES DUALY D2 LED PILLAR LIGHTS (LIGHT BRACKETS PAINTED TO MATCH)
- * SMITTYBILT BLACK TUBULAR STEPS
- * SMITTYBILT SPARE TIRE ADAPTOR
- * RUGGED RIDGE LED THIRD BRAKE LIGHT RING
- * SMITTYBILT XRC GEN 2 REAR BUMPER WITH REAR PARK DISTANCE SENSORS & 2 LED LIGHTS
- * REAR D-RINGS & ISOLATORS (ORANGE)
- * MAGNAFLOW BLACK SERIES EXHAUST SYSTEM
- * MOPAR ALL WEATHER FLOOR MATS
- * SUPERCHIPS FLASHCAL PROGRAMMER
- * 20" MOTO METAL GLOSS BLACK & CHROME "MO202" WHEELS
- * BRAND NEW NITTO RIDGE GRAPPLER 37X13.50R/20 TIRES

WE BUILD EVERY JEEP WITH PRIDE! DO NOT HESITATE TO CALL US WITH THIS JEEP BUILD. WE CAN MAKE CHANGES TO THIS JEEP BUILD OR CUSTOM BUILD ANY JEEP TO YOUR PREFERENCE. GIVE US A CALL @ 972-242-5350 OR STOP BY FOR A TEST DRIVE. 1724 LUNA RD IN CARROLLTON - 2 MILES NORTH OF 635.

Our Location :



2018 Jeep Wrangler JL Unlimited Sahara 4X4 LIFTED,LED'S,NAV,HTD LTH,20'S!
Texas Vehicle Exchange - 972-242-5350 - View this car on our website at veauto.com/6596397/ebrochure

Installed Options

Interior

- 2 12V DC Power Outlets- 2 12V DC Power Outlets and 1 AC Power Outlet
- 2 Seatback Storage Pockets
- 4-Way Passenger Seat -inc: Manual Recline and Fore/Aft Movement
- 6-Way Driver Seat -inc: Manual Recline, Height Adjustment, Fore/Aft Movement and Manual Lumbar Support
- 60-40 Folding Split-Bench Front Facing Fold Forward Seatback Cloth Rear Seat
- Air Filtration- Analog Display- Cargo Space Lights
- Carpet Floor Trim, Carpet And Rubber Mat- Cloth Low-Back Bucket Seats- Compass
- Cruise Control w/Steering Wheel Controls- Day-Night Rearview Mirror
- Delayed Accessory Power
- Driver And Passenger Visor Vanity Mirrors w/Driver And Passenger Illumination
- Fade-To-Off Interior Lighting- Front And Rear Map Lights
- Front Center Armrest w/Storage
- Front Seats w/Cloth Back Material and Manual Driver Lumbar
- Full Carpet Floor Covering -inc: Carpet Front And Rear Floor Mats
- Full Floor Console w/Locking Storage, 2 12V DC Power Outlets and 1 AC Power Outlet
- Garage Door Transmitter
- Gauges -inc: Speedometer, Odometer, Voltmeter, Oil Pressure, Engine Coolant Temp, Tachometer, Engine Hour Meter, Trip Odometer and Trip Computer
- HVAC -inc: Console Ducts- Illuminated Front Cupholder- Illuminated Rear Cupholder
- Instrument Panel Bin, Dashboard Storage, Driver / Passenger And Rear Door Bins
- Interior Trim -inc: Metal-Look Instrument Panel Insert, Metal-Look Door Panel Insert, Metal-Look Console Insert and Metal-Look Interior Accents
- Leather Steering Wheel- Locking Cargo Area Concealed Storage- Locking Glove Box
- Manual Adjustable Front Head Restraints and Foldable Rear Head Restraints
- Manual Tilt/Telescoping Steering Column- Outside Temp Gauge- Perimeter Alarm
- Power 1st Row Windows w/Driver And Passenger 1-Touch Down
- Power Door Locks w/Autolock Feature
- Power Rear Windows and Removable 3rd Row Windows

- Proximity Key For Push Button Start Only - Redundant Digital Speedometer
- Remote Keyless Entry w/Integrated Key Transmitter, Illuminated Entry and Panic Button
- Sentry Key Engine Immobilizer- Smart Device Integration- Systems Monitor
- Trip Computer- Urethane Gear Shift Knob
- Voice Activated Dual Zone Front Automatic Air Conditioning

Exterior

- Aluminum Spare Wheel- Black Door Handles
- Black Front Bumper w/Metal-Look Rub Strip/Fascia Accent and 2 Tow Hooks
- Black Power Heated Side Mirrors w/Manual Folding- Black Rear Bumper w/1 Tow Hook
- Black Side Windows Trim- Black Wheel Well Trim and Body-Colored Fender Flares
- Body-Colored Grille w/Chrome Accents- Clearcoat Paint
- Conventional Rear Cargo Access- Deep Tinted Glass- Front Fog Lamps
- Full-Size Spare Tire Mounted Outside Rear
- Fully Automatic Aero-Composite Halogen Daytime Running Headlamps w/Delay-Off
- Galvanized Steel/Aluminum/Magnesium Panels
- Manual Convertible Top w/Fixed Roll-Over Protection
- Non-Lock Fuel Cap w/o Discriminator- Removable Rear Window- Side Steps
- Tailgate/Rear Door Lock Included w/Power Door Locks- Tires: 255/70R18 All Season
- Variable Intermittent Wipers- Wheels: 18" x 7.5" Polished w/Gray Spokes

Safety

- 2 12V DC Power Outlets- 2 12V DC Power Outlets and 1 AC Power Outlet
- 2 Seatback Storage Pockets
- 4-Way Passenger Seat -inc: Manual Recline and Fore/Aft Movement
- 6-Way Driver Seat -inc: Manual Recline, Height Adjustment, Fore/Aft Movement and Manual Lumbar Support
- 60-40 Folding Split-Bench Front Facing Fold Forward Seatback Cloth Rear Seat
- Air Filtration- Analog Display- Cargo Space Lights
- Carpet Floor Trim, Carpet And Rubber Mat- Cloth Low-Back Bucket Seats- Compass
- Cruise Control w/Steering Wheel Controls- Day-Night Rearview Mirror
- Delayed Accessory Power
- Driver And Passenger Visor Vanity Mirrors w/Driver And Passenger Illumination
- Fade-To-Off Interior Lighting- Front And Rear Map Lights
- Front Center Armrest w/Storage
- Front Seats w/Cloth Back Material and Manual Driver Lumbar
- Full Carpet Floor Covering -inc: Carpet Front And Rear Floor Mats
- Full Floor Console w/Locking Storage, 2 12V DC Power Outlets and 1 AC Power Outlet
- Garage Door Transmitter
- Gauges -inc: Speedometer, Odometer, Voltmeter, Oil Pressure, Engine Coolant Temp, Tachometer, Engine Hour Meter, Trip Odometer and Trip Computer
- HVAC -inc: Console Ducts- Illuminated Front Cupholder- Illuminated Rear Cupholder
- Instrument Panel Bin, Dashboard Storage, Driver / Passenger And Rear Door Bins
- Interior Trim -inc: Metal-Look Instrument Panel Insert, Metal-Look Door Panel Insert, Metal-Look Console Insert and Metal-Look Interior Accents
- Leather Steering Wheel- Locking Cargo Area Concealed Storage- Locking Glove Box
- Manual Adjustable Front Head Restraints and Foldable Rear Head Restraints
- Manual Tilt/Telescoping Steering Column- Outside Temp Gauge- Perimeter Alarm
- Power 1st Row Windows w/Driver And Passenger 1-Touch Down
- Power Door Locks w/Autolock Feature
- Power Rear Windows and Removable 3rd Row Windows
- Proximity Key For Push Button Start Only - Redundant Digital Speedometer
- Remote Keyless Entry w/Integrated Key Transmitter, Illuminated Entry and Panic Button
- Sentry Key Engine Immobilizer- Smart Device Integration- Systems Monitor
- Trip Computer- Urethane Gear Shift Knob
- Voice Activated Dual Zone Front Automatic Air Conditioning

Mechanical

- 21.5 Gal. Fuel Tank- 220 Amp Alternator- 3 Skid Plates- 3.45 Rear Axle Ratio
- 4-Wheel Disc Brakes w/4-Wheel ABS, Front Vented Discs, Brake Assist and Hill Hold Control
- 50 State Emissions- 650CCA Maintenance-Free Battery w/Run Down Protection
- 880# Maximum Payload- Auto Locking Hubs- Brake Actuated Limited Slip Differential
- Electro-Hydraulic Power Assist Steering- Engine Auto Stop-Start Feature
- Engine Oil Cooler- Engine: 3.6L V6 24V VVT UPG I w/ESS
- Front And Rear Anti-Roll Bars- GVWR: 5,500 lbs- Heavy Duty Suspension w/Gas Shocks
- Leading Link Front Suspension w/Coil Springs- Manual Transfer Case
- Part-Time Four-Wheel Drive- Single Stainless Steel Exhaust
- Towing Equipment -inc: Trailer Sway Control
- Trailing Arm Rear Suspension w/Coil Springs- Transmission: 6-Speed Manual

Option Packages

Factory Installed Packages

ENGINE: 3.6L V6 24V VVT UPG 1 W/ESS

TRANSMISSION: 8-SPEED AUTOMATIC (850RE)

-inc: Dana M200 Rear Axle, Hill Descent Control, Tip Start \$2,000

2.72:1 SELEC-TRAC FULL TIME 4WD SYSTEM

\$595

ANTI-SPIN DIFFERENTIAL REAR AXLE

-inc: Tires: 255/70R18 All Terrain \$595

BODY COLOR 3-PIECE HARD TOP

-inc: Rear Window Defroster, Freedom Panel Storage Bag, Rear Window Wiper/Washer \$2,195

ELECTRONIC INFOTAINMENT SYSTEM GROUP

-inc: SiriusXM Travel Link, 5-Year SiriusXM Travel Link Service, 5-Year SiriusXM Traffic Service, 1-Year SiriusXM Guardian Trial, HD Radio, SiriusXM Traffic Plus, Radio: Uconnect 4C Nav w/8.4" Display, Alpine Premium Audio System, GPS Navigation, Rear View Auto Dim Mirror, 8.4" Touchscreen Display, Roadside Assistance & 9-1-1 Call \$1,595

LED LIGHTING GROUP

-inc: LED Taillamps, Front LED Fog Lamps, LED Reflector Headlamps, Daytime Running Lamps LED Accents \$995

MOPAR ALL-WEATHER FLOOR MATS

\$150

SAFETY GROUP

-inc: Blind Spot & Cross Path Detection, ParkSense Rear Park Assist System \$995

TRAILER TOW & HD ELECTRICAL GROUP

-inc: Class II Receiver Hitch, 240 Amp Alternator, 7 & 4 Pin Wiring Harness, 700 Amp Maintenance Free Battery, Auxiliary Switches \$795


QUICK ORDER PACKAGE 24G

-inc: Engine: 3.6L V6 24V VVT UPG 1 w/ESS, Transmission: 8-Speed Automatic (850RE)

PUNKN METALLIC CLEARCOAT

Option Packages Total

\$9,915



Texas Vehicle Exchange

tveauto.com

972-242-5350

1724 Luna Road

Carrollton, TX 75006

© 2019 AutoRevo - All rights reserved. - Powered by [AutoRevo](#)