

# 2017 Ford Focus RS AWD ROOF,NAV,BACK-UP CAM,RECARO,10K,WE FINANCE

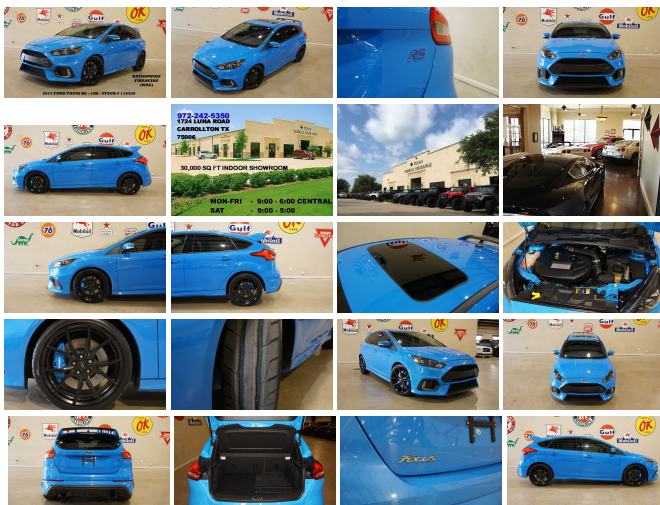
View this car on our website at [tveauto.com/6596189/ebrochure](http://tveauto.com/6596189/ebrochure)



Our Price **\$32,900**

## Specifications:

Year:	2017
VIN:	WF0DP3TH1H4118320
Make:	Ford
Stock:	118320
Model/Trim:	Focus RS AWD ROOF,NAV,BACK-UP CAM,RECARO,10K,WE FINANCE
Condition:	Pre-Owned
Body:	Sedan
Exterior:	Nitrous Blue Quad-Coat
Engine:	ENGINE: 2.3L GTDI
Interior:	Charcoal Black Leather/Cloth
Transmission:	TRANSMISSION: 6-SPEED MANUAL
Mileage:	10,687
Drivetrain:	All Wheel Drive
Economy:	City 19 / Highway 25



NATION WIDE FINANCING

SUBMIT CREDIT APP [WWW.TVEAUTO.COM](http://WWW.TVEAUTO.COM)

OR CALL 972-242-5350

2017 FORD FOCUS RS AWD, 2.3L  
TURBOCHARGED I4 ENGINE, 6 SPEED  
MANUAL TRANSMISSION, ONLY 10K,  
NITROUS BLUE QUAD-COAT W/BLACK  
LEATHER & CLOTH INTERIOR, CARFAX  
REPORTS 1 OWNER NO ACCIDENTS,  
APPEARS TO BE A NON-SMOKER, PUSH  
BUTTON START, FOGLIGHTS, SUNROOF,  
NAVIGATION, BACK-UP CAMERA, POWER  
WINDOWS, POWER DOOR LOCKS, POWER  
HEATED MIRRORS WITH TURN SIGNALS,  
HEATED TILT/TELESCOPE STEERING  
WHEEL WITH AUDIO & CRUISE CONTROLS

WHEEL WITH AUDIO & CRUISE CONTROLS, DRIVER RECARO POWER & HEATED SEAT, PASSENGER RECARO HEATED SEAT WITH MANUAL ADJUSTMENTS, TRACTION CONTROL, DRIVE MODE CONTROL, ICE COLD A/C, DUAL CLIMATE CONTROL, SONY HD AM/FM/SIRIUS STEREO WITH CD PLAYER, MICROSOFT SYNC VOICE ACTIVATED SYSTEM, DUAL LIGHTED VANITY MIRRORS, CARGO COVER, REAR SPOILER, FLOOR MATS, NO OWNER'S MANUAL, 1 KEY/1 REMOTE. 19 IN BLACK ALLOY WHEELS, BREMBO BRAKES, FRONT TIRES ARE BRAND NEW NITTO 235/35ZR/19, REAR TIRES ARE BRAND NEW NITTO 235/35ZR/19. RUNS AND DRIVES GREAT. GIVE US A CALL @ 972-242-5350 OR STOP BY FOR A TEST DRIVE. 1724 LUNA RD IN CARROLLTON - 2 MILES NORTH OF 635. CLICK ON CARFAX ICON TO VIEW A FULL REPORT AT NO COST TO YOU.

2017 Ford Focus RS AWD ROOF,NAV,BACK-UP CAM,RECARO,10K,WE FINANCE

Texas Vehicle Exchange - 972-242-5350 - View this car on our website at [veauto.com/6596189/ebrochure](http://veauto.com/6596189/ebrochure)

#### Our Location :



## Installed Options

### Interior

- 1 Seatback Storage Pocket- 2 12V DC Power Outlets- 4-Way Passenger Seat
- 6-Way Driver Seat
- 60-40 Folding Bench Front Facing Flip Forward Cushion/Seatback Rear Seat
- Air Filtration- Analog Display- Cargo Area Concealed Storage
- Cargo Features -inc: Spare Tire Mobility Kit- Cargo Space Lights- Carpet Floor Trim
- Cloth Door Trim Insert- Compass- Cruise Control w/Steering Wheel Controls
- Day-Night Rearview Mirror- Delayed Accessory Power
- Driver And Passenger Visor Vanity Mirrors w/Driver And Passenger Illumination
- Driver Foot Rest- Dual Zone Front Automatic Air Conditioning
- FOB Controls -inc: Trunk/Hatch/Tailgate- Fade-To-Off Interior Lighting
- Front And Rear Map Lights- Front Center Armrest- Front Cupholder
- Full Carpet Floor Covering -inc: Carpet Front And Rear Floor Mats - Full Cloth Headliner
- Full Floor Console w/Covered Storage and 2 12V DC Power Outlets
- Gauges -inc: Speedometer, Odometer, Oil Pressure, Engine Coolant Temp, Tachometer, Turbo/Supercharger Boost, Oil Temperature, Trip Odometer and Trip Computer
- Glove Box- HVAC -inc: Underseat Ducts
- Instrument Panel Bin, Driver / Passenger And Rear Door Bins
- Interior Trim -inc: Chrome Interior Accents - Leather Steering Wheel
- Leather/Aluminum Gear Shift Knob- Manual Adjustable Rear Head Restraints
- Manual Tilt/Telescoping Steering Column- Outside Temp Gauge
- Partial Leather Recaro Seats -inc: 6-way manual driver seat (up/down, fore/aft, recline), 4-way manual passenger seat (fore/aft, recline), 4-way head restraints and RS logo
- Perimeter Alarm- Power 1st Row Windows w/Front And Rear 1-Touch Up/Down
- Power Door Locks w/Autolock Feature- Power Rear Windows
- Proximity Key For Doors And Push Button Start - Rear Cupholder
- Remote Keyless Entry w/Integrated Key Transmitter, Illuminated Entry and Panic Button
- Rigid Cargo Cover
- SYNC 3 Communications & Entertainment System -inc: enhanced voice recognition, 8" center LCD touch screen w/swiping and pinch-to-zoom capabilities, AppLink, 911 Assist, 2 smart charging USB ports, VHR, SYNC Services, Bluetooth, steering wheel controls, and auxiliary input jack
- Seats w/Cloth Back Material- Securilock Anti-Theft Ignition (pats) Engine Immobilizer
- Systems Monitor- Trip Computer

### Exterior

- Black Grille- Black Side Windows Trim and Black Front Windshield Trim
- Body-Colored Door Handles- Body-Colored Front Bumper
- Body-Colored Power Side Mirrors w/Convex Spotter, Manual Folding and Turn Signal Indicator
- Body-Colored Rear Bumper w/Black Rub Strip/Fascia Accent- Clearcoat Paint
- Cornering Lights
- Fixed Rear Window w/Fixed Interval Wiper, Heated Wiper Park and Defroster
- Front Fog Lamps
- Fully Automatic Projector Beam High Intensity Low Beam Daytime Running Auto-Leveling Directionally Adaptive Headlamps w/Delay-Off
- Fully Galvanized Steel Panels- Liftgate Rear Cargo Access- Light Tinted Glass
- Perimeter/Approach Lights- Rocker Panel Extensions- Spare Tire Mobility Kit
- Tailgate/Rear Door Lock Included w/Power Door Locks
- Tires: 19" Michelin Super Sport Summer- Variable Intermittent Wipers
- Wheels: 19" Premium Painted Alloy- Wing Spoiler

### Safety

- 1 Seatback Storage Pocket- 2 12V DC Power Outlets- 4-Way Passenger Seat
- 6-Way Driver Seat
- 60-40 Folding Bench Front Facing Flip Forward Cushion/Seatback Rear Seat
- Air Filtration- Analog Display- Cargo Area Concealed Storage
- Cargo Features -inc: Spare Tire Mobility Kit- Cargo Space Lights- Carpet Floor Trim
- Cloth Door Trim Insert- Compass- Cruise Control w/Steering Wheel Controls
- Day-Night Rearview Mirror- Delayed Accessory Power
- Driver And Passenger Visor Vanity Mirrors w/Driver And Passenger Illumination
- Driver Foot Rest- Dual Zone Front Automatic Air Conditioning
- FOB Controls -inc: Trunk/Hatch/Tailgate- Fade-To-Off Interior Lighting

- Front And Rear Map Lights- Front Center Armrest- Front Cupholder
- Full Carpet Floor Covering -inc: Carpet Front And Rear Floor Mats - Full Cloth Headliner
- Full Floor Console w/Covered Storage and 2 12V DC Power Outlets
- Gauges -inc: Speedometer, Odometer, Oil Pressure, Engine Coolant Temp, Tachometer, Turbo/Supercharger Boost, Oil Temperature, Trip Odometer and Trip Computer
- Glove Box- HVAC -inc: Underseat Ducts
- Instrument Panel Bin, Driver / Passenger And Rear Door Bins
- Interior Trim -inc: Chrome Interior Accents - Leather Steering Wheel
- Leather/Aluminum Gear Shift Knob- Manual Adjustable Rear Head Restraints
- Manual Tilt/Telescoping Steering Column- Outside Temp Gauge
- Partial Leather Recaro Seats -inc: 6-way manual driver seat (up/down, fore/aft, recline), 4-way manual passenger seat (fore/aft, recline), 4-way head restraints and RS logo
- Perimeter Alarm- Power 1st Row Windows w/Front And Rear 1-Touch Up/Down
- Power Door Locks w/Autolock Feature- Power Rear Windows
- Proximity Key For Doors And Push Button Start - Rear Cupholder
- Remote Keyless Entry w/Integrated Key Transmitter, Illuminated Entry and Panic Button
- Rigid Cargo Cover
- SYNC 3 Communications & Entertainment System -inc: enhanced voice recognition, 8" center LCD touch screen w/swiping and pinch-to-zoom capabilities, AppLink, 911 Assist, 2 smart charging USB ports, VHR, SYNC Services, Bluetooth, steering wheel controls, and auxiliary input jack
- Seats w/Cloth Back Material- Securilock Anti-Theft Ignition (pats) Engine Immobilizer
- Systems Monitor- Trip Computer

## Mechanical

- 13.9 Gal. Fuel Tank
- 4-Wheel Disc Brakes w/4-Wheel ABS, Front Vented Discs, Brake Assist and Hill Hold Control
- 4.06 Axle Ratio- 590CCA Maintenance-Free Battery w/Run Down Protection
- Automatic Full-Time All-Wheel Drive- Brake Actuated Limited Slip Differential
- Driver Control Ride Control Sport Tuned Suspension- Electric Power-Assist Steering
- Engine Auto Stop-Start Feature- Engine: 2.3L GTDI -inc: auto start-stop technology
- Front And Rear Anti-Roll Bars- Gas-Pressurized Shock Absorbers
- Quasi-Dual Stainless Steel Exhaust w/Polished Tailpipe Finisher
- Short And Long Arm Rear Suspension w/Coil Springs
- Strut Front Suspension w/Coil Springs- Transmission w/Driver Selectable Mode
- Transmission: 6-Speed Manual

## Option Packages

### Factory Installed Packages

#### ENGINE: 2.3L GTDI

-inc: auto start-stop technology

#### TRANSMISSION: 6-SPEED MANUAL

#### POWER MOONROOF

\$895

#### RS2

\$2,785

-inc: Heated Mirrors, Heated Front-Seats, SiriusXM Traffic & Travel Link, 5-year prepaid subscription. Not Available In AK/HI. SiriusXM audio and data services each require a subscription sold separately, or as a package, by SiriusXM Radio Inc. If you decide to continue service after your trial, the subscription plan you choose will automatically renew thereafter and you will be charged according to your chosen payment method at then-current rates. Fees and taxes apply. To cancel you must call SiriusXM at 1-866-6352349. See SiriusXM customer agreement for complete terms at [www.siriusxm.com](http://www.siriusxm.com). All fees and programming subject to change. Sirius, XM and all related marks and logos are trademarks of SiriusXM Radio

Inc. Heated 3 Point Steering  
Wheel, Voice-Activated Touch-  
Screen Navigation System

-  
NITROUS BLUE QUAD-COAT  
\$695

-  
CHARCOAL BLACK, LEATHER RECARO  
SEATS W/MIKO DINAMICA INSERTS

-inc: 8-way power driver seat  
(up/down, fore/aft, tilt/recline  
and power lumbar), 4-way  
manual passenger seat  
(fore/aft, recline), 4-way head  
restraints and RS logo

-  
Option Packages Total  
\$4,375

---

Texas Vehicle Exchange

[tveauto.com](http://tveauto.com)

972-242-5350

1724 Luna Road

Carrollton, TX 75006

© 2019 AutoRevo - All rights reserved. - Powered by AutoRevo