

2011 Toyota Tundra Grade

View this car on our website at texasautovalue.com/6594538/ebrochure



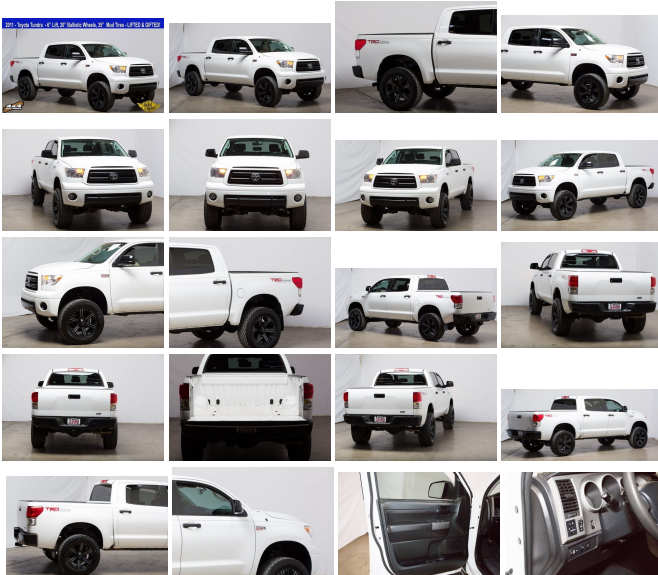
Our Price **\$23,491**

Specifications:

Year: 2011
VIN: 5TFDW5F1XBX209074
Make: Toyota
Stock: 209074
Model/Trim: Tundra Grade
Condition: Pre-Owned
Body: Pickup Truck
Exterior: Super White
Engine: i-Force 5.7L V8 DOHC FFV
Interior: Graphite Cloth
Transmission: 6-Speed Automatic Electronic
Mileage: 93,015
Drivetrain: 4 Wheel Drive
Economy: City 13 / Highway 17

2011 Toyota Tundra CrewMax

Offered by: *Texas Auto Value* - 469-547-1642



VIN: 5TFDW5F1XBX209074
Year: 2011
Make: Toyota
Model: Tundra
Trim: Grade
Stock #: 209074
Condition: Pre-Owned
Mileage: 93015
MPG: 17 Hwy / 13 City
Exterior Color: White
Interior: Other Cloth
Body: Pickup Truck
Cab Style: Transmission: Automatic
Engine: 5.7L FFV DOHC 32-valve i-Force V8 engine -inc: dual independent variable valve timing w/intelligence, acoustically controlled induction

Texas Auto Value - texasautovalue.com

- Qualifies for CarFax Buyback Guarantee
- CarFax reports No Accidents!
- CarFax reports No Damage!

Description (for 2011 Toyota_ Tundra_) "2011 Toyota Tundra CrewMax Super White6"" Lift, 20"" Ballistic Wheels Black, 35"" Mud Tires, i-Force 5.7L V8 DOHC, 4WD, Graphite w/Fabric Seat Trim or Fabric Seat Trim w/Off-Road Package or Fabric Seat Trim w/SR5 Package, 130A Alternator, 17"" TRD Forged Alloy Wheels, 4.30 Rear Differential, Bilstein Shocks, Center Console, Clear Front Fog & Driving Lamps, Cold Weather Package, Color Keyed Front Bumper, Fabric Seat Trim w/Rock Warrior Special Edition, Front & Rear Mud Guards, Front Bucket Seats, a Heavy Duty Battery for those cold mornings, Heavy-Duty Starter, Power Heated Outside Mirror w/Remote, Radio: AM/FM Audio w/CD/MP3/WMA Playback, Rock Warrior Special Edition Package, Supplemental Transmission Cooler, Tilt/Telescoping Steering Wheel, Tow Package, TRD Rock Warrior Graphics.Texas Auto Value your home for the best Lifted & Gifted inventory in Texas! Don't buy stock when you can get Lifted & Gifted!A clear and simple car buying experience, No Haggle Pricing."

Included Features (for 2011 Toyota_ Tundra_)

INTERIOR

- (4) front & (2) rear cup holders
- 2-way adjustable headrests
- 8-way adjustable driver & 4-way front passenger seats
- Carpet flooring
- Cruise control
- Dual zone air conditioning w/sync mode
- Front & rear map lamps
- Instrumentation -inc: tachometer, tripmeter, exterior temp gauge, digital clock
- Pwr windows
- Rear glass defroster
- Rear sliding & reclining fold-flat seats

EXTERIOR

- 18" spare wheel & full-size tire
- Chrome grille surround
- Chrome rear bumper
- Color-keyed upper & chrome lower front bumper
- Deck rail & tailgate caps
- High solar energy-absorbing glass
- Manual headlamp adjust
- P255/70R18 tires
- Pwr sliding rear privacy glass
- Tailgate assist
- Variable intermittent windshield wipers

SAFETY

- 3-point seatbelts in all seating positions w/automatic & emergency locking retractors, driver & front passenger pretensioners w/force limiters, driver emergency locking retractor
- 4-wheel anti-lock brakes w/brake assist
- Child restraint system top tether anchors for rear center seat
- Child-protector rear door locks
- Driver & front passenger advanced airbags
- Driver & front passenger knee airbags
- Driver & front passenger seat mounted side airbags
- Electronic brake-force distribution
- Front & rear roll-sensing side curtain airbags
- Rear outboard seat LATCH anchors
- Tire pressure monitor system

MECHANICAL

- 4WDemand 4-wheel drive system w/electronically controlled 2-speed transfer case
- 5.7L FFV DOHC 32-valve i-Force V8 engine -inc: dual independent variable valve timing w/intelligence, acoustically controlled induction
- 6-speed automatic transmission -inc: electronically controlled intelligence (ECT-i), sequential shift mode, uphill & downhill shift logic
- Automatic limited-slip differential
- Front tow hooks
- Hydraulic pwr rack & pinion steering
- Independent coil-spring high-mounted double wishbone front suspension w/low-pressure nitrogen gas shocks, stabilizer bar
- Pwr vented disc brakes
- Trailer sway control
- Trapezoidal multi-leaf live axle rear suspension w/staggered low-pressure nitrogen gas shocks

Toyota_ Tundra_

2011 Toyota Tundra Grade* Toyota* Tundra* Grade* 5.7L FFV DOHC 32-valve i-Force V8 engine -inc: dual independent variable valve timing w/intelligence, acoustically controlled induction* 93015 * Automatic * Toyota Tundra* 2011 * Other * White * Pickup Truck* Tundra Grade* 2011 Toyota * * Gasoline * Addison* Addison, TX* 2011 Toyota Tundra




2011 Toyota Tundra Grade

Texas Auto Value - 4695471642 - View this car on our website at texasautovalue.com/6594538/ebrochure

Vehicle History Report : as Of 04/21/2019

 Snapshot

2011 TOYOTA TUNDRA CREWMAX SR5

	No accidents reported to CARFAX
	No damage reported to CARFAX
	3 Previous owners
	32 Service history records
	Personal vehicle
	88,813 Last reported odometer reading



FREE CARFAX Report

See the full CARFAX Report for additional information

*carfax Snapshot is a reflection of available information on the date the report was pulled. carfax is constantly being updated with new information and is subject to change at any time.

Our Location :



2011 Toyota Tundra Grade

Texas Auto Value - 4695471642 - View this car on our website at texasautovalue.com/6594538/ebrochure

Installed Options

Interior

- 40/20/40 split-&-fold bench seat- 8-way adjustable driver & 4-way front passenger seats
- Fabric seat trim- Rear sliding & reclining fold-flat seats- 2-way adjustable headrests
- Carpet flooring- Tilt steering wheel w/column shifter
- Instrumentation -inc: tachometer, tripmeter, exterior temp gauge, digital clock
- Pwr windows- Pwr door locks- Remote keyless entry system- Cruise control
- Dual zone air conditioning w/sync mode- Rear glass defroster
- (4) front & (2) rear cup holders - (2) front pwr points & (1) rear pwr point
- Front & rear map lamps

Exterior

- 18" steel wheels- P255/70R18 tires- 18" spare wheel & full-size tire
- Color-keyed upper & chrome lower front bumper- Chrome rear bumper
- Chrome grille surround- Manual headlamp adjust- Pwr mirrors
- Pwr sliding rear privacy glass- High solar energy-absorbing glass
- Variable intermittent windshield wipers- Tailgate assist- Deck rail & tailgate caps

Safety

- 40/20/40 split-&-fold bench seat- 8-way adjustable driver & 4-way front passenger seats
- Fabric seat trim- Rear sliding & reclining fold-flat seats- 2-way adjustable headrests
- Carpet flooring- Tilt steering wheel w/column shifter
- Instrumentation -inc: tachometer, tripmeter, exterior temp gauge, digital clock
- Pwr windows- Pwr door locks- Remote keyless entry system- Cruise control
- Dual zone air conditioning w/sync mode- Rear glass defroster
- (4) front & (2) rear cup holders - (2) front pwr points & (1) rear pwr point
- Front & rear map lamps

Mechanical

- 5.7L FFV DOHC 32-valve i-Force V8 engine -inc: dual independent variable valve timing w/intelligence, acoustically controlled induction
- 6-speed automatic transmission -inc: electronically controlled intelligence (ECT-i), sequential shift mode, uphill & downhill shift logic
- Automatic limited-slip differential
- 4WDemand 4-wheel drive system w/electronically controlled 2-speed transfer case
- Front tow hooks- Trailer sway control
- Independent coil-spring high-mounted double wishbone front suspension w/low-pressure nitrogen gas shocks, stabilizer bar
- Trapezoidal multi-leaf live axle rear suspension w/staggered low-pressure nitrogen gas shocks
- Hydraulic pwr rack & pinion steering- Pwr vented disc brakes



texasautovalue.com

4695471642

4112 Billy Mitchell Dr.

Addison, TX 75001

© 2019 AutoRevo - All rights reserved. - Powered by AutoRevo