

2017 Ford Super Duty F-250 SRW Lariat

View this car on our website at texasautovalue.com/6593941/ebrochure

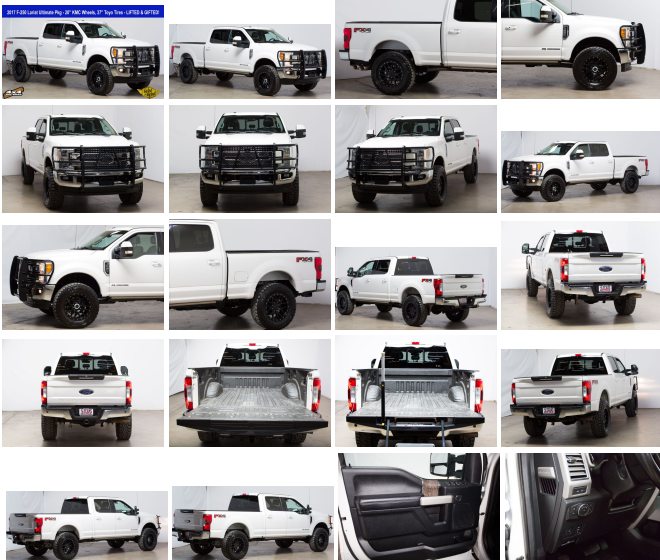
2017 F-250 Lariat Ultimate Pkg - 20" KMC Wheels, 37" Toyo Tires - LIFTED & GIFTED!



Our Price **\$51,990**

Specifications:

Year:	2017
VIN:	1FT7W2BT5HEC42037
Make:	Ford
Stock:	C42037
Model/Trim:	Super Duty F-250 SRW Lariat
Condition:	Pre-Owned
Body:	Pickup Truck
Exterior:	White Platinum Metallic Tri-Coat
Engine:	Power Stroke 6.7L V8 DI 32V OHV Turbodiesel
Interior:	Black Leather
Transmission:	TorqShift 6-Speed Automatic
Mileage:	67,703
Drivetrain:	4 Wheel Drive



2017 Ford Super Duty F-250 SRW Lariat Ultimate

Offered by: *Texas Auto Value* - \$51,990.00
469-547-1642

VIN: 1FT7W2BT5HEC42037
Year: 2017
Make: Ford
Model: Super Duty F-250 SRW
Trim: Lariat Ultimate Package
Stock #: C42037
Condition: Pre-Owned
Mileage: 67703
Exterior Color: White
Interior: Other Leather
Body: Pickup truck
Transmission: Automatic
Engine: ENGINE: 6.7L 4V OHV POWER STROKE V8 TURBO DIESEL B20

Texas Auto Value - texasautovalue.com

- Qualifies for CarFax Buyback Guarantee

- CarFax reports No Accidents!
- CarFax reports No Damage!

Description (for 2017 Ford_ Super Duty F-250 SRW_)

2017 Ford F-250SD Lariat White Platinum Metallic Tri-Coat 4WD, Ambient Lighting, Automatic High Beam, BLIS Blind Spot Information System, Easy Entry/Exit Memory Driver's Seat Feature, GVWR: 10,000 lb Payload Package, Intelligent Access w/Push-Button Start, Lariat Ultimate Package, LED Box Lighting, Memory Power-Adjustable Pedals, Order Code 608A, Power Heated/Cooled Driver Seat w/Memory, Power Heated/Cooled Passenger Seat, Power Telescoping/Tilt Steering Wheel/Column, Power-Deployable Running Boards, PowerScope Trailer Tow Mirrors w/Memory, Rear CHMSL Camera, Remote Start System, Remote Tailgate Release, Tailgate Step & Handle, Twin Panel Power Moonroof, Upfitter Switches (6), Voice-Activated Navigation, Wheels: 20" Bright Machined Cast Aluminum.

Texas Auto Value your home for the best Lifted & Gifted inventory in Texas!

A clear and simple car buying experience, No Haggle Pricing.

Added Options (for 2017 Ford_ Super Duty F-250 SRW_)

ENGINE: 6.7L 4V OHV POWER STROKE V8 TURBO DIESEL B20
Includes: 4 valve ohv, manual push-button engine-exhaust braking and intelligent oil-life monitor, extra heavy-duty 220 amp alternator, 3.31 axle ratio, dual 78-ah 750 cca batteries, 48 gallon fuel tank
Sticker Cost: \$8,795.00

Included Features (for 2017 Ford_ Super Duty F-250 SRW_)

INTERIOR

- 110V/400W Outlet -inc: 1 in-dash mounted outlet
- 2 Seatback Storage Pockets
- Air Filtration
- Day-Night Auto-Dimming Rearview Mirror
- Delayed Accessory Power
- Fade-To-Off Interior Lighting
- Flow-Through Console -inc: 110V/400W outlet in rear
- Front And Rear Map Lights
- Front Cupholder
- Front Facing Fold-Up Cushion Rear Seat
- Full Cloth Headliner
- Full Overhead Console w/Storage
- HVAC -inc: Underseat Ducts and Console Ducts
- Illuminated Locking Glove Box
- Instrument Panel Bin, Covered Dashboard Storage, Driver / Passenger And Rear Door Bins and Locking 2nd Row Underseat Storage
- Interior Trim -inc: Metal-Look Instrument Panel Insert, Simulated Wood/Metal-Look Door Panel Insert, Simulated Wood/Leather Console Insert and Chrome/Metal-Look Interior Accents
- Keypad
- Leather Steering Wheel
- Manual Adjustable Rear Head Restraints
- Outside Temp Gauge
- Perimeter Alarm
- Rear Center Armrest
- Rear Cupholder
- Securilock Anti-Theft Ignition (pats) Engine Immobilizer
- Systems Monitor

- Underhood And Pickup Cargo Box Lights
- Urethane Gear Shift Knob
- Voice Activated Dual Zone Front Automatic Air Conditioning

MECHANICAL

- 3.73 Axle Ratio
- 3230# Maximum Payload
- 4-Wheel Disc Brakes w/4-Wheel ABS, Front And Rear Vented Discs, Brake Assist and Hill Hold Control
- 48 Gal. Fuel Tank
- 50-State Emissions System
- 78-Amp/Hr 750CCA Maintenance-Free Battery w/Run Down Protection
- Auto Locking Hubs
- Electronic Transfer Case
- Firm Suspension
- Front Anti-Roll Bar
- Front Suspension w/Coil Springs
- GVWR: 10,000 lb Payload Package
- HD Shock Absorbers
- Hydraulic Power-Assist Steering
- Leaf Rear Suspension w/Leaf Springs
- Part-Time Four-Wheel Drive
- Single Stainless Steel Exhaust
- Transmission w/Oil Cooler

EXTERIOR

- Aluminum Panels
- Black Side Windows Trim and Black Front Windshield Trim
- Body-Colored Door Handles
- Cargo Lamp w/High Mount Stop Light
- Chrome Front Bumper w/Body-Colored Rub Strip/Fascia Accent and 2 Tow Hooks
- Chrome Grille
- Chrome Rear Step Bumper
- Clearcoat Paint
- Deep Tinted Glass
- Front License Plate Bracket
- Full-Size Spare Tire Stored Underbody w/Crankdown
- Perimeter/Approach Lights
- Power Extendable Trailer Style Mirrors
- Power Rear Window w/Defroster
- Regular Box Style
- Steel Spare Wheel
- Tailgate Rear Cargo Access

SAFETY

- Dual Stage Driver And Passenger Front Airbags
- Dual Stage Driver And Passenger Seat-Mounted Side Airbags
- Mykey System -inc: Top Speed Limiter, Audio Volume Limiter, Early Low Fuel Warning, Programmable Sound Chimes and Beltminder w/Audio Mute
- Outboard Front Lap And Shoulder Safety Belts -inc: Rear Center 3 Point and Height Adjusters
- Rear Parking Sensors
- Safety Canopy System Curtain 1st And 2nd Row Airbags
- Side Impact Beams
- Tire Specific Low Tire Pressure Warning

ENTERTAINMENT

- Fixed Antenna
- Radio w/Clock and Speed Compensated Volume Control
- Regular Amplifier

Ford_ Super Duty F-250 SRW_

2017 Ford Super Duty F-250 SRW Lariat* Ford* Super Duty F-250 SRW* Lariat* ENGINE: 6.7L 4V OHV POWER STROKE V8 TURBO DIESEL B20* 67703 * Automatic * Ford Super Duty F-250 SRW* 2017 * Other * White * Pickup truck* Super Duty F-250 SRW Lariat* 2017 Ford * Diesel * \$51,990 * Addison* Addison, TX* 2017 Ford Super Duty F-250 SRW

2017 Ford Super Duty F-250 SRW Lariat

Texas Auto Value - 4695471642 - View this car on our website at texasautovalue.com/6593941/ebrochure

Vehicle History Report : as Of 03/20/2019

Snapshot

2017 FORD F250 SUPER DUTY

	No accidents reported to CARFAX
	No damage reported to CARFAX
	At least 1 open recall
	7 Detailed records available
	1,159 Last reported odometer reading



FREE CARFAX Report

See the full CARFAX Report for additional information

*carfax Snapshot is a reflection of available information on the date the report was pulled. carfax is constantly being updated with new information and is subject to change at any time.

Our Location :



2017 Ford Super Duty F-250 SRW Lariat

Texas Auto Value - 4695471642 - View this car on our website at texasautovalue.com/6593941/ebrochure

Installed Options

Interior

- 10-Way Power Driver Seat -inc: Power Recline, Height Adjustment, Fore/Aft Movement, Cushion Tilt and Power 2-Way Lumbar Support
- 10-Way Power Passenger Seat -inc: Power Recline, Height Adjustment, Fore/Aft Movement, Cushion Tilt and Power 2-Way Lumbar Support
- 110V/400W Outlet -inc: 1 in-dash mounted outlet - 2 Seatback Storage Pockets
- Air Filtration- Cruise Control w/Steering Wheel Controls
- Day-Night Auto-Dimming Rearview Mirror- Delayed Accessory Power

- Driver And Passenger Visor Vanity Mirrors w/Driver And Passenger Illumination
- Fade-To-Off Interior Lighting- Flow-Through Console -inc: 110V/400W outlet in rear
- Front And Rear Map Lights- Front Cupholder- Front Facing Fold-Up Cushion Rear Seat
- Front Leather Seating Surfaces 40/Console/40 -inc: 10-way power driver and passenger seating (includes power lumbar), 4-way adjustable driver/passenger headrests, matching 60/40 rear bench w/partitioned locking under-seat storage and 12V powerpoint
- Front Seats w/Power 2-Way Driver Lumbar
- Full Carpet Floor Covering -inc: Carpet Front And Rear Floor Mats - Full Cloth Headliner
- Full Overhead Console w/Storage
- Gauges -inc: Speedometer, Odometer, Oil Pressure, Engine Coolant Temp, Tachometer, Transmission Fluid Temp, Engine Hour Meter, Trip Odometer and Trip Computer
- HVAC -inc: Underseat Ducts and Console Ducts - Illuminated Locking Glove Box
- Instrument Panel Bin, Covered Dashboard Storage, Driver / Passenger And Rear Door Bins and Locking 2nd Row Underseat Storage
- Interior Trim -inc: Metal-Look Instrument Panel Insert, Simulated Wood/Metal-Look Door Panel Insert, Simulated Wood/Leather Console Insert and Chrome/Metal-Look Interior Accents
- Keypad- Leather Steering Wheel- Manual Adjustable Rear Head Restraints
- Manual Tilt/Telescoping Steering Column- Outside Temp Gauge- Perimeter Alarm
- Power 1st Row Windows w/Driver And Passenger 1-Touch Up/Down
- Power Adjustable Pedals- Power Door Locks w/Autolock Feature- Power Rear Windows
- Rear Center Armrest- Rear Cupholder
- Remote Keyless Entry w/Integrated Key Transmitter, Illuminated Entry and Panic Button
- Securilock Anti-Theft Ignition (pats) Engine Immobilizer- Systems Monitor- Trip Computer
- Underhood And Pickup Cargo Box Lights- Urethane Gear Shift Knob
- Voice Activated Dual Zone Front Automatic Air Conditioning

Exterior

- Aluminum Panels
- Black Power Heated Side Mirrors w/Convex Spotter, Power Folding and Turn Signal Indicator
- Black Side Windows Trim and Black Front Windshield Trim - Body-Colored Door Handles
- Cargo Lamp w/High Mount Stop Light
- Chrome Front Bumper w/Body-Colored Rub Strip/Fascia Accent and 2 Tow Hooks
- Chrome Grille- Chrome Rear Step Bumper- Clearcoat Paint- Deep Tinted Glass
- Front Fog Lamps- Front License Plate Bracket
- Full-Size Spare Tire Stored Underbody w/Crankdown
- Fully Automatic Aero-Composite Halogen Daytime Running Lights Preference Setting Headlamps w/Delay-Off
- Perimeter/Approach Lights- Power Extendable Trailer Style Mirrors
- Power Rear Window w/Defroster- Regular Box Style- Steel Spare Wheel
- Tailgate Rear Cargo Access- Tailgate/Rear Door Lock Included w/Power Door Locks
- Tires: LT275/65R18E BSW A/S- Variable Intermittent Wipers
- Wheels: 18" Bright Machined Cast Aluminum -inc: magnetic painted pockets and bright hub covers/center ornaments

Safety

- 10-Way Power Driver Seat -inc: Power Recline, Height Adjustment, Fore/Aft Movement, Cushion Tilt and Power 2-Way Lumbar Support
- 10-Way Power Passenger Seat -inc: Power Recline, Height Adjustment, Fore/Aft Movement, Cushion Tilt and Power 2-Way Lumbar Support
- 110V/400W Outlet -inc: 1 in-dash mounted outlet - 2 Seatback Storage Pockets
- Air Filtration- Cruise Control w/Steering Wheel Controls
- Day-Night Auto-Dimming Rearview Mirror- Delayed Accessory Power
- Driver And Passenger Visor Vanity Mirrors w/Driver And Passenger Illumination
- Fade-To-Off Interior Lighting- Flow-Through Console -inc: 110V/400W outlet in rear
- Front And Rear Map Lights- Front Cupholder- Front Facing Fold-Up Cushion Rear Seat
- Front Leather Seating Surfaces 40/Console/40 -inc: 10-way power driver and passenger seating (includes power lumbar), 4-way adjustable driver/passenger headrests, matching 60/40 rear bench w/partitioned locking under-seat storage and 12V powerpoint
- Front Seats w/Power 2-Way Driver Lumbar
- Full Carpet Floor Covering -inc: Carpet Front And Rear Floor Mats - Full Cloth Headliner
- Full Overhead Console w/Storage
- Gauges -inc: Speedometer, Odometer, Oil Pressure, Engine Coolant Temp, Tachometer, Transmission Fluid Temp, Engine Hour Meter, Trip Odometer and Trip Computer
- HVAC -inc: Underseat Ducts and Console Ducts - Illuminated Locking Glove Box
- Instrument Panel Bin, Covered Dashboard Storage, Driver / Passenger And Rear Door Bins and Locking 2nd Row Underseat Storage
- Interior Trim -inc: Metal-Look Instrument Panel Insert, Simulated Wood/Metal-Look Door Panel Insert, Simulated Wood/Leather Console Insert and Chrome/Metal-Look Interior Accents
- Keypad- Leather Steering Wheel- Manual Adjustable Rear Head Restraints
- Manual Tilt/Telescoping Steering Column- Outside Temp Gauge- Perimeter Alarm
- Power 1st Row Windows w/Driver And Passenger 1-Touch Up/Down

- Power Adjustable Pedals- Power Door Locks w/Autolock Feature- Power Rear Windows
- Rear Center Armrest- Rear Cupholder
- Remote Keyless Entry w/Integrated Key Transmitter, Illuminated Entry and Panic Button
- Securilock Anti-Theft Ignition (pats) Engine Immobilizer- Systems Monitor- Trip Computer
- Underhood And Pickup Cargo Box Lights- Urethane Gear Shift Knob
- Voice Activated Dual Zone Front Automatic Air Conditioning

Mechanical

- 3.73 Axle Ratio- 34 Gal. Fuel Tank- 3450# Maximum Payload
- 4-Wheel Disc Brakes w/4-Wheel ABS, Front And Rear Vented Discs, Brake Assist and Hill Hold Control
- 50-State Emissions System
- 78-Amp/Hr 750CCA Maintenance-Free Battery w/Run Down Protection
- Auto Locking Hubs
- Class V Towing Equipment -inc: Harness, Hitch, Brake Controller and Trailer Sway Control
- Electronic Transfer Case- Engine: 6.2L 2-Valve SOHC EFI NA V8 Flex-Fuel
- Firm Suspension- Front Anti-Roll Bar- Front Suspension w/Coil Springs
- GVWR: 10,000 lb Payload Package- HD Shock Absorbers
- Hydraulic Power-Assist Steering- Leaf Rear Suspension w/Leaf Springs
- Part-Time Four-Wheel Drive- Single Stainless Steel Exhaust- Transmission w/Oil Cooler
- Transmission: TorqShift-G 6-Spd Auto w/SelectShift

Option Packages

Factory Installed Packages

ENGINE: 6.7L 4V OHV POWER STROKE
V8 TURBO DIESEL B20

-inc: 4 valve OHV, manual push-button engine-exhaust braking and intelligent oil-life monitor, 34 Gallon Fuel Tank, Extra Heavy-Duty 220 Amp Alternator, 3.31 Axle Ratio, Dual 78-AH 750 CCA Batteries

\$8,795

TRANSMISSION: TORQSHIFT-G 6-SPD
AUTO W/SELECTSHIFT

WHITE PLATINUM METALLIC TRI-COAT

\$595

Option Packages Total

\$9,390



texasautovalue.com

4695471642

4112 Billy Mitchell Dr.

Addison, TX 75001

© 2019 AutoRevo - All rights reserved. - Powered by AutoRevo