



## 2012 Chevrolet Corvette Z16 Grand Sport Heads & Cam w/ 3LT

**Website Price \$32,995**

View this vehicle on our website at [autoparkdallas.com](http://autoparkdallas.com)



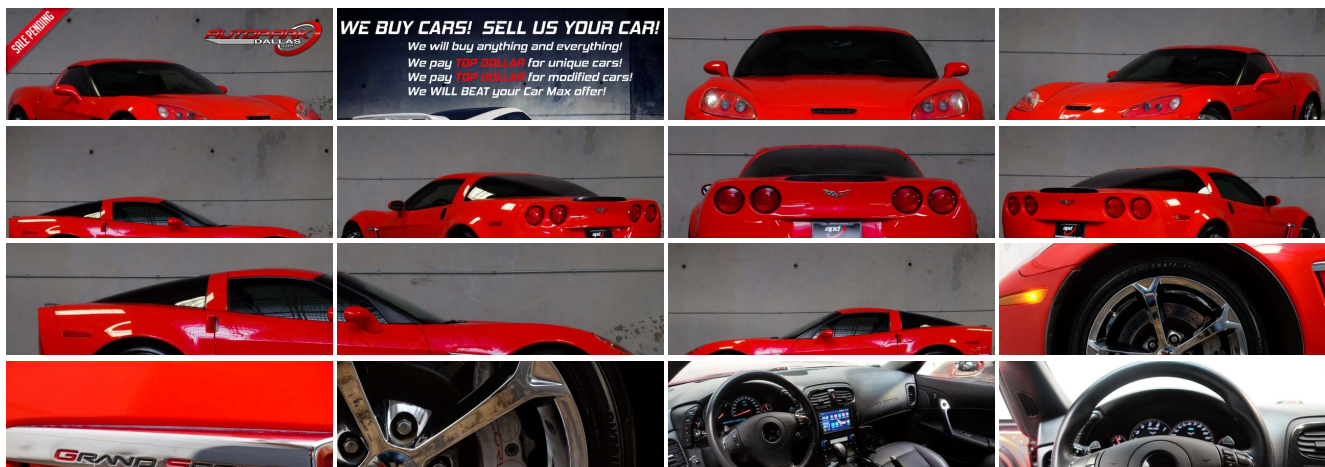
(214) 945-2601

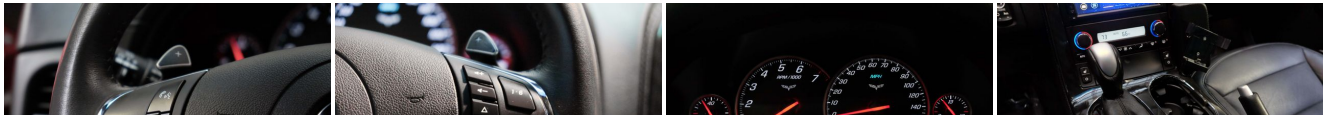
2061 S Stemmons Fwy , Lewisville, TX 75067

Photos

Details

Contact





## Specifications:

<b>Year:</b>	2012
<b>VIN:</b>	<a href="#">1G1YW2DW1C5102709</a>
<b>Make:</b>	Chevrolet
<b>Model/Trim:</b>	Corvette Z16 Grand Sport Heads & Cam w/ 3LT
<b>Condition:</b>	Pre-Owned
<b>Body:</b>	Coupe
<b>Exterior:</b>	Torch Red
<b>Engine:</b>	ENGINE, 6.2L (376 CI) V8 SFI
<b>Interior:</b>	Ebony Leather
<b>Transmission:</b>	TRANSMISSION, 6-SPEED PADDLE SHIFT WITH AUTOMATIC MODES
<b>Mileage:</b>	49,083
<b>Drivetrain:</b>	Rear Wheel Drive
<b>Economy:</b>	City 15 / Highway 25

## Vehicle Description

AutoPark Dallas is excited to offer you this modified 2012 Chevrolet Corvette Grand Sport Heads/Cam 3LT for sale! Deep history has brought these stunning cars to life. On January 17, 1953, at New York's Waldorf Astoria hotel the first Corvette was introduced to America. Since then everybody knows the sleek and sporty look of the Corvette, the beauty behind everything put into these beasts is what keeps us in love. No matter if your an enthusiast or just want a fun ride that gives you the sense of freedom, come check out this fantastic Corvette Grand Sport in our 16,000 Sq Ft Showroom located in Addison, TX. amongst our 60+ inventory!

---

### 2012 Chevrolet Corvette Z16 Grand Sport

**\*2 Set of Keys!\***

**\*LT3 Package!\***

### MODIFICATIONS!

Stainless Steel Long Tube Headers

Aftermarket Cam

MagnaFlow Cat-Back Exhaust

Window Tinted

Injectors

### STOCK!

Torch Red Exterior

Ebony Leather Interior

Hands Free Bluetooth

Heated Seats

Navigation w/ Voice Command

Back-Up Camera

Dual Climate Controls

Steering Wheel Mounted Controls

Cruise Control

Driver Seat Memory

Bose Premium Audio System

Manual Mode w/ Paddle Shifters

6.2L (376 CI) V8 SFI Engine

6-Speed Automatic Transmission

Rear Wheel Drive

Professionally Detailed!

Well Maintained!

Texas Owned Vehicle!

AND SO MUCH MORE!!!

## Financing is available!

Get pre-approved in no time by filling out a credit application on the finance section of our website!

**\*\*All vehicles are priced for QUICK SALE. All REASONABLE offers will be considered\*\***

AutoPark Dallas is dedicated to offering a level of customer service not usually found in the automobile industry. We take pride in continuing this service long after the vehicle has been delivered. We strive for excellence and make every effort to see that our customer is completely satisfied with every purchase. Referrals and Testimonials is what our business is built on.

Our extensive buying experience guarantees quality, pre-owned and new vehicles hand-picked from factory sources. Our love for the automobile and our dislike of traditional dealership tactics motivate us to provide the service we do!

Pre-purchase inspections are always welcomed! We also offer airport shuttles, amazing finance options, and so much more!

We accept trade-ins, will BUY your car (modified or not) even if you don't buy one from us, and offer consignment deals to SELL your vehicle for you! For more information just give us a CALL or TEXT!!

# #214-945-2601

## Call or Text **Anytime!**

## Se habla Español

# WWW.AUTOPARKDALLAS.COM

### Installed Options

#### Interior

- Air conditioning, dual-zone automatic climate control with individual climate settings for driver and right-front passenger and outside temperature display
- Air filtration system with pollen filter- Cargo net and luggage shade
- Console, floor 2 covered cup holders, ashtray with cigar lighter, auxiliary power outlet and CD storage
- Cruise control, electronic with set and resume speed - Defogger, rear-window, electric
- Door locks, power programmable with lockout protection- Floor mats, carpeted
- Hatch release, push button open with power hatch pulldown
- Head-Up Display with dot-matrix readouts for street mode, track mode with g-meter,

### Option Packages

#### Factory Installed Packages

ENGINE, 6.2L (376 CI) V8 SFI  
(430 hp [320.6 kW] @ 5900 rpm, 424 lb-ft of  
torque [572.4 N-m] @ 4600 rpm)

TRANSMISSION, 6-SPEED PADDLE SHIFT WITH AUTOMATIC  
MODES

\$1,250

- vehicle speed, engine rpm and readings from key gauges including water temperature and oil pressure
- Instrumentation, electronic analog with Driver Information Center and 2-line display
  - Keyless Access with push button start and 2 remote transmitters that enable automatic door unlock and open by touching door switch
  - Lighting, interior with courtesy, cargo and glovebox
  - Memory Package, recalls 2 driver "presets" for 6-way power seat, outside mirrors and telescoping steering column
  - Mirror, inside rearview auto-dimming with compass, includes dual reading lights
  - Oil life monitoring system- OnStar Turn-by-Turn Navigation
  - Seat adjuster, driver 6-way power- Seat adjusters, power bolster and power lumbar
  - Seats, Sport front bucket with perforated leather seating surfaces includes back angle adjustment, adjustable lumbar and side bolsters
  - Seats, heated driver and front passenger
  - Steering column, power telescopic with manual tilt
  - Steering wheel controls, mounted audio controls
  - Steering wheel, 3-spoke leather-wrapped- Stolen Vehicle Assistance
  - Storage, with lockable glovebox, center console and 2 rear compartments with covers (Only includes 1 rear storage compartment with manual transmission.)
  - Universal Home Remote includes garage door opener, 3-channel programmable, located on driver visor
  - Visors, driver and front passenger illuminated vanity mirrors
  - Windows, power with driver and passenger Express-Down

## Exterior

- Roof panel, 1-piece body-color, removable
- Tires, front P275/35ZR18 Eagle F1 Supercar and rear P325/30ZR19 Eagle F1 Supercar run flat
- Wheels, Grand Sport Silver painted aluminum 18" x 9.5" (45.7 cm x 24.1 cm) front and 19" x 12" (48.3 cm x 30.48 cm) rear
- Fog lamps, front, integral in front fascia- Glass, Solar-Ray light-tinted
- Headlamps, dual projector lamps, Xenon, High-Intensity Discharge (HID) low-beam tungsten-halogen high-beam with automatic exterior lamp control
- Mirrors, outside heated power-adjustable and driver-side auto-dimming, body- color
- Wipers, front intermittent

## Safety

- Air conditioning, dual-zone automatic climate control with individual climate settings for driver and right-front passenger and outside temperature display
- Air filtration system with pollen filter- Cargo net and luggage shade
- Console, floor 2 covered cup holders, ashtray with cigar lighter, auxiliary power outlet and CD storage
- Cruise control, electronic with set and resume speed - Defogger, rear-window, electric
- Door locks, power programmable with lockout protection- Floor mats, carpeted
- Hatch release, push button open with power hatch pulldown
- Head-Up Display with dot-matrix readouts for street mode, track mode with g-meter, vehicle speed, engine rpm and readings from key gauges including water temperature and oil pressure
- Instrumentation, electronic analog with Driver Information Center and 2-line display
- Keyless Access with push button start and 2 remote transmitters that enable automatic door unlock and open by touching door switch
- Lighting, interior with courtesy, cargo and glovebox
- Memory Package, recalls 2 driver "presets" for 6-way power seat, outside mirrors and telescoping steering column
- Mirror, inside rearview auto-dimming with compass, includes dual reading lights
- Oil life monitoring system- OnStar Turn-by-Turn Navigation
- Seat adjuster, driver 6-way power- Seat adjusters, power bolster and power lumbar
- Seats, Sport front bucket with perforated leather seating surfaces includes back angle adjustment, adjustable lumbar and side bolsters
- Seats, heated driver and front passenger
- Steering column, power telescopic with manual tilt
- Steering wheel controls, mounted audio controls
- Steering wheel, 3-spoke leather-wrapped- Stolen Vehicle Assistance
- Storage, with lockable glovebox, center console and 2 rear compartments with covers (Only includes 1 rear storage compartment with manual transmission.)
- Universal Home Remote includes garage door opener, 3-channel programmable, located on driver visor
- Visors, driver and front passenger illuminated vanity mirrors
- Windows, power with driver and passenger Express-Down

## Mechanical

- Transmission, 6-speed manual, short-throw includes launch control, specific gearing and quicker ratios
- Brakes, 4-wheel antilock, 4-wheel disc- Calipers, Silver

## EXHAUST, DUAL-MODE, PERFORMANCE

increases horsepower, adds 6 hp, aggressive exhaust sound **\$1,195**

## GRAND SPORT HERITAGE PACKAGE

includes two-tone leather seats (solid color with (193/195) Ebony), Grand Sport logo seat headrest embroidery and fender stripe hash mark design in (17A) Light Silver Metallic, (40A) Pearl White, (75A) Victory Red or (90A) Cyber Gray **\$1,195**

## LICENSE PLATE BRACKET, FRONT

**\$15**

## SEAT ADJUSTER, FRONT PASSENGER 6-WAY POWER

## REAR AXLE, 2.73 RATIO, LIMITED-SLIP, PERFORMANCE

## EMISSIONS, FEDERAL REQUIREMENTS

## TORCH RED

## STANDARD PAINT

## 3LT PREFERRED EQUIPMENT GROUP

includes Standard Equipment **\$5,995**

## AUDIO SYSTEM WITH NAVIGATION, AM/FM STEREO WITH CD PLAYER, MP3 PLAYBACK AND DVD-BASED TOUCH-SCREEN NAVIGATION

USB port, auxiliary input jack, seek-and-scan, digital clock, auto-tone control, Radio Data System (RDS), automatic volume, TheftLock, 6.5" LCD color display and voice recognition.

## EBONY, LEATHER SEATING SURFACES

## SEATS, SPORT FRONT BUCKET WITH PERFORATED LEATHER SEATING SURFACES

includes back angle adjustment, adjustable lumbar and side bolsters

## WHEELS, GRAND SPORT CHROME ALUMINUM

18" x 9.5" (45.7 cm x 24.1 cm) front and 19" x 12" (48.3 cm x 30.48 cm) rear **\$1,995**

## Option Packages Total

**\$11,645**

- Engine access, rear-opening hood
- Engine, 6.2L (376 ci) V8 SFI (430 hp [320.6 kW] @ 5900 rpm, 424 lb-ft of torque [572.4 N-m] @ 4600 rpm)
- Exhaust, aluminized stainless-steel with 3" polished stainless-steel tips
- Performance Package includes dry sump oil system, rear-mounted battery and differential cooler (Deleted when (MYC) 6-speed paddle shift, automatic transmission is ordered.)
- Rear axle, 3.42 ratio, limited slip (Included and only available with (MZ6) 6-speed manual transmission.)
- Rear wheel drive- Steering, power, speed-sensitive rack-and-pinion, variable ratio

# AUTOPARK

## Dallas

Auto Park Dallas

View this car on our website at [autoparkdallas.com/6593872](https://autoparkdallas.com/6593872)

Website: [autoparkdallas.com](https://autoparkdallas.com)

Phone: (214) 945-2601

Map: 2061 S Stemmons Fwy, Lewisville, TX 75067

