

2015 Nissan Versa S Plus

View this car on our website at dougjustus.com/6591638/ebrochure



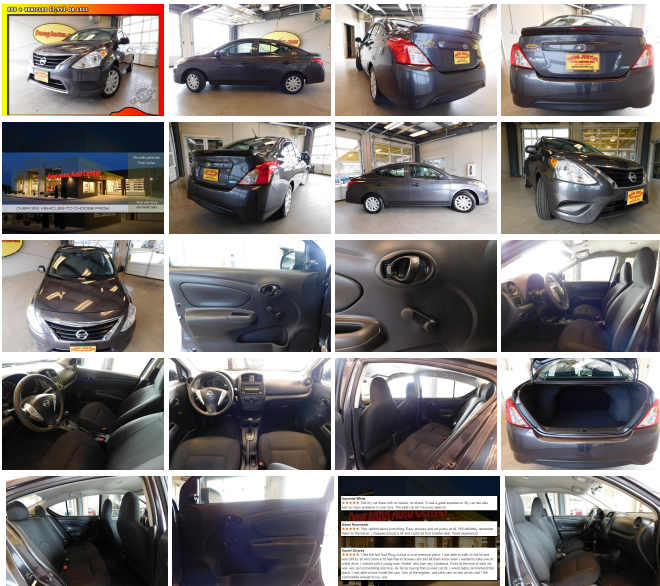
Our Price **\$5,500**

Specifications:

| | |
|--------------------|---------------------------------------|
| Year: | 2015 |
| VIN: | 3N1CN7AP7FL955699 |
| Make: | Nissan |
| Stock: | N55699 |
| Model/Trim: | Versa S Plus |
| Condition: | Pre-Owned |
| Body: | Sedan |
| Exterior: | Amethyst Gray |
| Engine: | Engine: 1.6L DOHC 16 Valve 4-Cylinder |
| Interior: | Black Cloth |
| Mileage: | 99,195 |
| Drivetrain: | Front Wheel Drive |
| Economy: | City 31 / Highway 40 |

Free 30-Days or 1000 miles limited Powertrain Warranty. Visit our website for more details.

Automatic 1.6L 4-cyl 2015 Nissan Versa gets up to 40 MPG hwy. This vehicle comes equipped with cloth interior, power locks, power steering, and many more features. Visit www.dougjustus.com, call: *865-281-1540*, or text: *865-214-0010* for more info.



2015 Nissan Versa S Plus

Doug Justus Auto Center Inc - (865)281-1540 - View this car on our website at dougjustus.com/6591638/ebrochure

Our Location :



2015 Nissan Versa S Plus

Doug Justus Auto Center Inc - (865)281-1540 - View this car on our website at dougjustus.com/6591638/ebrochure

Installed Options

Interior

- Adjustable Front Bucket Seats -inc: 4-way manual driver's seat - Driver Seat
- 4-Way Passenger Seat -inc: Manual Recline and Fore/Aft Movement
- Bench Front Facing Rear Seat - Manual Tilt Steering Column
- Gauges -inc: Speedometer, Odometer, Tachometer, Trip Odometer and Trip Computer
- Manual Rear Windows- Front Cupholder- Rear Cupholder
- Remote Releases -Inc: Mechanical Fuel- Cruise Control w/Steering Wheel Controls
- Manual Air Conditioning- Glove Box- Driver Foot Rest
- Interior Trim -inc: Metal-Look Instrument Panel Insert and Metal-Look Interior Accents
- Full Cloth Headliner- Urethane Gear Shift Knob- Cloth Seat Trim
- Day-Night Rearview Mirror
- Passenger Visor Vanity Mirror w/Driver And Passenger Auxiliary Mirror
- Full Floor Console w/Storage and 1 12V DC Power Outlet - Fade-To-Off Interior Lighting
- Full Carpet Floor Covering- Carpet Floor Trim- Cargo Space Lights
- Driver And Passenger Door Bins- Manual 1st Row Windows- Delayed Accessory Power
- Trip Computer- Digital/Analog Display- Seats w/Cloth Back Material
- Fixed Front Head Restraints and Manual Adjustable Rear Head Restraints
- 1 12V DC Power Outlet

Exterior

- Wheels: 15" Steel w/Full Wheel Covers- Tires: P185/65R15 AS -inc: Low rolling
- Steel Spare Wheel- Compact Spare Tire Mounted Inside Under Cargo- Clearcoat Paint
- Body-Colored Front Bumper- Body-Colored Rear Bumper
- Black Side Windows Trim and Black Front Windshield Trim - Black Door Handles
- Black Manual Remote Side Mirrors w/Manual Folding- Fixed Rear Window w/Defroster
- Light Tinted Glass- Fixed Interval Wipers- Fully Galvanized Steel Panels
- Black Grille w/Chrome Surround- Lip Spoiler- Trunk Rear Cargo Access
- Aero-Composite Halogen Headlamps

Safety

- Adjustable Front Bucket Seats -inc: 4-way manual driver's seat - Driver Seat
- 4-Way Passenger Seat -inc: Manual Recline and Fore/Aft Movement
- Bench Front Facing Rear Seat - Manual Tilt Steering Column
- Gauges -inc: Speedometer, Odometer, Tachometer, Trip Odometer and Trip Computer
- Manual Rear Windows- Front Cupholder- Rear Cupholder
- Remote Releases -Inc: Mechanical Fuel- Cruise Control w/Steering Wheel Controls
- Manual Air Conditioning- Glove Box- Driver Foot Rest
- Interior Trim -inc: Metal-Look Instrument Panel Insert and Metal-Look Interior Accents
- Full Cloth Headliner- Urethane Gear Shift Knob- Cloth Seat Trim
- Day-Night Rearview Mirror
- Passenger Visor Vanity Mirror w/Driver And Passenger Auxiliary Mirror
- Full Floor Console w/Storage and 1 12V DC Power Outlet - Fade-To-Off Interior Lighting
- Full Carpet Floor Covering- Carpet Floor Trim- Cargo Space Lights
- Driver And Passenger Door Bins- Manual 1st Row Windows- Delayed Accessory Power
- Trip Computer- Digital/Analog Display- Seats w/Cloth Back Material
- Fixed Front Head Restraints and Manual Adjustable Rear Head Restraints
- 1 12V DC Power Outlet

Mechanical

- Engine: 1.6L DOHC 16 Valve 4-Cylinder- Transmission: Xtronic CVT- Front-Wheel Drive
- 3.75 Axle Ratio- 47-Amp/Hr 470CCA Maintenance-Free Battery w/Run Down Protection
- 110 Amp Alternator- Gas-Pressurized Shock Absorbers- Front And Rear Anti-Roll Bars
- Electric Power-Assist Speed-Sensing Steering- 10.8 Gal. Fuel Tank
- Single Stainless Steel Exhaust- Strut Front Suspension w/Coil Springs
- Torsion Beam Rear Suspension w/Coil Springs
- Front Disc/Rear Drum Brakes w/4-Wheel ABS, Front Vented Discs and Brake Assist

(865)281-1540

872 Mimosa Heights Dr.

Airport Motor Mile (Alcoa) , TN 37777

© 2019 AutoRevo - All rights reserved. - Powered by AutoRevo