

2016 Toyota Tundra SR5

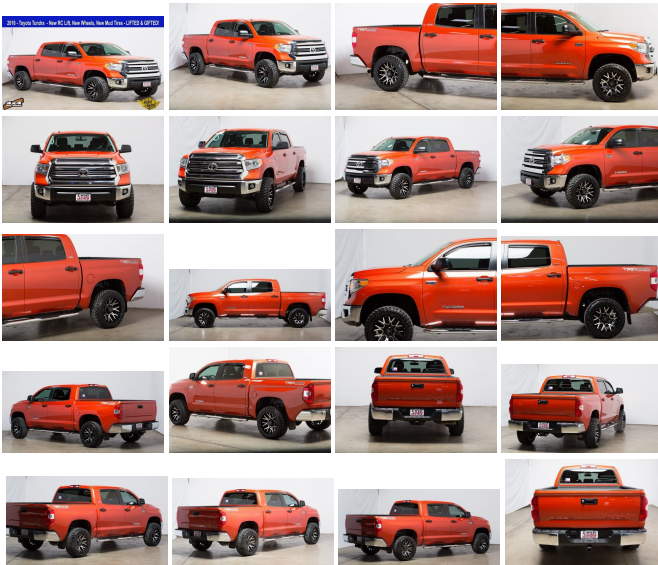
View this car on our website at texasautovalue.com/6591521/ebrochure



Our Price **\$36,980**

Specifications:

Year:	2016
VIN:	5TFDW5F18GX536354
Make:	Toyota
Stock:	536354
Model/Trim:	Tundra SR5
Condition:	Pre-Owned
Body:	Pickup Truck
Exterior:	Inferno Red
Engine:	Engine: 5.7L V8 DOHC 32V FFV w/i-Force -inc: dual independent variable valve timing w/intelligence
Interior:	Graphite Cloth
Mileage:	25,538
Drivetrain:	4 Wheel Drive
Economy:	City 13 / Highway 17



2016 Toyota Tundra SR5

Offered by: *Texas Auto Value* - 469-547-1642

VIN: 5TFDW5F18GX536354
Year: 2016
Make: Toyota
Model: Tundra
Trim: SR5
Stock #: 536354
Condition: Pre-Owned
Mileage: 25538
MPG: 17 Hwy / 13 City
Exterior Color: Red
Interior: Other Cloth
Body: Pickup Truck
Cab Style: Transmission: Automatic
Engine: Engine: 5.7L V8 DOHC 32V FFV w/i-Force -inc: dual independent variable valve timing w/intelligence

Texas Auto Value - texasautovalue.com

- Qualifies for CarFax Buyback Guarantee
- CarFax reports No Accidents!
- CarFax reports No Damage!

Description (for 2016 Toyota Tundra) 2016 Toyota Tundra SR5 5.7L V8 Inferno Red New 2.5" Leveling Kit , New Tires, New Wheels, ONLY 25K Miles!!!, 4WD, Graphite w/Fabric Seat Trim or Fabric Seat Trim w/TRD Off-Road Package, Navigation System, Trail-Tuned Bilstein Shock Absorbers, TRD Off Road Package, TRD Off-Road Graphics, .Texas Auto Value your home for the best Lifted & Gifted inventory in Texas! A clear and simple car buying experience, No Haggle Pricing.

Included Features (for 2016 Toyota Tundra)

INTERIOR

- 1 Seatback Storage Pocket
- 3 12V DC Power Outlets
- 60-40 Folding Split-Bench Front Facing Fold-Up Cushion Rear Seat w/Manual Fore/Aft
- Air Filtration
- Analog Display
- Cruise Control w/Steering Wheel Controls
- Dashboard Storage, Driver / Passenger And Rear Door Bins and 1st Row Underseat Storage
- Day-Night Rearview Mirror
- Delay Off Interior Lighting
- Delayed Accessory Power
- Driver And Passenger Visor Vanity Mirrors
- Driver Foot Rest
- Driver Seat
- Front And Rear Map Lights
- Front Center Armrest w/Storage and Rear Center Armrest
- Front Cupholder
- Full Carpet Floor Covering
- Full Cloth Headliner
- Full Overhead Console w/Storage and 3 12V DC Power Outlets
- HVAC -inc: Underseat Ducts
- Illuminated Locking Glove Box
- Interior Trim -inc: Metal-Look Instrument Panel Insert, Metal-Look Door Panel Insert and Metal-Look Interior Accents
- Manual Adjustable Front Head Restraints and Manual Adjustable Rear Head Restraints
- Manual Air Conditioning
- Outside Temp Gauge
- Passenger Seat
- Pickup Cargo Box Lights
- Rear Cupholder
- Systems Monitor
- Urethane Gear Shift Knob

MECHANICAL

- 1 Skid Plate
- 1555# Maximum Payload
- 170 Amp Alternator
- 26.4 Gal. Fuel Tank
- 4-Wheel Disc Brakes w/4-Wheel ABS, Front And Rear Vented Discs and Brake Assist
- 4.30 Axle Ratio
- 710CCA Maintenance-Free Battery
- Auto Locking Hubs
- Brake Actuated Limited Slip Differential
- Class IV Towing Equipment -inc: Harness, Hitch, Brake Controller and Trailer Sway Control
- Double Wishbone Front Suspension w/Coil Springs
- Electronic Transfer Case
- Engine Oil Cooler
- Engine: 5.7L V8 DOHC 32V FFV w/i-Force -inc: dual independent variable valve timing w/intelligence
- Front Anti-Dive Bar

- FRONT AIR-BAG
- Gas-Pressurized Shock Absorbers
- GVWR: 7,200 lbs
- Hydraulic Power-Assist Speed-Sensing Steering
- Leaf Rear Suspension w/Leaf Springs
- Part-Time Four-Wheel Drive
- Single Stainless Steel Exhaust

SAFETY

- Airbag Occupancy Sensor
- Curtain 1st And 2nd Row Airbags
- Driver And Passenger Knee Airbag
- Dual Stage Driver And Passenger Front Airbags
- Dual Stage Driver And Passenger Seat-Mounted Side Airbags
- Low Tire Pressure Warning
- Outboard Front Lap And Shoulder Safety Belts -inc: Rear Center 3 Point, Height Adjusters and Pretensioners
- Rear Child Safety Locks
- Side Impact Beams

EXTERIOR

- Black Door Handles
- Black Front Bumper w/Chrome Rub Strip/Fascia Accent and 2 Tow Hooks
- Black Rear Step Bumper w/Chrome Rub Strip/Fascia Accent
- Black Side Windows Trim, Black Front Windshield Trim and Black Rear Window Trim
- Cargo Lamp w/High Mount Stop Light
- Chrome Grille
- Clearcoat Paint
- Deep Tinted Glass
- Front Fog Lamps
- Front Windshield -inc: Sun Visor Strip
- Full-Size Spare Tire Stored Underbody w/Crankdown
- Fully Galvanized Steel Panels
- Manual-Leveling Auto Off Aero-Composite Halogen Daytime Running Headlamps
- Power Rear Window w/Defroster
- Regular Box Style
- Splash Guards
- Steel Spare Wheel
- Tailgate Rear Cargo Access
- Variable Intermittent Wipers w/Heated Wiper Park

ENTERTAINMENT

- Fixed Antenna
- Radio w/Clock

Toyota_ Tundra_

2016 Toyota Tundra SR5* Toyota* Tundra* SR5* Engine: 5.7L V8 DOHC 32V FFV w/i-Force -inc: dual independent variable valve timing w/intelligence* 25538 * Automatic * Toyota Tundra* 2016 * Other * Red * Pickup Truck* Tundra SR5* 2016 Toyota * * Gasoline * Addison* Addison, TX* 2016 Toyota Tundra

Vehicle History Report : as Of 03/24/2019

Snapshot

2016 TOYOTA TUNDRA CREWMAX SR5/CREWMA

	No accidents reported to CARFAX
	No damage reported to CARFAX
	2 Previous owners
	11 Service history records
	Personal vehicle
	24,823 Last reported odometer reading

FREE CARFAX Report

See the full CARFAX Report for additional information

*carfax Snapshot is a reflection of available information on the date the report was pulled. carfax is constantly being updated with new information and is subject to change at any time.

Our Location :

Map data ©2019 Google

2016 Toyota Tundra SR5

Installed Options

Interior

- 3-Passenger Front Bench Seat -inc: 40/20/40 split fold-down, 4-way manual adjustable front seats
- Driver Seat- Passenger Seat
- 60-40 Folding Split-Bench Front Facing Fold-Up Cushion Rear Seat w/Manual Fore/Aft
- Manual Tilt Steering Column
- Gauges -inc: Speedometer, Odometer, Voltmeter, Oil Pressure, Engine Coolant Temp, Tachometer, Trip Odometer and Trip Computer
- Power Rear Windows- Front Cupholder- Rear Cupholder
- Remote Keyless Entry w/4 Door Curb/Courtesy, Illuminated Entry and Panic Button
- Cruise Control w/Steering Wheel Controls- Manual Air Conditioning
- HVAC -inc: Underseat Ducts- Illuminated Locking Glove Box- Driver Foot Rest
- Full Cloth Headliner- Urethane Gear Shift Knob
- Interior Trim -inc: Metal-Look Instrument Panel Insert, Metal-Look Door Panel Insert and Metal-Look Interior Accents
- Fabric Seat Trim- Day-Night Rearview Mirror- Driver And Passenger Visor Vanity Mirrors
- Full Overhead Console w/Storage and 3 12V DC Power Outlets
- Delay Off Interior Lighting- Front And Rear Map Lights- Full Carpet Floor Covering
- Pickup Cargo Box Lights
- Dashboard Storage, Driver / Passenger And Rear Door Bins and 1st Row Underseat Storage
- Power 1st Row Windows w/Driver 1-Touch Down- Power Door Locks w/Autolock Feature
- Delayed Accessory Power- Systems Monitor- Trip Computer- Outside Temp Gauge
- Analog Display- 1 Seatback Storage Pocket
- Manual Adjustable Front Head Restraints and Manual Adjustable Rear Head Restraints
- Front Center Armrest w/Storage and Rear Center Armrest- Engine Immobilizer
- Air Filtration- 3 12V DC Power Outlets

Exterior

- Wheels: 18" x 8J Styled Steel - Tires: P255/70R18 AS Michelin- Regular Box Style
- Steel Spare Wheel- Full-Size Spare Tire Stored Underbody w/Crankdown
- Clearcoat Paint
- Black Front Bumper w/Chrome Rub Strip/Fascia Accent and 2 Tow Hooks
- Black Rear Step Bumper w/Chrome Rub Strip/Fascia Accent
- Black Side Windows Trim, Black Front Windshield Trim and Black Rear Window Trim
- Black Door Handles- Black Power Heated Side Mirrors w/Manual Folding
- Power Rear Window w/Defroster- Front Windshield -inc: Sun Visor Strip
- Deep Tinted Glass- Variable Intermittent Wipers w/Heated Wiper Park
- Fully Galvanized Steel Panels- Splash Guards- Chrome Grille
- Tailgate Rear Cargo Access- Manual Tailgate/Rear Door Lock
- Manual-Leveling Auto Off Aero-Composite Halogen Daytime Running Headlamps
- Cargo Lamp w/High Mount Stop Light- Front Fog Lamps

Safety

- 3-Passenger Front Bench Seat -inc: 40/20/40 split fold-down, 4-way manual adjustable front seats
- Driver Seat- Passenger Seat
- 60-40 Folding Split-Bench Front Facing Fold-Up Cushion Rear Seat w/Manual Fore/Aft
- Manual Tilt Steering Column
- Gauges -inc: Speedometer, Odometer, Voltmeter, Oil Pressure, Engine Coolant Temp, Tachometer, Trip Odometer and Trip Computer
- Power Rear Windows- Front Cupholder- Rear Cupholder
- Remote Keyless Entry w/4 Door Curb/Courtesy, Illuminated Entry and Panic Button
- Cruise Control w/Steering Wheel Controls- Manual Air Conditioning
- HVAC -inc: Underseat Ducts- Illuminated Locking Glove Box- Driver Foot Rest
- Full Cloth Headliner- Urethane Gear Shift Knob
- Interior Trim -inc: Metal-Look Instrument Panel Insert, Metal-Look Door Panel Insert and Metal-Look Interior Accents
- Fabric Seat Trim- Day-Night Rearview Mirror- Driver And Passenger Visor Vanity Mirrors
- Full Overhead Console w/Storage and 3 12V DC Power Outlets
- Delay Off Interior Lighting- Front And Rear Map Lights- Full Carpet Floor Covering
- Pickup Cargo Box Lights
- Dashboard Storage, Driver / Passenger And Rear Door Bins and 1st Row Underseat Storage
- Power 1st Row Windows w/Driver 1-Touch Down - Power Door Locks w/Autolock Feature
- Delayed Accessory Power- Systems Monitor- Trip Computer- Outside Temp Gauge
- Analog Display- 1 Seatback Storage Pocket
- Manual Adjustable Front Head Restraints and Manual Adjustable Rear Head Restraints
- Front Center Armrest w/Storage and Rear Center Armrest- Engine Immobilizer
- Air Filtration- 3 12V DC Power Outlets

Mechanical

- Engine: 5.7L V8 DOHC 32V FFV w/i-Force -inc: dual independent variable valve timing w/intelligence
- Transmission: Electronic 6-Speed Automatic w/OD -inc: intelligence (ECT-I), sequential shift mode, uphill/downhill shift logic and TOW/HAUL mode
- 4.30 Axle Ratio- GVWR: 7,200 lbs
- Transmission w/Driver Selectable Mode, Sequential Shift Control and Oil Cooler
- Electronic Transfer Case- Part-Time Four-Wheel Drive- Engine Oil Cooler
- 710CCA Maintenance-Free Battery- 170 Amp Alternator
- Class IV Towing Equipment -inc: Harness, Hitch, Brake Controller and Trailer Sway Control
- 1 Skid Plate- 1555# Maximum Payload- Gas-Pressurized Shock Absorbers
- Front Anti-Roll Bar- Hydraulic Power-Assist Speed-Sensing Steering- 26.4 Gal. Fuel Tank
- Single Stainless Steel Exhaust- Auto Locking Hubs
- Double Wishbone Front Suspension w/Coil Springs
- Leaf Rear Suspension w/Leaf Springs
- 4-Wheel Disc Brakes w/4-Wheel ABS, Front And Rear Vented Discs and Brake Assist
- Brake Actuated Limited Slip Differential



texasautovalue.com

4695471642

4112 Billy Mitchell Dr.

Addison, TX 75001

© 2019 AutoRevo - All rights reserved. - Powered by AutoRevo