



2007 LAND ROVER RANGE ROVER HSE NAVIAGTION AUTOMATIC SERVICE RECORDS

Contact Sales 310-987-1212

Our Price \$5,490

Retail Value \$7,893

View this vehicle on our website at boutiqueautosales.com

Boutique Auto Sales

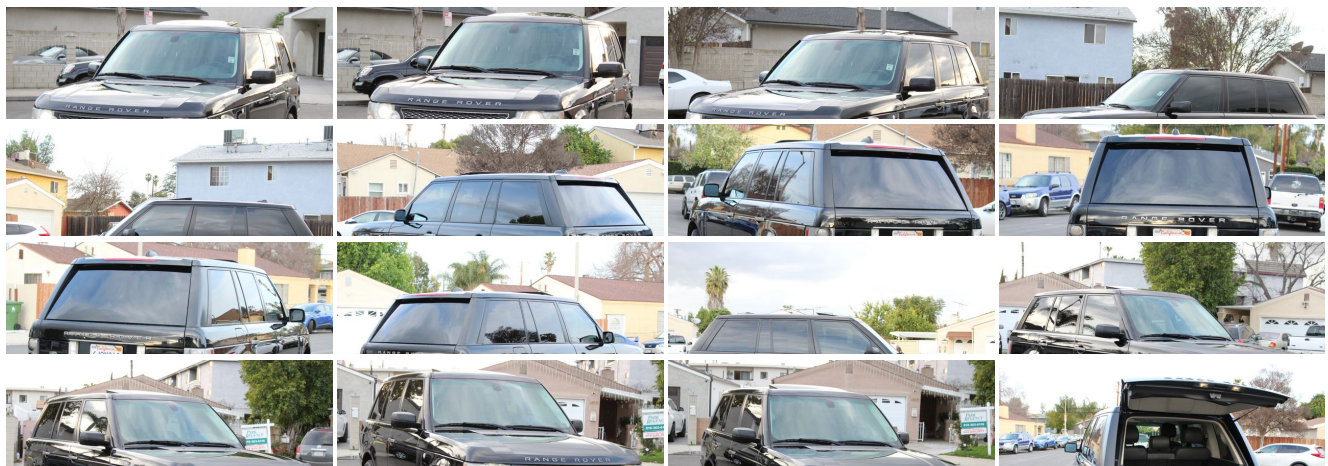
[310-987-1212](tel:310-987-1212)

5950 Laurel Canyon Blvd, North Hollywood, CA 91607

Photos

Details

Contact





Specifications:

Year:	2007
VIN:	SALME15467A244723
Make:	LAND ROVER
Stock:	4723
Model/Trim:	RANGE ROVER HSE NAVIAGTION AUTOMATIC SERVICE RECORDS
Condition:	Pre-Owned
Body:	SUV
Exterior:	Java Black
Engine:	4.4L V8 engine
Interior:	Charcoal Leather
Mileage:	169,551
Drivetrain:	All Wheel Drive
Economy:	City 12 / Highway 18

Vehicle Description

Installed Options

Interior

- "Convenience Close" for windows & sunroof that closes all w/one action
- 14-way driver/passenger pwr heated leather front bucket seats-inc: dual folding armrests, adjustable head restraints, pwr lumbar
- 2nd row auxiliary audio input jack behind center console
- 3-driver memory-inc: driver seat, steering column, exterior mirrors
- 60/40 split folding heated rear seat w/integrated ski bag
- 710-watt Harman/Kardon LOGIC7 audio system-inc: AM/FM stereo, 6-disc CD changer, cassette, (14) speakers
- American cherry wood trim-inc: center console, fascia, doors
- Auto-dimming rearview mirror- Center console storage bin
- Cruise control w/steering wheel mounted controls- Cupholders-inc: (3) front, (2) rear
- Dual glass-mounted antenna system- Dual-blade sun visors w/illuminated vanity mirrors
- Foldable/removable rear loadspace cover- Front heated windscreen
- Front seatback storage pockets- Front/rear door map pockets
- Front/rear park distance control
- GPS off-road enhanced navigation system-inc: touchscreen interface, 4x4 driver info
- Heated steering wheel- Homelink system for garage doors & security gates
- Instrumentation-inc: tachometer, fuel filler door indicator, comprehensive message center w/trip computer, analog clock
- Leather-wrapped gear shift knob
- Leather-wrapped pwr tilt/telescopic steering wheel w/automatic tilt-away
- Outside temp display- Overhead sunglasses holder
- Personal telephone integration system w/bluetooth technology
- Pwr central locking doors/tailgate/fuel filler door w/"superlocking" feature
- Pwr windows-inc: retained accessory pwr, one-touch open/close, anti-trap feature
- Rear window defogger- Rearview camera- Sirius satellite radio tuner
- Steering wheel mounted audio controls- Tire pressure monitoring system (TPMS)
- Triple-zone automatic climate control-inc: pollen filter, programmed defogger
- Vehicle security system w/keyless entry- Voice control for navigation, audio, telephone

Exterior

- Bi-Xenon single-piece headlamps w/auto headlamps, pwr washers
- Deep-tinted glass aft of B-pillar- Front/rear fog lamps
- Intermittent rear window washer/wiper- Laminated exterior glass panels
- Pwr folding heated mirrors
- Pwr sunroof-inc: deep-tinted glass, retained accessory pwr, one-touch open/close, anti-

Option Packages

Factory Installed Packages

20" 7-SPOKE ALLOY WHEELS	\$4,000
ELECTRONIC REAR DIFFERENTIAL LOCK	\$500
LUXURY INTERIOR PKG -inc: 14-way heated/cooled pwr adjustable driver/front passenger seats w/premium Windsor leather seating surfaces, center console wood trim, adaptive front lighting, auto-dimming exterior mirrors, luggage net	\$4,500
REAR SEAT ENTERTAINMENT PKG -inc: (2) wireless headphones, remote control	\$2,500
LEATHER SEAT TRIM	
Option Packages Total	\$11,500

- 1 w/ sunroof-inc: deep tinted glass, retained accessory pwr, one touch open/close, anti-trap feature
- Split tailgate- Variable rain-sensing intermittent front windshield wipers

Safety

- "Convenience Close" for windows & sunroof that closes all w/one action
- 14-way driver/passenger pwr heated leather front bucket seats-inc: dual folding armrests, adjustable head restraints, pwr lumbar
- 2nd row auxiliary audio input jack behind center console
- 3-driver memory-inc: driver seat, steering column, exterior mirrors
- 60/40 split folding heated rear seat w/integrated ski bag
- 710-watt Harman/Kardon LOGIC7 audio system-inc: AM/FM stereo, 6-disc CD changer, cassette, (14) speakers
- American cherry wood trim-inc: center console, fascia, doors
- Auto-dimming rearview mirror- Center console storage bin
- Cruise control w/steering wheel mounted controls- Cupholders-inc: (3) front, (2) rear
- Dual glass-mounted antenna system- Dual-blade sun visors w/illuminated vanity mirrors
- Foldable/removable rear loadspace cover- Front heated windscreen
- Front seatback storage pockets- Front/rear door map pockets
- Front/rear park distance control
- GPS off-road enhanced navigation system-inc: touchscreen interface, 4x4 driver info
- Heated steering wheel- Homelink system for garage doors & security gates
- Instrumentation-inc: tachometer, fuel filler door indicator, comprehensive message center w/trip computer, analog clock
- Leather-wrapped gear shift knob
- Leather-wrapped pwr tilt/telescopic steering wheel w/automatic tilt-away
- Outside temp display- Overhead sunglasses holder
- Personal telephone integration system w/bluetooth technology
- Pwr central locking doors/tailgate/fuel filler door w/"superlocking" feature
- Pwr windows-inc: retained accessory pwr, one-touch open/close, anti-trap feature
- Rear window defogger- Rearview camera- Sirius satellite radio tuner
- Steering wheel mounted audio controls- Tire pressure monitoring system (TPMS)
- Triple-zone automatic climate control-inc: pollen filter, programmed defogger
- Vehicle security system w/keyless entry- Voice control for navigation, audio, telephone

Mechanical

- 150 amp liquid-cooled alternator- 19" x 8.0" 9-spoke aluminum alloy wheels
- 2-speed electronic transfer gearbox-inc: Torsen torque-sensing center differential, shift-on-the-move capability
- 255/55R19 tires- 4-channel 4-wheel all-terrain anti-lock brakes (ABS)
- 4-wheel electronic traction control (4ETC)- 4.4L V8 engine
- 6-speed automatic transmission w/Commandshift
- Air suspension system (4CAS)-inc: automatic load-leveling, multiple modes, cross-link valves for improved off-road performance
- Cornering brake control (CBC)
- Distributorless ignition system-inc: 4 knock sensors, dual mode electronic throttle, engine drag torque control
- Double-wishbone rear suspension-inc: gas filled shock absorbers, stabilizer bar
- Dynamic stability control (DSC)- Electronic brakeforce distribution (EBD)
- Electronic parking brake- Emergency brake assist (EBA)- Full-size spare tire
- Hill descent control (HDC)- Integral class III trailer towing hitch receiver
- MacPherson strut front suspension-inc: double-pivot lower arms, gas filled shock absorbers, stabilizer bar
- Monocoque integrated body/chassis w/(3) steel subframes - One-touch engine starting
- Permanent 4-wheel drive- Pwr rack & pinion steering
- Pwr ventilated front, solid rear disc brakes- Supercharged suspension tune
- Terrain Response system

Boutique Auto Sales

Boutique Auto Sales

View this car on our website at boutiqueautosales.com/6589034

Website: boutiqueautosales.com

Phone: 310-987-1212

Map: 5950 Laurel Canyon Blvd, North Hollywood, CA 91607

