



## 2006 Mercedes-Benz CLS55 AMG

**NO HAGGLE CASH PRICE! \$13,995**

**Average Retail Price \$16,100**

View this vehicle on our website at [sterlingmotorsport.com](http://sterlingmotorsport.com)

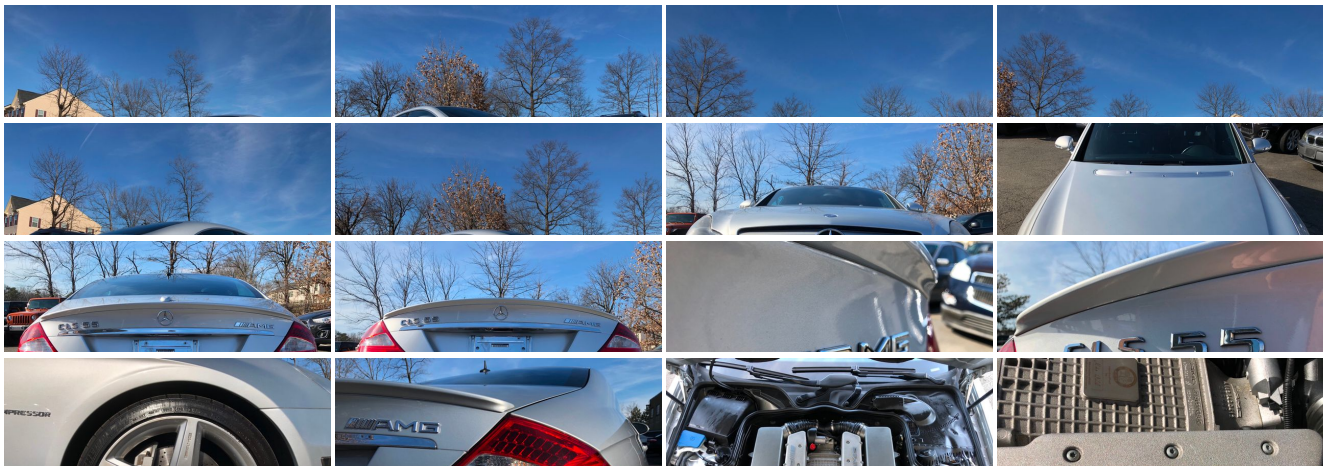
[571-313-1989](tel:571-313-1989)

9 Douglas Court Unit 101 , Sterling, VA 20166

Photos

Details

Contact





## Specifications:

<b>Year:</b>	2006
<b>VIN:</b>	WDDDJ76X76A034232
<b>Make:</b>	Mercedes-Benz
<b>Stock:</b>	034232
<b>Model/Trim:</b>	CLS55 AMG
<b>Condition:</b>	Pre-Owned
<b>Body:</b>	Sedan
<b>Exterior:</b>	SILVER
<b>Engine:</b>	5.5L SOHC SMPI 24-valve AMG-built supercharged V8 engine
<b>Interior:</b>	Black Leather
<b>Mileage:</b>	88,705
<b>Drivetrain:</b>	Rear Wheel Drive
<b>Economy:</b>	City 14 / Highway 20

## Vehicle Description

### Installed Options

#### Interior

- 10-way pwr adjustable heated front AMG-designed sport seats w/pneumatically adjustable lumbar support, drivers easy-exit courtesy seat folding adjustment, pwr height-adjusting front head restraints, 3-position memory
- AMG-design Nappa leather upholstery w/alcantara shoulder areas
- Hand-finished Matte burl walnut wood trim
- Full-length center console-inc: front/rear storage, wood-trimmed rolltop cover for rear storage, (4) cupholders, 12V pwr outlet in rear storage
- Velour carpeting & AMG floor mats
- AMG leather-trimmed sport steering wheel-inc: raised thumbgrips, fingertip shift controls, audio/multifunction display controls
- COMAND cockpit management/data system-inc: AM/FM/weatherband radio, in-dash CD-player, in-dash color-LCD screen, (10) soft keys
- Multifunction displays in speedometer face-inc: trip computer, Maintenance System, oil level check, digital speedometer, reminder/malfunction messages, driver-programmable settings, cruise control, tire pressure warning system audio status
- Pwr door locks w/drive away locking- Cruise control
- SmartKey system-inc: remote central locking system, anti-theft engine immobilizer, driver-programmable user-recognition features
- SmartKey infrared-remote-inc: opening trunk, opening/closing windows & sunroof, panic alarm, fuel filler door, lock/unlock all doors or drivers
- AM/FM/weatherband stereo w/CD player-inc: 7.1-channel amplifier, Harmon Kardon Logic7 digital surround system w/(12) speakers, Digital Dynamic Volume Control, fiber-optic communication among components
- Cargo area 12V pwr outlet in side panel- Alcantara headliner
- Stainless-steel door sill trim w/AMG insignia- Stainless-steel pedals w/rubber studs
- 4-way pwr tilt/telescoping steering column w/memory
- Mercedes-Benz Maintenance System Plus display-inc: distance remaining to next maintenance, type of service due, reminders
- Instrumentation-inc: fuel/coolant temp electronic bar-graph, digital touch shift/mode selection display, quartz clock
- AMG-design ivory-color gauges w/soft white backlighting
- Pwr windows w/express down/up
- Tele Aid global positioning system (GPS) satellite system-inc: stolen vehicle recovery, remote door unlock service, automatic alarm/collision notification
- Universal garage door opener- Anti-theft alarm system w/towaway protection
- Automatic quad-zone climate control-inc: dust/pollen filters, humidity/ dewpoint/sun sensors, rear-cabin temp controls, tunnel mode w/one touch closing of all windows
- Electrically heated rear window w/auto shut off based on time/exterior temp
- Illuminated glovebox- Storage pocket w/motorized wood-trimmed door

- Pockets in all doors- Seatback pockets- Front footwell parcel net
- Auto-dimming rearview mirror- Dual visors w/illuminated vanity mirrors
- Courtesy lights w/delay shutoff- Entrance lamps in all doors- Night security illumination
- Automatic environmental comfort lighting-inc: center console, door handles, all footwells, front/rear seating areas
- (4) reading lamps- Leather-trimmed AMG-designed shift knob
- Folding rear armrest w/enclosed storage

## Exterior

- Programmable daytime running lamps
- Pwr tilt/sliding tinted glass sunroof w/one-touch express open/close, memory
- AMG sculpted front apron w/mesh intake, side sills & rear apron
- Silver grille w/(3) chrome ribs
- Variable-focus halogen headlamps-inc: polycarbonate lenses, light-sensing auto-on headlamps, automatic lamp substitution
- Touch turn signals (flashes three times w/one touch)- Halogen front fog lamps
- Single red rear fog lamp
- Dual pwr folding heated mirrors-inc: reverse tilt down RH mirror, auto-dimming driver mirror, memory
- Blue-tinted glass
- Dual aero-blade windshield wipers w/infrared rain sensor, heated washer system

## Safety

- 10-way pwr adjustable heated front AMG-designed sport seats w/pneumatically adjustable lumbar support, drivers easy-exit courtesy seat folding adjustment, pwr height-adjusting front head restraints, 3-position memory
- AMG-design Nappa leather upholstery w/alcantara shoulder areas
- Hand-finished Matte burl walnut wood trim
- Full-length center console-inc: front/rear storage, wood-trimmed rolltop cover for rear storage, (4) cupholders, 12V pwr outlet in rear storage
- Velour carpeting & AMG floor mats
- AMG leather-trimmed sport steering wheel-inc: raised thumbgrips, fingertip shift controls, audio/multifunction display controls
- COMAND cockpit management/data system-inc: AM/FM/weatherband radio, in-dash CD-player, in-dash color-LCD screen, (10) soft keys
- Multifunction displays in speedometer face-inc: trip computer, Maintenance System, oil level check, digital speedometer, reminder/malfunction messages, driver-programmable settings, cruise control, tire pressure warning system audio status
- Pwr door locks w/drive away locking- Cruise control
- SmartKey system-inc: remote central locking system, anti-theft engine immobilizer, driver-programmable user-recognition features
- SmartKey infrared-remote-inc: opening trunk, opening/closing windows & sunroof, panic alarm, fuel filler door, lock/unlock all doors or drivers
- AM/FM/weatherband stereo w/CD player-inc: 7.1-channel amplifier, Harmon Kardon Logic7 digital surround system w/(12) speakers, Digital Dynamic Volume Control, fiber-optic communication among components
- Cargo area 12V pwr outlet in side panel - Alcantara headliner
- Stainless-steel door sill trim w/AMG insignia- Stainless-steel pedals w/rubber studs
- 4-way pwr tilt/telescoping steering column w/memory
- Mercedes-Benz Maintenance System Plus display-inc: distance remaining to next maintenance, type of service due, reminders
- Instrumentation-inc: fuel/coolant temp electronic bar-graph, digital touch shift/mode selection display, quartz clock
- AMG-design ivory-color gauges w/soft white backlighting
- Pwr windows w/express down/up
- Tele Aid global positioning system (GPS) satellite system-inc: stolen vehicle recovery, remote door unlock service, automatic alarm/collision notification
- Universal garage door opener- Anti-theft alarm system w/towaway protection
- Automatic quad-zone climate control-inc: dust/pollen filters, humidity/ dewpoint/sun sensors, rear-cabin temp controls, tunnel mode w/one touch closing of all windows
- Electrically heated rear window w/auto shut off based on time/exterior temp
- Illuminated glovebox- Storage pocket w/motorized wood-trimmed door
- Pockets in all doors- Seatback pockets- Front footwell parcel net
- Auto-dimming rearview mirror- Dual visors w/illuminated vanity mirrors
- Courtesy lights w/delay shutoff- Entrance lamps in all doors- Night security illumination
- Automatic environmental comfort lighting-inc: center console, door handles, all footwells, front/rear seating areas
- (4) reading lamps- Leather-trimmed AMG-designed shift knob
- Folding rear armrest w/enclosed storage

## Mechanical

- Electronic stability program (ESP)
- 19" x 8.5" front/19" x 9.5" rear AMG thin-spoke monoblock aluminum wheels
- Anti-lock brake system (ABS) w/brake assist system

- 5.5L SOHC SMPI 24-valve AMG-built supercharged V8 engine
- 5-speed automatic driver-adaptive transmission-inc: AMG SpeedShift, fingertip manual mode, Touch Shift, optimum gear programming, comfort mode
- Rear wheel drive- Independent 4-link front suspension w/anti-squat geometry
- Independent 5-arm multilink rear suspension-inc: aluminum links, wheel-hub carriers, anti-squat geometry, alignment control
- Front/rear enlarged stabilizer bar
- Airmatic dual control air suspension-inc: adaptive damping system (ADS II) electronically controlled pneumatic spring struts, integrated variable-rate shock absorbers, coil springs
- 255/35ZR19 front/285/30ZR19 rear high performance tires
- Vehicle-speed-sensitive pwr rack & pinion steering w/integrated hydraulic damper
- 8-piston perforated/ventilated front/4-piston perforated/ventilated rear pwr disc brakes
- Sensotronic brake control-inc: soft stop, automatic brake drying, predictive brake priming
- 21.1 gallon fuel tank- AMG dual exhaust system w/quad polished stainless-steel tips

Price excludes \$699.00 processing fee, registration fees and State and Local sales taxes. 3% surcharge will be added on all CC charges over \$500.00. Deposits are non-refundable. All our sales are based on first-come-first-serve policy. We work very hard to accurately describe our vehicles through text descriptions and elaborate photos. When you purchase a pre-owned vehicle it is not a new vehicle. Any used vehicle can have normal wear and blemishes. Please read the descriptions thoroughly and view all pictures.

Sterling Motorsport

Sterling Motorsport

View this car on our website at [sterlingmotorsport.com/6588198](http://sterlingmotorsport.com/6588198)

Website: [sterlingmotorsport.com](http://sterlingmotorsport.com)

Phone: [571-313-1989](tel:571-313-1989)

Map: [9 Douglas Court Unit 101, Sterling, VA 20166](#)

