



2019 Chevrolet Trax LT

Our Price \$19,001

View this vehicle on our website at parksdeals.com

Parks Chevrolet, Inc.

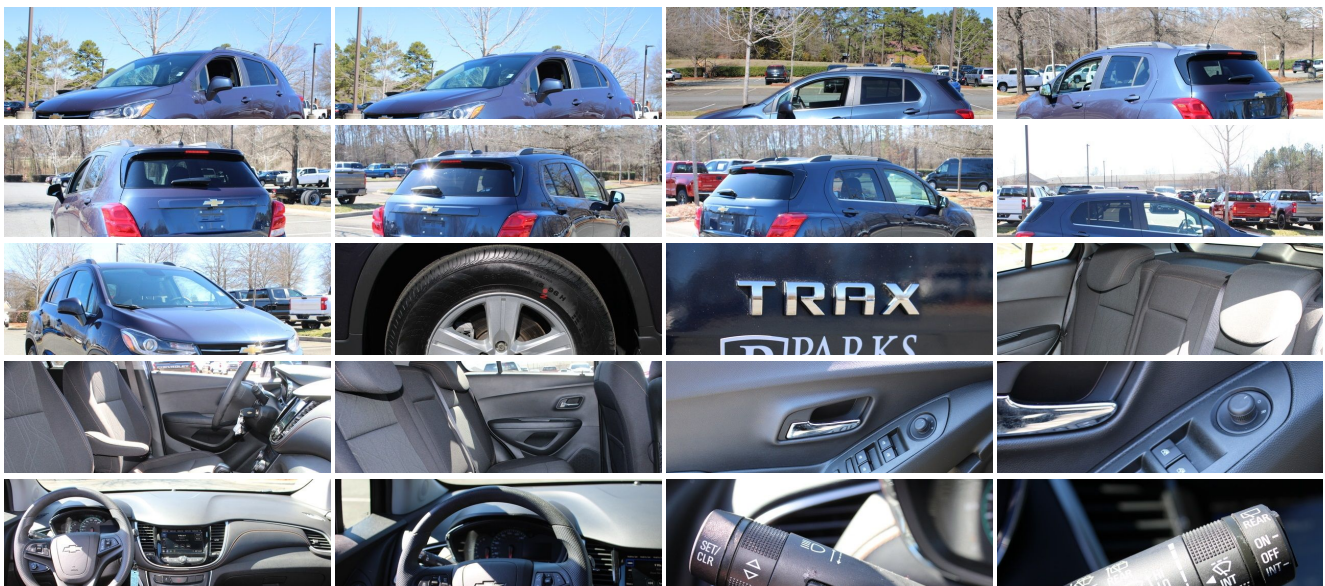
[833-825-2763](tel:833-825-2763)

615 NC-66 South, Kernersville, NC 27284

[Photos](#)

[Details](#)

[Contact](#)



Specifications:

Year:	2019
VIN:	3GNCJLSBXKL282669
Make:	Chevrolet
Stock:	100743A
Model/Trim:	Trax LT
Condition:	Pre-Owned
Body:	SUV
Exterior:	Blue Metallic
Engine:	ENGINE, ECOTEC TURBO 1.4L VARIABLE VALVE TIMING DOHC 4-CYLINDER SEQUENTIAL MFI
Interior:	Jet Black Cloth
Mileage:	61,464
Drivetrain:	Front Wheel Drive
Economy:	City 26 / Highway 31

Vehicle Description

NEW CAR TRADE IN!! WONT LAST LONG!! 2019 Chevrolet Trax LT 1- OWNER, 3 Month/ 3,000 mile warranty, Bluetooth, CARFAX Clean Vehicle History, CARFAX One-Owner, Preferred Equipment Group 1LT, USB ports, We Deliver. CARFAX One-Owner. Clean CARFAX.

\$1000 - Dealer Trade-in Allowance (Must own and trade a 2015 or newer passenger vehicle to qualify for the Dealer Trade-in Allowance), Allowance is \$1000 above True Car Cash Offer. This offer is based on the current condition of the vehicle and must be appraised at the Dealership to receive the Trade-In Allowance. \$1000 is reflected in the vehicle discount. \$1000 - Dealer Finance Discount (Must qualify and finance with GM Financial, not available with special financing rates or programs.) You may or may not qualify for all rebates. Price does not include tax, tag, and fees. Price does not include any aftermarket products, bodies, or upfits. Price includes applicable rebates: Contact us online at www.parkschevrolethuntersville.com or give us a call at (704) 875-6558 to have your questions answered, obtain a price quote for this vehicle, or schedule your test drive today. Our prices cannot be beat! Come visit us at 15235 STATESVILLE ROAD HUNTERSVILLE NC 28078.

Installed Options

Interior

- Seats, front bucket with driver power lumbar - Seat trim, Deluxe cloth
- Seat, rear 60/40 split-bench, folding
- Floor mats, color-keyed and carpeted front and rear - Door locks, power programmable
- Remote Keyless Entry with panic alarm- Seat adjuster, driver 4-way manual
- Seat adjuster, front passenger 2-way manual - Seatback, front passenger flat-folding
- Map pocket, driver seatback- Head restraints, 2-way adjustable (up/down), front
- Armrest, driver seat- Steering column, manual tilt and telescoping
- Steering wheel, 3-spoke, urethane
- Steering wheel controls, mounted audio and phone interface controls
- Instrumentation with analog speedometer and tachometer
- Driver Information Center 3.5" monochrome display with True White back lighting and digital readouts, including speedometer, odometer, trip odometer and fuel gauge
- Speedometer, miles/kilometers
- Compass display located in the Driver Information Center
- Remote vehicle starter system- Keys, (2) foldable
- Windows, power with driver Express-Up/Down and front passenger and rear Express-Down
- Cruise control, electronic, automatic- Theft-deterrent system, unauthorized entry
- Air conditioning, single-zone manual- Air filter, particle- Heater duct, rear, floor
- Defogger, rear-window, electric
- Cup holders, 4 in front console and 2 in rear center armrest
- Power outlet, auxiliary, 12-volt- Power outlet, 110-volt, located on rear of center console
- Storage drawer, front passenger underseat- Mirror, inside rearview manual day/night
- Visors, driver and front passenger vanity mirrors, covered
- Assist handles, driver, front passenger and rear outboard includes coat hooks on rear handles
- Lighting, interior with front reading lights and dome light
- Shift knob, satin silver and chrome - Cargo security cover, rigid, removable
- Cargo storage, tray under rear floor- Cargo tie downs, 4- Lighting, cargo area

Exterior

- Wheels, 16" (40.6 cm) aluminum- Tires, P205/70R16 all-season, blackwall

Option Packages

Factory Installed Packages

ENGINE, ECOTEC TURBO 1.4L VARIABLE VALVE TIMING
DOHC 4-CYLINDER SEQUENTIAL MFI
(138 hp [102.9 kW] @ 4900 rpm, 148 lb-ft of
torque [199.8 N-m] @ 1850 rpm)

- Wheel, spare, 16" (40.6 cm) steel- Tire, compact spare
- Luggage rack, side rails, roof-mounted- Moldings, beltline side glass (Chrome.)
- Headlamps, halogen projector type with automatic on/off
- Tail lamps, sculpted with LED accent
- Mirrors, outside heated power-adjustable, body-color, manual-folding
- Windshield, solar absorbing- Windshield, acoustic laminated
- Glass, deep-tinted, rear windows and liftgate- Wipers, front intermittent
- Wiper, rear intermittent- Door handles, body-color- Liftgate, rear applique, body-color

Safety

- Seats, front bucket with driver power lumbar - Seat trim, Deluxe cloth
- Seat, rear 60/40 split-bench, folding
- Floor mats, color-keyed and carpeted front and rear - Door locks, power programmable
- Remote Keyless Entry with panic alarm- Seat adjuster, driver 4-way manual
- Seat adjuster, front passenger 2-way manual- Seatback, front passenger flat-folding
- Map pocket, driver seatback- Head restraints, 2-way adjustable (up/down), front
- Armrest, driver seat- Steering column, manual tilt and telescoping
- Steering wheel, 3-spoke, urethane
- Steering wheel controls, mounted audio and phone interface controls
- Instrumentation with analog speedometer and tachometer
- Driver Information Center 3.5" monochrome display with True White back lighting and digital readouts, including speedometer, odometer, trip odometer and fuel gauge
- Speedometer, miles/kilometers
- Compass display located in the Driver Information Center
- Remote vehicle starter system- Keys, (2) foldable
- Windows, power with driver Express-Up/Down and front passenger and rear Express-Down
- Cruise control, electronic, automatic- Theft-deterrent system, unauthorized entry
- Air conditioning, single-zone manual- Air filter, particle- Heater duct, rear, floor
- Defogger, rear-window, electric
- Cup holders, 4 in front console and 2 in rear center armrest
- Power outlet, auxiliary, 12-volt- Power outlet, 110-volt, located on rear of center console
- Storage drawer, front passenger underseat- Mirror, inside rearview manual day/night
- Visors, driver and front passenger vanity mirrors, covered
- Assist handles, driver, front passenger and rear outboard includes coat hooks on rear handles
- Lighting, interior with front reading lights and dome light
- Shift knob, satin silver and chrome - Cargo security cover, rigid, removable
- Cargo storage, tray under rear floor- Cargo tie downs, 4- Lighting, cargo area

Mechanical

- Transmission, 6-speed automatic
- Engine, ECOTEC Turbo 1.4L Variable Valve Timing DOHC 4-cylinder sequential MFI (138 hp [102.9 kW] @ 4900 rpm, 148 lb-ft of torque [199.8 N-m] @ 1850 rpm)
- Axle, 3.53 final drive ratio- Chassis, front-wheel drive- Battery, 60AH
- Alternator, 130 amps- Skid plate, front and rear fascia, silver-painted
- Suspension, Ride and Handling- Steering, power, non-variable ratio, electric
- Brakes, 4-wheel antilock, front disc/rear drum- Mechanical jack with tools

Parks Chevrolet, Inc.

Parks Chevrolet, Inc.

View this car on our website at parksdeals.com/6586014

Website: parksdeals.com

Phone: [833-825-2763](tel:833-825-2763)

Map: [615 NC-66 South, Kenersville, NC 27284](#)

