

parksdeals.com  
833-825-2763  
615 NC-66 South  
Kernersville, NC  
27284

Parks Chevrolet,  
Inc.

## 2019 Chevrolet Silverado 1500 LT

View this car on our website at [parksdeals.com/6585791/ebrochure](https://parksdeals.com/6585791/ebrochure)



Our Price **\$36,999**

Retail Value **\$50,530**

**Specifications:**

**Year:** 2019  
**VIN:** 1GCUYDEDXKZ104152  
**Make:** Chevrolet  
**Stock:** 104152P  
**Model/Trim:** Silverado 1500 LT  
**Condition:** New  
**Body:** Pickup Truck  
**Exterior:** Summit White  
**Engine:** ENGINE, 5.3L ECOTEC3 V8  
**Interior:** Black Cloth  
**Mileage:** 0  
**Drivetrain:** 4 Wheel Drive  
**Economy:** City 16 / Highway 22

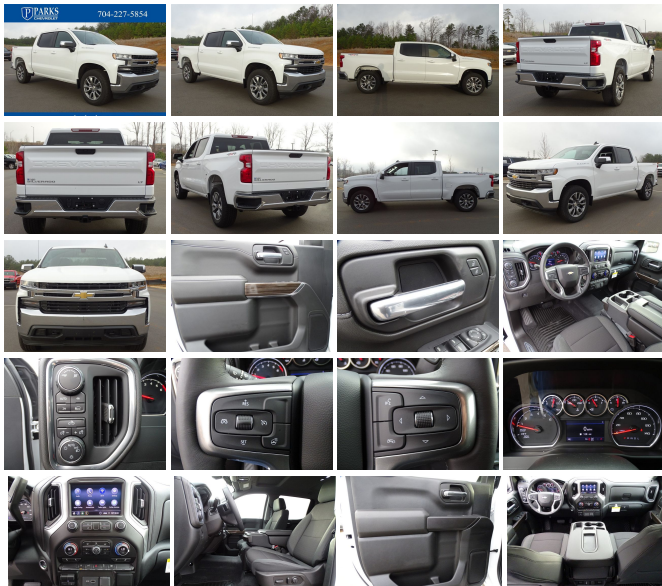
2019 Chevrolet Silverado 1500 LT Summit White EcoTec3 5.3L V8 4WD 8-Speed Automatic

Silverado 1500 LT, 4D Crew Cab, EcoTec3 5.3L V8, 8-Speed Automatic, 4WD, Summit White, Black Cloth.

Contact us online at [www.parkscharlotte.com](http://www.parkscharlotte.com) or give us a call at (704) 288-0662 to have your questions answered, obtain a price quote for this vehicle, or schedule your test drive today. Our prices cannot be beat! Come visit us at 8530 IKEA BLVD CHARLOTTE NC. Price excludes administrative, origination, documentary, procurement and/or other administrative fee. You may or may not qualify for all rebates. Price does not include tax, tag, and fees. Price does not include any aftermarket products, bodies, or upfits. Price includes applicable rebates: \$2,000 - Silverado/Sierra 1500 w/PDU Incremental Consumer Cash. Exp. 10/31/2019, \$2,500 - GM Consumer Cash Program. Exp. 10/31/2019, \$250 - GM Extended Family Card and Buypower Card Bonus Cash Offer. Exp. 10/31/2019, \$1,000 - Chevrolet Bonus Cash Program. Exp. 10/31/2019 \$1000- Dealer Trade In Discount Exp. 10/31/2019

(Must own and trade a 2015 or newer passenger vehicle to qualify for Dealer Trade In Discount) \$1000 Dealer Finance Assistance - Exp. 10/31/2019

(Must qualify and finance through the dealership to qualify for the \$1000 Finance Discount) Some customers may not qualify. Take new retail delivery by 10/31/19. See dealer for details. \$2000- GM Lease Loyalty Exp. 10/31/2019, ELIGIBLE CUSTOMERS WHO HAVE A CURRENT BUICK, CADILLAC, CHEVROLET OR GMC LEASE THROUGH GM FINANCIAL QUALIFY FOR THIS OFFER.



2019 Chevrolet Silverado 1500 LT

Parks Chevrolet, Inc. - 833-825-2763 - View this car on our website at [parksdeals.com/6585791/ebrochure](http://parksdeals.com/6585791/ebrochure)

## Our Location :



2019 Chevrolet Silverado 1500 LT

Parks Chevrolet, Inc. - 833-825-2763 - View this car on our website at [parksdeals.com/6585791/ebrochure](https://parksdeals.com/6585791/ebrochure)

## Installed Options

### Interior

- Seats, front 40/20/40 split-bench with covered armrest storage (Not available with (PCL) Convenience Package.)
- Seat trim, Cloth- Seat adjuster, driver 4-way manual
- Seat adjuster, passenger 4-way manual
- Seat, rear 60/40 folding bench (folds up), 3-passenger (includes child seat top tether anchor)
- Floor covering, color-keyed carpeting
- Floor mats, rubberized vinyl, front (Deleted when LPO floor liners are ordered.)
- Floor mats, rubberized vinyl rear (Deleted when LPO floor liners are ordered.)
- Steering wheel, urethane- Steering wheel audio controls
- Steering column, Tilt-Wheel, manual with wheel locking security feature
- Instrument cluster, 6-gauge cluster featuring speedometer, fuel level, engine temperature, tachometer, voltage and oil pressure
- Driver Information Center, 4.2" diagonal color display includes driver personalization
- Exterior Temperature Display located in radio display
- Compass located in instrument cluster- Rear Seat Reminder
- Window, power front, drivers express up/down
- Window, power front, passenger express down- Windows, power rear, express down
- Door locks, power- Remote Keyless Entry, with 2 transmitters
- Cruise control, electronic with set and resume speed, steering wheel-mounted
- Air conditioning, single-zone manual, semi-automatic- Air vents, rear, heating/cooling
- Power outlet, front auxiliary, 12-volt- Mirror, inside rearview, manual tilt
- Assist handles front A-pillar mounted for driver and passenger, rear B-pillar mounted

### Exterior

- Wheels, 17" x 8" (43.2 cm x 20.3 cm) Bright Silver painted aluminum
- Tires, 255/70R17 all-season, blackwall
- Tire, spare 255/70R17 all-season, blackwall (Included with (QBN) 255/70R17 all-season, blackwall tires.)

- Tire carrier lock, keyed cylinder lock that utilizes same key as ignition and door
- Bumper, front chrome- Bumper, rear chrome- CornerStep, rear bumper
- Recovery hooks, front, frame-mounted, black (Included with 4WD models only.)
- Cargo tie downs (12), fixed rated at 500 lbs per corner
- Grille (Chrome bars with high gloss Black mesh inserts.)
- Headlamps, LED reflector with LED signature Daytime Running Lamps
- Lamps, cargo area, cab mounted integrated with center high mount stop lamp, with switch on center switch bank
- Taillamps, with incandescent tail, stop and reverse lights
- Mirrors, outside heated power-adjustable (Includes driver's spotter mirror. When (PQB) Safety Package is ordered, includes Perimeter Lighting.)
- Mirror caps, chrome- Glass, deep-tinted- Door handles, body-color
- Tailgate and bed rail protection cap, top
- Tailgate, locking utilizes same key as ignition and door (Upgraded to (QT5) EZ Lift power lock and release tailgate when (PCL) Convenience Package is ordered.)
- Tailgate, gate function manual with lift assist

## Safety

- Seats, front 40/20/40 split-bench with covered armrest storage (Not available with (PCL) Convenience Package.)
- Seat trim, Cloth- Seat adjuster, driver 4-way manual
- Seat adjuster, passenger 4-way manual
- Seat, rear 60/40 folding bench (folds up), 3-passenger (includes child seat top tether anchor)
- Floor covering, color-keyed carpeting
- Floor mats, rubberized vinyl, front (Deleted when LPO floor liners are ordered.)
- Floor mats, rubberized vinyl rear (Deleted when LPO floor liners are ordered.)
- Steering wheel, urethane- Steering wheel audio controls
- Steering column, Tilt-Wheel, manual with wheel locking security feature
- Instrument cluster, 6-gauge cluster featuring speedometer, fuel level, engine temperature, tachometer, voltage and oil pressure
- Driver Information Center, 4.2" diagonal color display includes driver personalization
- Exterior Temperature Display located in radio display
- Compass located in instrument cluster- Rear Seat Reminder
- Window, power front, drivers express up/down
- Window, power front, passenger express down- Windows, power rear, express down
- Door locks, power- Remote Keyless Entry, with 2 transmitters
- Cruise control, electronic with set and resume speed, steering wheel-mounted
- Air conditioning, single-zone manual, semi-automatic- Air vents, rear, heating/cooling
- Power outlet, front auxiliary, 12-volt- Mirror, inside rearview, manual tilt
- Assist handles front A-pillar mounted for driver and passenger, rear B-pillar mounted

## Mechanical

- Engine, 2.7L Turbo (310 hp [231 kW] @ 5600 rpm, 348 lb-ft of torque [471 Nm] @ 1500 rpm) (Not available with (Z71) Z71 Off-Road Package.)
- Transmission, 8-speed automatic, electronically controlled with overdrive and tow/haul mode. Includes Cruise Grade Braking and Powertrain Grade Braking
- Rear axle, 3.42 ratio (Included with (L84) 5.3L EcoTec3 V8 engine and (NHT) Max Trailering Package.)
- Durabed, pickup bed
- GVWR, 7000 lbs. (3175 kg) (Requires Crew Cab or Double Cab 4WD model and (L3B) 2.7L Turbo engine.)
- Automatic Stop/Start
- Transfer case, single speed electronic Autotrac with rotary dial control (4WD models only)
- Four wheel drive
- Battery, heavy-duty 730 cold-cranking amps/80 Amp-hr, maintenance-free with rundown protection and retained accessory power
- Alternator, 220 amps (Included and only available with (L3B) 2.7L Turbo engine, (VYU) Snow Plow Prep Package or (NHT) Max Trailering Package.)
- Frame, fully-boxed, hydroformed front section
- Steering, Electric Power Steering (EPS) assist, rack-and-pinion
- Brakes, 4-wheel antilock, 4-wheel disc with DURALIFE rotors- Brake lining wear indicator
- Capless Fuel Fill- Exhaust, single outlet

## Option Packages

### Factory Installed Packages

ENGINE, 5.3L ECOTEC3 V8  
 (355 hp [265 kW] @ 5600 rpm, 355 lb-ft of torque [480 Nm] @ 2500 rpm) \$1,395

383 lb-ft of torque [518 Nm] @  
4100 rpm); featuring all-new  
Dynamic Fuel Management  
that enables the engine to  
operate in 17 different patterns  
between 2 and 8 cylinders,  
depending on demand, to  
optimize power delivery and  
efficiency

---

Option Packages Total  
\$1,395

---

Parks Chevrolet, Inc.

[parksdeals.com](http://parksdeals.com)

833-825-2763

615 NC-66 South

Kernersville, NC 27284

© 2019 AutoRevo - All rights reserved. - Powered by AutoRevo