

parksdeals.com
833-825-2763
615 NC-66 South
Kernersville, NC
27284

Parks Chevrolet,
Inc.

2019 Chevrolet Silverado 1500 RST

View this car on our website at parksdeals.com/6585672/ebrochure



Our Price **\$34,749**

Retail Value **\$49,630**

Specifications:

Year: 2019
VIN: 1GCRYEED1KZ208427
Make: Chevrolet
Stock: 208427
Model/Trim: Silverado 1500 RST
Condition: New
Body: Pickup Truck
Exterior: Summit White
Engine: ENGINE, 5.3L ECOTEC3 V8
Interior: Black Leather
Mileage: 0
Drivetrain: 4 Wheel Drive
Economy: City 16 / Highway 22

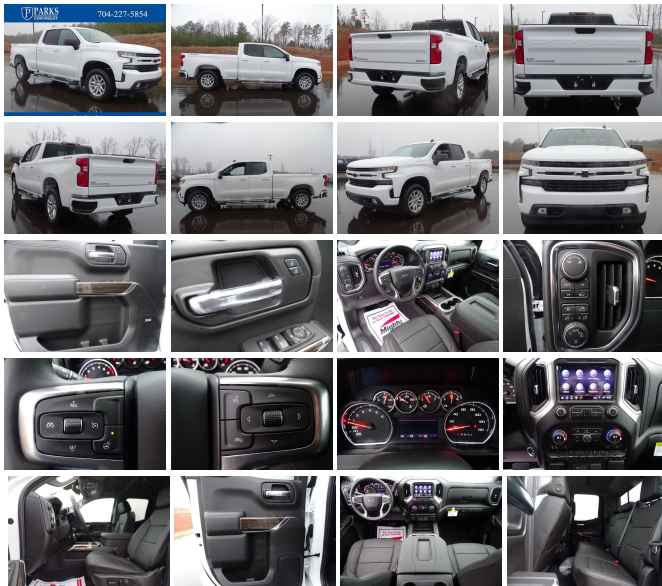
2019 Chevrolet Silverado 1500 RST Summit White EcoTec3 5.3L V8 4WD 8-Speed Automatic

Silverado 1500 RST, Double Cab, EcoTec3 5.3L V8, 8-Speed Automatic, 4WD, Summit White, Black Leather.

Contact us online at www.parkscharlotte.com or give us a call at (704) 288-0662 to have your questions answered, obtain a price quote for this vehicle, or schedule your test drive today. Our prices cannot be beat! Come visit us at 8530 IKEA BLVD CHARLOTTE NC. Price excludes administrative, origination, documentary, procurement and/or other administrative fee. You may or may not qualify for all rebates. Price does not include tax, tag, and fees. Price does not include any aftermarket products, bodies, or upfits. Price includes applicable rebates: \$2,000 - Silverado/Sierra 1500 w/PDU Incremental Consumer Cash. Exp. 10/31/2019, \$2,000 - GM Consumer Cash Program. Exp. 10/31/2019, \$250 - GM Extended Family Card and Buypower Card Bonus Cash Offer. Exp. 10/31/2019, \$750 - Chevrolet Bonus Cash Program. Exp. 10/31/2019 \$1000- Dealer Trade In Discount Exp. 10/31/2019

(Must own and trade a 2015 or newer passenger vehicle to qualify for Dealer Trade In Discount) \$1000 Dealer Finance Assistance - Exp. 10/31/2019

(Must qualify and finance through the dealership to qualify for the \$1000 Finance Discount) Some customers may not qualify. Take new retail delivery by 10/31/19. See dealer for details. \$2000- GM Lease Loyalty Exp. 10/31/2019, ELIGIBLE CUSTOMERS WHO HAVE A CURRENT BUICK, CADILLAC, CHEVROLET OR GMC LEASE THROUGH GM FINANCIAL QUALIFY FOR THIS OFFER.



2019 Chevrolet Silverado 1500 RST

Parks Chevrolet, Inc. - 833-825-2763 - View this car on our website at parksdeals.com/6585672/ebrochure

Our Location :



2019 Chevrolet Silverado 1500 RST

Parks Chevrolet, Inc. - 833-825-2763 - View this car on our website at parksdeals.com/6585672/ebrochure

Installed Options

Interior

- Seats, front 40/20/40 split-bench with covered armrest storage and under-seat storage (lockable) (Not available with (PCH) Convenience Package with Bucket Seats.)
- Seat trim, Cloth- Seat adjuster, driver 4-way manual
- Seat adjuster, passenger 4-way manual
- Seat, rear 60/40 folding bench (folds up), 3-passenger (includes child seat top tether anchor)
- Floor covering, color-keyed carpeting
- Floor mats, rubberized vinyl, front (Deleted when LPO floor liners are ordered.)
- Floor mats, rubberized vinyl rear (Deleted when LPO floor liners are ordered.)
- Steering wheel, urethane- Steering wheel audio controls
- Steering column, Tilt-Wheel, manual with wheel locking security feature
- Steering column, lock control, electrical
- Instrument cluster, 6-gauge cluster featuring speedometer, fuel level, engine temperature, tachometer, voltage and oil pressure
- Driver Information Center, 4.2" diagonal color display includes driver personalization
- Exterior Temperature Display located in radio display
- Compass located in instrument cluster- Rear Seat Reminder
- Window, power front, drivers express up/down
- Window, power front, passenger express down- Windows, power rear, express down
- Door locks, power- Remote vehicle starter system- Keyless Open and Start
- Cruise control, electronic with set and resume speed, steering wheel-mounted
- Theft-deterrent system, unauthorized entry
- Air conditioning, single-zone manual, semi-automatic- Air vents, rear, heating/cooling
- Defogger, rear-window electric- Power outlet, front auxiliary, 12-volt
- Mirror, inside rearview, manual tilt
- Assist handles front A-pillar mounted for driver and passenger, rear B-pillar mounted
- Power outlet, rear auxiliary, 12-volt- USB ports, dual, charge-only (2nd row)

Exterior

- Wheels, 18" x 8.5" (45.7 cm x 21.6 cm) Bright Silver painted aluminum
- Tires, 265/65R18SL all-season, blackwall
- Wheel, 17" x 8" (43.2 cm x 20.3 cm) full-size, steel spare
- Tire, spare 265/70R17SL all-season, blackwall
- Tire carrier lock, keyed cylinder lock that utilizes same key as ignition and door
- Bumper, front (Body-color.)- Bumper, rear (Body-color.)- CornerStep, rear bumper
- Recovery hooks, front, frame-mounted, black
- Cargo tie downs (12), fixed rated at 500 lbs per corner
- Grille (Body color bars with high gloss Black mesh inserts.) - Black Bowtie, (front grille)
- Headlamps, LED reflector with LED signature Daytime Running Lamps
- Fog lamps, front, LED
- Lamps, cargo area, cab mounted integrated with center high mount stop lamp, with switch on center switch bank
- LED Cargo Area Lighting located in pickup bed, activated with switch on center switch bank or key fob
- Taillamps, LED with signature
- Mirrors, outside heated power-adjustable (Includes driver's spotter mirror. When (PQB) Safety Package is ordered, includes Perimeter Lighting.)
- Mirror caps, painted (High gloss Black.)- Glass, deep-tinted- Door handles, body-color
- Tailgate and bed rail protection cap, top
- Tailgate, gate function manual with EZ Lift, includes power lock and release

Safety

- Seats, front 40/20/40 split-bench with covered armrest storage and under-seat storage (lockable) (Not available with (PCH) Convenience Package with Bucket Seats.)
- Seat trim, Cloth- Seat adjuster, driver 4-way manual
- Seat adjuster, passenger 4-way manual
- Seat, rear 60/40 folding bench (folds up), 3-passenger (includes child seat top tether anchor)
- Floor covering, color-keyed carpeting
- Floor mats, rubberized vinyl, front (Deleted when LPO floor liners are ordered.)
- Floor mats, rubberized vinyl rear (Deleted when LPO floor liners are ordered.)
- Steering wheel, urethane- Steering wheel audio controls
- Steering column, Tilt-Wheel, manual with wheel locking security feature
- Steering column, lock control, electrical
- Instrument cluster, 6-gauge cluster featuring speedometer, fuel level, engine temperature, tachometer, voltage and oil pressure
- Driver Information Center, 4.2" diagonal color display includes driver personalization
- Exterior Temperature Display located in radio display
- Compass located in instrument cluster- Rear Seat Reminder
- Window, power front, drivers express up/down
- Window, power front, passenger express down- Windows, power rear, express down
- Door locks, power- Remote vehicle starter system- Keyless Open and Start
- Cruise control, electronic with set and resume speed, steering wheel-mounted
- Theft-deterrent system, unauthorized entry
- Air conditioning, single-zone manual, semi-automatic- Air vents, rear, heating/cooling
- Defogger, rear-window electric- Power outlet, front auxiliary, 12-volt
- Mirror, inside rearview, manual tilt
- Assist handles front A-pillar mounted for driver and passenger, rear B-pillar mounted
- Power outlet, rear auxiliary, 12-volt- USB ports, dual, charge-only (2nd row)

Mechanical

- Engine, 2.7L Turbo (310 hp [231 kW] @ 5600 rpm, 348 lb-ft of torque [471 Nm] @ 1500 rpm) (Not available with (Z71) Z71 Off-Road Package.)
- Transmission, 8-speed automatic, electronically controlled with overdrive and tow/haul mode. Includes Cruise Grade Braking and Powertrain Grade Braking
- Rear axle, 3.42 ratio (Included with (L84) 5.3L EcoTec3 V8 engine and (NHT) Max Trailering Package.)
- Durabed, pickup bed
- GVWR, 7000 lbs. (3175 kg) (Requires Crew Cab or Double Cab 4WD model and (L3B) 2.7L Turbo engine. Requires Double Cab 4WD model with (L84) 5.3L EcoTec3 V8 engine without (NHT) Max Trailering Package.)
- Automatic Stop/Start
- Transfer case, single speed electronic Autotrac with rotary dial control (4WD models only)
- Four wheel drive
- Battery, heavy-duty 730 cold-cranking amps/80 Amp-hr, maintenance-free with rundown protection and retained accessory power
- Alternator, 220 amps (Included and only available with (L3B) 2.7L Turbo engine or (NHT) Max Trailering Package.)
- Frame, fully-boxed, hydroformed front section
- Steering, Electric Power Steering (EPS) assist, rack-and-pinion
- Brakes, 4-wheel antilock, 4-wheel disc with DURALIFE rotors- Brake lining wear indicator

- Capless Fuel Fill Exhaust, single outlet

Option Packages

Factory Installed Packages

-

ENGINE, 5.3L ECOTEC3 V8 (355 hp [265 kW] @ 5600 rpm, 383 lb-ft of torque [518 Nm] @ 4100 rpm); featuring all-new Dynamic Fuel Management that enables the engine to operate in 17 different patterns between 2 and 8 cylinders, depending on demand, to optimize power delivery and efficiency	\$1,395
--	---------

-

Option Packages Total	\$1,395
-----------------------	---------

Parks Chevrolet, Inc.

parksdeals.com

833-825-2763

615 NC-66 South

Kernersville, NC 27284

© 2019 AutoRevo - All rights reserved. - Powered by AutoRevo