

2016 Volkswagen Golf GTI S 6 SPD, BACK-UP CAM, HTD CLOTH, 25K, WE FINANCE

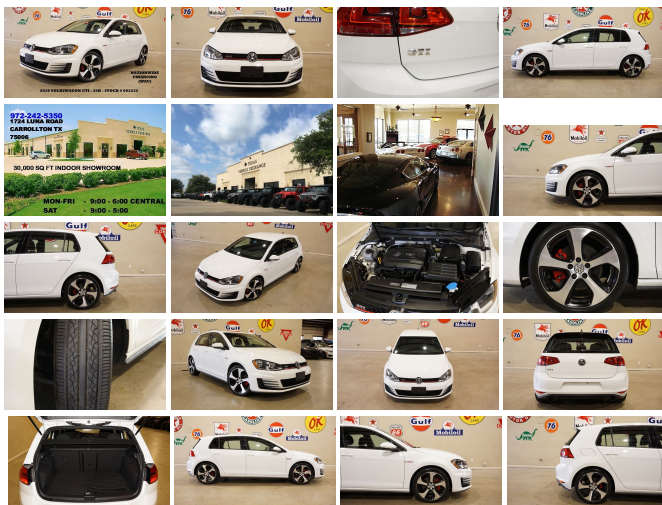
View this car on our website at tveauto.com/6580824/ebrochure



Our Price **\$19,900**

Specifications:

Year:	2016
VIN:	3VV5T7AU2GM002232
Make:	Volkswagen
Stock:	002232
Model/Trim:	Golf GTI S 6 SPD, BACK-UP CAM, HTD CLOTH, 25K, WE FINANCE
Condition:	Pre-Owned
Body:	Sedan
Exterior:	Pure White
Engine:	Engine: 2.0L TSI I-4 DOHC 16-Valve Turbocharged
Interior:	Titan Black w/Clark Plaid Cloth
Mileage:	25,163
Drivetrain:	Front Wheel Drive
Economy:	City 25 / Highway 34



NATION WIDE FINANCING

SUBMIT CREDIT APP WWW.TVEAUTO.COM

OR CALL 972-242-5350

2016 VOLKSWAGEN GOLF GTI S FWD, 2.0L TURBOCHARGED I4 ENGINE, 6 SPEED MANUAL TRANSMISSION, ONLY 25K, PURE WHITE W/BLACK CLOTH INTERIOR, CARFAX REPORTS 2 OWNERS NO ACCIDENTS, APPEARS TO BE A NON-SMOKER, BACK-UP CAMERA, POWER WINDOWS, POWER DOOR LOCKS, POWER HEATED MIRRORS WITH TURN SIGNALS, TILT/TELESCOPE STEERING WHEEL WITH AUDIO & CRUISE CONTROLS, HEATED FRONT BUCKET SEATS WITH POWER RECLINE. DRIVING MODE BUTTON.

TRACTION CONTROL, ICE COLD A/C, HD AM/FM/SIRIUS STEREO WITH CD PLAYER, BLUETOOTH, DUAL LIGHTED VANITY MIRRORS, REAR A/C VENTS, CARGO COVER, FLOOR MATS, OWNER'S MANUAL, 2 KEYS/2 REMOTES. 18 IN ALLOY WHEELS, FRONT TIRES ARE HANKOOK 225/40R/18 WITH APPROX 90% TREAD LIFE REMAINING, REAR TIRES ARE HANKOOK 225/40R/18 WITH APPROX 90% TREAD LIFE REMAINING. RUNS AND DRIVES GREAT. GIVE US A CALL @ 972-242-5350 OR STOP BY FOR A TEST DRIVE. 1724 LUNA RD IN CARROLLTON - 2 MILES NORTH OF 635. CLICK ON CARFAX ICON TO VIEW A FULL REPORT AT NO COST TO YOU.

2016 Volkswagen Golf GTI S 6 SPD, BACK-UP CAM, HTD CLOTH, 25K, WE FINANCE
 Texas Vehicle Exchange - 972-242-5350 - View this car on our website at tveauto.com/6580824/ebrochure

Vehicle History Report : as Of 02/21/2019

Snapshot

2016 VOLKSWAGEN GTI S/SE/AUTOBAHN

	No accidents reported to CARFAX
	No damage reported to CARFAX
	2 Previous owners
	4 Service history records
	Types of owners: Personal lease, Personal
	22,130 Last reported odometer reading

FREE CARFAX Report

See the full CARFAX Report for additional information

*carfax Snapshot is a reflection of available information on the date the report was pulled. carfax is constantly being updated with new information and is subject to change at any time.

Our Location :

Map data ©2019 Google

2016 Volkswagen Golf GTI S 6 SPD, BACK-UP CAM, HTD CLOTH, 25K, WE FINANCE
 Texas Vehicle Exchange - 972-242-5350 - View this car on our website at tveauto.com/6580824/ebrochure

Installed Options

Interior

- 2 12V DC Power Outlets- 2 Seatback Storage Pockets
- 60-40 Folding Bench Front Facing Fold Forward Seatback Rear Seat - Air Filtration
- Analog Display- Cargo Area Concealed Storage- Cargo Space Lights- Carpet Floor Trim
- Cloth Door Trim Insert- Cloth Seating Surfaces- Compass
- Cruise Control w/Steering Wheel Controls- Day-Night Rearview Mirror
- Delayed Accessory Power
- Driver And Passenger Visor Vanity Mirrors w/Driver And Passenger Illumination
- Driver Foot Rest- Driver Seat- FOB Controls -inc: Trunk/Hatch/Tailgate
- Fade-To-Off Interior Lighting- Front And Rear Map Lights
- Front Center Armrest and Rear Center Armrest w/Pass-Thru w/Storage- Front Cupholder
- Full Carpet Floor Covering -inc: Carpet Front And Rear Floor Mats - Full Cloth Headliner
- Full Floor Console w/Covered Storage, Mini Overhead Console w/Storage and 2 12V DC Power Outlets
- Gauges -inc: Speedometer, Odometer, Engine Coolant Temp, Tachometer, Trip Odometer and Trip Computer
- HVAC -inc: Underseat Ducts and Console Ducts
- Heated Top Sport Front Seats -inc: manually adjustable front seats w/power recline and adjustable lumbar support
- Illuminated Locking Glove Box- Immobilizer III Engine Immobilizer
- Instrument Panel Covered Bin, Refrigerated/Cooled Box Located In The Glovebox, Driver / Passenger And Rear Door Bins
- Interior Trim -inc: Piano Black Instrument Panel Insert, Piano Black Door Panel Insert and Chrome/Aluminum Interior Accents
- Leather/Aluminum Gear Shift Knob- Manual Air Conditioning
- Manual Anti-Whiplash Adjustable Front Head Restraints and Manual Adjustable Rear Head Restraints
- Manual Tilt/Telescoping Steering Column- Outside Temp Gauge- Passenger Seat
- Perimeter Alarm- Power 1st Row Windows w/Front And Rear 1-Touch Up/Down
- Power Door Locks w/Autolock Feature- Power Fuel Flap Locking Type
- Power Rear Windows- Rear Cupholder- Redundant Digital Speedometer
- Remote Keyless Entry w/Integrated Key Transmitter, Illuminated Entry and Panic Button
- Remote Releases -Inc: Power Fuel- Rigid Cargo Cover- Seats w/Cloth Back Material
- Smart Device Integration- Sport Leather Steering Wheel- Systems Monitor
- Trip Computer- Valet Function- Vw Car-Net Selective Service Internet Access

Exterior

- Variable Intermittent Wipers w/Heated Jets - Wheels: 18" Austin Alloy
- Tires: P225/40R18 AS- Tailgate/Rear Door Lock Included w/Power Door Locks
- Steel Spare Wheel- Lip Spoiler- Light Tinted Glass- Liftgate Rear Cargo Access
- Fully Galvanized Steel Panels- Front Fog Lamps
- Fixed Rear Window w/Fixed Interval Wiper and Defroster
- Compact Spare Tire Mounted Inside Under Cargo- Clearcoat Paint
- Body-Colored Rear Bumper
- Body-Colored Power Heated Side Mirrors w/Manual Folding and Turn Signal Indicator
- Body-Colored Front Bumper- Body-Colored Door Handles
- Black Side Windows Trim and Black Front Windshield Trim - Black Grille
- Aero-Composite Halogen Daytime Running Headlamps

Safety

- 2 12V DC Power Outlets- 2 Seatback Storage Pockets
- 60-40 Folding Bench Front Facing Fold Forward Seatback Rear Seat - Air Filtration
- Analog Display- Cargo Area Concealed Storage- Cargo Space Lights- Carpet Floor Trim
- Cloth Door Trim Insert- Cloth Seating Surfaces- Compass
- Cruise Control w/Steering Wheel Controls- Day-Night Rearview Mirror
- Delayed Accessory Power
- Driver And Passenger Visor Vanity Mirrors w/Driver And Passenger Illumination
- Driver Foot Rest- Driver Seat- FOB Controls -inc: Trunk/Hatch/Tailgate
- Fade-To-Off Interior Lighting- Front And Rear Map Lights
- Front Center Armrest and Rear Center Armrest w/Pass-Thru w/Storage- Front Cupholder
- Full Carpet Floor Covering -inc: Carpet Front And Rear Floor Mats - Full Cloth Headliner
- Full Floor Console w/Covered Storage, Mini Overhead Console w/Storage and 2 12V DC Power Outlets
- Gauges -inc: Speedometer, Odometer, Engine Coolant Temp, Tachometer, Trip Odometer and Trip Computer
- HVAC -inc: Underseat Ducts and Console Ducts
- Heated Top Sport Front Seats -inc: manually adjustable front seats w/power recline and adjustable lumbar support
- Illuminated Locking Glove Box- Immobilizer III Engine Immobilizer
- Instrument Panel Covered Bin, Refrigerated/Cooled Box Located In The Glovebox, Driver / Passenger And Rear Door Bins

- Interior Trim -inc: Piano Black Instrument Panel Insert, Piano Black Door Panel Insert and Chrome/Aluminum Interior Accents
- Leather/Aluminum Gear Shift Knob- Manual Air Conditioning
- Manual Anti-Whiplash Adjustable Front Head Restraints and Manual Adjustable Rear Head Restraints
- Manual Tilt/Telescoping Steering Column- Outside Temp Gauge- Passenger Seat
- Perimeter Alarm- Power 1st Row Windows w/Front And Rear 1-Touch Up/Down
- Power Door Locks w/Autolock Feature- Power Fuel Flap Locking Type
- Power Rear Windows- Rear Cupholder- Redundant Digital Speedometer
- Remote Keyless Entry w/Integrated Key Transmitter, Illuminated Entry and Panic Button
- Remote Releases -Inc: Power Fuel- Rigid Cargo Cover- Seats w/Cloth Back Material
- Smart Device Integration- Sport Leather Steering Wheel- Systems Monitor
- Trip Computer- Valet Function- Vw Car-Net Selective Service Internet Access

Mechanical

- 13.2 Gal. Fuel Tank- 140 Amp Alternator- 3.24 Axle Ratio
- 4-Wheel Disc Brakes w/4-Wheel ABS, Front Vented Discs, Brake Assist and Hill Hold Control
- 60-Amp/Hr 480CCA Maintenance-Free Battery w/Run Down Protection
- Brake Actuated Limited Slip Differential- Electric Power-Assist Speed-Sensing Steering
- Engine Oil Cooler- Engine: 2.0L TSI I-4 DOHC 16-Valve Turbocharged
- Front And Rear Anti-Roll Bars- Front-Wheel Drive- Gas-Pressurized Shock Absorbers
- Multi-Link Rear Suspension w/Coil Springs
- Quasi-Dual Stainless Steel Exhaust w/Polished Tailpipe Finisher
- Sport Tuned Suspension- Strut Front Suspension w/Coil Springs
- Transmission: 6-Speed Manual

Texas Vehicle Exchange

tveauto.com

972-242-5350

1724 Luna Road

Carrollton, TX 75006

© 2019 AutoRevo - All rights reserved. - Powered by AutoRevo