

2016 Cadillac Escalade Luxury

View this car on our website at hoppermotorplex.com/6580770/ebrochure

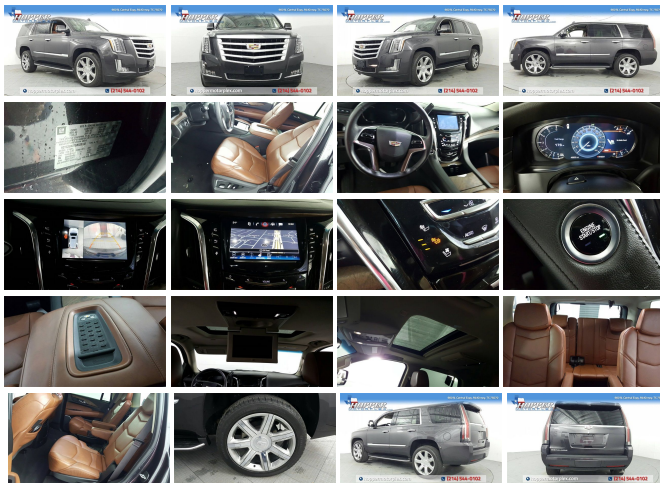


Our Price **\$45,691**

Specifications:

Year:	2016
VIN:	1GYS3BKJ7GR335743
Make:	Cadillac
Stock:	35743Z
Model/Trim:	Escalade Luxury
Condition:	Pre-Owned
Body:	SUV
Exterior:	Dark Granite Metallic
Engine:	ENGINE, 6.2L V8 WITH ACTIVE FUEL MANAGEMENT
Interior:	Tuscan Brown Leather
Mileage:	49,529
Drivetrain:	Rear Wheel Drive
Economy:	City 15 / Highway 22

2016 Cadillac Escalade Luxury Dark Granite Metallic 2016 Cadillac Escalade 4D Sport Utility RWD 8-Speed Automatic Vortec 6.2L V8 SIDI Tuscan Brown w/Semi-Aniline Nappa Leather Seat Trim.



2016 Cadillac Escalade Luxury

Hopper Motorplex - 214-544-0102 - View this car on our website at hoppermotorplex.com/6580770/ebrochure

Our Location :



2016 Cadillac Escalade Luxury
Hopper Motorplex - 214-544-0102 - View this car on our website at hoppermotorplex.com/6580770/ebrochure

Installed Options

Interior

- Seats, front bucket with leather seating surfaces, driver and front passenger, 12-way power seat adjusters including 4-way power lumbar control, independently heated driver and front passenger seat cushions and seatbacks (three settings) and 2-position driver memory
- Seats, second row bucket, power configurable (May substitute (ATT) second row 60/40 split-folding bench seats.)
- Seats, heated and cooled driver and front passenger - Seats, heated second row
- Seat adjuster, front passenger 12-way power
- Seats, third row 60/40 split-bench, power, fold flat - Console, overhead
- Console, floor with covered storage, large and small storage bins, dual cup holders, electronic climate controls and second row heated seat controls (inside console: auxiliary power outlet, two USB ports and auxiliary audio port), 110-volt outlet and auxiliary power outlet on the backside of console
- Floor covering, color-keyed carpeting
- Floor mats, color-keyed carpeted first and second row
- Steering wheel, power-tilt, color-keyed with wood and leather-wrapped rim, locking
- Steering column, power tilt and telescoping- Steering wheel, heated
- Steering wheel controls, mounted audio and Driver Information Center controls
- Tow/haul mode selector, button located at end of shift lever
- Driver Information Center with programmable personalization features such as door locking and unlocking, a trip computer with trip odometer and individual tire pressure read outs, fuel information such as range, average mpg, gallons used and oil life, and a message center that displays dozens of warning messages such as low fuel and door ajar
- Gauge cluster, 12" color, reconfigurable with Driver Information Center
- Head-Up Display, 4-color, reconfigurable
- Windows, power, with driver and front passenger Express-Up/Down and rear passengers Express-Down
- Windows, power all doors, comfort open (auto express down via key fob)
- Door locks, power programmable includes lockout protection and delayed locking
- Lock control, side door, electric- Pedals, power-adjustable for accelerator and brake
- Memory settings includes two "presets" for driver seat adjuster, outside rearview mirrors, power tilt/telescoping steering column and power-adjustable pedals

- Remote Keyless Entry, passive entry, extended range- Keyless start, push button
- Adaptive Remote Start- Cruise control, electronic with set and resume speed
- Universal Home Remote includes garage door opener, 3-channel programmable
- Theft-Deterrent Package includes (UTR) self-powered horn, (UTV) interior movement sensor and (UTU) vehicle inclination sensors, door lock shields and glass break sensors in rear quarter glass and liftgate window
- Theft-deterrent system, unauthorized entry, engine immobilizer
- Theft-deterrent alarm system, content theft alarm, self-powered horn
- Sensor, vehicle inclination, will detect vehicle being towed or jacked up
- Sensor, vehicle interior movement, will detect movement within the cabin of the vehicle
- Climate control, tri-zone automatic with individual climate settings for driver, front passenger and rear passengers
- Defogger, rear-window electric- Power outlet, 110-volt
- Wireless Charging located on the top of the center console (Requires separately purchased adapter.)
- Accents, interior, piano black and chrome finish
- Mirror, inside rearview auto-dimming, includes OnStar controls
- Lighting, interior, door handle release, door storage, console and footwell
- Lighting, interior, with theater dimming- Cargo net, rear

Exterior

- Wheels, 22" x 9" (55.9 cm x 22.9 cm) 7-spoke aluminum with premium paint and chrome inserts (Upgradeable to (RPT) 22" x 9" 6-spoke chrome multi-featured design wheels, (SMI) 22" x 9" 6-spoke chrome wheels or (RVA) 22" x 9" dual 7-spoke ultra-bright finish aluminum wheels.)
- Tires, P285/45R22 all-season, blackwall- Tire, spare P265/70R17 all-season, blackwall
- Wheel, full-size spare, 17" (43.2 cm) steel- Spare tire lock, hoist shaft
- Sunroof, power, tilt-sliding with express-open/-close and wind deflector (Not included when (A4K) sunroof delete is ordered.)
- Luggage rack, roof-mounted, chrome- Assist steps, running side board
- Moldings, bodyside, chrome- Shutters, front active aero
- Headlamps, LED high beam/low beam, light pipe
- Headlamps, IntelliBeam, automatic high beam on/off- Headlamps, automatic on/off
- Tail lamps, LED illumination
- Glass, deep-tinted (all windows, except light-tinted glass on windshield and driver- and front passenger-side glass)
- Glass, acoustic, laminated, windshield and front door glass- Windshield, solar absorbing
- Mirrors, outside heated power-adjustable, power-folding and driver-side auto-dimming, color-keyed with integrated turn signal indicators, ground illumination and programmable to provide curb view when in reverse
- Wipers, front intermittent, Rainsense- Wiper, rear intermittent with washer
- Liftgate, power, hands free open and close, programmable

Safety

- Seats, front bucket with leather seating surfaces, driver and front passenger, 12-way power seat adjusters including 4-way power lumbar control, independently heated driver and front passenger seat cushions and seatbacks (three settings) and 2-position driver memory
- Seats, second row bucket, power configurable (May substitute (ATT) second row 60/40 split-folding bench seats.)
- Seats, heated and cooled driver and front passenger - Seats, heated second row
- Seat adjuster, front passenger 12-way power
- Seats, third row 60/40 split-bench, power, fold flat - Console, overhead
- Console, floor with covered storage, large and small storage bins, dual cup holders, electronic climate controls and second row heated seat controls (inside console: auxiliary power outlet, two USB ports and auxiliary audio port), 110-volt outlet and auxiliary power outlet on the backside of console
- Floor covering, color-keyed carpeting
- Floor mats, color-keyed carpeted first and second row
- Steering wheel, power-tilt, color-keyed with wood and leather-wrapped rim, locking
- Steering column, power tilt and telescoping- Steering wheel, heated
- Steering wheel controls, mounted audio and Driver Information Center controls
- Tow/haul mode selector, button located at end of shift lever
- Driver Information Center with programmable personalization features such as door locking and unlocking, a trip computer with trip odometer and individual tire pressure read outs, fuel information such as range, average mpg, gallons used and oil life, and a message center that displays dozens of warning messages such as low fuel and door ajar
- Gauge cluster, 12" color, reconfigurable with Driver Information Center
- Head-Up Display, 4-color, reconfigurable
- Windows, power, with driver and front passenger Express-Up/Down and rear passengers Express-Down
- Windows, power all doors, comfort open (auto express down via key fob)
- Door locks, power programmable includes lockout protection and delayed locking
- Lock control, side door, electric- Pedals, power-adjustable for accelerator and brake
- Memory settings includes two "presets" for driver seat adjuster, outside rearview mirrors, power tilt/telescoping steering column and power-adjustable pedals

- Remote Keyless Entry, passive entry, extended range- Keyless start, push button
- Adaptive Remote Start- Cruise control, electronic with set and resume speed
- Universal Home Remote includes garage door opener, 3-channel programmable
- Theft-Deterrent Package includes (UTR) self-powered horn, (UTV) interior movement sensor and (UTU) vehicle inclination sensors, door lock shields and glass break sensors in rear quarter glass and liftgate window
- Theft-deterrent system, unauthorized entry, engine immobilizer
- Theft-deterrent alarm system, content theft alarm, self-powered horn
- Sensor, vehicle inclination, will detect vehicle being towed or jacked up
- Sensor, vehicle interior movement, will detect movement within the cabin of the vehicle
- Climate control, tri-zone automatic with individual climate settings for driver, front passenger and rear passengers
- Defogger, rear-window electric- Power outlet, 110-volt
- Wireless Charging located on the top of the center console (Requires separately purchased adapter.)
- Accents, interior, piano black and chrome finish
- Mirror, inside rearview auto-dimming, includes OnStar controls
- Lighting, interior, door handle release, door storage, console and footwell
- Lighting, interior, with theater dimming - Cargo net, rear

Mechanical

- Engine, 6.2L V8 with Active Fuel Management Spark Ignition Direct Injection (SIDI) and Variable Valve Timing (VVT), includes aluminum block construction (420 hp [313.2 kW] @ 5600 rpm, 460 lb-ft of torque [621 N-m] @ 4100 rpm)
- Transmission, 8-speed automatic, 8L90- Air cleaner, high-capacity
- Differential, heavy-duty locking rear- Rear axle, 3.23 ratio- Rear wheel drive
- Cooling, external engine oil cooler, heavy-duty
- Cooling, external transmission oil cooler, heavy-duty air-to-oil - Alternator, 170 amps
- Trailering equipment, heavy-duty includes trailering hitch platform, 7-wire harness with independent fused trailering circuits and 7-way sealed connector
- GVWR, 7100 lbs. (3221 kg) (2WD models only.)
- Suspension, Magnetic Ride Control with selectable sport mode
- Automatic load leveling, rear- Steering, Electronic Power Steering (EPS)
- Fueling system, capless- Brakes, 4-wheel antilock, 4-wheel disc
- Brakes, VAC power, 17" disc- Brakes, DuraLife rotors- Brakes, Hill Start-Assist/Hill hold

Option Packages

Factory Installed Packages

ENGINE, 6.2L V8 WITH ACTIVE FUEL MANAGEMENT
 Spark Ignition Direct Injection (SIDI) and Variable Valve Timing (VVT), includes aluminum block construction (420 hp [313.2 kW] @ 5600 rpm, 460 lb-ft of torque [621 N-m] @ 4100 rpm)

**All payments posted are subject to final approval on up to 72 month 6.99 rate, residualized financing program with \$3000.00 cash down plus tax title license and fees.

Hopper Motorplex
hoppermotorplex.com
 214-544-0102
 900 N Central Expy
 McKinney, Texas 75070

© 2019 AutoRevo - All rights reserved. - Powered by AutoRevo