



2011 Porsche Cayenne Turbo

Website Price \$31,995

View this vehicle on our website at autoparkdallas.com



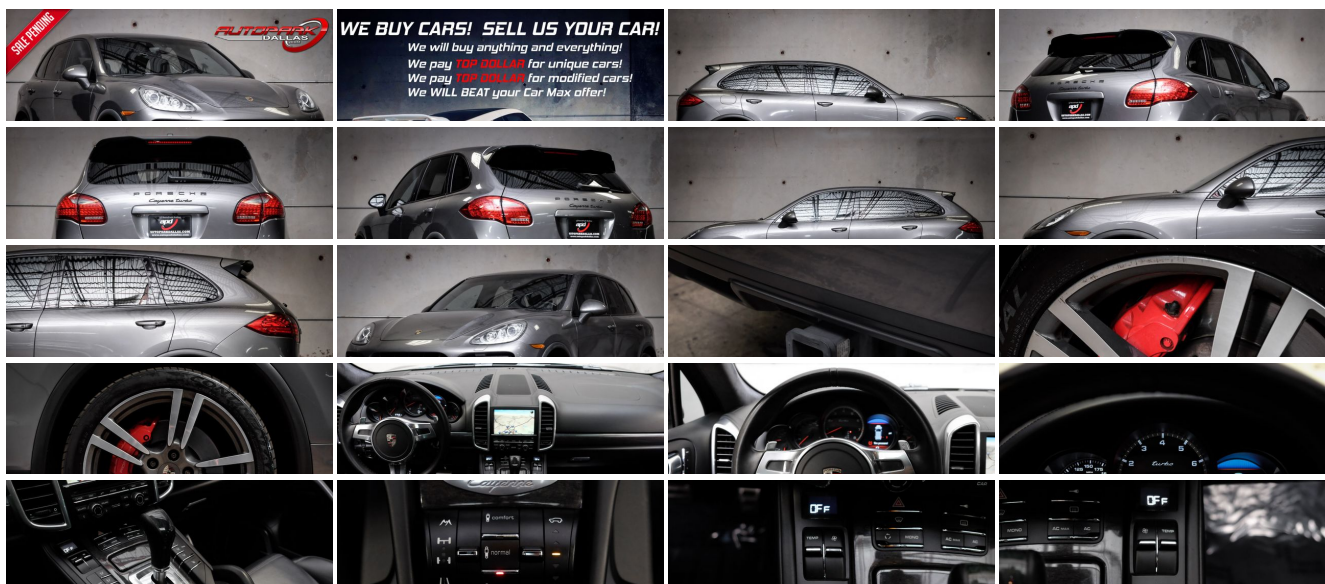
(214) 945-2601

2061 S Stemmons Fwy , Lewisville, TX 75067

Photos

Details

Contact



Specifications:

Year:	2011
VIN:	WP1AC2A20BLA81699
Make:	Porsche
Model/Trim:	Cayenne Turbo
Condition:	Pre-Owned
Body:	SUV
Exterior:	Meteor Gray Metallic
Engine:	4.8L DOHC SMPI aluminum 32-valve twin-turbocharged V8 engine
Interior:	Black Leather
Transmission:	8-speed Tiptronic S transmission w/OD -inc: Porsche hill holder, shift-on-the-move, auto start stop function
Mileage:	87,930
Drivetrain:	All Wheel Drive
Economy:	City 15 / Highway 22

Vehicle Description

AutoPark Dallas is excited to offer you this 2011 Porsche Cayenne Turbo for sale! Many may think that this Porsche is just your typical crossover SUV that has a Porsche emblem slapped on it, but oh is that wrong. This Bi-turbo V8 is a mean machine that provides comfort that is unbelievable until you experience it yourself! Words cannot truly explain what Porsche has done with these Cayenne, come check it out as its parked in our indoor 16,000 Sq Ft Showroom located in Addison, Tx. amongst our inventory of 60+ vehicles!

2011 Porsche Cayenne Turbo

Clean CarFax!

2 Set of Keys!

Meteor Gray Metallic Exterior

Black Full Leather Interior

Hands Free Bluetooth

Navigation w/ Voice Command

Lane Changing Assistance

Heated Front Row Seats

Selective Suspension Modes

Manual Mode w/ Paddle Shifters

Sport Mode

Hill Side Assistance

Back-Up Camera

Keyless Start

Powered Moonroof

Front & Rear Reverse Sensors

Burmester High-End Surround Sound System

4.8L DOHC SMPI Aluminum 32-Valve Twin-Turbocharged V8 Engine

8-Speed Automatic Transmission

All Wheel Drive

Steering Wheel Mounted Controls

Dual Climate Controls
Comfort Access Keyless Entry
AUX & CD Capable
Driver Seat Memory
Powered Driver & Passenger Seat
Front Row Lumbar Support
Powered Tailgate
Professionally Detailed!
Well Maintained!
AND SO MUCH MORE!!!

Financing is available!

Get pre-approved in no time by filling out a credit application on the finance section of our website!

We also offer different extended warranty options!

****All vehicles are priced for QUICK SALE. All REASONABLE offers will be considered****

AutoPark Dallas is dedicated to offering a level of customer service not usually found in the automobile industry. We take pride in continuing this service long after the vehicle has been delivered. We strive for excellence and make every effort to see that our customer is completely satisfied with every purchase. Referrals and Testimonials is what our business is built on.

Our extensive buying experience guarantees quality, pre-owned and new vehicles hand-picked from factory sources. Our love for the automobile and our dislike of traditional dealership tactics motivate us to provide the service we do!

Pre-purchase inspections are always welcomed! We also offer airport shuttles, amazing finance options, extended warranties and so much more!

We accept trade-ins, will BUY your car (modified or not) even if you don't buy one from us, and offer consignment deals to SELL your vehicle for you! For more information just give us a CALL or TEXT!!

#214-945-2601

Call or Text **Anytime!**

Se habla Español

WWW.AUTOPARKDALLAS.COM

Installed Options

Interior

- Air conditioning -inc: integrated charcoal canister, pollen filter - Alcantara interior trim
- Cruise control- Leather trimmed seats w/grained leather- (2) front/(2) rear cupholders
- (5) 12V pwr outlets
- Adaptive pwr front bucket seats -inc: 18-way pwr seats, pwr lumbar, driver memory pkg
- Alarm System- Alcantara roof liner- Aluminum interior trim
- Analog dial gauges w/silver trim -inc: tachometer, speedometer, oil temp, coolant temp, fuel level, compass display
- Anti-theft system -inc: passenger compartment monitor- Dual illuminated vanity mirrors
- Folding rear seats- Homelink door opener

Option Packages

Factory Installed Packages

14-WAY PWR SEATS W/MEMORY

- inc: 4-way driver/front passenger pwr lumbar, pwr adjustable steering wheel, exterior mirror courtesy lights, expanded memory settings w/seat memory

21" 911 TURBO II WHEEL

- inc: wheel arch extension

\$3,965

- Leather 3-spoke tilt/telescopic steering wheel -inc: colored Porsche crest
- Lighting -inc: continuously variable white uniform interior lighting concept
- On-board computer -inc: digital continuous indication of total mileage, trip mileage, time, outside temp, speed, warnings
- Porsche communication management (PCM) -inc: 6.5" color monitor, touchscreen controls, trip computer, integrated AM/FM/CD/MP3 radio, DVD navigation system
- Pwr windows -inc: remote for rear window - Rear window defogger
- Refrigerated glove compartment Remote central locking

Exterior

- 19" Cayenne turbo wheel- P265/50R19 all season tires- 19" collapsible spare tire
- 2-speed wiper system -inc: rain-sensing, wiper delay control, heated washer nozzles
- Bi-Xenon headlights -inc: auto leveling, Porsche Dynamic Light System (PDLs), auto on/off
- Center high-mounted spoiler-integrated rear brake lamp- Front/rear fog lamps
- Puncture sealing compound & electric compressor- Pwr heated mirrors w/memory
- Pwr tailgate -inc: auto open/close, programmable customized opening height
- Rear spoiler- Tinted glass w/grey windshield sunscreen

Safety

- Air conditioning -inc: integrated charcoal canister, pollen filter - Alcantara interior trim
- Cruise control- Leather trimmed seats w/grained leather- (2) front/(2) rear cupholders
- (5) 12V pwr outlets
- Adaptive pwr front bucket seats -inc: 18-way pwr seats, pwr lumbar, driver memory pkg
- Alarm System- Alcantara roof liner- Aluminum interior trim
- Analog dial gauges w/silver trim -inc: tachometer, speedometer, oil temp, coolant temp, fuel level, compass display
- Anti-theft system -inc: passenger compartment monitor- Dual illuminated vanity mirrors
- Folding rear seats- Homelink door opener
- Leather 3-spoke tilt/telescopic steering wheel -inc: colored Porsche crest
- Lighting -inc: continuously variable white uniform interior lighting concept
- On-board computer -inc: digital continuous indication of total mileage, trip mileage, time, outside temp, speed, warnings
- Porsche communication management (PCM) -inc: 6.5" color monitor, touchscreen controls, trip computer, integrated AM/FM/CD/MP3 radio, DVD navigation system
- Pwr windows -inc: remote for rear window - Rear window defogger
- Refrigerated glove compartment Remote central locking

Mechanical

- 4-wheel vented disc brakes -inc: 6-piston front/4-piston rear monobloc fixed aluminum red brake calipers
- 4.8L DOHC SMPI aluminum 32-valve twin-turbocharged V8 engine
- 8-speed Tiptronic S transmission w/OD -inc: Porsche hill holder, shift-on-the-move, auto start stop function
- All wheel drive- Double wishbone front suspension- Engine drag torque control (EDTC)
- Front/rear stabilizer bars- Multi-link rear suspension
- Porsche active suspension management (PASM)
- Servotronic -inc: speed-sensitive pwr steering system- Variocam plus

6-DISC CD/DVD CHANGER

-inc: 6-second shock compensation memory, integrated CD/MP3 changer \$650

ANTHRACITE BIRCH HEATED 3-SPOKE MULTI-FUNCTION STEERING WHEEL

\$365

ANTHRACITE BIRCH INTERIOR PKG

-inc: dashboard trim strip, front/rear door trim strips, lower center console, gear selector trim, trim panel & front ashtray cover \$345

BLACK EXTERIOR PKG

-inc: side window frames & rear molding \$150

BURMESTER HIGH-END SURROUND SOUND SYSTEM

-inc: 15 individually activated loudspeakers, 300 watt subwoofer, Class-D digital amplifier w/16-channel, air-motion-transformer (AMT) \$3,990

LANE CHANGE ASSIST (LCA)

\$850

PORSCHE CREST IN FRONT HEADRESTS

\$285

PORSCHE ENTRY & DRIVE

-inc: interior & exterior antennas, proximity sensors, lock buttons in door handles, chrome-look inserts in the handles, dual locking button \$1,090

PORSCHE TORQUE VECTORING PLUS (PTV PLUS)

-inc: driving-torque porportioning on rear-wheels w/electronically controlled rear-axle differential lock \$1,490

REVERSING CAMERA W/PARKASSIST FRONT AND REAR

\$655

SIDE AIRBAGS REAR

\$370

TRAILER HITCH W/O REMOVABLE BALL JOINT

\$650

METEOR GRAY METALLIC

STANDARD PAINT

BLACK, FULL LEATHER SEAT TRIM

Option Packages Total

\$14,855

AUTOPARK

Dallas

Auto Park Dallas

View this car on our website at autoparkdallas.com/6580329

Website: autoparkdallas.com

Phone: (214) 945-2601

Map: 2061 S Stemmons Fwy, Lewisville, TX 75067

