

randyadamsinc.com  
(830) 625-7159  
1687 Business Loop 35 S  
New Braunfels, TX 78130



## 2017 Ford F-150 XLT

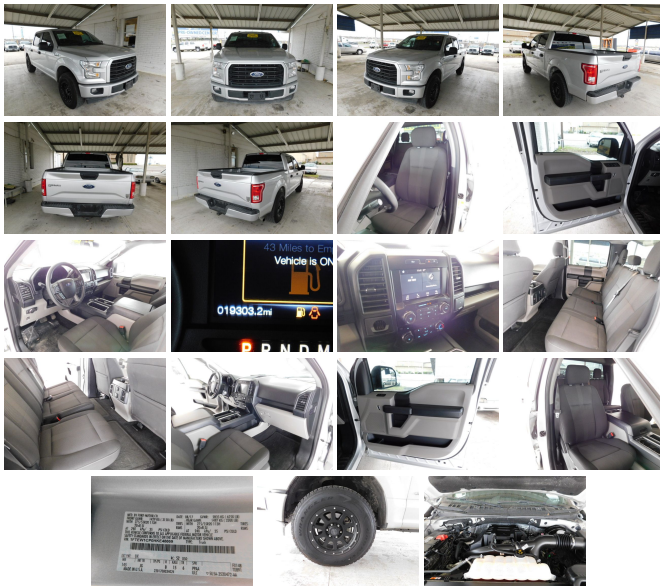
View this car on our website at [randyadamsinc.com/6580282/ebrochure](http://randyadamsinc.com/6580282/ebrochure)



Our Price **\$28,950**

**Specifications:**

**Year:** 2017  
**VIN:** 1FTEW1CP0HKE48869  
**Make:** Ford  
**Stock:** E48869  
**Model/Trim:** F-150 XLT  
**Condition:** Pre-Owned  
**Body:** Pickup Truck  
**Exterior:** Ingot Silver Metallic  
**Engine:** ENGINE: 2.7L V6 ECOBOOST  
**Interior:** Black Cloth  
**Mileage:** 19,303  
**Drivetrain:** Rear Wheel Drive  
**Economy:** City 18 / Highway 25



Thank you for looking at another one of Randy Adams Inc.'s on-line listings!

Please find out more about this vehicle below:

**2017 FORD F150 XLT**

- 2.7L V6 ECOBOOST
- AUTOMATIC/AC
- TILT WHEEL/CRUISE CONTROL
- AM/FM STEREO
- BLUE TOOTH
- TRAILER PACKAGE
- POWER WINDOWS, LOCKS, MIRRORS
- AND MORE

Randy Adams Inc. offers only the very best used cars, trucks, and SUVs in the New Braunfels area. Give us a call at 830-625-7159, email [sales@randyadamsinc.com](mailto:sales@randyadamsinc.com), or stop by and visit us at 1687 Business Loop 35 S, New Braunfels, TX 78130.

Prices do not include Tax, Title, License, Inspection and Documentation Fee.

It is the customer's sole responsibility to verify the existence and condition of any equipment listed. Neither the dealership nor AutoRevo is responsible for misprints on prices or equipment. It is the customer's sole responsibility to verify the accuracy of the prices with the dealer. Pricing subject to change without notice.

2017 Ford F-150 XLT

Randy Adams Inc. - (830) 625-7159 - View this car on our website at [randyadamsinc.com/6580282/ebrochure](http://randyadamsinc.com/6580282/ebrochure)

### Our Location :



2017 Ford F-150 XLT

Randy Adams Inc. - (830) 625-7159 - View this car on our website at [randyadamsinc.com/6580282/ebrochure](http://randyadamsinc.com/6580282/ebrochure)

## Installed Options

### Interior

- 2 Seatback Storage Pockets- 3 12V DC Power Outlets
- 4-Way Driver Seat -inc: Manual Recline and Fore/Aft Movement
- 4-Way Passenger Seat -inc: Manual Recline and Fore/Aft Movement
- 60-40 Folding Split-Bench Front Facing Fold-Up Cushion Rear Seat - Analog Display
- Cloth 40/20/40 Front Seat -inc: 4-way adjustable driver/passenger headrests, manual driver/passenger lumbar and armrest w/storage
- Compass- Cruise Control w/Steering Wheel Controls- Day-Night Rearview Mirror
- Delayed Accessory Power- Driver And Passenger Visor Vanity Mirrors
- Fade-To-Off Interior Lighting- Front And Rear Map Lights- Front Cupholder
- Full Carpet Floor Covering -inc: Carpet Front And Rear Floor Mats - Full Cloth Headliner
- Gauges -inc: Speedometer, Odometer, Voltmeter, Oil Pressure, Engine Coolant Temp, Tachometer, Transmission Fluid Temp and Trip Odometer
- Glove Box- HVAC -inc: Underseat Ducts
- Instrument Panel Bin, Dashboard Storage, Driver / Passenger And Rear Door Bins and 1st Row Underseat Storage
- Interior Trim -inc: Metal-Look Instrument Panel Insert, Cabback Insulator and Chrome Interior Accents
- Keypad- Manual Adjustable Rear Head Restraints- Manual Air Conditioning
- Manual Tilt/Telescoping Steering Column- Outside Temp Gauge- Perimeter Alarm
- Pickup Cargo Box Lights
- Power 1st Row Windows w/Driver And Passenger 1-Touch Up/Down
- Power Door Locks w/Autolock Feature- Power Rear Windows- Rear Cupholder
- Remote Keyless Entry w/Integrated Key Transmitter, Illuminated Entry and Panic Button
- Securilock Anti-Theft Ignition (pats) Engine Immobilizer- Urethane Gear Shift Knob

## Exterior

- Aluminum Panels- Black Door Handles
- Black Power Side Mirrors w/Convex Spotter and Manual Folding
- Black Side Windows Trim and Black Front Windshield Trim
- Cargo Lamp w/High Mount Stop Light
- Chrome Front Bumper w/Body-Colored Rub Strip/Fascia Accent- Chrome Grille
- Chrome Rear Step Bumper- Clearcoat Paint- Deep Tinted Glass- Fixed Rear Window
- Front Fog Lamps- Full-Size Spare Tire Stored Underbody w/Crankdown
- Fully Automatic Aero-Composite Halogen Daytime Running Lights Preference Setting Headlamps w/Delay-Off
- Perimeter/Approach Lights- Regular Box Style- Steel Spare Wheel
- Tailgate Rear Cargo Access- Tailgate/Rear Door Lock Included w/Power Door Locks
- Tires: P245/70R17 BSW A/S- Variable Intermittent Wipers
- Wheels: 17" Silver Painted Aluminum

## Safety

- 2 Seatback Storage Pockets- 3 12V DC Power Outlets
- 4-Way Driver Seat -inc: Manual Recline and Fore/Aft Movement
- 4-Way Passenger Seat -inc: Manual Recline and Fore/Aft Movement
- 60-40 Folding Split-Bench Front Facing Fold-Up Cushion Rear Seat - Analog Display
- Cloth 40/20/40 Front Seat -inc: 4-way adjustable driver/passenger headrests, manual driver/passenger lumbar and armrest w/storage
- Compass- Cruise Control w/Steering Wheel Controls- Day-Night Rearview Mirror
- Delayed Accessory Power- Driver And Passenger Visor Vanity Mirrors
- Fade-To-Off Interior Lighting- Front And Rear Map Lights- Front Cupholder
- Full Carpet Floor Covering -inc: Carpet Front And Rear Floor Mats - Full Cloth Headliner
- Gauges -inc: Speedometer, Odometer, Voltmeter, Oil Pressure, Engine Coolant Temp, Tachometer, Transmission Fluid Temp and Trip Odometer
- Glove Box- HVAC -inc: Underseat Ducts
- Instrument Panel Bin, Dashboard Storage, Driver / Passenger And Rear Door Bins and 1st Row Underseat Storage
- Interior Trim -inc: Metal-Look Instrument Panel Insert, Cabback Insulator and Chrome Interior Accents
- Keypad- Manual Adjustable Rear Head Restraints- Manual Air Conditioning
- Manual Tilt/Telescoping Steering Column- Outside Temp Gauge- Perimeter Alarm
- Pickup Cargo Box Lights
- Power 1st Row Windows w/Driver And Passenger 1-Touch Up/Down
- Power Door Locks w/Autolock Feature- Power Rear Windows- Rear Cupholder
- Remote Keyless Entry w/Integrated Key Transmitter, Illuminated Entry and Panic Button
- Securilock Anti-Theft Ignition (pats) Engine Immobilizer- Urethane Gear Shift Knob

## Mechanical

- 1610# Maximum Payload- 200 Amp Alternator- 23 Gal. Fuel Tank- 3.55 Axle Ratio
- 4-Wheel Disc Brakes w/4-Wheel ABS, Front And Rear Vented Discs, Brake Assist, Hill Hold Control and Electric Parking Brake
- 70-Amp/Hr 610CCA Maintenance-Free Battery w/Run Down Protection
- Double Wishbone Front Suspension w/Coil Springs
- Electric Power-Assist Speed-Sensing Steering- Engine: 3.5L V6 Ti-VCT FFV
- Front Anti-Roll Bar- GVWR: 6,150 lbs Payload Package
- Gas-Pressurized Shock Absorbers- Leaf Rear Suspension w/Leaf Springs
- Rear-Wheel Drive- Single Stainless Steel Exhaust
- Towing Equipment -inc: Harness and Trailer Sway Control
- Transmission: Electronic 6-Speed Automatic -inc: tow/haul and sport mode

## Option Packages

### Factory Installed Packages

-  
ENGINE: 2.7L V6 ECOBOOST  
-inc: auto start/stop, GVWR: 6,250 lbs Payload Package, 3.15 Axle Ratio \$995

-  
Option Packages Total  
\$995

Purchase prices do not include taxes, title, license, inspection or doc fee. It is the customer's sole responsibility to verify the accuracy of the price and existence and condition of any equipment listed. Dealer is not responsible for any typographical, technical or misprint errors on prices or equipment. This site and all information and materials appearing on it, are presented to the user "as is" without warranty of any kind, either express or implied. Mileage posted may vary slightly due to local test driving, in-transit repairs or road testing. Pricing subject to change without notice. All vehicles are subject to prior sale.



[randyadamsinc.com](http://randyadamsinc.com)

(830) 625-7159

1687 Business Loop 35 S

New Braunfels, TX 78130

© 2019 AutoRevo - All rights reserved. - Powered by AutoRevo