

2018 Ford F-250 LARIAT 4X4 MSRP 74K,PANO ROOF,NAV,HTD/COOL LTH,13K

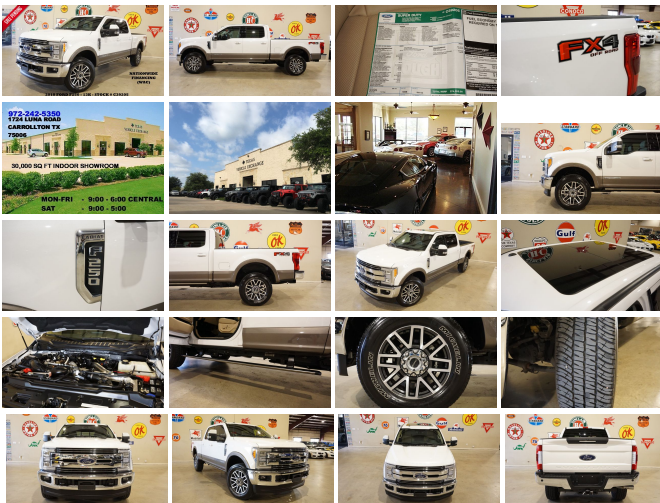
View this car on our website at tveauto.com/6578101/ebrochure



Our Price **\$59,900**

Specifications:

Year:	2018
VIN:	1FT7W2BTXJEC39205
Make:	Ford
Stock:	C39205
Model/Trim:	F-250 LARIAT 4X4 MSRP 74K,PANO ROOF,NAV,HTD/COOL LTH,13K
Condition:	Pre-Owned
Body:	Pickup Truck
Exterior:	White Platinum Metallic Tri-Coat
Engine:	ENGINE: 6.7L 4V OHV POWER STROKE V8 TURBO DIESEL B20
Interior:	Camel Leather
Transmission:	TRANSMISSION: TORQSHIFT 6-SPEED AUTOMATIC
Mileage:	13,356
Drivetrain:	4 Wheel Drive



NATION WIDE FINANCING

SUBMIT CREDIT APP WWW.TVEAUTO.COM

OR CALL 972-242-5350

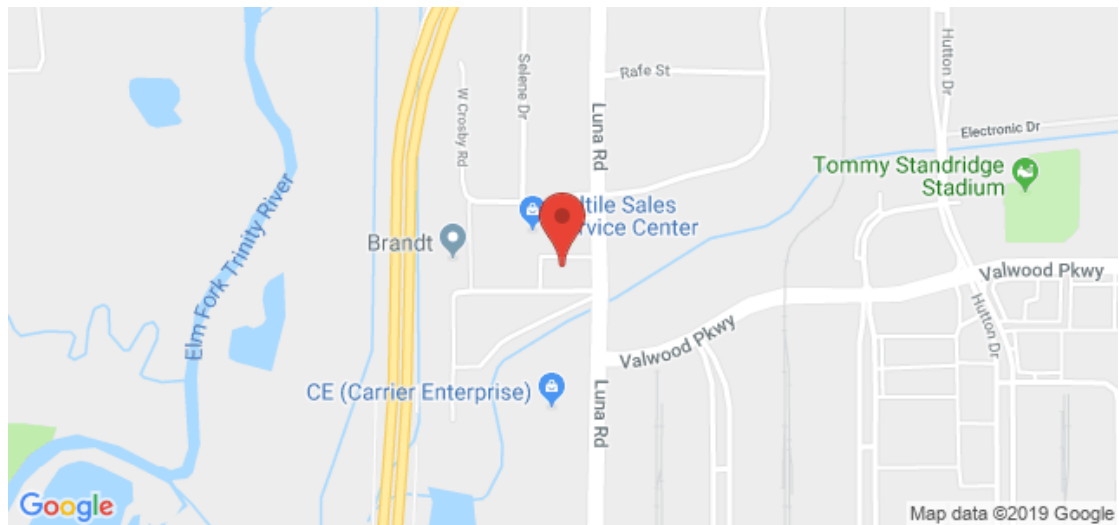
2018 FORD F250 LARIAT CREW-CAB 4X4,
6.7L V8 TURBO DIESEL ENGINE,
AUTOMATIC TRANSMISSION, ONLY 13K,
WHITE PLATINUM METALLIC W/CAMEL
LEATHER INTERIOR, CARFAX REPORTS
1 OWNER NO ACCIDENTS, APPEARS TO BE
A NON-SMOKER, REMOTE START,
FOGLIGHTS, TWIN PANEL MOONROOF,
NAVIGATION, BACK-UP CAMERA, CARGO
CAMERA, POWER RETRACTABLE RUNNING
BOARDS, POWER WINDOWS, POWER
DOOR LOCKS, POWER FOLDING &

TELESCOPING TRAILER TOWING HEATED MIRRORS WITH TURN SIGNALS, BLIND SPOT CONTROL, POWER & HEATED TILT/TELESCOPE STEERING WHEEL WITH AUDIO & CRUISE CONTROLS, DUAL POWER HEATED & COOLED FRONT SEATS WITH DRIVER 3 MEMORY POSITION, POWER ADJUSTABLE PEDALS, TRACTION CONTROL, HILL DESCENT CONTROL, TRAILER BRAKE CONTROLLER, ICE COLD A/C, DUAL CLIMATE CONTROL, SONY HD AM/FM/SIRIUS STEREO WITH CD PLAYER, MICROSOFT SYNC VOICE ACTIVATED SYSTEM, SELF DIMMING REAR VIEW MIRROR, DUAL LIGHTED VANITY MIRRORS, REAR A/C VENTS, POWER SLIDING REAR WINDOW, SPRAY IN BEDLINER, 5TH WHEEL/GOOSENECK PREP PACKAGE, TAILGATE STEP, REAR PARK DISTANCE SENSORS, TOW PACKAGE WITH RECEIVER HITCH, FLOOR MATS, OWNER'S MANUAL, 2 KEYS/2 REMOTES, 20 IN ALUMINUM WHEELS, FRONT TIRES ARE MICHELIN LT275/65R/20 WITH APPROX 95% TREAD LIFE REMAINING, REAR TIRES ARE MICHELIN LT275/65R/20 WITH APPROX 95% TREAD LIFE REMAINING. RUNS AND DRIVES GREAT. GIVE US A CALL @ 972-242-5350 OR STOP BY FOR A TEST DRIVE. 1724 LUNA RD IN CARROLLTON - 2 MILES NORTH OF 635. CLICK ON CARFAX ICON TO VIEW A FULL REPORT AT NO COST TO YOU.

2018 Ford F-250 LARIAT 4X4 MSRP 74K,PANO ROOF,NAV,HTD/COOL LTH,13K

Texas Vehicle Exchange - 972-242-5350 - View this car on our website at veauto.com/6578101/ebrochure

Our Location :



2018 Ford F-250 LARIAT 4X4 MSRP 74K,PANO ROOF,NAV,HTD/COOL LTH,13K
Texas Vehicle Exchange - 972-242-5350 - View this car on our website at veauto.com/6578101/ebrochure

Installed Options

Interior

- 10-Way Power Driver Seat -inc: Power Recline, Height Adjustment, Fore/Aft Movement, Cushion Tilt and Power 2-Way Lumbar Support
- 10-Way Power Passenger Seat -inc: Power Recline, Height Adjustment, Fore/Aft Movement, Cushion Tilt and Power 2-Way Lumbar Support
- 110V/400W Outlet -inc: 1 in-dash mounted outlet and 2nd outlet in the console
- 2 Seatback Storage Pockets- Air Filtration- Cruise Control w/Steering Wheel Controls
- Day-Night Auto-Dimming Rearview Mirror- Delayed Accessory Power
- Driver And Passenger Visor Vanity Mirrors w/Driver And Passenger Illumination
- Fade-To-Off Interior Lighting- Flow-Through Console -inc: 110V/400W outlet in rear
- Front And Rear Map Lights- Front Cupholder- Front Facing Fold-Up Cushion Rear Seat
- Front Leather Seating Surfaces 40/Console/40 -inc: 10-way power driver and passenger seating (includes power lumbar), 4-way adjustable driver/passenger headrests, matching 60/40 rear bench w/partitioned locking under-seat storage and 12V powerpoint
- Front Seats w/Power 2-Way Driver Lumbar
- Full Carpet Floor Covering -inc: Carpet Front And Rear Floor Mats - Full Cloth Headliner
- Full Overhead Console w/Storage
- Gauges -inc: Speedometer, Odometer, Oil Pressure, Engine Coolant Temp, Tachometer, Transmission Fluid Temp, Engine Hour Meter, Trip Odometer and Trip Computer
- HVAC -inc: Underseat Ducts and Console Ducts - Illuminated Locking Glove Box
- Instrument Panel Bin, Covered Dashboard Storage, Driver / Passenger And Rear Door Bins and Locking 2nd Row Underseat Storage
- Interior Trim -inc: Metal-Look Instrument Panel Insert, Simulated Wood/Metal-Look Door Panel Insert, Simulated Wood/Leather Console Insert and Chrome/Metal-Look Interior Accents
- Keypad- Leather Steering Wheel- Manual Adjustable Rear Head Restraints
- Manual Tilt/Telescoping Steering Column- Outside Temp Gauge- Perimeter Alarm
- Power 1st Row Windows w/Driver And Passenger 1-Touch Up/Down
- Power Adjustable Pedals- Power Door Locks w/Autolock Feature- Power Rear Windows
- Rear Center Armrest- Rear Cupholder
- Remote Keyless Entry w/Integrated Key Transmitter, Illuminated Entry and Panic Button

- Securilock Anti-Theft Ignition (pats) Engine Immobilizer- Systems Monitor- Trip Computer
- Underhood And Pickup Cargo Box Lights- Urethane Gear Shift Knob
- Voice Activated Dual Zone Front Automatic Air Conditioning

Exterior

- Steel Spare Wheel- Tailgate Rear Cargo Access
- Tailgate/Rear Door Lock Included w/Power Door Locks- Tires: LT275/65R18E BSW A/S
- Variable Intermittent Wipers
- Wheels: 18" Bright Machined Cast Aluminum -inc: magnetic painted pockets and bright hub covers/center ornaments
- Regular Box Style- Power Rear Window w/Defroster
- Power Extendable Trailer Style Mirrors- Perimeter/Approach Lights
- Fully Automatic Aero-Composite Halogen Daytime Running Lights Preference Setting Headlamps w/Delay-Off
- Full-Size Spare Tire Stored Underbody w/Crankdown- Front License Plate Bracket
- Front Fog Lamps- Deep Tinted Glass- Clearcoat Paint- Chrome Rear Step Bumper
- Chrome Grille
- Chrome Front Bumper w/Body-Colored Rub Strip/Fascia Accent and 2 Tow Hooks
- Cargo Lamp w/High Mount Stop Light- Body-Colored Door Handles
- Black Side Windows Trim and Black Front Windshield Trim
- Black Power Heated Side Mirrors w/Convex Spotter, Power Folding and Turn Signal Indicator
- Aluminum Panels

Safety

- 10-Way Power Driver Seat -inc: Power Recline, Height Adjustment, Fore/Aft Movement, Cushion Tilt and Power 2-Way Lumbar Support
- 10-Way Power Passenger Seat -inc: Power Recline, Height Adjustment, Fore/Aft Movement, Cushion Tilt and Power 2-Way Lumbar Support
- 110V/400W Outlet -inc: 1 in-dash mounted outlet and 2nd outlet in the console
- 2 Seatback Storage Pockets- Air Filtration- Cruise Control w/Steering Wheel Controls
- Day-Night Auto-Dimming Rearview Mirror- Delayed Accessory Power
- Driver And Passenger Visor Vanity Mirrors w/Driver And Passenger Illumination
- Fade-To-Off Interior Lighting- Flow-Through Console -inc: 110V/400W outlet in rear
- Front And Rear Map Lights- Front Cupholder- Front Facing Fold-Up Cushion Rear Seat
- Front Leather Seating Surfaces 40/Console/40 -inc: 10-way power driver and passenger seating (includes power lumbar), 4-way adjustable driver/passenger headrests, matching 60/40 rear bench w/partitioned locking under-seat storage and 12V powerpoint
- Front Seats w/Power 2-Way Driver Lumbar
- Full Carpet Floor Covering -inc: Carpet Front And Rear Floor Mats- Full Cloth Headliner
- Full Overhead Console w/Storage
- Gauges -inc: Speedometer, Odometer, Oil Pressure, Engine Coolant Temp, Tachometer, Transmission Fluid Temp, Engine Hour Meter, Trip Odometer and Trip Computer
- HVAC -inc: Underseat Ducts and Console Ducts - Illuminated Locking Glove Box
- Instrument Panel Bin, Covered Dashboard Storage, Driver / Passenger And Rear Door Bins and Locking 2nd Row Underseat Storage
- Interior Trim -inc: Metal-Look Instrument Panel Insert, Simulated Wood/Metal-Look Door Panel Insert, Simulated Wood/Leather Console Insert and Chrome/Metal-Look Interior Accents
- Keypad- Leather Steering Wheel- Manual Adjustable Rear Head Restraints
- Manual Tilt/Telescoping Steering Column- Outside Temp Gauge- Perimeter Alarm
- Power 1st Row Windows w/Driver And Passenger 1-Touch Up/Down
- Power Adjustable Pedals- Power Door Locks w/Autolock Feature- Power Rear Windows
- Rear Center Armrest- Rear Cupholder
- Remote Keyless Entry w/Integrated Key Transmitter, Illuminated Entry and Panic Button
- Securilock Anti-Theft Ignition (pats) Engine Immobilizer- Systems Monitor- Trip Computer
- Underhood And Pickup Cargo Box Lights- Urethane Gear Shift Knob
- Voice Activated Dual Zone Front Automatic Air Conditioning

Mechanical

- 3.73 Axle Ratio- 34 Gal. Fuel Tank- 3470# Maximum Payload
- 4-Wheel Disc Brakes w/4-Wheel ABS, Front And Rear Vented Discs, Brake Assist and Hill Hold Control
- 50-State Emissions System
- 78-Amp/Hr 750CCA Maintenance-Free Battery w/Run Down Protection
- Auto Locking Hubs
- Class V Towing Equipment -inc: Harness, Hitch, Brake Controller and Trailer Sway Control
- Electronic Transfer Case
- Engine: 6.2L 2-Valve SOHC EFI NA V8 Flex-Fuel -inc: Flex-Fuel badge on fleet orders only
- Firm Suspension- Front Anti-Roll Bar- Front Suspension w/Coil Springs
- GVWR: 10,000 lb Payload Package- HD 200 Amp Alternator- HD Shock Absorbers
- Hydraulic Power-Assist Steering- Leaf Rear Suspension w/Leaf Springs

- Part-Time Four-Wheel Drive- Single Stainless Steel Exhaust- Transmission w/Oil Cooler
- Transmission: TorqShift-G 6-Spd Auto w/SelectShift

Option Packages

Factory Installed Packages

ENGINE: 6.7L 4V OHV POWER STROKE

V8 TURBO DIESEL B20

-inc: manual push-button engine-exhaust braking and intelligent oil-life monitor, 34 Gallon Fuel Tank, Extra Heavy-Duty 220 Amp Alternator, 3.31 Axle Ratio, Dual 78-AH 750 CCA Batteries

\$9,120

TRANSMISSION: TORQSHIFT 6-SPEED AUTOMATIC

-inc: (6R140), SelectShift

5TH WHEEL/GOOSENECK HITCH PREP PACKAGE

-inc: 5 pickup bed attachment points w/plugs, 1 frame under-bed cross member and 1 integrated 7-pin connector on driver's side pickup bed wall, 5th wheel hitch compatibility: the 5th Wheel/Gooseneck Prep Package (53W) is compatible w/the factory orderable 5th Wheel Hitch Kits (15K and 15L) and dealer-installed Ford custom accessories 5th Wheel Hitch Kit by Reese - part #BC3Z-19D520-A (8ft box only), The prep package is also compatible w/Reese Signature Series 5th wheel hitch kits updated w/a new Leg Service Kit - part #BC3Z-A00A25-A (8ft box only), The 5th Wheel Hitch Kit (15K), 5th Wheel Hitch Kit (15L) and dealer-installed Ford custom accessories 5th Wheel Hitch Kit by Reese - part #BC3Z-19D520-A is not released to the short box (6.75ft box), NOTE: the short pickup box provides less clearance between the cab and 5th wheel trailer compared to long box pickups, The receiver centerline of the hitch should be mounted at least 2" forward from the rear-axle of the truck chassis,

\$500

BLIND SPOT INFORMATION SYSTEM (BLIS)

-inc: cross-traffic alert and trailer tow (BLIS sensor in taillamp)

\$540

FRONT & REAR WHEEL WELL LINERS

\$325

FX4 OFF-ROAD PACKAGE

-inc: Unique FX4 Off-Road Box Decal, Off-Road Specifically Tuned Shock Absorbers, front/rear, Hill Descent Control, Transfer Case & Fuel Tank Skid Plates

\$400

GOOSENECK HITCH KIT (PRE-INSTALLED)

-inc: Custom accessory

\$250

LARIAT ULTIMATE PACKAGE

-inc: Automatic High Beam, rain-sensing windshield wipers, Intelligent Access w/Push-Button Start, Easy Entry/Exit Memory Driver's Seat Feature, Remote Start System, Remote Tailgate Release, Ambient Lighting - Fixed Color, Memory

\$3,255

Power-Adjustable Pedals,
PowerScope Trailer Tow
Mirrors w/Memory, Power
Heated/Cooled Passenger
Seat, Tailgate Step & Handle,
Power Heated/Cooled Driver
Seat w/Memory, LED Box
Lighting, LED Center High-
Mounted Stop Lamp (CHMSL),
Power Telescoping/Tilt
Steering Wheel/Column, heat,
memory and audio controls,
Voice-Activated Navigation,
HD and SiriusXM Traffic and
Travel Link, NOTE: SiriusXM
Traffic and Travel Link includes
a 5-year prepaid subscription,
Services are not available in
Alaska and Hawaii

**POWER-DEPLOYABLE RUNNING
BOARDS**

\$795

**QUAD BEAM LED HEADLAMPS & LED
TAILLAMPS**

-inc: LED fog lamps and LED
Center High-Mounted Stop
Lamp (CHMSL) \$1,080

REAR CHMSL CAMERA

-inc: Display in center stack
screen, LED Center High-
Mounted Stop Lamp (CHMSL)
w/cargo light and rear video
camera \$200

TOUGH BED SPRAY-IN BEDLINER

-inc: tailgate-guard, black box bed
tie-down hooks, black bed
attachment bolts and BoxLink
mounting plates \$540

TWIN PANEL POWER MOONROOF

-inc: map lights and moonroof
switches \$1,295

**ELECTRONIC-LOCKING W/3.55 AXLE
RATIO**

\$390

LOWER ACCENT TWO-TONE PAINT

-inc: wheel-lip moldings \$470

WHITE PLATINUM METALLIC TRI-COAT
\$595

**WHEELS: 20" BRIGHT MACHINED CAST
ALUMINUM**

-inc: magnetic painted pockets
and bright hub covers/center
ornaments \$1,420

Option Packages Total

\$21,175

1724 Luna Road
Carrollton, TX 75006

© 2019 AutoRevo - All rights reserved. - Powered by [AutoRevo](#)