

# 2018 Chevrolet Camaro ZL1 Coupe 6 SPD, 1LE EXTREME TRACK PKG, NAV, 2K!

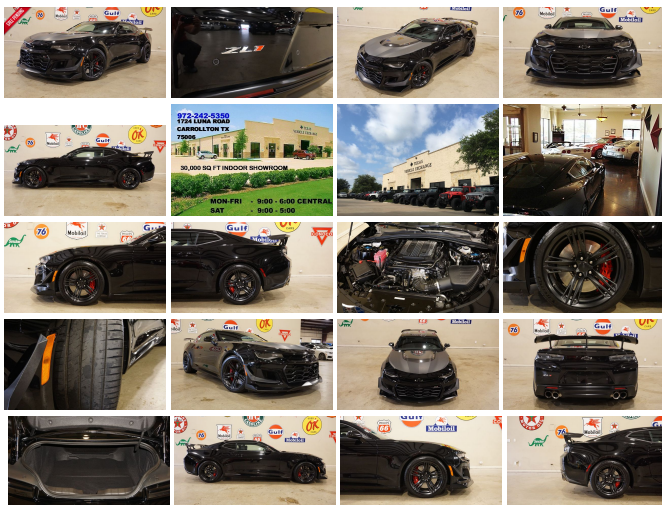
View this car on our website at [tveauto.com/6577458/ebrochure](http://tveauto.com/6577458/ebrochure)



Our Price **\$62,900**

## Specifications:

<b>Year:</b>	2018
<b>VIN:</b>	1G1FJ1R65J0156792
<b>Make:</b>	Chevrolet
<b>Stock:</b>	156792
<b>Model/Trim:</b>	Camaro ZL1 Coupe 6 SPD, 1LE EXTREME TRACK PKG, NAV, 2K!
<b>Condition:</b>	Pre-Owned
<b>Body:</b>	Coupe
<b>Exterior:</b>	Black
<b>Engine:</b>	ENGINE, 6.2L SUPERCHARGED V8 DI, VVT
<b>Interior:</b>	Jet Black with Red accents Suede/Leather
<b>Transmission:</b>	TRANSMISSION, 6-SPEED MANUAL
<b>Mileage:</b>	2,646
<b>Drivetrain:</b>	Rear Wheel Drive
<b>Economy:</b>	City 13 / Highway 20



NATION WIDE FINANCING

SUBMIT CREDIT APP [WWW.TVEAUTO.COM](http://WWW.TVEAUTO.COM)

OR CALL 972-242-5350

2018 CHEVROLET CAMARO ZL1 COUPE, 6.2L SUPERCHARGED V8 ENGINE, 6 SPEED MANUAL TRANSMISSION, ONLY 2K, BLACK W/BLACK LEATHER & SUEDE INTERIOR, CARFAX REPORTS 1 OWNER NO ACCIDENTS, APPEARS TO BE A NON-SMOKER, 1LE EXTREME TRACK PERFORMANCE PACKAGE, HEAD-UP DISPLAY, NAVIGATION, BACK-UP CAMERA, POWER WINDOWS, POWER DOOR LOCKS, POWER HEATED MIRRORS, BLIND SPOT CONTROL.

HEATED TILT/TELESCOPE STEERING  
WHEEL WITH AUDIO & CRUISE CONTROLS,  
RECARO DUAL POWER HEATED & COOLED  
FRONT SEATS WITH DRIVER 2 MEMORY  
POSITION, TRACTION CONTROL,  
TOUR/SPORT/TRACK/SNOW CONTROL, ICE  
COLD A/C, DUAL CLIMATE CONTROL, BOSE  
AM/FM/SIRIUS STEREO, BLUETOOTH, SELF  
DIMMING REAR VIEW MIRROR, ONSTAR,  
HOMELINK GARAGE CONTROLS, DUAL  
LIGHTED VANITY MIRRORS, CARBON  
FIBER REAR SPOILER, REAR PARK  
DISTANCE SENSORS, 2 FRONT FLOOR  
MATS, OWNER'S MANUAL, 2 KEYS/2  
REMOTES. 19 IN BLACK FORGED  
ALUMINUM WHEELS, BREMBO BRAKES,  
FRONT TIRES ARE MICHELIN 305/30ZR/19,  
REAR TIRES ARE MICHELIN 325/30ZR/19.  
RUNS AND DRIVES GREAT. GIVE US A  
CALL @ 972-242-5350 OR STOP BY FOR A  
TEST DRIVE. 1724 LUNA RD IN  
CARROLLTON - 2 MILES NORTH OF  
635. CLICK ON CARFAX ICON TO VIEW A  
FULL REPORT AT NO COST TO YOU.

---

2018 Chevrolet Camaro ZL1 Coupe 6 SPD,1LE EXTREME TRACK PKG,NAV,2K!

Texas Vehicle Exchange - 972-242-5350 - View this car on our website at [veauto.com/6577458/ebrochure](http://veauto.com/6577458/ebrochure)

## Our Location :



2018 Chevrolet Camaro ZL1 Coupe 6 SPD, 1LE EXTREME TRACK PKG, NAV, 2K!

Texas Vehicle Exchange - 972-242-5350 - View this car on our website at [veauto.com/6577458/ebrochure](http://veauto.com/6577458/ebrochure)

## Installed Options

### Interior

- Air conditioning, dual-zone automatic climate control with individual climate settings for driver and dedicated passenger controls and outside temperature display
- Compass display
- Cruise control, electronic with set and resume speed, steering wheel mounted
- Cup holders, 2 front- Dead pedal, driver- Defogger, rear-window, electric
- Door locks, power programmable with lockout protection
- Driver Information Center, enhanced, 8" diagonal multi-color re-configurable display
- Floor mats, carpeted front- Glovebox, lockable
- Head-Up Display with color digital readouts for vehicle speed, selected gear, G-Force, audio system information, high-beam indicator, compass, outside air temperature, turn signals, tachometer, vehicle messages, Turn-by-Turn information and phone information
- Interior trim, aluminum accents on door trim and shifter cap
- Keyless Open and Start includes 2 remote transmitters that enable automatic door unlock and open by touching door switch
- Theft-deterrent system, electrical, unauthorized entry- Trunk release, power
- Universal Home Remote includes garage door opener, 3-channel programmable
- Visors, driver and front passenger vanity mirrors, covered, illuminated
- Windows, power with driver and passenger Express-Down/Up
- Wireless Charging for devices- Seats, ventilated driver and front passenger
- Seats, heated driver and front passenger
- Seats, Leather-trimmed with sueded inserts front bucket, RECARO performance
- Seat, rear, folding- Seat adjuster, front passenger, 6-way power
- Seat adjuster, driver, 8-way power- Power outlet, 1 located on center console
- Pedals, sporty alloy- Mirror, inside rearview auto-dimming, frameless
- Lighting, interior spectrum 24 different color selections- Lighting, front reading lamps
- Shift knob, sueded microfiber-wrapped- Sill plates, illuminated
- Speedometer, miles/kilometers- Steering column, manual rake and telescopic
- Steering wheel, heated- Steering wheel, sueded microfiber-wrapped, flat-bottom

## Exterior

- Wipers, front variable-speed, intermittent with washers
- Wheels, 20" x 10" (50.8 cm x 25.4 cm) front and 20" x 11" (50.8 cm x 27.9 cm) rear Dark Graphite premium paint, forged aluminum
- Tires, 285/30R20 front and 305/30R20 rear, blackwall, summer-only (Do not use summer only tires in winter conditions, as it would adversely affect vehicle safety, performance and durability. Use only GM-approved tire and wheel combinations. Unapproved combinations may change the vehicle's performance characteristics. For important tire and wheel information, go to <https://my.chevrolet.com/learnAbout/chevrolettires> or see your dealer. )
- Tire inflation kit- Spoiler, rear, sport
- Mirrors, outside heated power-adjustable and driver-side auto-dimming, body-color
- Headlamps, high intensity discharge with automatic exterior lamp control

## Safety

- Air conditioning, dual-zone automatic climate control with individual climate settings for driver and dedicated passenger controls and outside temperature display
- Compass display
- Cruise control, electronic with set and resume speed, steering wheel mounted
- Cup holders, 2 front- Dead pedal, driver- Defogger, rear-window, electric
- Door locks, power programmable with lockout protection
- Driver Information Center, enhanced, 8" diagonal multi-color re-configurable display
- Floor mats, carpeted front- Glovebox, lockable
- Head-Up Display with color digital readouts for vehicle speed, selected gear, G-Force, audio system information, high-beam indicator, compass, outside air temperature, turn signals, tachometer, vehicle messages, Turn-by-Turn information and phone information
- Interior trim, aluminum accents on door trim and shifter cap
- Keyless Open and Start includes 2 remote transmitters that enable automatic door unlock and open by touching door switch
- Theft-deterrent system, electrical, unauthorized entry- Trunk release, power
- Universal Home Remote includes garage door opener, 3-channel programmable
- Visors, driver and front passenger vanity mirrors, covered, illuminated
- Windows, power with driver and passenger Express-Down/Up
- Wireless Charging for devices- Seats, ventilated driver and front passenger
- Seats, heated driver and front passenger
- Seats, Leather-trimmed with sueded inserts front bucket, RECARO performance
- Seat, rear, folding- Seat adjuster, front passenger, 6-way power
- Seat adjuster, driver, 8-way power- Power outlet, 1 located on center console
- Pedals, sporty alloy- Mirror, inside rearview auto-dimming, frameless
- Lighting, interior spectrum 24 different color selections- Lighting, front reading lamps
- Shift knob, sueded microfiber-wrapped- Sill plates, illuminated
- Speedometer, miles/kilometers- Steering column, manual rake and telescopic
- Steering wheel, heated- Steering wheel, sueded microfiber-wrapped, flat-bottom

## Mechanical

- Battery rundown protection
- Brakes, Brembo 6-piston front and 4-piston rear, performance, 4-wheel antilock, 4-wheel disc
- Cooler, engine coolant, auxiliary- Cooler, rear differential- Cooler, transmission oil
- Cooling system, extra capacity- Cooling, external engine oil cooler
- Differential, electronic limited slip (eLSD)
- Driver Selector Mode up to 4 modes available for various driving conditions - Snow/Ice, Tour, Sport and Track (SS and ZL1 models only)
- Engine, 6.2L supercharged V8 DI, VVT (650 hp [485 kW] @ 6400 rpm, 650 lb-ft torque [881N-m] @ 3600 rpm)
- Fueling system, capless- Launch control, custom- Magnetic ride control
- Rear axle, 3.73 ratio (Included with (MN6) 6-speed manual transmission.)
- Rear wheel drive- Steering, power, variable ratio, electric- Suspension, Performance
- Transmission, 6-speed manual (Includes Active Rev Matching.)

## Option Packages

### Factory Installed Packages

ENGINE, 6.2L SUPERCHARGED V8 DI, VVT  
(650 hp [485 kW] @ 6400 rpm,  
650 lb-ft torque [881N-m] @  
3600 rpm)

TRANSMISSION, 6-SPEED MANUAL  
(Includes Active Rev Matching.)

-  
**ZL1 1LE EXTREME TRACK  
PERFORMANCE PACKAGE**

includes (FEA) Performance  
Suspension with DSSV  
dampers, Red calipers, (DSM)  
Satin Black hood wrap, (CFW)  
exposed Carbon Fiber weave  
hood insert, (T42) exposed  
weave carbon fiber rear spoiler,  
low-gloss Black outside  
rearview mirrors, dark tail  
lamps, front dive planes,  
unique front splitter with lower  
DRL deleted, (R6O)  
305/30R19 front and  
325/30R19 rear, blackwall,  
summer-only tires, (PKJ) 19" x  
11" front and 19" x 12" rear low  
gloss Black-painted forged  
aluminum wheels and (A62)  
rear fixed seat

\$7,500

-  
**AUDIO SYSTEM, CHEVROLET MYLINK  
RADIO WITH NAVIGATION AND 8"  
DIAGONAL COLOR TOUCH-SCREEN,  
AM/FM STEREO WITH SEEK-AND-  
SCAN AND DIGITAL CLOCK**

includes Bluetooth streaming  
audio for music and select  
phones: voice-activated  
technology for radio and  
phone; featuring Android Auto  
and Apple CarPlay capability  
for compatible phone and Shop  
with the ability to browse,  
select and install apps to your  
vehicle. Apps include Pandora,  
iHeartRadio, The Weather  
Channel and more

\$495

-  
Option Packages Total

\$7,995

---

Texas Vehicle Exchange

[tveauto.com](http://tveauto.com)

972-242-5350

1724 Luna Road

Carrollton, TX 75006

© 2019 AutoRevo - All rights reserved. - Powered by AutoRevo