



2013 Ford Super Duty F-350 SRW Pickup XL

Our Price \$22,900

View this vehicle on our website at intermarketstrading.com



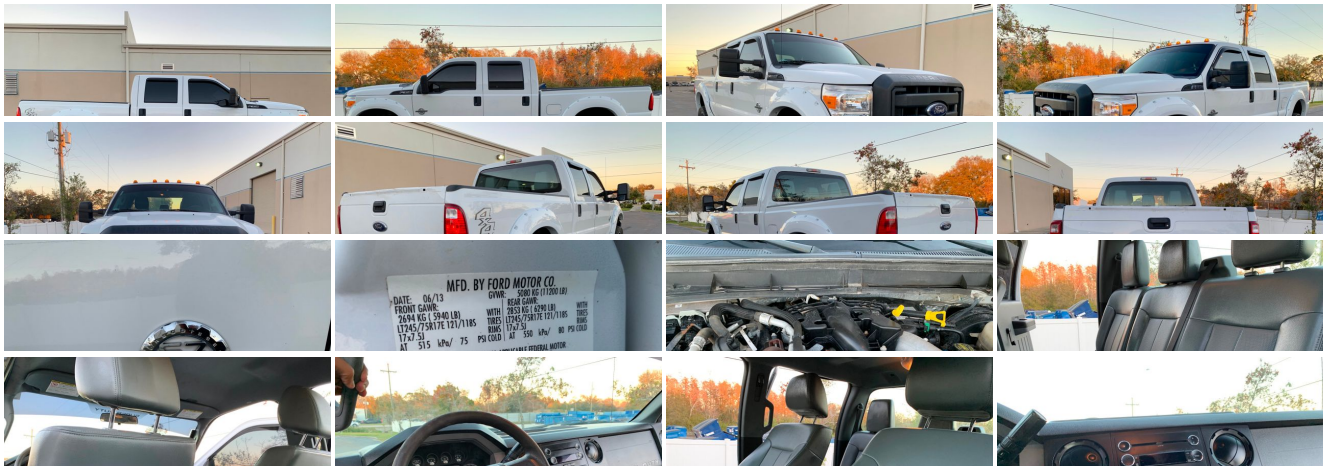
7276579048

5516 W Linebaugh Ave , Tampa, FL 33624

Photos

Details

Contact





Specifications:

Year:	2013
VIN:	1FT8W3BT7DEB71413
Make:	Ford
Model/Trim:	Super Duty F-350 SRW Pickup XL
Condition:	Pre-Owned
Body:	Pickup Truck
Exterior:	Oxford White
Engine:	6.7L 32-VALVE PWR STROKE V8 TURBO DIESEL ENGINE
Interior:	Gray
Mileage:	103,900
Drivetrain:	4 Wheel Drive

Vehicle Description

Salvage Title For out Of Florida State Buyers. Car Had an accident at the bed only no frame damage no airbag deployed

Installed Options

Interior

- Air conditioning
- HD vinyl 40/20/40 split bench front seat -inc: center armrest, cupholder, storage
- (2) aux pwr outlets in instrument panel - (4) air registers w/positive shut-off
- 3-blink lane change signal- Black vinyl full-floor covering- Color-keyed cloth headliner
- Color-keyed molded door trim panel-inc: hard armrest, grab handle, reflector
- Color-keyed scuff plates- Dash-top tray- Driver & front passenger grab handles
- Driver manual lumbar support- Dual color-keyed coat hooks
- Dual color-keyed vinyl sunvisors-inc: driver-side pocket, passenger-side mirror insert
- Front door operated dome lamp w/time delay off & IP switch
- Front passenger-side roof ride handle- Front/rear map lamps- Glove box
- Instrument panel mounted storage
- Multifunction switch message center -inc: ice blue lighting, 3-button message control on steering wheel, outside temp display
- Overhead console- Rear seating roof ride handles
- SecuriLock passive anti-theft system (PATS)- Tilt/telescoping steering column
- Vinyl 60/40 flip-up/fold-down rear split bench seat -inc: (3) head restraints

Exterior

- (4) 17" argent painted steel wheels -inc: painted hub covers & center ornaments
- (5) LT245/75R17E all-season BSW tires- Full-size spare tire w/lock & carrier
- Black door handles- Black molded-in-color grille- Black painted rear bumper
- Black painted steel front bumper w/grained molded-in-color top cover & black lower air dam
- Box-rail & tailgate top-edge moldings- Dual beam jewel-effect headlamps
- Front fender vents- Front/rear license plate brackets
- Manual telescoping trailer tow mirrors w/manual glass- Pickup box/cargo lights
- Removable locking tailgate w/black handle & TailGate Assist - Solar tinted glass
- Underhood service light- Variable intermittent windshield wipers

Safety

- Air conditioning
- HD vinyl 40/20/40 split bench front seat -inc: center armrest, cupholder, storage
- (2) aux pwr outlets in instrument panel - (4) air registers w/positive shut-off
- 3-blink lane change signal- Black vinyl full-floor covering- Color-keyed cloth headliner
- Color-keyed molded door trim panel-inc: hard armrest, grab handle, reflector
- Color-keyed scuff plates- Dash-top tray- Driver & front passenger grab handles
- Driver manual lumbar support- Dual color-keyed coat hooks
- Dual color-keyed vinyl sunvisors-inc: driver-side pocket, passenger-side mirror insert
- Front door operated dome lamp w/time delay off & IP switch
- Front passenger-side roof ride handle- Front/rear map lamps- Glove box
- Instrument panel mounted storage
- Multifunction switch message center -inc: ice blue lighting, 3-button message control on steering wheel, outside temp display
- Overhead console- Rear seating roof ride handles
- SecuriLock passive anti-theft system (PATS)- Tilt/telescoping steering column
- Vinyl 60/40 flip-up/fold-down rear split bench seat -inc: (3) head restraints

Mechanical

- 12.5K trailer hitch receiver -inc: 2" hitch
- 6.2L SOHC 16-valve EFI NA V8 flex-fuel engine
- TorqShift 6-speed SelectShift automatic transmission w/tow/haul mode (REQ: 996 Engine)
- (2) front tow hooks- 157-amp HD alternator- 2-ton mechanical jack
- 3.73 axle ratio (REQ: 996 Engine)- 4-wheel drive
- 6-3/4' pickup box -inc: (4) tie-down hooks, partitionable & stackable storage
- 72 amp/hr (650 CCA) battery- Front stabilizer bar- HD gas shock absorbers
- Intelligent oil life minder- Manual transfer case & hubs
- Mono-beam front axle w/coil spring suspension- Pwr steering w/steering damper
- Rear auxiliary springs- Stationary elevated engine idle control (SEIC)
- Trailer tow pkg -inc: 7-wire harness w/relays, 7/4 pin combination connector

Option Packages

Factory Installed Packages

6.7L 32-VALVE PWR STROKE V8 TURBO DIESEL ENGINE	
-inc: 750 CCA 78-AH dual batteries, 14K trailer hitch receiver w/2.5" trailer hitch & 2" sleeve reducer	\$8,095

Option Packages Total	\$8,095
-----------------------	---------

Intermarkets Trading CO

View this car on our website at intermarketstrading.com/6576644

Website: intermarketstrading.com

Phone: [7276579048](tel:7276579048)

Map: [5516 W Linebaugh Ave, Tampa, FL 33624](#)

