

2017 Ford Super Duty F-350 SRW Pickup Platinum

Sales Department (928) 763-1633

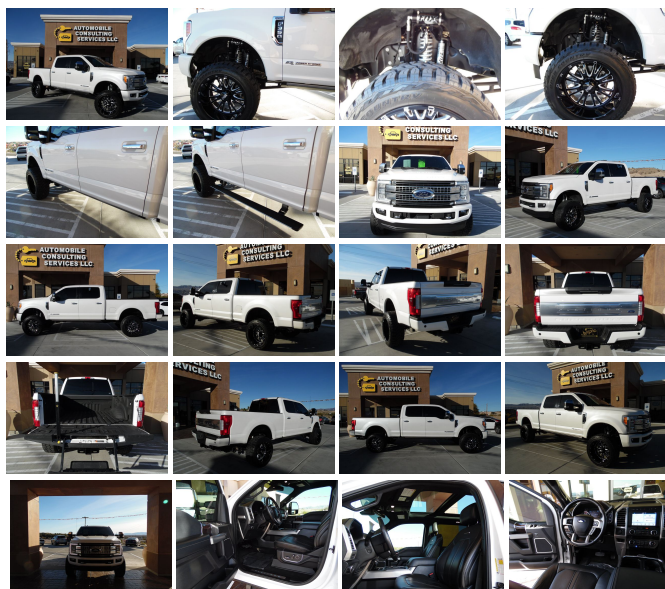
View this car on our website at automobileconsultingservices.com/6573389/ebrochure



Our Price **\$63,995**

Specifications:


Year: 2017
VIN: 1FT8W3BT2HEB77917
Make: Ford
Model/Trim: Super Duty F-350 SRW Pickup Platinum
Condition: Pre-Owned
Body: Pickup Truck
Exterior: White Platinum Metallic Tri-Coat
Engine: ENGINE: 6.7L POWER STROKE V8
TURBO DIESEL B20
Interior: Black Leather
Mileage: 38,389
Drivetrain: 4 Wheel Drive







2017 Ford Super Duty F-350 SRW Pickup Platinum

Automobile Consulting Services - (928) 763-1633 - View this car on our website at automobileconsultingservices.com/6573389/ebrochure

Vehicle History Report : as Of 02/20/2019

 Snapshot

2017 FORD F350 SUPER DUTY

	No accidents reported to CARFAX
	No damage reported to CARFAX
	CARFAX 1-Owner vehicle
	3 Service history records
	Commercial vehicle
	38,388 Last reported odometer reading



FREE CARFAX Report

See the full CARFAX Report for additional information

*carfax Snapshot is a reflection of available information on the date the report was pulled. carfax is constantly being updated with new information and is subject to change at any time.

Our Location :



2017 Ford Super Duty F-350 SRW Pickup Platinum

Automobile Consulting Services - (928) 763-1633 - View this car on our website at automobileconsultingservices.com/6573389/ebrochure

Installed Options

Interior

- 110V/400W Outlet -inc: 1 in-dash mounted outlet - 2 Seatback Storage Pockets
- 4 12V DC Power Outlets- Air Filtration- Cruise Control w/Steering Wheel Controls
- Day-Night Auto-Dimming Rearview Mirror- Delayed Accessory Power
- Door Mirrors, Steering Wheel and Pedals
- Driver And Passenger Visor Vanity Mirrors w/Driver And Passenger Illumination
- Driver Seat- FOB Controls -inc: Trunk/Hatch/Tailgate and Remote Engine Start
- Fade-To-Off Interior Lighting- Flow-Through Console -inc: 110V/400W outlet in rear
- Front And Rear Map Lights- Front Center Armrest- Front Cupholder
- Full Carpet Floor Covering -inc: Carpet Front And Rear Floor Mats - Full Cloth Headliner
- Full Overhead Console w/Storage and 4 12V DC Power Outlets - Garage Door Transmitter
- Gauges -inc: Speedometer, Odometer, Oil Pressure, Engine Coolant Temp, Tachometer, Transmission Fluid Temp, Engine Hour Meter, Trip Odometer and Trip Computer
- HVAC -inc: Underseat Ducts and Console Ducts
- Heated Leather Steering Wheel w/Auto Tilt-Away- Illuminated Locking Glove Box
- Instrument Panel Bin, Covered Dashboard Storage, Driver / Passenger And Rear Door Bins
- Integrated Navigation System w/Voice Activation
- Interior Trim -inc: Metal-Look Instrument Panel Insert, Genuine Wood/Chrome Door Panel Insert, Genuine Wood/Leather Console Insert and Chrome/Metal-Look Interior Accents
- Keypad- Leather Door Trim Insert- Manual Adjustable Rear Head Restraints
- Outside Temp Gauge- Passenger Seat- Perimeter Alarm
- Power 1st Row Windows w/Driver And Passenger 1-Touch Up/Down
- Power Adjustable Pedals- Power Door Locks w/Autolock Feature- Power Rear Windows
- Power Tilt/Telescoping Steering Column- Proximity Key For Doors And Push Button Start
- Rear Cupholder
- Remote Keyless Entry w/Integrated Key Transmitter, Illuminated Entry and Panic Button
- Securilock Anti-Theft Ignition (pats) Engine Immobilizer
- Split-Bench Front Facing Rear Seat- Systems Monitor- Trip Computer
- Underhood And Pickup Cargo Box Lights

- Unique Platinum Leather 40/Console/40 Seats -inc: multi-contour, heated/cooled, 10-way power driver and passenger seats (includes power lumbar), memory, 4-way adjustable driver and passenger headrests and second row armrest
- Urethane Gear Shift Knob
- Voice Activated Dual Zone Front Automatic Air Conditioning w/Steering Wheel Controls

Exterior

- Aluminum Grille- Aluminum Panels
- Black Side Windows Trim and Black Front Windshield Trim
- Body-Colored Front Bumper w/2 Tow Hooks- Body-Colored Rear Step Bumper
- Cargo Lamp w/High Mount Stop Light- Chrome Door Handles
- Chrome Power Heated Side Mirrors w/Convex Spotter, Power Folding and Turn Signal Indicator
- Clearcoat Paint- Deep Tinted Glass- Front Fog Lamps- Front License Plate Bracket
- Full-Size Spare Tire Stored Underbody w/Crankdown
- Fully Automatic Aero-Composite Led Low/High Beam Auto High-Beam Daytime Running Lights Preference Setting Headlamps w/Delay-Off
- LED Brakelights- Perimeter/Approach Lights- Power Extendable Trailer Style Mirrors
- Power Rear Window w/Defroster- Power Running Boards
- Rain Detecting Variable Intermittent Wipers- Regular Box Style- Retractable Rear Step
- Steel Spare Wheel- Tailgate Rear Cargo Access
- Tailgate/Rear Door Lock Included w/Power Door Locks
- Tires: LT275/65Rx20E OWL A/T (4) -inc: LT275/70Rx18E BSW A/T spare tire
- Wheels: 20" Polished Aluminum

Safety

- 110V/400W Outlet -inc: 1 in-dash mounted outlet - 2 Seatback Storage Pockets
- 4 12V DC Power Outlets- Air Filtration- Cruise Control w/Steering Wheel Controls
- Day-Night Auto-Dimming Rearview Mirror- Delayed Accessory Power
- Door Mirrors, Steering Wheel and Pedals
- Driver And Passenger Visor Vanity Mirrors w/Driver And Passenger Illumination
- Driver Seat- FOB Controls -inc: Trunk/Hatch/Tailgate and Remote Engine Start
- Fade-To-Off Interior Lighting- Flow-Through Console -inc: 110V/400W outlet in rear
- Front And Rear Map Lights- Front Center Armrest- Front Cupholder
- Full Carpet Floor Covering -inc: Carpet Front And Rear Floor Mats - Full Cloth Headliner
- Full Overhead Console w/Storage and 4 12V DC Power Outlets - Garage Door Transmitter
- Gauges -inc: Speedometer, Odometer, Oil Pressure, Engine Coolant Temp, Tachometer, Transmission Fluid Temp, Engine Hour Meter, Trip Odometer and Trip Computer
- HVAC -inc: Underseat Ducts and Console Ducts
- Heated Leather Steering Wheel w/Auto Tilt-Away- Illuminated Locking Glove Box
- Instrument Panel Bin, Covered Dashboard Storage, Driver / Passenger And Rear Door Bins
- Integrated Navigation System w/Voice Activation
- Interior Trim -inc: Metal-Look Instrument Panel Insert, Genuine Wood/Chrome Door Panel Insert, Genuine Wood/Leather Console Insert and Chrome/Metal-Look Interior Accents
- Keypad- Leather Door Trim Insert- Manual Adjustable Rear Head Restraints
- Outside Temp Gauge- Passenger Seat- Perimeter Alarm
- Power 1st Row Windows w/Driver And Passenger 1-Touch Up/Down
- Power Adjustable Pedals- Power Door Locks w/Autolock Feature- Power Rear Windows
- Power Tilt/Telescoping Steering Column- Proximity Key For Doors And Push Button Start
- Rear Cupholder
- Remote Keyless Entry w/Integrated Key Transmitter, Illuminated Entry and Panic Button
- Securilock Anti-Theft Ignition (pats) Engine Immobilizer
- Split-Bench Front Facing Rear Seat- Systems Monitor- Trip Computer
- Underhood And Pickup Cargo Box Lights
- Unique Platinum Leather 40/Console/40 Seats -inc: multi-contour, heated/cooled, 10-way power driver and passenger seats (includes power lumbar), memory, 4-way adjustable driver and passenger headrests and second row armrest
- Urethane Gear Shift Knob
- Voice Activated Dual Zone Front Automatic Air Conditioning w/Steering Wheel Controls

Mechanical

- 3.73 Axle Ratio- 34 Gal. Fuel Tank
- 4-Wheel Disc Brakes w/4-Wheel ABS, Front And Rear Vented Discs, Brake Assist and Hill Hold Control
- 4470# Maximum Payload- 50-State Emissions System
- 78-Amp/Hr 750CCA Maintenance-Free Battery w/Run Down Protection
- Auto Locking Hubs
- Class V Towing Equipment -inc: Harness, Hitch, Brake Controller and Trailer Sway Control
- Electronic Transfer Case- Engine: 6.2L 2-Valve SOHC EFI NA V8 Flex-Fuel
- Firm Suspension- Front Anti-Roll Bar- Front Suspension w/Coil Springs
- GVWR: 11,300 lb Payload Package- HD 200 Amp Alternator- HD Shock Absorbers

- Hydraulic Power-Assist Speed-Sensing Steering Leaf Rear Suspension w/Leaf Springs
- Part-Time Four-Wheel Drive- Single Stainless Steel Exhaust w/Chrome Tailpipe Finisher
- Transmission w/Oil Cooler
- Transmission: TorqShift 6-Speed Automatic (6R140) -inc: SelectShift

Option Packages

Factory Installed Packages

ENGINE: 6.7L POWER STROKE V8

TURBO DIESEL B20

-inc: 4 valve OHV, manual push-button engine-exhaust braking and intelligent oil-life monitor.
GVWR: 11,500 lb Payload Package, 3.55 Axle Ratio, 34 Gallon Fuel Tank, Extra Heavy-Duty 220 Amp Alternator, Dual 78-AH 750 CCA Batteries

\$8,795

WHITE PLATINUM METALLIC TRI-COAT

\$595

BLACK, UNIQUE PLATINUM LEATHER

40/CONSOLE/40 SEATS

-inc: multi-contour, heated/cooled, 10-way power driver and passenger seats (includes power lumbar), memory, 4-way adjustable driver and passenger headrests and second row armrest

Option Packages Total

\$9,390

O.A.C.

Automobile Consulting Services
automobileconsultingservices.com
 (928) 763-1633

2691 S Miracle Mile
 Bullhead City, AZ 86442-6452

© 2019 AutoRevo - All rights reserved. - Powered by AutoRevo