



2006 LAND ROVER RANGE ROVER SC NAVIGATION SERVICE RECORDS!

Our Price \$7,990

Retail Value \$10,519

View this vehicle on our website at boutiqueautosales.com

Boutique Auto Sales

[310-987-1212](tel:310-987-1212)

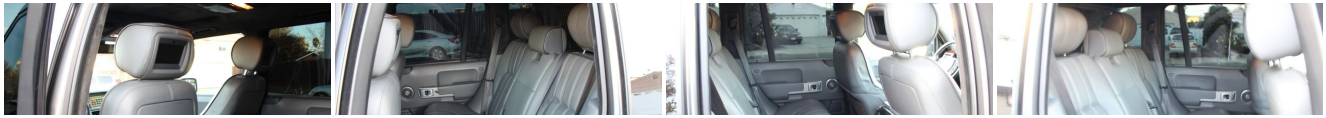
5950 Laurel Canyon Blvd, North Hollywood, CA 91607

Photos

Details

Contact





Specifications:

Year:	2006
VIN:	SALMF13456A222565
Make:	LAND ROVER
Model/Trim:	RANGE ROVER SC NAVIGATION SERVICE RECORDS!
Condition:	Pre-Owned
Body:	SUV
Exterior:	Bonatti Grey
Engine:	4.2L SMPI 32-valve supercharged V8 engine
Interior:	Charcoal Leather
Mileage:	116,197
Economy:	City 13 / Highway 18

Vehicle Description

22 SERVICE RECORDS ON CARFAX
CUSTOM HEADLIGHTS AND TAIL LIGHTS
SUEDE HEADLINER
MAGNAFLOW EXHAUST

Installed Options

Interior

- 16-way driver/passenger pwr heated contour seats w/memory
- 3-driver memory-inc: driver seat, steering column, exterior mirrors
- Blenheim leather seat facings & trim details
- Grand Black wood trim-inc: center console, fascia, doors
- Pwr central locking doors/tailgate/fuel filler door w/"superlocking" feature
- Vehicle security system w/keyless entry
- "Convenience Close" for windows & sunroof that closes all w/one action
- 60/40 split folding rear seat w/adjustable head restraints
- 710-watt Harman/Kardon LOGIC7 audio system-inc: AM/FM stereo, 6-disc CD changer, cassette, (14) speakers
- Auto-dimming rearview mirror- Center armrest integrated ski bag
- Center console storage bin- Cruise control w/steering wheel mounted controls
- Cupholders-inc: (3) front, (2) rear- Dual glass-mounted antenna system
- Dual-blade sun visors- Foldable/removable rear loadspace cover
- Front seatback storage pockets- Front/rear door map pockets
- Front/rear park distance control- Front/rear window defogger
- GPS off-road enhanced navigation system-inc: touchscreen interface, 4x4 driver info
- Heated steering wheel- Homelink system for garage doors & security gates
- Instrumentation-inc: tachometer, fuel filler door indicator, comprehensive message center w/trip computer, analog clock
- Leather-wrapped pwr tilt/telescopic steering wheel w/automatic tilt-away
- Outside temp display- Overhead sunglasses holder
- Personal telephone integration system w/bluetooth technology
- Pwr windows-inc: retained accessory pwr, one-touch open/close, anti-trap feature
- Rearview camera- Removable luggage net- Steering wheel mounted audio controls
- Tire pressure monitoring system (TPMS)
- Triple-zone automatic climate control-inc: pollen filter, programmed defrost
- Voice control for navigation, audio, telephone

Exterior

Option Packages

Factory Installed Packages

REAR SEAT ENTERTAINMENT PKG -inc: integrated 6.5" LCD displays in rear of front headrests, 6-disc DVD changer, (2) wireless headphones, touchscreen interface, remote control	\$2,500
Option Packages Total	\$2,500

- Adaptive front lighting system (AFS)
- Bi-Xenon single-piece headlamps w/auto headlamps, pwr washers
- Clear tail lamps-inc: turn signal & brake lamp- Deep-tinted glass aft of B-pillar
- Diamond mesh front grille & pwr vents - Front/rear fog lamps
- Intermittent rear window washer/wiper- Laminated exterior glass panels
- Pwr folding heated mirrors
- Pwr sunroof-inc: deep-tinted glass, retained accessory pwr, one-touch open/close, anti-trap feature
- Silver on black Land Rover ovals & "Supercharged" exterior badge - Split tailgate
- Variable intermittent front windshield wipers

Safety

- 16-way driver/passenger pwr heated contour seats w/memory
- 3-driver memory-inc: driver seat, steering column, exterior mirrors
- Blenheim leather seat facings & trim details
- Grand Black wood trim-inc: center console, fascia, doors
- Pwr central locking doors/tailgate/fuel filler door w/"superlocking" feature
- Vehicle security system w/keyless entry
- "Convenience Close" for windows & sunroof that closes all w/one action
- 60/40 split folding rear seat w/adjustable head restraints
- 710-watt Harman/Kardon LOGIC7 audio system-inc: AM/FM stereo, 6-disc CD changer, cassette, (14) speakers
- Auto-dimming rearview mirror- Center armrest integrated ski bag
- Center console storage bin- Cruise control w/steering wheel mounted controls
- Cupholders-inc: (3) front, (2) rear- Dual glass-mounted antenna system
- Dual-blade sun visors- Foldable/removable rear loadspace cover
- Front seatback storage pockets- Front/rear door map pockets
- Front/rear park distance control- Front/rear window defogger
- GPS off-road enhanced navigation system-inc: touchscreen interface, 4x4 driver info
- Heated steering wheel- Homelink system for garage doors & security gates
- Instrumentation-inc: tachometer, fuel filler door indicator, comprehensive message center w/trip computer, analog clock
- Leather-wrapped pwr tilt/telescopic steering wheel w/automatic tilt-away
- Outside temp display- Overhead sunglasses holder
- Personal telephone integration system w/bluetooth technology
- Pwr windows-inc: retained accessory pwr, one-touch open/close, anti-trap feature
- Rearview camera- Removable luggage net- Steering wheel mounted audio controls
- Tire pressure monitoring system (TPMS)
- Triple-zone automatic climate control-inc: pollen filter, programmed defrost
- Voice control for navigation, audio, telephone

Mechanical

- 4-channel 4-wheel all-terrain anti-lock brakes (ABS)
- 4-wheel electronic traction control (4ETC)- Dynamic stability control (DSC)
- 150 amp liquid-cooled alternator
- 2-speed electronic transfer gearbox-inc: Torsen torque-sensing center differential, shift-on-the-move capability
- 20" x 8.5" aluminum alloy wheels - 255/50R20 tires- 27.6 gallon fuel tank
- 4.2L SMPI 32-valve supercharged V8 engine
- 6-speed automatic transmission w/OD-inc: normal/sport/manual shift modes, CommandShift locking torque converter
- Air suspension system (4CAS)-inc: automatic load-leveling, multiple modes, terrain-sensing software & cross-link valves for improved off-road performance
- Cornering brake control (CBC)
- Distributorless ignition system-inc: 4 knock sensors, dual mode electronic throttle, engine drag torque control
- Double-wishbone rear suspension-inc: gas filled shock absorbers, stabilizer bar
- Electronic brakeforce distribution (EBD)- Emergency brake assist (EBA)
- Four-piston Brembo brand front brakes- Full-size spare tire- Hill descent control (HDC)
- Integral class III trailer towing hitch receiver
- MacPherson strut front suspension-inc: double-pivot lower arms, gas filled shock absorbers, stabilizer bar
- Monocoque integrated body/chassis w/(3) steel subframes - One-touch engine starting
- Permanent 4-wheel drive- Pwr rack & pinion steering
- Pwr ventilated front, solid rear disc brakes- Supercharged unique suspension calibration

Boutique Auto Sales

Boutique Auto Sales

View this car on our website at boutiqueautosales.com/6570927

Website: boutiqueautosales.com

Phone: [310-987-1212](tel:310-987-1212)

Map: [5950 Laurel Canyon Blvd, North Hollywood, CA 91607](#)

