

# 2018 Jeep Wrangler JL Unlimited Sport 4X4 LIFTED,LED'S,HTD LTH,ALPINE!

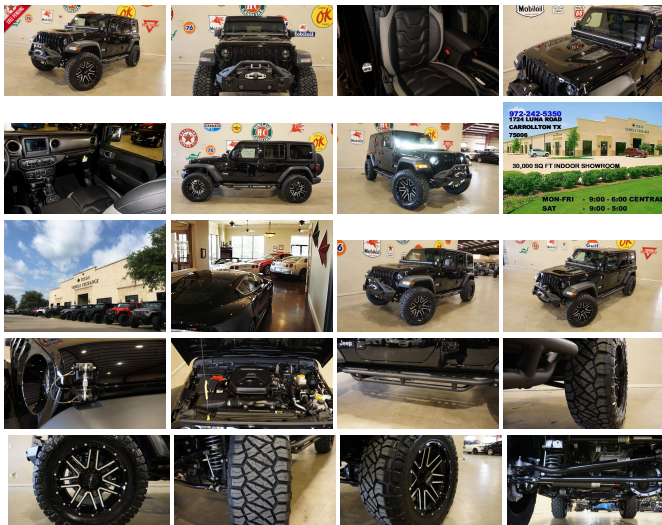
View this car on our website at [tveauto.com/6569682/ebrochure](http://tveauto.com/6569682/ebrochure)



Our Price **\$54,900**

## Specifications:

Year:	2018
VIN:	1C4HJXDNXJW235275
Make:	Jeep
Stock:	235275
Model/Trim:	Wrangler JL Unlimited Sport 4X4 LIFTED,LED'S,HTD LTH,ALPINE!
Condition:	Pre-Owned
Body:	SUV
Exterior:	Black Clearcoat
Engine:	ENGINE: 2.0L I4 DOHC DI TURBO ETORQUE
Interior:	Black Leather
Transmission:	TRANSMISSION: 8-SPEED AUTOMATIC (850RE)
Mileage:	80
Drivetrain:	4 Wheel Drive
Economy:	City 17 / Highway 23



NATION WIDE FINANCING

SUBMIT CREDIT APP [WWW.TVEAUTO.COM](http://WWW.TVEAUTO.COM)

OR CALL 972-242-5350

**"BLACK CLEAR COAT EDITION"**

CUSTOM BUILT 2018 JEEP WRANGLER JL  
UNLIMITED SPORT 4X4 WITH 28S PACKAGE

**UPGRADES INCLUDE:**

- \* BLACK CLEAR COAT
- \* CUSTOM ALEA BLACK LEATHER WITH SILVER STITCHING
- \* HEATED FRONT SEATS
- \* FACTORY REMOTE START
- \* CONVENIENCE GROUP
- \* FACTORY 7.0 INCH TOUCH SCREEN WITH AM/FM/SIRIUS STEREO & ALPINE PREMIUM AUDIO SYSTEM
- \* FACTORY BACK-UP CAMERA
- \* U-CONNECT
  
- \* DV8 OFF ROAD HAMMER FORGED FRONT BUMPER WITH LED FOGLIGHTS
- \* FRONT D-RINGS & ISOLATORS (BLACK)
- \* SMITTYBILT NEW GEN II "X20" 10,000 LB WATERPROOF AND WIRELESS CONTROL WINCH WITH SYNTHETIC ROPE
- \* FACTORY 55 PROLINK (BLACK)
- \* EVOLUTION 2 LED HEADLIGHTS
- \* FACTORY MESH GRILLE PAINTED BLACK
- \* MOPAR 10TH ANNIVERSARY RUBICON POWER DOME HOOD ( PAINTED TO MATCH )
- \* DRAKE OFF ROAD HOOD LATCHES
- \* RUBICON EXPRESS 2.5" LIFT KIT WITH TERAFLEX FALCON SHOCKS
- \* TEREFLX FALCON STABILIZER KIT
- \* MOPAR AUXILIARY SWITCH BANK KIT
  
- \* 50" LED LIGHT BAR AND 4 RIGID INDUSTRIES DUALY D2 LED PILLAR LIGHTS
  
- \* SMITTYBILT BLACK TUBULAR STEPS
- \* MOPAR BLACK FUEL DOOR
- \* SMITTYBILT SPARE TIRE ADAPTOR

- \* ALL WEATHER FLOOR MATS
- \* SUPERCHIPS FLASHCAL PROGRAMMER
- \* 20" TUFF A.T. GLOSS BLACK & MILLED "T17" WHEELS
- \* BRAND NEW NITTO RIDGE GRAPPLER 35X12.50R/20 TIRES

**WE BUILD EVERY JEEP WITH PRIDE! DO NOT HESITATE TO CALL US WITH THIS JEEP BUILD. WE CAN MAKE CHANGES TO THIS JEEP BUILD OR CUSTOM BUILD ANY JEEP TO YOUR PREFERENCE. GIVE US A CALL @ 972-242-5350 OR STOP BY FOR A TEST DRIVE. 1724 LUNA RD IN CARROLLTON - 2 MILES NORTH OF 635.**

---

2018 Jeep Wrangler JL Unlimited Sport 4X4 LIFTED,LED'S,HTD LTH,ALPINE!  
Texas Vehicle Exchange - 972-242-5350 - View this car on our website at [veauto.com/6569682/ebrochure](http://veauto.com/6569682/ebrochure)

**Our Location :**



---

2018 Jeep Wrangler JL Unlimited Sport 4X4 LIFTED,LED'S,HTD LTH,ALPINE!  
Texas Vehicle Exchange - 972-242-5350 - View this car on our website at [veauto.com/6569682/ebrochure](http://veauto.com/6569682/ebrochure)

# Installed Options

## Interior

- 2 12V DC Power Outlets- 2 Seatback Storage Pockets
- 4-Way Passenger Seat -inc: Manual Recline and Fore/Aft Movement
- 6-Way Driver Seat -inc: Manual Recline, Height Adjustment, Fore/Aft Movement and Manual Lumbar Support
- 60-40 Folding Split-Bench Front Facing Fold Forward Seatback Cloth Rear Seat
- Analog Display- Cargo Space Lights- Carpet Floor Trim, Carpet And Rubber Mat
- Cloth Low-Back Bucket Seats- Compass- Cruise Control w/Steering Wheel Controls
- Day-Night Rearview Mirror- Delayed Accessory Power- Fade-To-Off Interior Lighting
- Front And Rear Map Lights- Front Center Armrest w/Storage
- Front Seats w/Cloth Back Material and Manual Driver Lumbar
- Full Carpet Floor Covering -inc: Carpet Front And Rear Floor Mats
- Full Floor Console w/Locking Storage and 2 12V DC Power Outlets
- Gauges -inc: Speedometer, Odometer, Engine Coolant Temp, Tachometer, Engine Hour Meter, Trip Odometer and Trip Computer
- HVAC -inc: Console Ducts- Illuminated Front Cupholder- Illuminated Rear Cupholder
- Instrument Panel Bin, Dashboard Storage, Driver / Passenger And Rear Door Bins
- Interior Trim -inc: Metal-Look Instrument Panel Insert and Metal-Look Console Insert
- Locking Cargo Area Concealed Storage- Locking Glove Box
- Manual Adjustable Front Head Restraints and Foldable Rear Head Restraints
- Manual Air Conditioning- Manual Tilt/Telescoping Steering Column
- Outside Temp Gauge- Proximity Key For Push Button Start Only
- Redundant Digital Speedometer- Removable 3rd Row Windows
- Sentry Key Engine Immobilizer- Systems Monitor- Trip Computer
- Urethane Gear Shift Knob- Vanity w/Driver And Passenger Auxiliary Mirror

## Exterior

- Aero-Composite Halogen Headlamps w/Delay-Off- Black Door Handles
- Black Fender Flares- Black Front Bumper w/2 Tow Hooks
- Black Rear Bumper w/1 Tow Hook- Black Side Windows Trim- Body-Colored Grille
- Clearcoat Paint- Conventional Rear Cargo Access- Deep Tint Sunscreen Windows
- Front Fog Lamps- Full-Size Spare Tire Mounted Outside Rear
- Galvanized Steel/Aluminum/Magnesium Panels
- Manual Convertible Top w/Fixed Roll-Over Protection
- Non-Lock Fuel Cap w/o Discriminator- Removable Rear Window
- Tires: 245/75R17 All Season- Variable Intermittent Wipers
- Wheels: 17" x 7.5" Tech Silver Aluminum

## Safety

- 2 12V DC Power Outlets- 2 Seatback Storage Pockets
- 4-Way Passenger Seat -inc: Manual Recline and Fore/Aft Movement
- 6-Way Driver Seat -inc: Manual Recline, Height Adjustment, Fore/Aft Movement and Manual Lumbar Support
- 60-40 Folding Split-Bench Front Facing Fold Forward Seatback Cloth Rear Seat
- Analog Display- Cargo Space Lights- Carpet Floor Trim, Carpet And Rubber Mat
- Cloth Low-Back Bucket Seats- Compass- Cruise Control w/Steering Wheel Controls
- Day-Night Rearview Mirror- Delayed Accessory Power- Fade-To-Off Interior Lighting
- Front And Rear Map Lights- Front Center Armrest w/Storage
- Front Seats w/Cloth Back Material and Manual Driver Lumbar
- Full Carpet Floor Covering -inc: Carpet Front And Rear Floor Mats
- Full Floor Console w/Locking Storage and 2 12V DC Power Outlets
- Gauges -inc: Speedometer, Odometer, Engine Coolant Temp, Tachometer, Engine Hour Meter, Trip Odometer and Trip Computer
- HVAC -inc: Console Ducts- Illuminated Front Cupholder- Illuminated Rear Cupholder
- Instrument Panel Bin, Dashboard Storage, Driver / Passenger And Rear Door Bins
- Interior Trim -inc: Metal-Look Instrument Panel Insert and Metal-Look Console Insert
- Locking Cargo Area Concealed Storage- Locking Glove Box
- Manual Adjustable Front Head Restraints and Foldable Rear Head Restraints
- Manual Air Conditioning- Manual Tilt/Telescoping Steering Column
- Outside Temp Gauge- Proximity Key For Push Button Start Only
- Redundant Digital Speedometer- Removable 3rd Row Windows
- Sentry Key Engine Immobilizer- Systems Monitor- Trip Computer
- Urethane Gear Shift Knob- Vanity w/Driver And Passenger Auxiliary Mirror

## Mechanical

- 1000# Maximum Payload- 180 Amp Alternator- 21.5 Gal. Fuel Tank- 3 Skid Plates

- 1000/maximum speed 100 mph/alternator 270 amp/cool fans 3 and 4 fans
- 3.45 Rear Axle Ratio
- 4-Wheel Disc Brakes w/4-Wheel ABS, Front Vented Discs, Brake Assist and Hill Hold Control
- 50 State Emissions- 650CCA Maintenance-Free Battery w/Run Down Protection
- Auto Locking Hubs- Brake Actuated Limited Slip Differential
- Electro-Hydraulic Power Assist Steering- Engine Auto Stop-Start Feature
- Engine Oil Cooler- Engine: 3.6L V6 24V VVT UPG I w/ESS
- Front And Rear Anti-Roll Bars- GVWR: 5,300 lbs- Gas-Pressurized Shock Absorbers
- Leading Link Front Suspension w/Coil Springs- Manual Transfer Case
- Normal Duty Suspension- Part-Time Four-Wheel Drive- Single Stainless Steel Exhaust
- Towing Equipment -inc: Trailer Sway Control
- Trailing Arm Rear Suspension w/Coil Springs- Transmission: 6-Speed Manual

## Option Packages

### Factory Installed Packages

---

#### ENGINE: 2.0L I4 DOHC DI TURBO

##### ETORQUE

-inc: GVWR: 5,400 lbs, Delete Alternator, 700 Amp Maintenance Free Battery, Supplemental Heater, 48V Belt Starter Generator	<b>\$1,000</b>
---	----------------

---

#### TRANSMISSION: 8-SPEED AUTOMATIC (850RE)

-inc: Dana M200 Rear Axle, Hill Descent Control, Tip Start	<b>\$2,000</b>
--	----------------

---

#### ALPINE PREMIUM AUDIO SYSTEM

-inc: 220 Amp Alternator	<b>\$1,295</b>
--------------------------	----------------

---

#### BLACK 3-PIECE HARD TOP

-inc: Rear Window Defroster, Freedom Panel Storage Bag, Rear Window Wiper/Washer	<b>\$1,195</b>
--	----------------

---

#### CONVENIENCE GROUP

-inc: Universal Garage Door Opener	<b>\$595</b>
------------------------------------	--------------

---

#### TECHNOLOGY GROUP

-inc: USB Host Flip, Google Android Auto, Air Conditioning w/Auto Temp Control, Radio: Uconnect 4 w/7" Display, 7.0" Touchscreen Display, GPS Antenna Input, Air Filtering, Cluster 7.0" TFT Color Display, Apple CarPlay, Integrated Center Stack Radio, SiriusXM Satellite Radio, For More Info, Call 800-643-2112, 1-Yr SiriusXM Radio Service	<b>\$995</b>
---	--------------

---

#### TRAIL RAIL MANAGEMENT SYSTEM

-inc: Cargo Compartment Floor Mat	<b>\$195</b>
-----------------------------------	--------------

---

#### QUICK ORDER PACKAGE 28S SPORT S

-inc: Engine: 2.0L I4 DOHC DI Turbo eTorque, Transmission: 8-Speed Automatic (850RE), Front 1-Touch Down Power Windows, Remote Keyless Entry, Speed Sensitive Power Locks, Leather Wrapped Steering Wheel, Power Heated Mirrors, Automatic Headlamps, Sun Visors w/Illuminated Vanity Mirrors, Security Alarm	<b>\$3,200</b>
---	----------------

---

#### Option Packages Total

**\$10,475**



---

Texas Vehicle Exchange

[tveauto.com](http://tveauto.com)

972-242-5350

1724 Luna Road

Carrollton, TX 75006

© 2019 AutoRevo - All rights reserved. - Powered by [AutoRevo](#)