

## 2010 Chevrolet Camaro 2SS

View this car on our website at [fast.autorevo-websites.com/6569268/ebrochure](http://fast.autorevo-websites.com/6569268/ebrochure)

# SELL US YOUR SPECIALTY CAR!

MODERN HOT RODS AND PERFORMANCE CARS

DIESEL TRUCKS

JEEPS & FJ CRUISERS

EXOTICS

**WE PAY MORE! PERIOD!**

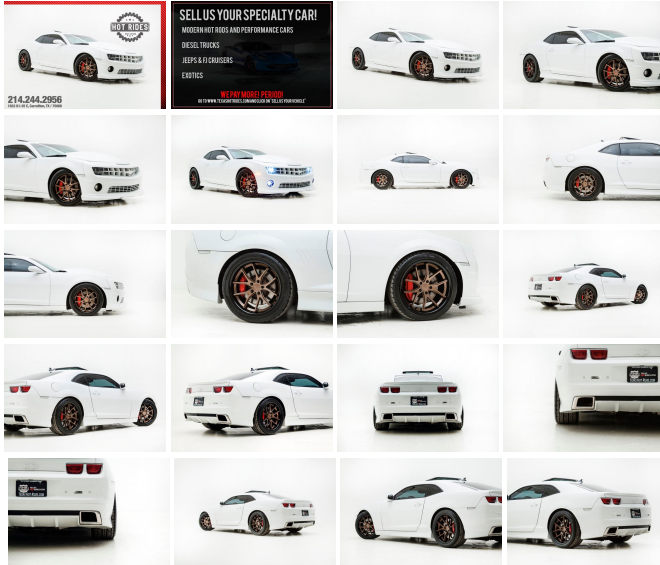
GO TO [WWW.TEXASHOTRIDES.COM](http://WWW.TEXASHOTRIDES.COM) AND CLICK ON "SELL US YOUR VEHICLE"

Our Price **\$23,991**

## Specifications:

<b>Year:</b>	2010
<b>VIN:</b>	2G1FK1EJ6A9156880
<b>Make:</b>	Chevrolet
<b>Stock:</b>	1218162
<b>Model/Trim:</b>	Camaro 2SS
<b>Condition:</b>	Pre-Owned
<b>Body:</b>	Coupe
<b>Exterior:</b>	Summit White
<b>Engine:</b>	ENGINE, 6.2L V8 SFI
<b>Interior:</b>	Black Leather
<b>Transmission:</b>	TRANSMISSION, 6-SPEED AUTOMATIC
<b>Mileage:</b>	73,924
<b>Drivetrain:</b>	Rear Wheel Drive
<b>Economy:</b>	City 16 / Highway 25

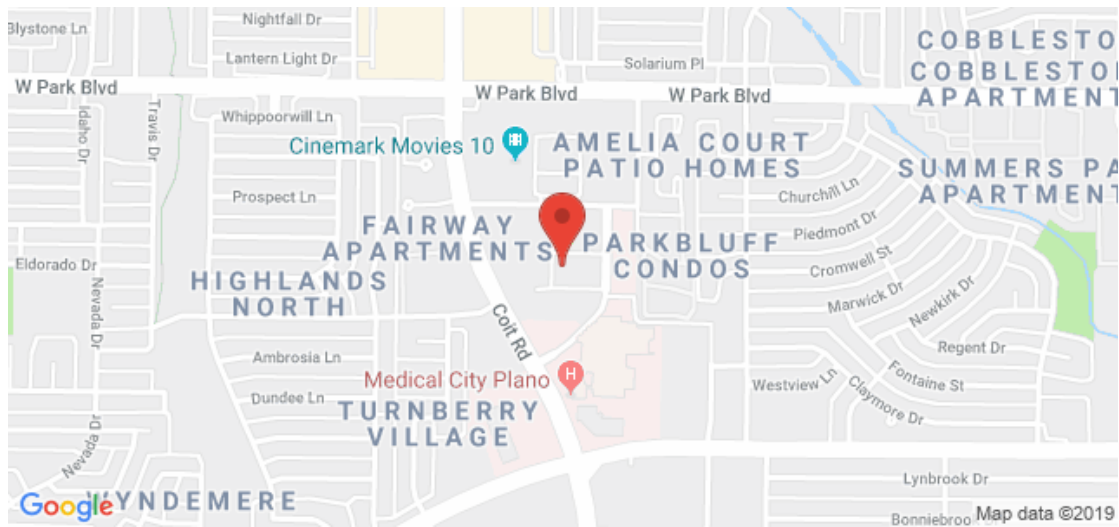
2010 CHEVROLET CAMARO SS IN SUMMIT WHITE! One of the most prestigious muscle cars ever produced is the Camaro SS. With heritage dating back to the 1960's and an unbreakable reputation the Camaro is truly a one of a kind sports car that is sure to please anyone and is respected in every aspect of the automobile world. Sleek looks and jaw-dropping performance; this Camaro doesn't fall short in any category! From the beautiful paint to the leather interior, everything about this car is as good as it was when it rolled off the assembly line. WE FINANCE! BEAUTIFUL GLOSSY WHITE EXTERIOR LUXURIOUS ORANGE & BLACK LEATHER INTERIOR POWERFUL 6.2L SUPERCHARGED V8 ENGINE SMOOTH AUTOMATIC TRANSMISSION CLEAN CARFAX 2SS PACKAGE RS PACKAGE POWER SUNROOF PREMIUM LEATHER INTERIOR PACKAGE FACTORY GROUND EFFECTS PACKAGE (COLOR MATCHED GREAT FINANCING OPTIONS AVAILABLE! \*\*Modifications include\*\* LSA SUPERCHARGER SYSTEM LSA INTERCOOLER ADM PERFORMANCE FRONT MOUNT HEAT EXCHANGER ADM 2.5" SUPERCHARGER PULLEY INNOVATORS WEST BILLET OVERDRIVE HARMONIC BALANCER TEXAS SPEED & PERFORMANCE CUSTOM GRIND CAM PACKAGE TEXAS SPEED & PERFORMANCE STAINLESS LONGTUBE HEADERS TEXAS SPEED & PERFORMANCE OFF-ROAD MID PIPE UPGRADED CATBACK EXHAUST SYSTEM SPEED RX OIL CATCH CAN BILLET OIL DIPSTICK EIBACH LOWERING SPRINGS 20" FERRADA FORGED WHEELS (DARK BRONZE FACE, GLOSS BLACK LIP) GLOSS BLACK GORILLA LUG NUTS NEW NITTO NT555 G2 TIRES GLOSS RED PAINTED CALIPERS COLOR MATCHED FRONT GRILLES OHIO SPEED COWL INDUCTION SPEED LED LOWER FOG/RUNNING LIGHTS ORACLE LED SIDEMARKER LIGHTS INCLUDED CAR COVER Contact our sales team at: 214-244-2956 As always, we welcome third party inspections! We offer finance options, We take trade-ins, free airport pick up, world-wide shipping, extended warranties, installation of additional desired items, and MUCH MORE! We are a full service dealership.



2010 Chevrolet Camaro 2SS

AUTOREVO - Demo - 1.888.311.REVO - View this car on our website at [fast.autorevo-websites.com/6569268/ebrochure](http://fast.autorevo-websites.com/6569268/ebrochure)

## Our Location :



2010 Chevrolet Camaro 2SS

AUTOREVO - Demo - 1.888.311.REVO - View this car on our website at [fast.autorevo-websites.com/6569268/ebrochure](http://fast.autorevo-websites.com/6569268/ebrochure)

## Installed Options

### Interior

- Seat adjuster, driver, 6-way power (fore/aft, up/down, tilt) with power recliner
- Seat adjuster, front passenger 2-way manual (fore/aft) with power recliner
- Seat trim, leather-appointed front seats- Steering column, manual rake and telescopic
- Instrumentation, analog with Driver Information Center display and SS detail, includes speedometer, tachometer, fuel gauge and engine temperature gauge
- Gauges, auxiliary, multi-function includes 4 gauges: oil pressure, battery voltage, oil temperature and transmission fluid temperature, mounted on center console forward of shifter
- Windows, power with driver and passenger Express-Down/Up
- Cruise control, electronic with set and resume speed, steering wheel mounted
- Universal Home Remote includes garage door opener, 3-channel programmable
- Trunk release, remote, located on driver-side- Theft-deterrent system, PASS-Key III
- Air conditioning, single-zone manual- Air filtration system with pollen filter
- Defogger, rear-window, electric- Lighting, front reading lamps
- Seats, heated driver and front passenger - Console, floor, with armrest
- Sill plate, Chevrolet- Floor mats, carpeted front- Dead pedal, driver
- Steering wheel, 3-spoke leather-wrapped- Compass, located in Driver Information Center
- Door locks, power programmable with lockout protection- Remote Keyless Entry
- Glovebox, lockable
- Power outlets, 2 auxiliary 1 located in center console storage area and 1 located at front of center console
- Cup holders, 2 front- Map pockets, front doors- Mirror, inside rearview autodimming
- Visors, driver and front passenger vanity mirrors, covered
- Lighting, interior dome with illuminated entry and theater dimming
- Coat hooks, driver- and passenger-side rear- Shift knob, leather-wrapped
- Cargo convenience net

### Exterior

- Door handles, body-color- Wipers, front intermittent

- Mirrors, outside heated power-adjustable and driver-side auto-dimming, body-color
- Fog lamps (When (WRS) RS Package is ordered, fog lamps act as Daytime Running Lamps.)
- Headlamps, halogen composite with automatic exterior lamp control
- Hood blanket with debossed Chevrolet bowtie- Moldings, body-color lower rocker
- Spoiler, rear
- Fascias, front and rear body-color, SS-specific with unique front grille and rear diffuser, lower extension, front air scoop and brake cooling slots
- Molding, Black roof ditch- Tire sealant and inflator kit in place of spare tire
- Spare tire and wheel, not desired tire sealant and inflator kit in place of spare tire
- Tires, P245/45R20 front and P275/40R20 rear, blackwall, summer
- Wheels, 20" x 8" (50.8 cm x 20.3 cm) front and 20" x 9" (50.8 cm x 22.9 cm) rear flangeless, painted aluminum with sterling silver finish (Midnight Silver finish when (WRS) RS Package is ordered.)

## Safety

- Seat adjuster, driver, 6-way power (fore/aft, up/down, tilt) with power recliner
- Seat adjuster, front passenger 2-way manual (fore/aft) with power recliner
- Seat trim, leather-appointed front seats- Steering column, manual rake and telescopic
- Instrumentation, analog with Driver Information Center display and SS detail, includes speedometer, tachometer, fuel gauge and engine temperature gauge
- Gauges, auxiliary, multi-function includes 4 gauges: oil pressure, battery voltage, oil temperature and transmission fluid temperature, mounted on center console forward of shifter
- Windows, power with driver and passenger Express-Down/Up
- Cruise control, electronic with set and resume speed, steering wheel mounted
- Universal Home Remote includes garage door opener, 3-channel programmable
- Trunk release, remote, located on driver-side- Theft-deterrent system, PASS-Key III
- Air conditioning, single-zone manual- Air filtration system with pollen filter
- Defogger, rear-window, electric- Lighting, front reading lamps
- Seats, heated driver and front passenger - Console, floor, with armrest
- Sill plate, Chevrolet- Floor mats, carpeted front- Dead pedal, driver
- Steering wheel, 3-spoke leather-wrapped- Compass, located in Driver Information Center
- Door locks, power programmable with lockout protection- Remote Keyless Entry
- Glovebox, lockable
- Power outlets, 2 auxiliary 1 located in center console storage area and 1 located at front of center console
- Cup holders, 2 front- Map pockets, front doors- Mirror, inside rearview autodimming
- Visors, driver and front passenger vanity mirrors, covered
- Lighting, interior dome with illuminated entry and theater dimming
- Coat hooks, driver- and passenger-side rear- Shift knob, leather-wrapped
- Cargo convenience net

## Mechanical

- Exhaust, dual-outlet stainless-steel with polished tips
- Brakes, 4-wheel antilock, 4-wheel disc (Brembo performance 4 piston front and 4 piston rear brakes.)
- Steering, power, variable ratio- Suspension, Performance
- Battery, maintenance-free with rundown protection and retained accessory power
- Alternator, 150 amps- Rear wheel drive- Differential, limited slip- Axle, 3.45 ratio
- Transmission, 6-speed manual
- Engine, 6.2L V8 SFI (426 hp [317.6 kW] @ 5900 rpm, 420 lb-ft of torque [567.0 N-m] @ 4600 rpm) (Requires (MN6) 6-speed manual transmission.)

## Option Packages

### Factory Installed Packages

ENGINE, 6.2L V8 SFI  
with Active Fuel Management  
(400 hp [298.3 kW] @ 5900 rpm, 410 lb-ft of torque [553.5 N-m] @ 4300 rpm)

TRANSMISSION, 6-SPEED AUTOMATIC  
includes TAPshift manual shift controls on steering wheel \$1,185

Option Packages Total  
\$1,185



---

AUTOREVO - Demo

[fast.autorevo-websites.com](http://fast.autorevo-websites.com)

1.888.311.REVO

3820 American Drive

Plano, TX 75075

© 2019 AutoRevo - All rights reserved. - Powered by [AutoRevo](#)