

2018 GMC Sierra 2500HD Denali

View this car on our website at bleskinmotors.com/6569034/ebrochure

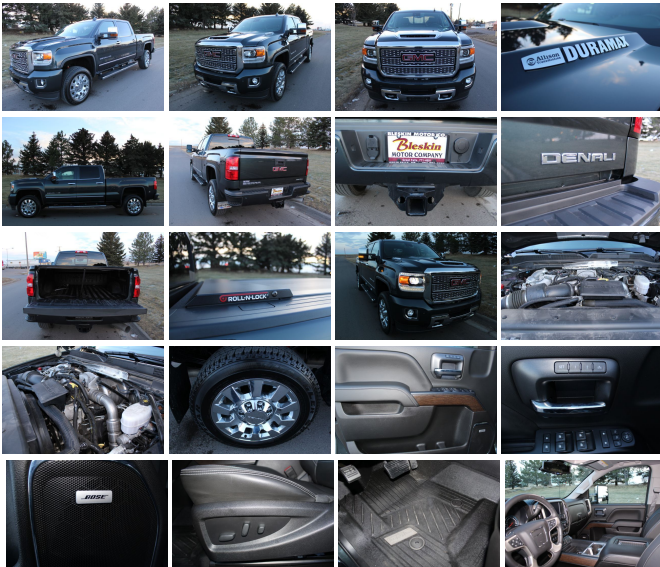


Our Price **\$62,995**

Specifications:

Year:	2018
VIN:	1GT12UEY6JF150925
Make:	GMC
Stock:	19008CS
Model/Trim:	Sierra 2500HD Denali
Condition:	Pre-Owned
Body:	Pickup Truck
Exterior:	Slate Gray
Engine:	ENGINE, DURAMAX 6.6L TURBO-DIESEL V8, B20-DIESEL COMPATIBLE
Interior:	Black Leather
Mileage:	28,286
Drivetrain:	4 Wheel Drive

Owners Manuals, Power Steering, AM/FM/CD/SAT/MEDIA-Bose



2018 GMC Sierra 2500HD Denali

Bleskin Motor Company - 406-771-4691 - View this car on our website at bleskinmotors.com/6569034/ebrochure

Our Location :



2018 GMC Sierra 2500HD Denali

Bleskin Motor Company - 406-771-4691 - View this car on our website at bleskinmotors.com/6569034/ebrochure

Installed Options

Interior

- Seats, front full-feature leather-appointed bucket with (KA1) heated seat cushions and seat backs. Includes 12-way power driver and front passenger seat adjusters, including 4-way power lumbar control, 2-position driver memory, adjustable head restraints, (D07) floor console and storage pockets and (K4C) wireless charging (Included with (PDR) 2500HD SLT Gas Premium Plus Package.)
- Seat trim, Perforated leather-appointed
- Seating, heated and ventilated perforated leather-appointed front bucket
- Safety Alert Seat
- Seat, rear 60/40 folding bench (folds up), 3-passenger (includes child seat top tether anchor)
- Steering column, manual Tilt-Wheel and telescoping
- Steering wheel, heated, leather wrapped with audio and cruise controls
- Steering wheel audio controls
- Console, floor mounted with cup holders, cell phone storage, power cord management, hanging file holder capability and (K4C) wireless charging
- Floor covering, color-keyed carpeting
- Floor mats, color-keyed carpeted first and second row
- Instrumentation, 6-gauge cluster featuring speedometer, fuel level, engine temperature, tachometer, voltage and oil pressure
- Display, customizable driver display, 8" multi-color configurable
- Windows, power with driver express up and down and express down on all other windows
- Window, power, rear sliding with rear defogger (Not included when (VYU) Snow Plow Prep Package is ordered.)
- Door locks, power- Cruise control, steering wheel-mounted
- Theft-deterrent system, unauthorized entry- Pedals, power-adjustable
- Remote vehicle starter system- Remote Keyless Entry
- Universal Home Remote (Not included when (VYU) Snow Plow Prep Package is ordered.)
- Air conditioning, dual-zone automatic climate control- Defogger, rear-window electric
- Power outlet, 110-volt AC- Mirror, inside rearview auto-dimming
- Visors, driver and front passenger illuminated vanity mirrors

- Assist handle, front passenger and driver on A-pillars

Exterior

- Wheels, 20" (50.8 cm) chromed cast aluminum
- Tires, LT265/60R20E all-terrain, blackwall
- Tire carrier lock keyed cylinder lock that utilizes same key as ignition and door
- Wheelhouse liners, rear- Bumper, front, body-color- CornerStep, rear bumper
- Bumper, rear body-color with bumper CornerSteps
- LPO, Assist steps, chromed tubular, 6" rectangular (dealer installed) (May be substituted with (VXJ) assist steps, LPO. (VXH) is deleted when (VXJ) assist steps, LPO is specified.)
- Moldings, bodyside, chrome
- Headlamps, high intensity discharge (HID) projector-beam with GMC signature LED lighting
- Lamps, cargo area, cab mounted with switch on center switch bank
- LED Lighting, cargo box with switch on center switch bank - Fog lamps, front, halogen
- Mirrors, outside chrome cap, heated power-adjustable, power-folding and driver-side auto-dimming with integrated turn signal indicators and puddle lamps (includes driver's side spotter mirror)
- Mirror caps, chrome- Glass, deep-tinted- Door handles, chrome
- Capless Fuel Fill (Requires gas engine and (E63) pickup box.)
- Tailgate and bed rail protection caps, top - Remote Locking Tailgate
- Tailgate, EZ-Lift and Lower
- Bed Liner, Spray-on Pickup box bed liner consisting of high pressure, chemically bonded, sprayed-on polyurea & polyurethane liner formulation. Liner is permanently bonded to the truck bed providing a water tight seal. Includes embossed Denali logo on front bed wall. The textured, non-skid surface is black in color and robotically applied. Spray-on liner covers entire bed interior surface below side rails, including tailgate, front box top rail, gauge hole plugs and lower tie down loops. (Not available with (VZX) bed liner, LPO.)

Safety

- Seats, front full-feature leather-appointed bucket with (KA1) heated seat cushions and seat backs. Includes 12-way power driver and front passenger seat adjusters, including 4-way power lumbar control, 2-position driver memory, adjustable head restraints, (D07) floor console and storage pockets and (K4C) wireless charging (Included with (PDR) 2500HD SLT Gas Premium Plus Package.)
- Seat trim, Perforated leather-appointed
- Seating, heated and ventilated perforated leather-appointed front bucket
- Safety Alert Seat
- Seat, rear 60/40 folding bench (folds up), 3-passenger (includes child seat top tether anchor)
- Steering column, manual Tilt-Wheel and telescoping
- Steering wheel, heated, leather wrapped with audio and cruise controls
- Steering wheel audio controls
- Console, floor mounted with cup holders, cell phone storage, power cord management, hanging file holder capability and (K4C) wireless charging
- Floor covering, color-keyed carpeting
- Floor mats, color-keyed carpeted first and second row
- Instrumentation, 6-gauge cluster featuring speedometer, fuel level, engine temperature, tachometer, voltage and oil pressure
- Display, customizable driver display, 8" multi-color configurable
- Windows, power with driver express up and down and express down on all other windows
- Window, power, rear sliding with rear defogger (Not included when (VYU) Snow Plow Prep Package is ordered.)
- Door locks, power- Cruise control, steering wheel-mounted
- Theft-deterrent system, unauthorized entry- Pedals, power-adjustable
- Remote vehicle starter system- Remote Keyless Entry
- Universal Home Remote (Not included when (VYU) Snow Plow Prep Package is ordered.)
- Air conditioning, dual-zone automatic climate control- Defogger, rear-window electric
- Power outlet, 110-volt AC- Mirror, inside rearview auto-dimming
- Visors, driver and front passenger illuminated vanity mirrors
- Assist handle, front passenger and driver on A-pillars

Mechanical

- Engine, Vortec 6.0L Variable Valve Timing V8 SFI, E85-compatible, FlexFuel capable of running on unleaded or up to 85% ethanol (360 hp [268.4 kW] @ 5400 rpm, 380 lb-ft of torque [515.0 N-m] @ 4200 rpm)
- Transmission, 6-speed automatic, heavy-duty, electronically controlled with overdrive and tow/haul mode. Includes Cruise Grade Braking and Powertrain Grade Braking (Requires (L96) Vortec 6.0L V8 SFI engine or (LC8) 6.0L V8 SFI Gaseous CNG/LPG capable engine.)
- Rear axle, 4.10 ratio (Requires (L96) Vortec 6.0L V8 SFI engine.)
- Suspension Package, Standard includes 51mm twin tube shock absorbers and 33mm front stabilizer bar
- Pickup box- GVWR, 9500 lbs. (4309 kg) (Requires (L96) Vortec 6.0L V8 SFI engine.)
- Air cleaner, high-capacity
- Transfer case, electronic shift with rotary dial controls (Requires 4WD models.)

- Differential, heavy-duty locking rear- Four wheel drive- Cooling, external engine oil cooler
- Cooling, auxiliary external transmission oil cooler
- Battery, heavy-duty 720 cold-cranking amps/80 Amp-hr, maintenance-free with rundown protection and retained accessory power
- Alternator, 150 amps
- Trailering equipment Trailering hitch platform 2.5" with a 2.0" insert for HD, 7-wire harness with independent fused trailering circuits mated to a 7-way sealed connector to hook up parking lamps, backup lamps, right and left turn signals, an electric brake lead, battery and a ground, The trailer connector also includes the 4-way for use on trailers without brakes - park, brake/turn lamps
- Trailer brake controller, integrated- Frame, fully-boxed, hydroformed front section
- Recovery hooks, front, frame-mounted, black
- Underbody Shield, frame-mounted shields includes front underbody shield starting behind front bumper and running to first cross-member, protecting front underbody, oil pan, differential case and transfer case
- Cargo tie downs (4), movable upper
- Steering, Recirculating Ball with smart flow power steering system
- Steering, Digital Steering Assist
- Brakes, 4-wheel antilock, 4-wheel disc with DuraLife brake rotors
- Exhaust, aluminized stainless-steel muffler and tailpipe

Option Packages

Factory Installed Packages

-
 ENGINE, DURAMAX 6.6L TURBO-
 DIESEL V8, B20-DIESEL COMPATIBLE
 (445 hp [332 kW] @ 2800 rpm,
 910 lb-ft of torque [1220 Nm]
 @ 1600 rpm)

Bleskin Motor Company

bleskinmotors.com

406-771-4691

4901 10th Avenue South

Great Falls, Montana 59405

© 2019 AutoRevo - All rights reserved. - Powered by AutoRevo