

2010 Jeep Wrangler Unlimited Rubicon

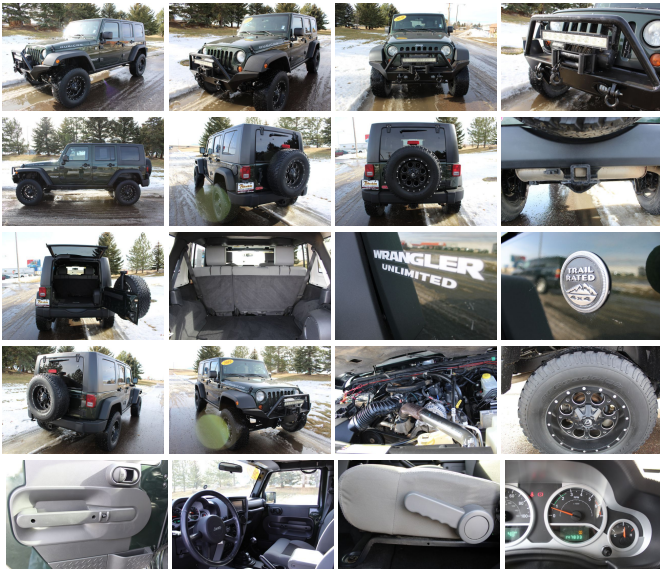
View this car on our website at bleskinmotors.com/6568126/ebrochure



Our Price **\$21,995**

Specifications:

Year:	2010
VIN:	1J4BA6H13AL193292
Make:	Jeep
Stock:	18412
Model/Trim:	Wrangler Unlimited Rubicon
Condition:	Pre-Owned
Body:	SUV
Exterior:	Natural Green Pearl
Engine:	3.8L OHV 12-VALVE SMPI V6 ENGINE
Interior:	Dark Slate Gray/Medium Slate Gray Cloth Interior
Mileage:	147,809
Drivetrain:	4 Wheel Drive
Economy:	City 15 / Highway 19
	Power Steering,



2010 Jeep Wrangler Unlimited Rubicon

Bleskin Motor Company - 406-771-4691 - View this car on our website at bleskinmotors.com/6568126/ebrochure

Our Location :



2010 Jeep Wrangler Unlimited Rubicon
Bleskin Motor Company - 406-771-4691 - View this car on our website at bleskinmotors.com/6568126/ebrochure

Installed Options

Interior

- Cloth seat trim- Low back bucket seats- Reclining front seats- Driver height adjustment
- 60/40 folding rear seat- Rear seat outboard head restraints- Full length floor console
- Front seat area carpet- Rear/cargo area carpet- Front & rear floor mats
- Tilt steering column- Leather-wrapped steering wheel
- Premium instrumentation w/tachometer- Outside temp & compass gauge- Pwr door locks
- Pwr windows w/driver & front-passenger one-touch down- Remote keyless entry
- Speed control- Sentry Key theft deterrent system- Security alarm- Air conditioning
- Aux 12V pwr outlet- Sport bar w/full padding- Sliding sunvisors w/mirrors
- Rear passenger assist handle kit- Front seatback map pockets
- Front dome light w/on/off switch- Rear dome light w/on/off switch
- Cargo compartment covered storage- Cargo tie down loops

Exterior

- 17" x 7.5" satin carbon painted aluminum wheels - LT255/75R17 off-road BSW tires
- Full size spare tire- Matching spare wheel- Outside tire carrier- Easy folding soft top
- Sunrider soft top feature- Black front bumper- Accent color fender flares
- Body color grille- Halogen headlamps- Fog lamps- Tinted windshield glass
- Deep-tint sunscreen windows- Swing-away mirrors
- Variable intermittent windshield wipers- Hood insulation

Safety

- Cloth seat trim- Low back bucket seats- Reclining front seats- Driver height adjustment
- 60/40 folding rear seat- Rear seat outboard head restraints- Full length floor console
- Front seat area carpet- Rear/cargo area carpet- Front & rear floor mats
- Tilt steering column- Leather-wrapped steering wheel
- Premium instrumentation w/tachometer- Outside temp & compass gauge- Pwr door locks
- Pwr windows w/driver & front-passenger one-touch down- Remote keyless entry
- Speed control- Sentry Key theft deterrent system- Security alarm- Air conditioning
- Aux 12V pwr outlet- Sport bar w/full padding- Sliding sunvisors w/mirrors
- Rear passenger assist handle kit- Front seatback map pockets
- Front dome light w/on/off switch- Rear dome light w/on/off switch
- Cargo compartment covered storage- Cargo tie down loops

Mechanical

- 3.8L OHV 12-valve SMPI V6 engine- 6-speed manual transmission- 4.10 axle ratio
- Tru-Lok front & rear axles- Hill start assist- Next generation Dana 44 HD front axle
- Next generation Dana 44 HD rear axle- 4:1 Rock-Trac HD part-time 4WD system
- 600-CCA maintenance free battery- 140-amp alternator- (2) front/(1) rear tow hooks
- Rock rails- Fuel tank skid plate- Transfer case skid plate- Performance suspension
- Rear stabilizer bar- Electronic front sway bar disconnect- Pwr steering
- 4-wheel disc brakes- Hydraulic assist brake boost

Option Packages

Factory Installed Packages

-
3.8L OHV 12-VALVE SMPI V6 ENGINE

Bleskin Motor Company

bleskinmotors.com

406-771-4691

4901 10th Avenue South

Great Falls, Montana 59405

© 2019 AutoRevo - All rights reserved. - Powered by [AutoRevo](#)