

# 2013 Land Rover Range Rover Sport HSE

View this car on our website at [texasautovalue.com/6567540/ebrochure](http://texasautovalue.com/6567540/ebrochure)



Our Price **\$28,891**

## Specifications:

**Year:** 2013  
**VIN:** SALS2D4XDA777824  
**Make:** Land Rover  
**Stock:** 777824  
**Model/Trim:** Range Rover Sport HSE  
**Condition:** Pre-Owned  
**Body:** SUV  
**Exterior:** Fuji White  
**Engine:** 5.0L V8 engine  
**Interior:** Almond  
**Mileage:** 73,836  
**Drivetrain:** 4 Wheel Drive  
**Economy:** City 13 / Highway 18

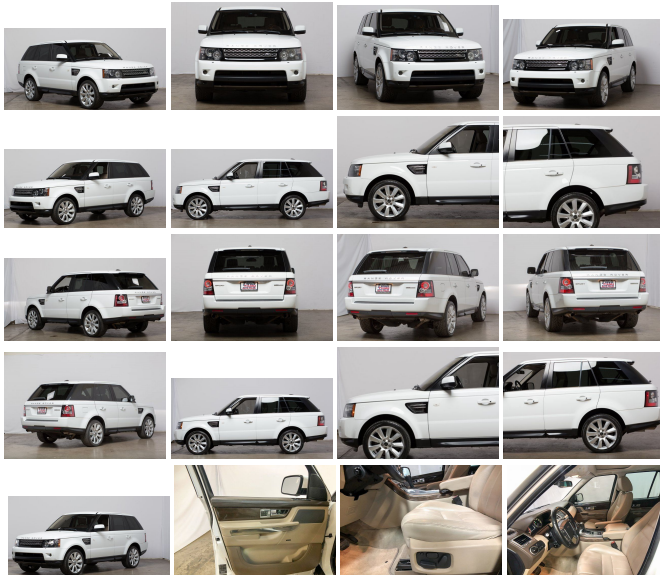
## 2013 Land Rover Range Rover Sport HSE

Texas Auto Value - \$24,490.00  
469-547-1642

VIN: SALS2D4XDA777824  
Year: 2013  
Make: Land Rover  
Model: Range Rover Sport  
Trim: HSE  
Stock #: 777824  
Condition: Pre-Owned  
Mileage: 73836  
MPG: 18 Hwy / 13 City  
Exterior Color: White  
Interior: Other  
Body: SUV  
Transmission: Automatic  
Engine: 5.0L V8 engine

Texas Auto Value - [texasautovalue.com](http://texasautovalue.com)

- CarFax One-Owner!
- Qualifies for CarFax Buyback Guarantee
- CarFax reports No Accidents!
- CarFax reports No Damage!



Description (for 2013 Land Rover\_ Range Rover Sport\_) 2013 Land Rover Range Rover Sport HSE WhiteClimate Comfort Package, Contrast Stitching, Cooler Box, Electrically Adjustable Driver Side Seat Bolsters, Extended Leather Package, Heated Front & 2nd Row Seats, Heated Front Windshield, Heated Steering Wheel, Heated Windshield Washer Jets, Luxury Package, Navigation System.Good/ Bad/ No Credit Auto Financing!!!As low as 5% Down Payment! Visit us our website and fill out quick and simple finance application to get started!Texas Auto Value is bring Value back to North TX.A clear and simple car buying experience, No Haggle Pricing.

---

#### Included Features (for 2013 Land Rover\_ Range Rover Sport\_) MECHANICAL

- 2-speed electronic transfer gearbox -inc: infinitely variable locking center differential
- 5.0L V8 engine
- 6-speed automatic transmission w/Commandshift
- Double-wishbone rear suspension -inc: gas filled shock absorbers
- Dual exhaust
- Electronic air suspension system -inc: automatic load-leveling w/access/standard/off-road/extended height modes, terrain-sensing software, cross-link valves for improved off-road performance, long-travel air springs
- Electronic parking brake
- Integrated body/chassis
- MacPherson strut front suspension -inc: double-pivot lower arms, gas filled shock absorbers
- Permanent 4-wheel drive
- Push button start
- Pwr ventilated front & rear disc brakes
- Speed sensitive pwr rack & pinion steering
- Terrain Response system -inc: general mode, grass/gravel/snow mode, mud/ruts mode, sand mode, rock crawl mode

#### SAFETY

- 4-channel 4-wheel all-terrain anti-lock brakes (ABS)
- 6-airbag supplemental restraint system -inc: driver & front passenger front airbags w/passenger sensor, driver & front passenger-side airbags, side-curtain airbags for rear outboard passengers
- Active roll mitigation (ARM)
- Child locks for rear doors/windows
- Collision-activated inertia switch -inc: collision will trigger doors to unlock, fuel pump to turn off, hazard lights to turn on
- Cornering brake control (CBC)
- Electronic brakeforce distribution (EBD)
- Emergency brake assist (EBA)
- Front crumple zones
- Front seatbelt pretensioners
- Front/rear park distance control
- Front/rear three-point seatbelts & head restraints
- Height adjustable front seatbelt anchors
- Hill descent control (HDC)
- LATCH (Lower Anchor & Tether for Children) system for child seat attachment
- Roll stability control
- Tire pressure monitoring system

#### INTERIOR

- Auto-dimming rearview mirror
- Carpet floor mats
- Center console cooler box
- Cruise control w/steering wheel mounted controls
- Door inserts w/contrast stitching
- Dual-zone automatic climate control w/recirculation

- Electronic rear window detroster
- Front door map pockets
- Front seatback storage pockets
- Front/rear cupholders
- HomeLink system for garage doors & security gates
- Illuminated vanity mirrors
- LCD instrument panel -inc: tachometer, fuel filler door indicator, comprehensive message center w/trip computer, analog clock
- Leather-wrapped gear selector
- Outside temp display
- Premium navigation system -inc: HDD, touch screen, voice activation
- Pwr windows w/one-touch open/close
- Retained accessory pwr -inc: time out for windows & sunroof
- Retractable/removable cargo area cover -inc: cargo net hooks
- Say What You See intuitive voice control

#### ENTERTAINMENT

- Bluetooth telephone connectivity
- Dual glass-mounted antenna system

#### EXTERIOR

- Body color rear spoiler
- Door sill tread strips
- Front/rear fog lamps
- Heated windscreen w/heated washer jets
- Intermittent rear window wiper
- LED tail lamps
- LED turn signals
- P275/40R20 all season tires
- Privacy glass
- Puddle/footwell lamps
- Pwr open/close tailgate w/selectable opening height
- Pwr tilt/sliding sunroof
- Rain-sensing front windshield wipers
- Rear body color applique
- Rear bumper tread strip
- Rear lamps w/clear lenses
- Reduced section spare tire
- Side repeater lamps w/clear lenses
- Xenon automatic headlamps w/pwr washers

#### PACKAGE

- Extended leather pkg -inc: premium leather wrapped instrument upper dash board, premium leather wrapped door tops, premium leather wrapped door armrests

---

Land Rover\_ Range Rover Sport\_

---

2013 Land Rover Range Rover Sport HSE\* Land Rover\* Range Rover Sport\* HSE\* 5.0L V8 engine\* 73836 \* Automatic \* Land Rover Range Rover Sport\* 2013 \* Other \* White \* SUV\* Range Rover Sport HSE\* 2013 Land Rover \* Gasoline \* \$24,490 \* Addison\* Addison, TX\* 2013 Land Rover Range Rover Sport

## Vehicle History Report : as Of 02/20/2019

 Snapshot

2013 LAND ROVER RANGE ROVER SPORT LUX

	No accidents reported to CARFAX
	No damage reported to CARFAX
	CARFAX 1-Owner vehicle
	Personal lease vehicle
	Last owned in Texas
	51,409 Last reported odometer reading



**FREE CARFAX Report**

See the full CARFAX Report for additional information

\*carfax Snapshot is a reflection of available information on the date the report was pulled. carfax is constantly being updated with new information and is subject to change at any time.

## Our Location :



2013 Land Rover Range Rover Sport HSE

Texas Auto Value - 2142818641 - View this car on our website at [texasautovalue.com/6567540/ebrochure](http://texasautovalue.com/6567540/ebrochure)

## Installed Options

### Interior

- American straight grain walnut wood trim- Leather seat trim w/contrast stitching
- 8-way pwr front heated bucket seats -inc: folding armrests, adjustable head restraints, driver lumbar support, pwr driver seat side bolsters
- 65/35 split folding heated rear seat w/adjustable head restraints
- Center console cooler box- Ebony center stack/console trim- Carpet floor mats
- Leather-wrapped gear selector
- LCD instrument panel -inc: tachometer, fuel filler door indicator, comprehensive message center w/trip computer, analog clock
- Outside temp display- Pwr windows w/one-touch open/close
- Retained accessory pwr -inc: time out for windows & sunroof
- Speed sensitive pwr locks w/passive entry
- Memory pack w/(3) settings -inc: driver seat, electric steering column, exterior mirrors
- Cruise control w/steering wheel mounted controls
- Say What You See intuitive voice control
- Perimetric anti-theft alarm system w/keyless entry
- HomeLink system for garage doors & security gates
- Premium navigation system -inc: HDD, touch screen, voice activation
- Dual-zone automatic climate control w/recirculation- Electronic rear window defroster
- Door inserts w/contrast stitching
- Noble finish trim accents -inc: speaker bezel, vent bezels, gear knob, glove box release, interior door pulls
- Auto-dimming rearview mirror- Illuminated vanity mirrors- Front/rear cupholders
- Front door map pockets- Front seatback storage pockets
- Retractable/removable cargo area cover -inc: cargo net hooks

### Exterior

- 20" 9-spoke sparkle finish alloy wheels (style 9) - P275/40R20 all season tires
- Reduced section spare tire- Pwr tilt/sliding sunroof- Body color rear spoiler

- Door sill tread strips- Rear bumper tread strip
- Xenon automatic headlamps w/pwr washers- Front/rear fog lamps- LED turn signals
- Side repeater lamps w/clear lenses- Puddle/footwell lamps- LED tail lamps
- Rear lamps w/clear lenses- Privacy glass- Heated windshield w/heated washer jets
- Pwr folding heated pwr mirrors w/memory- Rain-sensing front windshield wipers
- Intermittent rear window wiper- Rear body color applique
- Pwr open/close tailgate w/selectable opening height
- Leather-wrapped pwr tilt/telescopic heated steering wheel w/audio controls

## Safety

- American straight grain walnut wood trim- Leather seat trim w/contrast stitching
- 8-way pwr front heated bucket seats -inc: folding armrests, adjustable head restraints, driver lumbar support, pwr driver seat side bolsters
- 65/35 split folding heated rear seat w/adjustable head restraints
- Center console cooler box- Ebony center stack/console trim- Carpet floor mats
- Leather-wrapped gear selector
- LCD instrument panel -inc: tachometer, fuel filler door indicator, comprehensive message center w/trip computer, analog clock
- Outside temp display- Pwr windows w/one-touch open/close
- Retained accessory pwr -inc: time out for windows & sunroof
- Speed sensitive pwr locks w/passive entry
- Memory pack w/(3) settings -inc: driver seat, electric steering column, exterior mirrors
- Cruise control w/steering wheel mounted controls
- Say What You See intuitive voice control
- Perimetric anti-theft alarm system w/keyless entry
- HomeLink system for garage doors & security gates
- Premium navigation system -inc: HDD, touch screen, voice activation
- Dual-zone automatic climate control w/recirculation- Electronic rear window defroster
- Door inserts w/contrast stitching
- Noble finish trim accents -inc: speaker bezel, vent bezels, gear knob, glove box release, interior door pulls
- Auto-dimming rearview mirror- Illuminated vanity mirrors- Front/rear cupholders
- Front door map pockets- Front seatback storage pockets
- Retractable/removable cargo area cover -inc: cargo net hooks

## Mechanical

- 5.0L V8 engine- Push button start- 6-speed automatic transmission w/Commandshift
- 2-speed electronic transfer gearbox -inc: infinitely variable locking center differential
- Permanent 4-wheel drive- Integrated body/chassis
- Electronic air suspension system -inc: automatic load-leveling w/access/standard/off-road/extended height modes, terrain-sensing software, cross-link valves for improved off-road performance, long-travel air springs
- MacPherson strut front suspension -inc: double-pivot lower arms, gas filled shock absorbers
- Double-wishbone rear suspension -inc: gas filled shock absorbers
- Terrain Response system -inc: general mode, grass/gravel/snow mode, mud/ruts mode, sand mode, rock crawl mode
- Speed sensitive pwr rack & pinion steering - Pwr ventilated front & rear disc brakes
- Electronic parking brake- Dual exhaust



[texasautovalue.com](http://texasautovalue.com)

2142818641

4112 Billy Mitchell Dr.

Addison, TX 75001

© 2019 AutoRevo - All rights reserved. - Powered by AutoRevo