

2019 Ford F-150 Platinum

View this car on our website at askjorgelopez.com/6566693/ebrochure

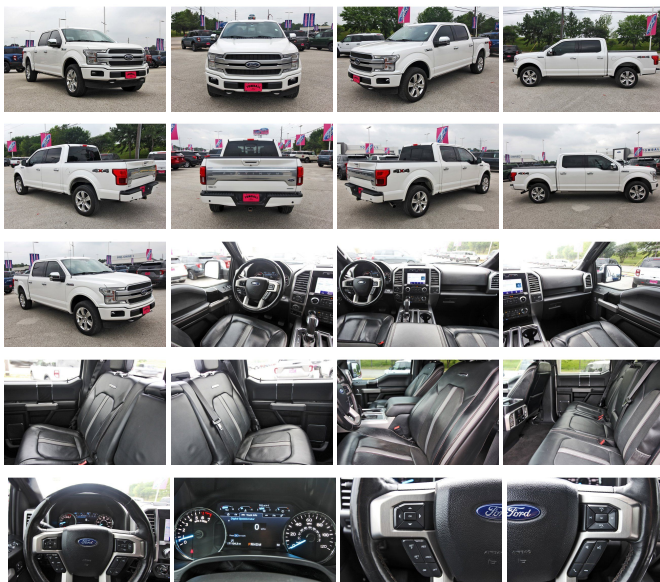


Our Price **\$57,051**

Specifications:

Year:	2019
VIN:	1FTEW1E47KFA79480
Make:	Ford
Stock:	KFA79480
Model/Trim:	F-150 Platinum
Condition:	Pre-Owned
Body:	Pickup Truck
Exterior:	WHITE PLATINUM TC
Engine:	ENGINE: 3.5L V6 ECOBOOST
Interior:	Black Leather
Mileage:	71,116
Drivetrain:	4 Wheel Drive
Economy:	City 16 / Highway 22

Come see this 2019 Ford F-150 . Its Automatic transmission and Regular Unleaded 3.5 L EcoBoost engine will keep you going. This Ford F-150 has the following options: ENGINE: 3.5L V6 ECOBOOST - inc: auto start-stop technology, GVWR: 7,000 lbs Payload Package, 3.31 Axle Ratio, Transmission w/SelectShift Sequential Shift Control, Towing Equipment -inc: Trailer Sway Control, Tire Specific Low Tire Pressure Warning, Tailgate Rear Cargo Access, Steel Spare Wheel, Solid Axle Rear Suspension w/Leaf Springs, Side Impact Beams, Securilock Anti-Theft Ignition (pats) Immobilizer, and Safety Canopy System Curtain 1st And 2nd Row Airbags. See it for yourself at Tomball Ford, 22702 Tomball Parkway, Tomball, TX 77375.



2019 Ford F-150 Platinum

Ask Jorge Lopez - 281-205-0352 - View this car on our website at askjorgelopez.com/6566693/ebrochure

Vehicle History Report : as Of 05/06/2024

CARFAX

Snapshot

2019 FORD F-150 PLATINUM



No accidents or damage reported to CARFAX



23 Service history records



CARFAX 1-Owner vehicle



Personal lease vehicle



Last owned in Texas



71,134 Last reported odometer reading



FREE CARFAX Report

See the full CARFAX Report for additional information

*carfax Snapshot is a reflection of available information on the date the report was pulled. carfax is constantly being updated with new information and is subject to change at any time.

Our Location :



2019 Ford F-150 Platinum

Ask Jorge Lopez - 281-205-0352 - View this car on our website at askjorgelopez.com/6566693/ebrochure

Installed Options

Interior

- Gauges -inc: Speedometer, Odometer, Voltmeter, Oil Pressure, Engine Coolant Temp, Tachometer, Inclinometer, Transmission Fluid Temp, Trip Odometer and Trip Computer
- Power Rear Windows
- Remote Keyless Entry w/Integrated Key Transmitter, Illuminated Entry and Panic Button
- Proximity Key For Doors And Push Button Start
- Cruise Control w/Steering Wheel Controls
- Black Unique Multi-Contour Leather Bucket Seats -inc: Active Motion, 4-way adjustable driver/passenger headrests, heated and ventilated 10-way power driver and passenger w/power lumbar, memory driver's seat, flow-through console and floor shifter
- Full Carpet Floor Covering -inc: Carpet Front And Rear Floor Mats
- FOB Controls -inc: Trunk/Hatch/Tailgate and Remote Engine Start
- Door Mirrors, Steering Wheel and Pedals
- SYNC 3 -inc: enhanced voice recognition communications and entertainment system, 8" LCD capacitive touchscreen in center stack w/swipe capability, pinch-to-zoom capability included when equipped w/available voice-activated touchscreen navigation system, AppLink, 911 Assist, Apple CarPlay and Android Auto and 2 smart charging USB ports, Note: SYNC AppLink lets you control some of your favorite compatible mobile apps w/your voice, It is compatible w/select smartphone platforms, Commands may vary by phone and AppLink software

Power 1st Row Windows w/Driver And Passenger 1 Touch Up/Down

Option Packages

Factory Installed Packages

ENGINE: 3.5L V6 ECOBOOST	
-inc: auto start-stop technology	\$600
Option Packages Total	\$600

- Power 1st Row Windows w/Driver And Passenger 1-Touch Up/Down
- Power Door Locks w/Autolock Feature- Trip Computer- Driver Seat- Passenger Seat
- 60-40 Folding Split-Bench Front Facing Heated Fold-Up Cushion Rear Seat
- Power Tilt/Telescoping Steering Column
- FordPass Connect 4G LTE WiFi Mobile Hotspot Internet Access
- Heated Leather/Metal-Look Steering Wheel w/Auto Tilt-Away- Front Cupholder
- Rear Cupholder- Compass- Keypad- Remote Releases -Inc: Keyfob Cargo Access
- Garage Door Transmitter- Voice Activated Dual Zone Front Automatic Air Conditioning
- HVAC -inc: Underseat Ducts and Console Ducts - Glove Box- Full Cloth Headliner
- Leather/Chrome Gear Shift Knob
- Interior Trim -inc: Aluminum Instrument Panel Insert, Cabbage Insulator, Genuine Wood/Metal-Look Door Panel Insert, Leather/Aluminum Console Insert and Chrome Interior Accents
- Day-Night Auto-Dimming Rearview Mirror
- Driver And Passenger Visor Vanity Mirrors w/Driver And Passenger Illumination
- 3 12V DC Power Outlets
- Full Overhead Console w/Storage, 3 12V DC Power Outlets and 2 AC Power Outlets
- Fade-To-Off Interior Lighting- Front And Rear Map Lights- Pickup Cargo Box Lights
- Voice-Activated Touchscreen Navigation -inc: pinch-to-zoom capability, SiriusXM Traffic and Travel Link, Note: SiriusXM Traffic and Travel Link includes a 5-year prepaid subscription, SiriusXM Traffic and Travel Link service is not available in Alaska or Hawaii, SiriusXM audio and data services each require a subscription sold separately, or as a package, by Sirius XM Radio Inc, If you decide to continue service after your trial, the subscription plan you choose will automatically renew thereafter and you will be charged according to your chosen payment method at then-current rates, Fees and taxes apply, To cancel you must call SiriusXM at 1-866-635-2349, See SiriusXM customer agreement for complete terms at www.siriusxm.com, All fees and programming subject to change, Sirius, XM and all related marks and logos are the trademarks of Sirius XM Radio Inc
- Instrument Panel Bin, Dashboard Storage, Driver / Passenger And Rear Door Bins and 2nd Row Underseat Storage
- Delayed Accessory Power- Power Adjustable Pedals- Outside Temp Gauge
- Systems Monitor- Redundant Digital Speedometer- Digital/Analog Display
- 2 Seatback Storage Pockets- Manual Adjustable Rear Head Restraints
- Front Center Armrest and Rear Center Armrest
- Securilock Anti-Theft Ignition (pats) Engine Immobilizer- Perimeter Alarm
- 3 12V DC Power Outlets and 2 AC Power Outlets

Exterior

- Tires: P275/55R20 BSW AT -inc: 275/65R18 OWL all-season/all-terrain spare tire
- Chrome Power Heated Side Mirrors w/Driver Auto Dimming, Power Folding and Turn Signal Indicator
- Tailgate/Rear Door Lock Included w/Power Door Locks
- Fully Automatic Aero-Composite Led Low/High Beam Auto High-Beam Daytime Running Lights Preference Setting Headlamps w/Delay-Off
- Wheels: 20" Polished Aluminum- Regular Box Style- Steel Spare Wheel
- Spare Tire Stored Underbody w/Crankdown- Clearcoat Paint
- Body-Colored Rear Step Bumper
- Body-Colored Front Bumper w/Body-Colored Rub Strip/Fascia Accent and 2 Tow Hooks
- Body-Colored Wheel Well Trim
- Chrome Side Windows Trim and Black Front Windshield Trim - Chrome Door Handles
- Power Rear Window w/Defroster- Deep Tinted Glass
- Rain Detecting Variable Intermittent Wipers w/Heated Wiper Park - Aluminum Panels
- Power Running Boards- Silver Grille- Tailgate Rear Cargo Access
- Cargo Lamp w/High Mount Stop Light- Front Fog Lamps- Perimeter/Approach Lights
- LED Brakelights

Safety

- Gauges -inc: Speedometer, Odometer, Voltmeter, Oil Pressure, Engine Coolant Temp, Tachometer, Inclinator, Transmission Fluid Temp, Trip Odometer and Trip Computer
- Power Rear Windows
- Remote Keyless Entry w/Integrated Key Transmitter, Illuminated Entry and Panic Button
- Proximity Key For Doors And Push Button Start
- Cruise Control w/Steering Wheel Controls
- Black Unique Multi-Contour Leather Bucket Seats -inc: Active Motion, 4-way adjustable driver/passenger headrests, heated and ventilated 10-way power driver and passenger w/power lumbar, memory driver's seat, flow-through console and floor shifter
- Full Carpet Floor Covering -inc: Carpet Front And Rear Floor Mats
- FOB Controls -inc: Trunk/Hatch/Tailgate and Remote Engine Start
- Door Mirrors, Steering Wheel and Pedals
- SYNC 3 -inc: enhanced voice recognition communications and entertainment system, 8" LCD capacitive touchscreen in center stack w/swipe capability, pinch-to-zoom capability included when equipped w/available voice-activated touchscreen navigation system, AppLink, 911 Assist, Apple CarPlay and Android Auto and 2 smart charging USB ports, Note: SYNC AppLink lets you control some of your favorite compatible mobile apps w/your voice, It is compatible w/select smartphone platforms, Commands may vary by phone and AppLink software

- Power 1st Row Windows w/Driver And Passenger 1-Touch Up/Down
- Power Door Locks w/Autolock Feature- Trip Computer- Driver Seat- Passenger Seat
- 60-40 Folding Split-Bench Front Facing Heated Fold-Up Cushion Rear Seat
- Power Tilt/Telescoping Steering Column
- FordPass Connect 4G LTE WiFi Mobile Hotspot Internet Access
- Heated Leather/Metal-Look Steering Wheel w/Auto Tilt-Away- Front Cupholder
- Rear Cupholder- Compass- Keypad- Remote Releases -Inc: Keyfob Cargo Access
- Garage Door Transmitter- Voice Activated Dual Zone Front Automatic Air Conditioning
- HVAC -inc: Underseat Ducts and Console Ducts - Glove Box- Full Cloth Headliner
- Leather/Chrome Gear Shift Knob
- Interior Trim -inc: Aluminum Instrument Panel Insert, Cabback Insulator, Genuine Wood/Metal-Look Door Panel Insert, Leather/Aluminum Console Insert and Chrome Interior Accents
- Day-Night Auto-Dimming Rearview Mirror
- Driver And Passenger Visor Vanity Mirrors w/Driver And Passenger Illumination
- 3 12V DC Power Outlets
- Full Overhead Console w/Storage, 3 12V DC Power Outlets and 2 AC Power Outlets
- Fade-To-Off Interior Lighting- Front And Rear Map Lights- Pickup Cargo Box Lights
- Voice-Activated Touchscreen Navigation -inc: pinch-to-zoom capability, SiriusXM Traffic and Travel Link, Note: SiriusXM Traffic and Travel Link includes a 5-year prepaid subscription, SiriusXM Traffic and Travel Link service is not available in Alaska or Hawaii, SiriusXM audio and data services each require a subscription sold separately, or as a package, by Sirius XM Radio Inc, If you decide to continue service after your trial, the subscription plan you choose will automatically renew thereafter and you will be charged according to your chosen payment method at then-current rates, Fees and taxes apply, To cancel you must call SiriusXM at 1-866-635-2349, See SiriusXM customer agreement for complete terms at www.siriusxm.com, All fees and programming subject to change, Sirius, XM and all related marks and logos are the trademarks of Sirius XM Radio Inc
- Instrument Panel Bin, Dashboard Storage, Driver / Passenger And Rear Door Bins and 2nd Row Underseat Storage
- Delayed Accessory Power- Power Adjustable Pedals- Outside Temp Gauge
- Systems Monitor- Redundant Digital Speedometer- Digital/Analog Display
- 2 Seatback Storage Pockets- Manual Adjustable Rear Head Restraints
- Front Center Armrest and Rear Center Armrest
- Securilock Anti-Theft Ignition (pats) Engine Immobilizer- Perimeter Alarm
- 3 12V DC Power Outlets and 2 AC Power Outlets

Mechanical

- Engine: 5.0L V8 -inc: auto start-stop technology and flex-fuel capability,
- Transmission: Electronic 10-Speed Automatic -inc: selectable drive modes: normal/tow-haul/snow-wet/EcoSelect/sport
- Transmission w/SelectShift Sequential Shift Control- 3.31 Axle Ratio
- GVWR: 7,000 lbs Payload Package- Electronic Transfer Case
- Automatic Full-Time Four-Wheel Drive
- 70-Amp/Hr 610CCA Maintenance-Free Battery w/Run Down Protection
- 200 Amp Alternator- Towing Equipment -inc: Trailer Sway Control
- Class IV Trailer Hitch Receiver -inc: towing capability up to TBD on 3.3L V6 PFDI engine (99B) and 2.7L EcoBoost engine (99P) or up to TBD on 3.5L EcoBoost engine (994), 3.5L EcoBoost High Output engine (99G) and 5.0L V8 engine (995), smart trailer tow connector and 4-pin/7-pin wiring harness Ordering the Trailer Tow Package does not include Integrated Brake Controller (67T). Integrated Brake Controller (67T) is a standalone option and must be ordered separately.
- Integrated Trailer Brake Controller- 2080# Maximum Payload
- Gas-Pressurized Shock Absorbers- Front Anti-Roll Bar
- Electric Power-Assist Speed-Sensing Steering- 26 Gal. Fuel Tank
- Single Stainless Steel Exhaust w/Chrome Tailpipe Finisher - Auto Locking Hubs
- Double Wishbone Front Suspension w/Coil Springs
- Leaf Rear Suspension w/Leaf Springs
- 4-Wheel Disc Brakes w/4-Wheel ABS, Front And Rear Vented Discs, Brake Assist, Hill Hold Control and Electric Parking Brake

Ask Jorge Lopez

askjorgelopez.com

281-205-0352

22702 Tomball Parkway

Tomball, TX 77375

© 2024 AutoRevo - All rights reserved. - Powered by AutoRevo