

# 2014 Jeep Wrangler Unlimited Sahara

View this car on our website at [hoppermotorplex.com/6565693/ebrochure](http://hoppermotorplex.com/6565693/ebrochure)



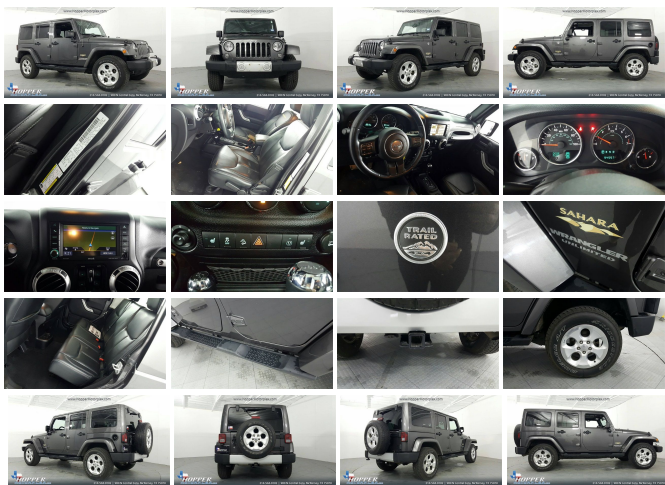
Our Price **\$24,750**

## Specifications:

<b>Year:</b>	2014
<b>VIN:</b>	1C4HJWEG9EL167763
<b>Make:</b>	Jeep
<b>Stock:</b>	67763M
<b>Model/Trim:</b>	Wrangler Unlimited Sahara
<b>Condition:</b>	Pre-Owned
<b>Body:</b>	SUV
<b>Exterior:</b>	Granite Crystal Metallic Clearcoat
<b>Engine:</b>	ENGINE: 3.6L V6 24V VVT
<b>Interior:</b>	Black Cloth
<b>Mileage:</b>	94,552
<b>Drivetrain:</b>	4 Wheel Drive
<b>Economy:</b>	City 16 / Highway 20

2014 Jeep Wrangler Unlimited Sahara Granite Crystal Metallic Clearcoat 2014 Jeep Wrangler 4D Sport Utility 4WD 5-Speed Automatic 3.6L V6 24V VVT


Recent Arrival!









2014 Jeep Wrangler Unlimited Sahara


Hopper Motorplex - 214-544-0102 - View this car on our website at [hoppermotorplex.com/6565693/ebrochure](http://hoppermotorplex.com/6565693/ebrochure)

## Vehicle History Report : as Of 01/18/2019

Snapshot

2014 JEEP WRANGLER UNLIMITED SAHARA

	No accidents reported to CARFAX
	No damage reported to CARFAX
	CARFAX 1-Owner vehicle
	At least 1 open recall
	8 Service history records
	94,552 Last reported odometer reading



**FREE CARFAX Report**

See the full CARFAX Report for additional information

\*carfax Snapshot is a reflection of available information on the date the report was pulled. carfax is constantly being updated with new information and is subject to change at any time.

## Our Location :



2014 Jeep Wrangler Unlimited Sahara

Hopper Motorplex - 214-544-0102 - View this car on our website at [hoppermotorplex.com/6565693/ebrochure](http://hoppermotorplex.com/6565693/ebrochure)

## Installed Options

### Interior

- 6-Way Driver Seat -inc: Manual Recline, Height Adjustment and Fore/Aft Movement
- 4-Way Passenger Seat -inc: Manual Recline and Fore/Aft Movement
- 60-40 Folding Split-Bench Front Facing Fold Forward Seatback Rear Seat
- Manual Tilt Steering Column
- Gauges -inc: Speedometer, Odometer, Engine Coolant Temp, Tachometer, Trip Odometer and Trip Computer
- Power Rear Windows and Removable 3rd Row Windows- Leather Steering Wheel
- Front Cupholder- Rear Cupholder- 2 12V DC Power Outlets- Compass
- Remote Keyless Entry w/Integrated Key Transmitter, Illuminated Entry and Panic Button
- Cruise Control w/Steering Wheel Controls- Manual Air Conditioning- Locking Glove Box
- Interior Trim -inc: Deluxe Sound Insulation, Metal-Look Instrument Panel Insert, Metal-Look Door Panel Insert and Metal-Look Interior Accents
- Leather/Chrome Gear Shift Knob- Cloth Bucket Seats -inc: adjustable head restraints
- Day-Night Auto-Dimming Rearview Mirror- Driver And Passenger Visor Vanity Mirrors
- Full Floor Console w/Locking Storage, 2 12V DC Power Outlets and 1 AC Power Outlet
- Front Map Lights- Fade-To-Off Interior Lighting
- Full Carpet Floor Covering -inc: Carpet Front And Rear Floor Mats
- Carpet Floor Trim, Carpet And Rubber Mat
- Instrument Panel Bin, Dashboard Storage, Driver And Passenger Door Bins
- Power 1st Row Windows w/Driver And Passenger 1-Touch Down
- Delayed Accessory Power- Power Door Locks w/Autolock Feature- Trip Computer
- Outside Temp Gauge- Analog Display
- Manual Adjustable Front Head Restraints and Fixed Rear Head Restraints
- Front Center Armrest w/Storage- 2 Seatback Storage Pockets- Perimeter Alarm
- Sentry Key Engine Immobilizer - 2 12V DC Power Outlets and 1 AC Power Outlet

### Exterior

Wheels: 18" x 7.5J Deluxed Split Spoke - Tires: P255/70R18 GMW Cap/Of Road

- Wheels: 18" x 7.5" Polished Satin Carbon- Tires: P255/70R18 OWL On/Off Road
- Aluminum Spare Wheel- Full-Size Spare Tire Mounted Outside Rear- Clearcoat Paint
- Sunrider Soft Top
- Black Front Bumper w/Metal-Look Rub Strip/Fascia Accent and 2 Tow Hooks
- Black Rear Bumper w/Metal-Look Rub Strip/Fascia Accent and 1 Tow Hook
- Black Side Windows Trim- Black Door Handles- Body-Colored Fender Flares
- Black Power Heated Side Mirrors w/Manual Folding- Removable Rear Window
- Deep Tinted Glass- Variable Intermittent Wipers- Fully Galvanized Steel Panels
- Convertible w/Fixed Roll-Over Protection- Body-Colored Grille- Side Steps
- Conventional Rear Cargo Access- Tailgate/Rear Door Lock Included w/Power Door Locks
- Fully Automatic Aero-Composite Halogen Headlamps- Front Fog Lamps

## Safety

- 6-Way Driver Seat -inc: Manual Recline, Height Adjustment and Fore/Aft Movement
- 4-Way Passenger Seat -inc: Manual Recline and Fore/Aft Movement
- 60-40 Folding Split-Bench Front Facing Fold Forward Seatback Rear Seat
- Manual Tilt Steering Column
- Gauges -inc: Speedometer, Odometer, Engine Coolant Temp, Tachometer, Trip Odometer and Trip Computer
- Power Rear Windows and Removable 3rd Row Windows- Leather Steering Wheel
- Front Cupholder- Rear Cupholder- 2 12V DC Power Outlets- Compass
- Remote Keyless Entry w/Integrated Key Transmitter, Illuminated Entry and Panic Button
- Cruise Control w/Steering Wheel Controls- Manual Air Conditioning- Locking Glove Box
- Interior Trim -inc: Deluxe Sound Insulation, Metal-Look Instrument Panel Insert, Metal-Look Door Panel Insert and Metal-Look Interior Accents
- Leather/Chrome Gear Shift Knob- Cloth Bucket Seats -inc: adjustable head restraints
- Day-Night Auto-Dimming Rearview Mirror- Driver And Passenger Visor Vanity Mirrors
- Full Floor Console w/Locking Storage, 2 12V DC Power Outlets and 1 AC Power Outlet
- Front Map Lights- Fade-To-Off Interior Lighting
- Full Carpet Floor Covering -inc: Carpet Front And Rear Floor Mats
- Carpet Floor Trim, Carpet And Rubber Mat
- Instrument Panel Bin, Dashboard Storage, Driver And Passenger Door Bins
- Power 1st Row Windows w/Driver And Passenger 1-Touch Down
- Delayed Accessory Power- Power Door Locks w/Autolock Feature- Trip Computer
- Outside Temp Gauge- Analog Display
- Manual Adjustable Front Head Restraints and Fixed Rear Head Restraints
- Front Center Armrest w/Storage- 2 Seatback Storage Pockets- Perimeter Alarm
- Sentry Key Engine Immobilizer- 2 12V DC Power Outlets and 1 AC Power Outlet

## Mechanical

- Engine: 3.6L V6 24V VVT- Transmission: 6-Speed Manual (NSG370)
- 3.21 Rear Axle Ratio- Heavy Duty Suspension w/Gas Shocks- GVWR: 5,500 lbs
- Manual Transfer Case- Part-Time Four-Wheel Drive- Engine Oil Cooler
- 600CCA Maintenance-Free Battery- 160 Amp Alternator
- Towing Equipment -inc: Trailer Sway Control- 2 Skid Plates- 880# Maximum Payload
- HD Shock Absorbers- Front And Rear Anti-Roll Bars- Hydraulic Power-Assist Steering
- 22.5 Gal. Fuel Tank- Single Stainless Steel Exhaust- Auto Locking Hubs
- Leading Link Front Suspension w/Coil Springs
- Trailing Arm Rear Suspension w/Coil Springs
- 4-Wheel Disc Brakes w/4-Wheel ABS, Front And Rear Vented Discs, Brake Assist and Hill Hold Control
- Brake Actuated Limited Slip Differential

## Option Packages

### Factory Installed Packages

ENGINE: 3.6L V6 24V VVT

SUPPLEMENTAL FRONT SEAT SIDE AIR BAGS

\$495

Option Packages Total  
\$495



All vehicles are pre-owned. The e-Price is a cash price and excludes tax, title, license and \$50.00 doc fee. Prices subject to change. Contact our Sales Team for detailed information.

---

Hopper Motorplex  
[hoppermotorplex.com](http://hoppermotorplex.com)  
214-544-0102  
900 N Central Expy  
McKinney, Texas 75070

© 2019 AutoRevo - All rights reserved. - Powered by [AutoRevo](#)