



## 2011 Ford Super Duty F-350 SRW Pickup XLT 6.7L 32-VALVE POWER STROKE V8 DIESEL ENGINE

**Our No-Haggle Price \$19,987**

**Book Retail Value \$26,630**

View this vehicle on our website at [leesburgautoimport.com](http://leesburgautoimport.com)

Leesburg Auto Import

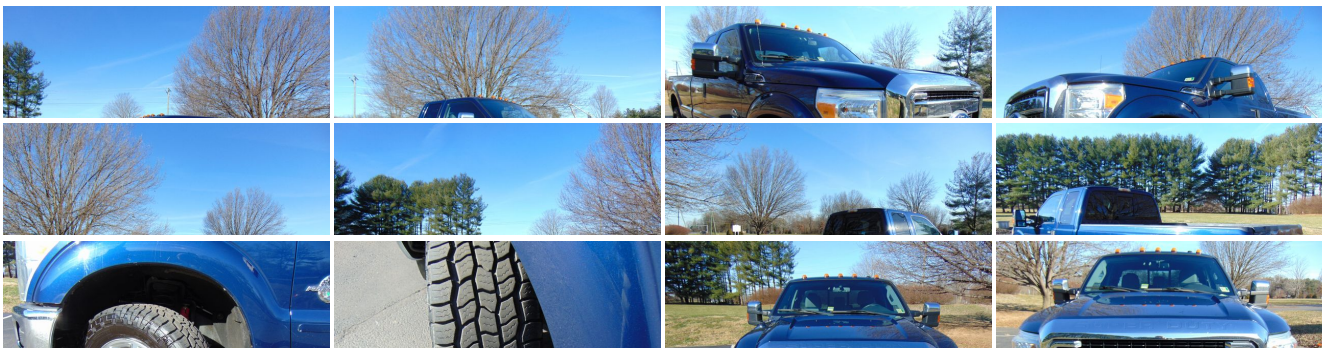
Toll Free: 1-866-249-5348, Local: 703-771-7600

2 Fairfax St SE, Leesburg, Virginia 20175

[Photos](#)

[Details](#)

[Contact](#)





## Specifications:

<b>Year:</b>	2011
<b>VIN:</b>	1FT8X3BT0BEB79072
<b>Make:</b>	Ford
<b>Stock:</b>	LB79072
<b>Model/Trim:</b>	Super Duty F-350 SRW Pickup XLT 6.7L 32-VALVE POWER STROKE V8 DIESEL ENGINE
<b>Condition:</b>	Pre-Owned
<b>Body:</b>	Pickup Truck
<b>Exterior:</b>	BLUE
<b>Engine:</b>	6.7L 32-VALVE POWER STROKE V8 DIESEL ENGINE
<b>Interior:</b>	Cloth
<b>Mileage:</b>	140,940
<b>Drivetrain:</b>	4 Wheel Drive

## Vehicle Description

Welcome to Leesburg Auto Import, the home of the best used cars in the east coast. We pride ourselves on our competitive and unbeatable prices. We buy cars and accept trade in.

### Installed Options

#### Interior

- (2) aux pwr outlets in instrument panel
- Cloth 40/20/40 split bench front seat -inc: center armrest, cupholder, storage, center underseat storage w/aux pwr outlet
- Dual color-keyed vinyl sunvisors-inc: covered mirrors
- Front/rear color-keyed carpeted floor mats- Pwr door locks w/backlit switches
- Pwr windows w/driver one-touch-down & backlit switches
- Remote keyless entry & perimeter anti-theft alarm - (4) air registers w/positive shut-off
- 3-blink lane change signal- Accessory delay
- Air conditioning w/chrome ringed black vents - Cloth 60/40 fold-up rear split bench seat
- Color-keyed carpet full-floor covering- Color-keyed cloth headliner
- Color-keyed door trim panel -inc: color-keyed soft armrest, pwr switch bezel, molded upper applique, upper & lower map pockets, grab handle & reflector
- Color-keyed scuff plates- Cruise control- Dash-top tray
- Driver & front passenger grab handles- Driver manual lumbar support
- Dual color-keyed coat hooks
- Front door operated dome lamp w/time delay off & IP switch - Front map lamps
- Front passenger-side roof ride handle- Glove box
- Instrument panel mounted storage bin & trash bag hook
- Map pockets w/integrated "closed containers only" cupholders
- Multifunction switch message center -inc: ice blue lighting, 3-button message control on steering wheel
- Oil minder system
- Overhead console -inc: storage bins for garage door opener & sunglasses
- SecuriLock anti-theft ignition- Tilt/telescoping steering column

#### Exterior

- (5) LT245/75R17E all-season BSW tires
- 17" 5-spoke cast aluminum wheels -inc: bright center ornaments
- Full-size spare tire w/lock & carrier

### Option Packages

#### Factory Installed Packages

<b>6.7L 32-VALVE POWER STROKE V8 DIESEL ENGINE</b>	
-inc: diesel emission fluid system, engine exhaust braking in tow/haul mode, 750 CCA 78-AH dual batteries, intelligent oil life minder, 14K trailer hitch receiver w/2.5" trailer hitch & 2" reducer sleeve	<b>\$7,835</b>

<b>Option Packages Total</b>	<b>\$7,835</b>
------------------------------	----------------

- Manually telescoping pwr heated trailer tow mirrors -inc: turn signals, integrated clearance lights, heated convex spotter mirror
- Black door handles- Box-rail & tailgate top-edge moldings
- Chrome front bumper w/grained top cover - Chrome rear bumper
- Dual beam jewel-effect headlamps- Dual rear access doors
- Flip-out rear quarter windows- Front fender vents- Front/rear license plate brackets
- Grille w/medium platinum insert & chrome surround - Interval windshield wipers
- Pickup box/cargo lights- Rear privacy glass
- Removable locking tailgate w/black handle & TailGate Assist - Solar tinted glass
- Underhood service light

## Safety

- (2) aux pwr outlets in instrument panel
- Cloth 40/20/40 split bench front seat -inc: center armrest, cupholder, storage, center underseat storage w/aux pwr outlet
- Dual color-keyed vinyl sunvisors-inc: covered mirrors
- Front/rear color-keyed carpeted floor mats- Pwr door locks w/backlit switches
- Pwr windows w/driver one-touch-down & backlit switches
- Remote keyless entry & perimeter anti-theft alarm - (4) air registers w/positive shut-off
- 3-blink lane change signal- Accessory delay
- Air conditioning w/chrome ringed black vents - Cloth 60/40 fold-up rear split bench seat
- Color-keyed carpet full-floor covering- Color-keyed cloth headliner
- Color-keyed door trim panel -inc: color-keyed soft armrest, pwr switch bezel, molded upper applique, upper & lower map pockets, grab handle & reflector
- Color-keyed scuff plates- Cruise control- Dash-top tray
- Driver & front passenger grab handles- Driver manual lumbar support
- Dual color-keyed coat hooks
- Front door operated dome lamp w/time delay off & IP switch - Front map lamps
- Front passenger-side roof ride handle- Glove box
- Instrument panel mounted storage bin & trash bag hook
- Map pockets w/integrated "closed containers only" cupholders
- Multifunction switch message center -inc: ice blue lighting, 3-button message control on steering wheel
- Oil minder system
- Overhead console -inc: storage bins for garage door opener & sunglasses
- SecuriLock anti-theft ignition- Tilt/telescoping steering column

## Mechanical

- (2) front tow hooks- 12.5K trailer hitch receiver -inc: 2" hitch
- 6.2L SOHC 16-valve EFI NA V8 flex-fuel engine -inc: engine idle meter
- TorqShift 6-speed automatic transmission w/tow/haul mode (REQ: 996 Engine)
- 157-amp HD alternator- 2-ton mechanical jack- 3.73 axle ratio (REQ: 996 Engine)
- 4-wheel drive- 72 amp/hr (650 CCA) battery
- 8' pickup box -inc: (6) tie-down hooks, partitionable & stackable storage
- Front stabilizer bar- HD gas shock absorbers - Manual transfer case & hubs
- Mono-beam front axle w/coil spring suspension
- Pwr 4-wheel disc brakes w/vacuum boost- Pwr steering w/steering damper
- Stationary elevated engine idle control (SEIC)
- Trailer brake controller "Compatible w/select electric over hydraulic brakes" \*w/66D Pickup Box Delete, 7 & 4 way combo trailer tow socket & bracket deleted"
- Trailer tow pkg -inc: 7-wire harness w/relays, 7/4 pin combination connector

Price excludes \$599.00 processing fee, registration fees and state and local sales taxes. 3% surcharge will be added on all CC charges over \$500.00. Deposits are non-refundable. All our sales are based on first-come-first-serve policy. We work very hard to accurately describe our vehicles through text descriptions and elaborate photos. When you purchase a pre-owned vehicle it is not a new vehicle. Any used vehicle can have normal wear and blemishes. Please read the descriptions thoroughly and view all pictures.

Leesburg Auto Import

Leesburg Auto Import

View this car on our website at [leesburgautoimport.com/6565549](http://leesburgautoimport.com/6565549)

Website: [leesburgautoimport.com](http://leesburgautoimport.com)

Phone: Toll Free: 1-866-249-5348, Local: 703-771-7600

Map: 2 Fairfax St SE, Leesburg, Virginia 20175

