



2013 BMW 135i M-Sport JB4 Tune 400+ HP

Website Price \$18,995

View this vehicle on our website at autoparkdallas.com



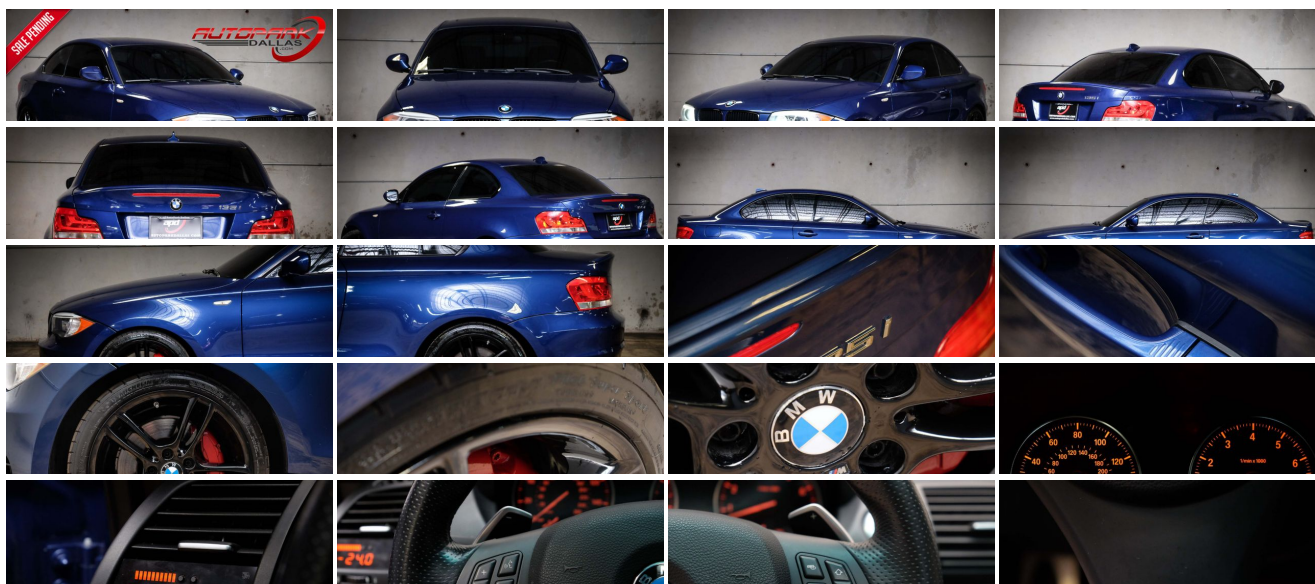
(214) 945-2601

2061 S Stemmons Fwy , Lewisville, TX 75067

Photos

Details

Contact



Specifications:

Year:	2013
VIN:	WBAUC9C51DVM13488
Make:	BMW
Model/Trim:	135i M-Sport JB4 Tune 400+ HP
Condition:	Pre-Owned
Body:	Coupe
Exterior:	Le Mans Blue Metallic
Engine:	3.0-liter dual overhead cam (DOHC), 24-valve inline turbocharged 300-hp 6-cylinder engine w/TwinPower turbo technology, piezo fuel injection, Double-VANOS steplessly variable valve timing
Interior:	Black Leather
Transmission:	7-SPEED DOUBLE CLUTCH AUTOMATIC TRANSMISSION
Mileage:	56,205
Drivetrain:	Rear Wheel Drive

Vehicle Description

AutoPark Dallas is excited to offer you this 2013 BMW 135i M-Sport for sale! The BMW enjoys a well-deserved reputation for bundling outstanding driving dynamics, excellent quality and undeniable prestige into gorgeous piece of metal. There is no denying that everybody knows the signature look of a BMW, which this 135i doesn't let that reputation down. These are a beautiful piece of machinery that can make anybody feel important on the road and to their peers. Stop by our indoor showroom to check out this beautiful BMW amongst out 60+ cars parked in our indoor 16,000 Sq Ft Showroom located in Addison, TX!

2013 BMW 135i M-Sport

2 Set of Keys!

400+ Horsepower!

MODIFICATIONS!

Custom Gloss Black BMW Wheels

Custom Gloss Red Calipers

Burger Motorsports JB4 Tune

Burger Motorsports Cold-Air Intake

Mishimoto Performance Intercooler

Mishimoto Steel Braided Intercooler Lines

Upgraded Intercooler Charge Pipe

PR1 Boost Gauge

LED Conversion Kit

Window Tinted

STOCK!

Le Mans Blue Metallic Exterior

Black Boston Leather Interior

M Sport Package!

Premium Package!

Hands Free Bluetooth
Comfort Access Keyless Entry
Push Button Start
Powered Moonroof
Power Folding Mirrors
Sport Mode
3.0L DOHC 24-Valve Inline Turbocharged 6-Cyl Engine
7-Speed Automatic Transmission
Rear Wheel Drive
Manual Mode w/ Paddle Shifters
Steering Wheel Mounted Controls
Dual Climate Controls
Driver Seat Memory
Powered Driver & Passenger Seats
Professionally Detailed!
Well Maintained!
AND SO MUCH MORE!!!

Financing is available!

Get pre-approved in no time by filling out a credit application on the finance section of our website!

We also offer different extended warranty options!

****All vehicles are priced for QUICK SALE. All REASONABLE offers will be considered****

AutoPark Dallas is dedicated to offering a level of customer service not usually found in the automobile industry. We take pride in continuing this service long after the vehicle has been delivered. We strive for excellence and make every effort to see that our customer is completely satisfied with every purchase. Referrals and Testimonials is what our business is built on.

Our extensive buying experience guarantees quality, pre-owned and new vehicles hand-picked from factory sources. Our love for the automobile and our dislike of traditional dealership tactics motivate us to provide the service we do!

Pre-purchase inspections are always welcomed! We also offer airport shuttles, amazing finance options, extended warranties and so much more!

We accept trade-ins, will BUY your car (modified or not) even if you don't buy one from us, and offer consignment deals to SELL your vehicle for you! For more information just give us a CALL or TEXT!!

#214-945-2601

Call or Text **Anytime!**

Se habla Español

WWW.AUTOPARKDALLAS.COM

Installed Options

Interior

- 8-way pwr front bucket seats -inc: pwr lumbar support, driver memory, 2-way adjustable headrests, manual height adjustment for front passenger seat
- Anthracite wood trim
- Central locking system -inc: center console switch (leaves gas filler door unlocked), double-lock feature, 2-step unlocking
- Coded driveaway protection- Floor mats- Leatherette upholstery
- Sports leather-wrapped multi-function sports steering wheel
- Automatic climate control -inc: micro-filter, automatic air recirculation, left/right temperature control, MAX A/C, heat at rest, recall of individual user settings
- Check control vehicle monitor system w/pictogram display, oil status display, condition Based Service indicator
- Cruise control- Front-door storage compartments- Front-seat center armrest
- Front-seat cupholders
- On-board computer w/check control provides feedback on the vehicle's operating status: oil level indicator and distance to next service appointment/oil change, as well as other detailed information, such as spark plug and micro-filter status. It also provides travel information travel range on remaining fuel, external temperature, and more
- Power front windows -inc: "one-touch" up/down operation- Rear window defroster
- Service interval indicator w/miles-to-service readout- Smoker's pkg
- Split fold-down rear seats- Tilt/telescopic steering-wheel column

Exterior

- V spoke (style 372) light alloy wheels, 18 x 7.5 front, 18 x 8.5 rear -inc: P215/40R18 front & P245/35R18 rear run-flat performance tires
- 2-way power glass moonroof w/one-touch operation, sliding interior sunshade
- Adaptive brake lights- Aerodynamic kit- Black chrome-plated exhaust tips
- Chrome-line exterior trim- Exterior parts in body color
- Heated dual power mirrors and heated windshield washer jets w/mirror memory
- Rain-sensing windshield wipers and automatic headlight control- Rear spoiler
- Retractable headlight washers
- Xenon adaptive headlights -inc: auto-leveling, cornering lights

Safety

- 8-way pwr front bucket seats -inc: pwr lumbar support, driver memory, 2-way adjustable headrests, manual height adjustment for front passenger seat
- Anthracite wood trim
- Central locking system -inc: center console switch (leaves gas filler door unlocked), double-lock feature, 2-step unlocking
- Coded driveaway protection- Floor mats- Leatherette upholstery
- Sports leather-wrapped multi-function sports steering wheel
- Automatic climate control -inc: micro-filter, automatic air recirculation, left/right temperature control, MAX A/C, heat at rest, recall of individual user settings
- Check control vehicle monitor system w/pictogram display, oil status display, condition Based Service indicator
- Cruise control- Front-door storage compartments- Front-seat center armrest
- Front-seat cupholders
- On-board computer w/check control provides feedback on the vehicle's operating status: oil level indicator and distance to next service appointment/oil change, as well as other detailed information, such as spark plug and micro-filter status. It also provides travel information travel range on remaining fuel, external temperature, and more
- Power front windows -inc: "one-touch" up/down operation- Rear window defroster
- Service interval indicator w/miles-to-service readout- Smoker's pkg
- Split fold-down rear seats- Tilt/telescopic steering-wheel column

Mechanical

- 6-speed manual transmission- Pwr steering
- 3.0-liter dual overhead cam (DOHC), 24-valve inline turbocharged 300-hp 6-cylinder engine w/TwinPower turbo technology, piezo fuel injection, Double-VANOS steplessly variable valve timing
- Aluminum double-pivot spring and strut-type front suspension- Electronic throttle control
- Engine start/stop button
- Extensive aluminum componentry, including front suspension components (forged-aluminum lower arms); subframe; steering rack; and brake components
- Five-link fully independent rear suspension in lightweight steel
- Front and rear anti-roll (stabilizer) bars- M sport suspension- Rear-wheel drive
- Twin-tube gas-pressure shock absorbers

Option Packages

Factory Installed Packages

7-SPEED DOUBLE CLUTCH AUTOMATIC TRANSMISSION	
-inc: steering wheel mounted paddle shifters	\$450

M SPORT PKG	
-inc: 18" x 7.5" front & 18" x 8.5" rear double-spoke light alloy wheels (style 261M), P215/40R18 front & P245/35R18 rear performance run-flat tires, 8-way pwr front sport seats w/driver memory & adjustable back bolster, M steering wheel, shadowline exterior trim, Anthracite headliner, increased top speed limiter	\$1,300

M SPORTS LEATHER-WRAPPED MULTI-FUNCTION STEERING WHEEL W/PADDLE SHIFTERS	
	\$120

PREMIUM PKG	
-inc: universal garage-door opener, Comfort Access keyless entry, satellite radio w/(1) year subscription, auto-dimming rearview mirror w/compass, auto-dimming exterior mirrors, ambiance lighting, Boston leather	\$2,400

SHADOWLINE EXTERIOR TRIM	
--------------------------	--

SPORT SEATS	
	\$400

FINE-WOOD TRIM 'FINELINE' STREAM	
----------------------------------	--

LE MANS BLUE METALLIC	
	\$550

STANDARD PAINT	
----------------	--

BLACK, BOSTON LEATHER SEAT TRIM	
	\$1,450

Option Packages Total	
	\$6,670

AUTOPARK

Dallas

Auto Park Dallas

View this car on our website at autoparkdallas.com/6564972

Website: autoparkdallas.com

Phone: (214) 945-2601

Map: 2061 S Stemmons Fwy, Lewisville, TX 75067

