



2007 BMW X5 3.0si 3.0i

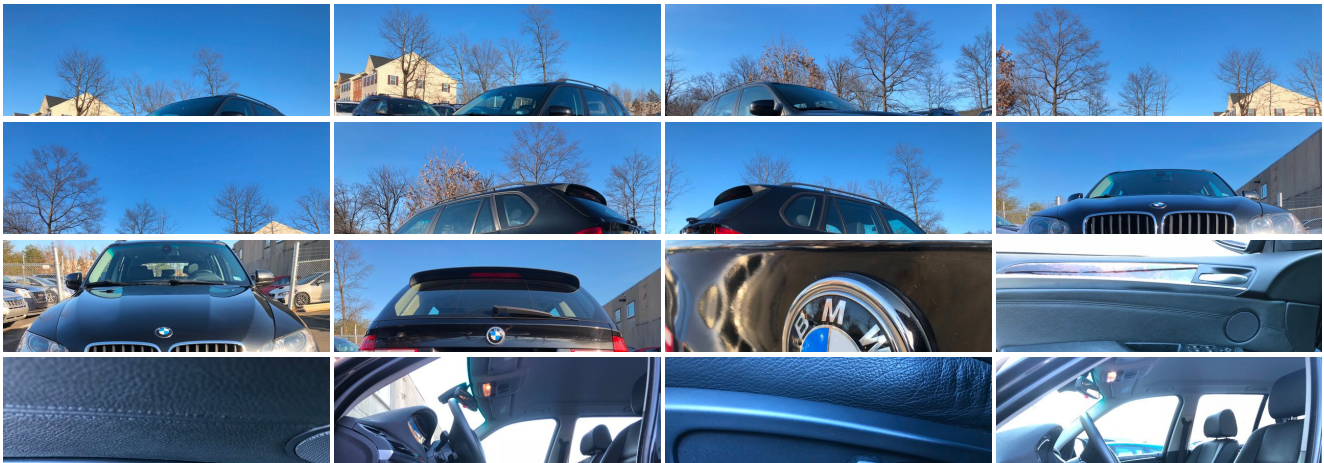
NO HAGGLE CASH PRICE! \$8,887

View this vehicle on our website at sterlingmotorsport.com

571-313-1989

9 Douglas Court Unit 101, Sterling, VA 20166

- Photos
- Details
- Contact





Specifications:

Year:	2007
VIN:	5UXFE43567L017046
Make:	BMW
Stock:	017046
Model/Trim:	X5 3.0si 3.0i
Condition:	Pre-Owned
Body:	SUV
Exterior:	BLACK
Engine:	3.0L DOHC 24-valve I6 engine-inc: double-VANOS steplessly variable valve timing, Valvetronic, 3-stage induction system
Mileage:	69,940
Drivetrain:	All Wheel Drive
Economy:	City 17 / Highway 23

Vehicle Description

Installed Options

Interior

- Leatherette seat trim
- 10-way pwr front seats-inc: 3-position driver seat memory, headrests
- Front console-inc: removable flashlight, dual storage compartments w/lids & armrests, accessory pwr outlet
- Leather-wrapped pwr tilt/telescopic multi-function steering wheel-inc: auto tilt away, 3-position memory
- Pwr windows-inc: pwr retention, 1-touch open/close, anti-trapping feature, close from exterior lock
- Central locking system-inc: double-lock, selective unlocking, glovebox
- Remote keyless entry-inc: selective unlocking, tailgate release, interior light actuation, window down, alarm
- Anti-theft alarm system w/interior motion detector
- Enhanced coded driveaway protection
- Dual-zone automatic climate control-inc: auto recirculation, misting control, bi-directional solar sensor, temp-controlled rear air outlets, toggle control for custom air distribution settings, max A/C function, activated charcoal micro-filter ventilation
- Anti-theft AM/FM stereo w/CD player-inc: MP3 capability, auxiliary audio input jack, radio data system (RDS), weather band, (12) speakers w/ (2) subwoofers
- Fully finished cargo area-inc: accessory pwr outlet, retractable/removable cover, (4) tie-downs
- 2nd row split-folding seats-inc: flush-fold function, fold-up center armrest, headrests
- Electronic analog speedometer & tachometer- LCD main & trip odometers
- Tire pressure monitor
- iDrive system-inc: on-board computer, 6.5" color display, (5) menus, controller, (6) programmable memory keys
- Dynamic cruise control- Remote tailgate release- Vehicle key & memory
- Rear window defroster- FM diversity antenna system- Prep for CD changer
- Pwr upper & lower locking gloveboxes- Front/rear cupholders
- Smokers pkg-inc: ashtray & lighter- Graphite trim
- Storage compartments in all (4) doors- Dual front sun visors w/illuminated vanity mirrors
- BMW ambient lighting
- Courtesy lights-inc: fade in/out feature, dual front reading lights, front footwell lighting, (2) cargo compartment lights in tailgate
- Seatback storage compartments

Exterior

- Programmable daytime running lights
- Body-color & black pwr mirrors-inc: 3-position memory, passenger reverse auto-tilt-down

- Rain-sensing windshield wipers w/heated washer jets
- Variable intermittent rear window wiper w/washer- Roof rails
- Rear roof spoiler w/separation edges- Body-color bodyside cladding
- BMW kidney grille w/black vertical bars- Matte-black side window frame trim
- Xenon adaptive automatic headlights-inc: dynamic auto-leveling, auto headlight control, cornering lights
- Front fog lights- Adaptive brakelights- Body-color door handles
- 2-piece tailgate w/soft-close feature

Safety

- Leatherette seat trim
- 10-way pwr front seats-inc: 3-position driver seat memory, headrests
- Front console-inc: removable flashlight, dual storage compartments w/lids & armrests, accessory pwr outlet
- Leather-wrapped pwr tilt/telescopic multi-function steering wheel-inc: auto tilt away, 3-position memory
- Pwr windows-inc: pwr retention, 1-touch open/close, anti-trapping feature, close from exterior lock
- Central locking system-inc: double-lock, selective unlocking, glovebox
- Remote keyless entry-inc: selective unlocking, tailgate release, interior light actuation, window down, alarm
- Anti-theft alarm system w/interior motion detector
- Enhanced coded driveaway protection
- Dual-zone automatic climate control-inc: auto recirculation, misting control, bi-directional solar sensor, temp-controlled rear air outlets, toggle control for custom air distribution settings, max A/C function, activated charcoal micro-filter ventilation
- Anti-theft AM/FM stereo w/CD player-inc: MP3 capability, auxiliary audio input jack, radio data system (RDS), weather band, (12) speakers w/ (2) subwoofers
- Fully finished cargo area-inc: accessory pwr outlet, retractable/removable cover, (4) tie-downs
- 2nd row split-folding seats-inc: flush-fold function, fold-up center armrest, headrests
- Electronic analog speedometer & tachometer- LCD main & trip odometers
- Tire pressure monitor
- iDrive system-inc: on-board computer, 6.5" color display, (5) menus, controller, (6) programmable memory keys
- Dynamic cruise control- Remote tailgate release- Vehicle key & memory
- Rear window defroster- FM diversity antenna system- Prep for CD changer
- Pwr upper & lower locking gloveboxes- Front/rear cupholders
- Smokers pkg-inc: ashtray & lighter- Graphite trim
- Storage compartments in all (4) doors- Dual front sun visors w/illuminated vanity mirrors
- BMW ambiance lighting
- Courtesy lights-inc: fade in/out feature, dual front reading lights, front footwell lighting, (2) cargo compartment lights in tailgate
- Seatback storage compartments

Mechanical

- Dynamic stability control (DSC)-inc: electronic brake proportioning, cornering & braking stability enhancement, dynamic brake control, hill descent control, trailer-towing stabilization, rollover protection system, traction control
- P255/55HR18 run-flat all-season tires- 18" x 8.5" star spoke alloy wheels (style 210)
- Space saver spare- Variable-ratio constant-assist pwr steering
- 4-wheel anti-lock braking system (ABS)
- 3.0L DOHC 24-valve I6 engine-inc: double-VANOS steplessly variable valve timing, Valvetronic, 3-stage induction system
- Electronically controlled engine cooling
- Electric water pump & volume-controlled oil pump
- Direct ignition system w/knock control
- 6-speed Steptronic automatic transmission-inc: OD, adaptive transmission control, sport & manual modes, electronic selector
- xDrive full-time all-wheel drive system w/front/rear torque split- Prep for trailer hitch
- Double wishbone multi-link front suspension-inc: aluminum thrust plate, coil springs
- Integral 4-link rear suspension-inc: aluminum upper & lower arms, aluminum wheel carriers, coil springs
- Front/rear stabilizer bars- Twin-tube gas-pressure shocks
- 4-wheel ventilated pwr disc brakes-inc: brake fade compensation, brake standby, brake drying, auto hold function
- Electromechanical parking brake- Dual exhaust system- Toolkit

Price excludes \$699.00 processing fee, registration fees and State and Local sales taxes. 3% surcharge will be added on all CC charges over \$500.00. Deposits are non-refundable. All our sales are based on first-come-first-serve policy. We work very hard to accurately describe our vehicles through text descriptions and elaborate photos. When you purchase a pre-owned vehicle it is not a new vehicle. Any used vehicle can have normal wear and blemishes. Please read the descriptions thoroughly and view all pictures.

Sterling Motorsport

Sterling Motorsport

View this car on our website at sterlingmotorsport.com/6564151

Website: sterlingmotorsport.com

Phone: [571-313-1989](tel:571-313-1989)

Map: [9 Douglas Court Unit 101, Sterling, VA 20166](#)

