

2014 Ferrari 458 Italia Spider MSRP 308K,NAV,BACK-UP CAM,6 DISK CD,4K!

View this car on our website at tveauto.com/6563496/ebrochure



Our Price **\$219,900**

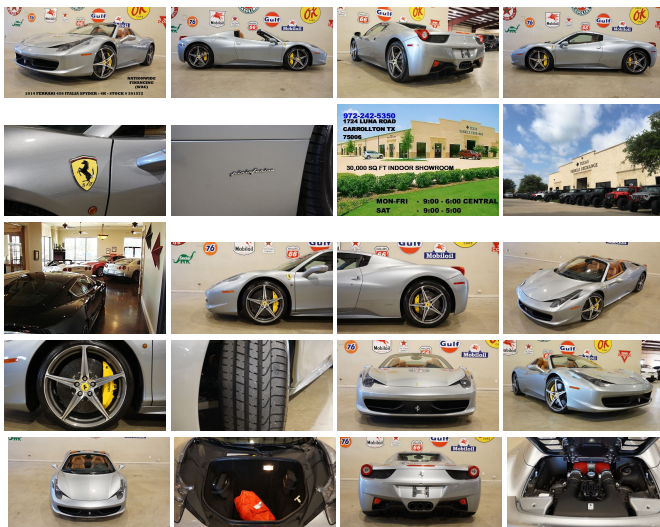
Specifications:

Year:	2014
VIN:	ZFF68NHAXE0201572
Make:	Ferrari
Stock:	201572
Model/Trim:	458 Italia Spider MSRP 308K,NAV,BACK-UP CAM,6 DISK CD,4K!
Condition:	Pre-Owned
Body:	Convertible
Exterior:	Argento Nurburging Metallic
Engine:	Engine: 4.5L DOHC V8 w/Direct Injection
Interior:	Beige Suede/Leather
Mileage:	4,025
Drivetrain:	Rear Wheel Drive
Economy:	City 13 / Highway 17

NATION WIDE FINANCING

SUBMIT CREDIT APP WWW.TVEAUTO.COM

OR CALL 972-242-5350




2014 FERRARI 458 ITALIA SPIDER, 4.5L V8 ENGINE, 7 SPEED DUAL CLUTCH AUTOMATIC/MANUAL TRANSMISSION, ONLY 4K, ARGENTO NURBURGING METALLIC W/BEIGE LEATHER & ALCANTARA INTERIOR, CARFAX REPORTS 3 OWNERS NO ACCIDENTS, APPEARS TO BE A NON-SMOKER, PUSH BUTTON START, FRONT & REAR PARK DISTANCE SENSORS, FRONT SUSPENSION LIFTER, POWER FOLDING HARD TOP, NAVIGATION, BACK-UP CAMERA, POWER WINDOWS, POWER DOOR LOCKS, POWER FOLDING MIRRORS, POWER

FOLDING MIRRORS, POWER
TILT/TELESCOPE STEERING WHEEL WITH
AUDIO CONTROLS, PADDLE SHIFTERS,
DUAL POWER BUCKET SEATS, ESC
CONTROL, WET/SPORT/RACE/CT OFF
MODES, SUSPENSION BUTTON, ICE COLD
A/C, DUAL CLIMATE CONTROL, JBL
AM/FM/SIRIUS STEREO WITH 6 DISK CD
CHANGER, BLUETOOTH, SELF DIMMING
REAR VIEW MIRROR, HOMELINK GARAGE
CONTROLS, PASSENGER VANITY MIRROR,
SPORT EXHAUST SYSTEM, CAR COVER,
FLOOR MATS, OWNER'S MANUAL, 2 KEYS/2
REMOTES. 20 IN FORGED WHEELS,
BREMBO CARBON CERAMIC BRAKES,
FRONT TIRES ARE PIRELLI 235/35ZR/20,
REAR TIRES ARE PIRELLI 295/35ZR/20.
RUNS AND DRIVES GREAT. GIVE US A
CALL @ 972-242-5350 OR STOP BY FOR A
TEST DRIVE. 1724 LUNA RD IN
CARROLLTON - 2 MILES NORTH OF 635.
CLICK ON CARFAX ICON TO VIEW A FULL
REPORT AT NO COST TO YOU.




2014 Ferrari 458 Italia Spider MSRP 308K,NAV,BACK-UP CAM,6 DISK CD,4K!

Texas Vehicle Exchange - 972-242-5350 - View this car on our website at veauto.com/6563496/ebrochure

Vehicle History Report : as Of 01/22/2019

 Snapshot

2014 FERRARI 458 SPIDER

	No accidents reported to CARFAX
	No damage reported to CARFAX
	3 Previous owners
	2 Service history records
	Personal vehicle
	4,025 Last reported odometer reading

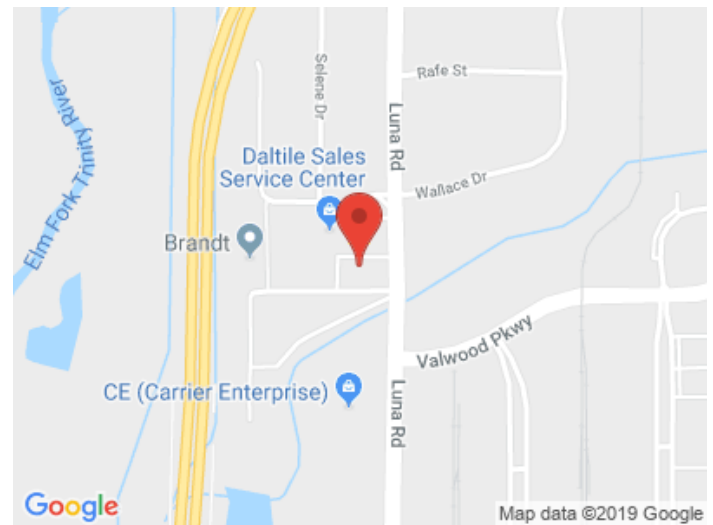


FREE CARFAX Report

See the full CARFAX Report for additional information

*carfax Snapshot is a reflection of available information on the date the report was pulled. carfax is constantly being updated with new information and is subject to change at any time.

Our Location :



2014 Ferrari 458 Italia Spider MSRP 308K,NAV,BACK-UP CAM,6 DISK CD,4K!

Texas Vehicle Exchange - 972-242-5350 - View this car on our website at veauto.com/6563496/ebrochure

Installed Options

Interior

- 1 12V DC Power Outlet- 4-Way Driver Seat -inc: Manual Recline and Fore/Aft Movement
- 4-Way Passenger Seat -inc: Manual Recline and Fore/Aft Movement - Air Filtration
- Analog Display- Bucket Front Seats- Cargo Space Lights- Carpet Floor Trim
- Day-Night Rearview Mirror- Driver And Passenger Door Bins- Driver Foot Rest
- Dual Zone Front Automatic Air Conditioning- Engine Immobilizer
- FOB Controls -inc: Trunk/Hatch/Tailgate- Fade-To-Off Interior Lighting
- Fixed Front Head Restraints- Front Cupholder- Front Map Lights
- Full Carpet Floor Covering -inc: Carpet Front Floor Mats- Full Cloth Headliner
- Full Floor Console w/Storage and 1 12V DC Power Outlet
- Gauges -inc: Speedometer, Odometer, Voltmeter, Oil Pressure, Engine Coolant Temp, Tachometer, Oil Temperature and Trip Odometer
- Illuminated Locking Glove Box
- Interior Trim -inc: Aluminum Instrument Panel Insert, Aluminum Door Panel Insert, Leather/Aluminum Console Insert, Aluminum Interior Accents and Leather Upholstered Dashboard
- Leather Door Trim Insert- Leather Seat Trim- Manual Tilt/Telescoping Steering Column
- Outside Temp Gauge- Perimeter Alarm
- Power 1st Row Windows w/Driver And Passenger 1-Touch Down and w/Driver 1-Touch Up
- Power Door Locks w/Autolock Feature- Power Fuel Flap Locking Type
- Redundant Digital Speedometer
- Remote Keyless Entry w/Integrated Key Transmitter and Illuminated Entry
- Remote Releases -Inc: Power Cargo Access and Power Fuel- Sport Bucket Seats
- Sport Leather Steering Wheel- Systems Monitor- Valet Function

Exterior

- Aluminum Panels- Black Grille- Black Side Windows Trim- Body-Colored Door Handles
- Body-Colored Front Bumper- Body-Colored Power Heated Side Mirrors w/Power Folding
- Body-Colored Rear Bumper w/Black Bumper Insert- Clearcoat Paint

- Fully Automatic Projector Beam High Intensity Low/High Beam Daytime Running Auto-Leveling Headlamps w/Washer and Delay-Off
- LED Brakelights- Light Tinted Glass- Lip Spoiler- Perimeter/Approach Lights
- Power Convertible Retractable Hard Top w/Lining, Glass Rear Window, Fixed Roll-Over Protection and Power Wind Blocker
- Power Rear Window w/Defroster- Rain Detecting Variable Intermittent Wipers
- Rear Fog Lamps- Rocker Panel Extensions
- Tires: P235/35ZR20 Front & P295/40ZR20 Rear -inc: Pirelli P-Zero
- Trunk Rear Cargo Access- Wheels: 20" Painted Alloy

Safety

- 1 12V DC Power Outlet- 4-Way Driver Seat -inc: Manual Recline and Fore/Aft Movement
- 4-Way Passenger Seat -inc: Manual Recline and Fore/Aft Movement - Air Filtration
- Analog Display- Bucket Front Seats- Cargo Space Lights- Carpet Floor Trim
- Day-Night Rearview Mirror- Driver And Passenger Door Bins- Driver Foot Rest
- Dual Zone Front Automatic Air Conditioning- Engine Immobilizer
- FOB Controls -inc: Trunk/Hatch/Tailgate- Fade-To-Off Interior Lighting
- Fixed Front Head Restraints- Front Cupholder- Front Map Lights
- Full Carpet Floor Covering -inc: Carpet Front Floor Mats - Full Cloth Headliner
- Full Floor Console w/Storage and 1 12V DC Power Outlet
- Gauges -inc: Speedometer, Odometer, Voltmeter, Oil Pressure, Engine Coolant Temp, Tachometer, Oil Temperature and Trip Odometer
- Illuminated Locking Glove Box
- Interior Trim -inc: Aluminum Instrument Panel Insert, Aluminum Door Panel Insert, Leather/Aluminum Console Insert, Aluminum Interior Accents and Leather Upholstered Dashboard
- Leather Door Trim Insert- Leather Seat Trim- Manual Tilt/Telescoping Steering Column
- Outside Temp Gauge- Perimeter Alarm
- Power 1st Row Windows w/Driver And Passenger 1-Touch Down and w/Driver 1-Touch Up
- Power Door Locks w/Autolock Feature- Power Fuel Flap Locking Type
- Redundant Digital Speedometer
- Remote Keyless Entry w/Integrated Key Transmitter and Illuminated Entry
- Remote Releases -Inc: Power Cargo Access and Power Fuel- Sport Bucket Seats
- Sport Leather Steering Wheel- Systems Monitor- Valet Function

Mechanical

- 165 Amp Alternator- 22.7 Gal. Fuel Tank
- 4-Wheel Disc Brakes w/4-Wheel ABS, Front And Rear Vented Discs, Hill Hold Control, Ceramic Discs and Electric Parking Brake
- 5.14 Axle Ratio- 65-Amp/Hr 760CCA Maintenance-Free Battery w/Run Down Protection
- Double Wishbone Front Suspension w/Coil Springs
- Driver Control Ride Control Adaptive Suspension
- Dual Stainless Steel Exhaust w/Polished Tailpipe Finisher
- Electro-Hydraulic Power Assist Speed-Sensing Steering
- Electro-Mechanical Limited Slip Differential- Engine: 4.5L DOHC V8 w/Direct Injection
- Front And Rear Anti-Roll Bars- Magnetic Fluid-Filled Shock Absorbers
- Multi-Link Rear Suspension w/Coil Springs- Rear-Wheel Drive
- Transmission w/Driver Selectable Mode, F1-Superfast Sequential Shift Control w/Steering Wheel Controls and Oil Cooler
- Transmission: 7-Speed Dual Clutch Automated Manual -inc: F1-style paddle shift

Option Packages

Factory Installed Packages

AFS ADVANCED FRONTLIGHTING SYSTEM HEADLIGHTS

- inc: adaptive headlights that pivot in response to speed and turning angle to create a wider illumination in curves. The system deactivates when overtaking and parking and to avoid a shadow zone in the car's trajectory, the horizontal adjustment of each headlight is limited to between 7.5 degrees to the inside of the car and 15 degrees to the outside of the car

\$1,984

BRAKE CALIPERS IN YELLOW COLOR

\$1,432

-	
COLOR UPON REQUEST FOR SPECIAL STITCHING	
-inc: The seams have thicker thread and a shorter sewing step, making them more visible	\$482
-	
ELECTRIC SEATS	
	\$3,709
-	
ELECTRIC STEERING COLUMN	
	\$837
-	
FRONT & REAR PARKING SENSORS	
	\$2,316
-	
FRONT PARKING LIFTER	
-inc: The system raises the front suspension by up to 1.58 inches (40 mm) to allow the vehicle to clear speed bumps and ramps	\$4,631
-	
HIGH-POWER PREMIUM HI-FI SYSTEM	
-inc: 1000Watt JBL sound system and two subwoofers	\$5,457
-	
INTERIOR & EXTERIOR ELECTROCHROMATIC MIRRORS W/HOMELINK SYSTEM	
-inc: The central unit is placed in the inner mirror bezel and the action buttons are on the dome lamp	\$1,653
-	
IPOD INSTALLATION	
-inc: Connector plug is located inside the glove compartment	\$925
-	
LEATHER & ALCANTARA TWO-COLOR INTERIOR	
	\$5,225
-	
REVERSE CAMERA SYSTEM	
	\$3,639
-	
SATELLITE NAVIGATION SYSTEM	
-inc: Information will be displayed on the TFT screen in the instrument panel to the right of the tachometer	\$3,474
-	
SCUDERIA FERRARI SHIELDS ON FENDERS	
	\$1,652
-	
SPORT EXHAUST PIPES	
	\$722
-	
WHEELS: 20" SPORTS PAINTED ALLOY	
	\$5,901
-	
ARGENTO NURBURGRING METALLIC	

-
BEIGE, LEATHER SEAT TRIM

-
Option Packages Total
\$44,039

All vehicles are pre-owned. The e-Price is a cash price and excludes tax, title, license and \$50.00 doc fee. Prices subject to change. Contact our Sales Team for detailed information.

Texas Vehicle Exchange

tveauto.com

972-242-5350

1724 Luna Road

Carrollton, TX 75006

© 2019 AutoRevo - All rights reserved. - Powered by AutoRevo