

2002 Jeep Wrangler X

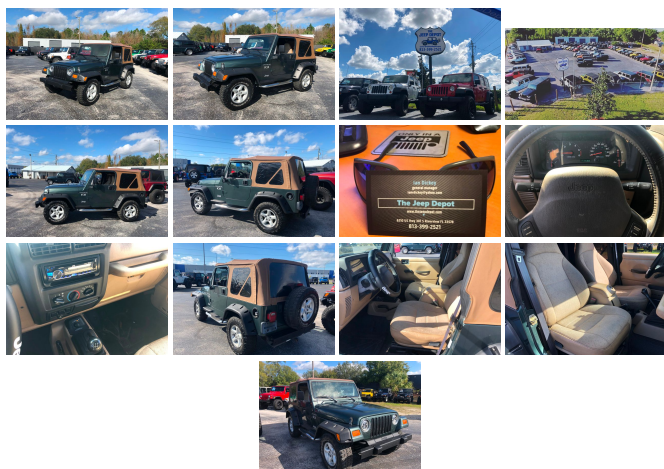
View this car on our website at thejeepdepot.com/6563364/ebrochure



Our Price **\$10,875**

Specifications:

Year:	2002
VIN:	1J4FA39S12P707738
Make:	Jeep
Model/Trim:	Wrangler X
Condition:	Pre-Owned
Body:	SUV
Exterior:	Green
Engine:	4.0L (242) SMFI I6 "POWER TECH" ENGINE
Interior:	Tan
Transmission:	HD 5-SPEED MANUAL TRANSMISSION W/OD
Mileage:	153,688
Drivetrain:	4 Wheel Drive
Economy:	City 15 / Highway 18



2002 Jeep Wrangler X

The Jeep Depot - (813) 399-2521 - View this car on our website at thejeepdepot.com/6563364/ebrochure

Our Location :



2002 Jeep Wrangler X

The Jeep Depot - (813) 399-2521 - View this car on our website at thejeepdepot.com/6563364/ebrochure

Installed Options

Interior

- Cargo tie down loops- Cigar lighter- Cloth high-back reclining front bucket seats
- Electronic AM/FM stereo radio w/cassette-inc: digital clock, fixed antenna, (2) front speakers, rear overhead sound bar w/(2) speakers
- Floor console w/cup holder- Fold & tumble rear seat- Front seat area carpeting
- Glove box w/lock- Rear seat/cargo area carpeting- Sport bar w/full padding
- Tip & slide passenger seat

Exterior

- Black bumpers- Body-color grille- Fold away exterior mirrors
- Folding soft top w/soft windows- Variable intermittent windshield wipers

Safety

- Cargo tie down loops- Cigar lighter- Cloth high-back reclining front bucket seats
- Electronic AM/FM stereo radio w/cassette-inc: digital clock, fixed antenna, (2) front speakers, rear overhead sound bar w/(2) speakers
- Floor console w/cup holder- Fold & tumble rear seat- Front seat area carpeting
- Glove box w/lock- Rear seat/cargo area carpeting- Sport bar w/full padding
- Tip & slide passenger seat

Mechanical

- (4) 15" x 7" full-face steel wheels - 117-amp alternator- 19 gallon fuel tank
- 3.07 axle ratio- 4.0L (242) SMFI I6 "Power Tech" engine
- 600-CCA maintenance free battery- Command-Trac part-time 4WD
- Dana 30/186MM front axle- Dana M35/194MM rear axle- Front/rear stabilizer bars
- HD 5-speed manual transmission w/OD- Low pressure gas-charged shock absorbers
- P215/75R15 all-terrain SBR RBL "Wrangler" tires- Pwr front disc/rear drum brakes
- Pwr recirculating ball steering

- Quadra-link suspension w/live solid axles, locating arms & coil springs
- Restricted use spare tire w/outside carrier- Skid plates-inc: transfer case, fuel tank
- Tethered gas cap

Option Packages

Factory Installed Packages

4.0L (242) SMFI I6 "POWER TECH" ENGINE

HD 5-SPEED MANUAL TRANSMISSION W/OD

FULL METAL DOORS W/ROLL-UP WINDOWS \$125

SPEED CONTROL \$300

STEERING GROUP \$190
-inc: tilt steering column, leather wrapped steering wheel

TOW HOOKS \$60
-inc: (2) front & (1) rear

AIR CONDITIONING 3.07 AXLE RATIO \$895

SOFT TOP

CLOTH HIGH-BACK RECLINING FRONT BUCKET SEATS W/REAR SEAT

Option Packages Total \$1,570

The APR and default terms may not apply to all vehicles, to all sales or to all customers. The bank and lenders may or may not offer loans and financing based on each customers credit worthiness. This may or may not be out of the dealerships control.

The Jeep Depot
thejeepdepot.com
 (813) 399-2521

6210 U.S. Hwy 301 South
 Riverview, FL 33578

© 2019 AutoRevo - All rights reserved. - Powered by AutoRevo