



## 2017 GMC Sierra 1500 elevation

**Our Price \$27,900**

View this vehicle on our website at [onlinejj.com](http://onlinejj.com)



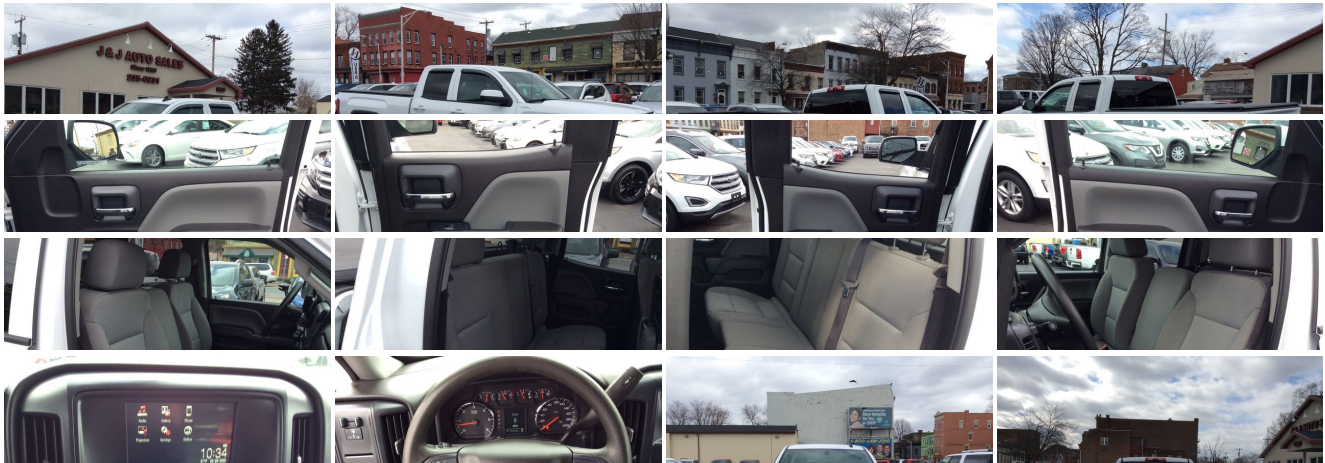
(518) 235-6931

629 2nd Ave , Troy, NY 12182

Photos

Details

Contact





## Specifications:

<b>Year:</b>	2017
<b>VIN:</b>	<a href="#">1GTV2LEC9HZ151429</a>
<b>Make:</b>	GMC
<b>Stock:</b>	151429
<b>Model/Trim:</b>	Sierra 1500 elevation
<b>Condition:</b>	Pre-Owned
<b>Body:</b>	Pickup Truck
<b>Exterior:</b>	Summit White
<b>Engine:</b>	ENGINE, 5.3L ECOTEC3 V8, WITH ACTIVE FUEL MANAGEMENT, DIRECT INJECTION
<b>Interior:</b>	Dark Ash seats with Jet Black interior accents Cloth
<b>Mileage:</b>	41,475
<b>Drivetrain:</b>	4 Wheel Drive
<b>Economy:</b>	City 16 / Highway 22

## Vehicle Description

New arrival GMC Sierra Elevation 5.3L V8 4WD - Clean Carfax with On-Star, Bluetooth, Rear View Camera, Spray-On Bedliner, Chrome Running Boards, Factory Tow Package and Much More!!! Serviced, inspected, and warranted by J & J AUTO SALES. A family owned and operated business for over 60 years! 6 month or 6,000 mile powertrain warranty comes with every vehicle. Financing and extended warranties are available. Give us a call at 518-235-6931 to schedule a test drive or stop by and visit us at 629 2nd Ave, Troy, NY 12182.

### Installed Options

#### Interior

- Air conditioning, single-zone- Assist handle, front passenger on A-pillar
- Cruise control, steering wheel-mounted- Door locks, power
- Driver Information Center, 3.5-inch diagonal monochromatic display provides warning messages and basic vehicle information
- Floor covering, Graphite-colored rubberized-vinyl
- Instrumentation, 6-gauge cluster featuring speedometer, fuel level, engine temperature, tachometer, voltage and oil pressure
- OnStar Delete
- Seat, rear full-width folding bench, 3-passenger (includes child seat top tether anchor) (Requires a Double Cab model.)
- Seats, front 40/20/40 split-bench 3-passenger, driver and front passenger recline with outboard head restraints and center fold-down armrest with storage. Vinyl has fixed lumbar and cloth has manually adjustable driver lumbar.
- Steering column, manual Tilt-Wheel
- Windows, power with driver express up and down and express down on all other windows (Standard on Crew Cab and Double Cab models. On Regular Cab included and only available with (PDD) Sierra Convenience Package.) (Standard on Crew Cab and Double Cab. On Regular Cab. Included and only available with (PCR) Sierra Fleet Convenience Package.)

#### Exterior

- Tire, spare P255/70R17 all-season, blackwall (Included and only available with (RBZ) P255/70R17 all-season, blackwall tires.)
- Tires, P255/70R17 all-season, blackwall
- Wheels, 17" x 8" (43.2 cm x 20.3 cm) painted steel
- 4X4 chrome badge (Included and only available with 4X4 models.)
- Active aero shutters, front- Bumper, front chrome lower
- Bumper, rear chrome with rear bumper corner steps - CornerStep, rear bumper
- Door handles, Black- Glass, solar absorbing, tinted
- Grille surround, chrome (Not included when (SXL) Elevation Edition is ordered.)
- Headlamps, high intensity discharge (HID) projector-beam with LED signature
- Lamps, cargo area, cab mounted with switch on center switch bank

### Option Packages

#### Factory Installed Packages

---

**ENGINE, 5.3L ECOTEC3 V8, WITH ACTIVE FUEL MANAGEMENT, DIRECT INJECTION**  
and Variable Valve Timing, includes aluminum block construction (355 hp [265 kW] @ 5600 rpm, 383 lb-ft of torque [518 Nm] @ 4100 rpm; more than 300 lb-ft of torque from 2000 to 5600 rpm)

**\$1,195**

---

**BED LINER, SPRAY-ON**  
Pickup box bed liner consisting of high pressure, chemically bonded, sprayed-on polyurea & polyurethane liner formulation. Liner is permanently bonded to the truck bed providing a water tight seal. Includes embossed Denali logo on front bed wall. The textured, non-skid surface is black in color and robotically applied. Spray-on liner covers entire bed interior surface below side rails, including tailgate, front box top rail, gage hole plugs and lower tie down loops.

**\$495**

---

**BLUETOOTH FOR PHONE**

---

**BUMPER, FRONT, BODY-COLOR LOWER**

---

**BUMPER, REAR BODY-COLOR**  
with corner steps

---

**DECAL AND NAME PLATE DELETE, TAILGATE**

---

**DOOR HANDLES, BODY-COLOR**

- Lamps, cargo area, cab mounted with switch on center switch bank
- Mirrors, outside manual, Black- Tailgate and bed rail protection caps, top
- Tailgate, locking utilizes same key as ignition and door
- Tire carrier lock keyed cylinder lock that utilizes same key as ignition and door

## Safety

- Air conditioning, single-zone- Assist handle, front passenger on A-pillar
- Cruise control, steering wheel-mounted- Door locks, power
- Driver Information Center, 3.5-inch diagonal monochromatic display provides warning messages and basic vehicle information
- Floor covering, Graphite-colored rubberized-vinyl
- Instrumentation, 6-gauge cluster featuring speedometer, fuel level, engine temperature, tachometer, voltage and oil pressure
- OnStar Delete
- Seat, rear full-width folding bench, 3-passenger (includes child seat top tether anchor) (Requires a Double Cab model.)
- Seats, front 40/20/40 split-bench 3-passenger, driver and front passenger recline with outboard head restraints and center fold-down armrest with storage. Vinyl has fixed lumbar and cloth has manually adjustable driver lumbar.
- Steering column, manual Tilt-Wheel
- Windows, power with driver express up and down and express down on all other windows (Standard on Crew Cab and Double Cab models. On Regular Cab included and only available with (PDD) Sierra Convenience Package.) (Standard on Crew Cab and Double Cab. On Regular Cab. Included and only available with (PCR) Sierra Fleet Convenience Package.)

## Mechanical

- Engine, 4.3L EcoTec3 V6 with Active Fuel Management Direct Injection and Variable Valve Timing, includes aluminum block construction with FlexFuel capability, capable of running on unleaded or up to 85% ethanol (285 hp [212 kW] @ 5300 rpm, 305 lb-ft of torque [413 Nm] @ 3900 rpm) (Includes (FHS) E85 FlexFuel capability. Not available on T\*15743 models.)
- Transmission, 6-speed automatic, electronically controlled with overdrive and tow/haul mode. Includes Cruise Grade Braking and Powertrain Grade Braking
- Alternator, 150 amps
- Battery, heavy-duty 730 cold-cranking amps/70 Amp-hr, maintenance-free with rundown protection and retained accessory power
- Brakes, 4-wheel disc with DURALIFE rotors, 4-wheel antilock- Capless Fuel Fill
- Cargo tie downs (4), movable upper- Cooling, external engine oil cooler
- Exhaust, aluminized stainless-steel muffler and tailpipe- Four wheel drive
- Frame, fully-boxed, hydroformed front section
- GVWR, 7100 lbs. (3221 kg) (Requires a Crew Cab or Double Cab 4WD model and (LV3) 4.3L EcoTec3 V6 engine.)
- Pickup box (Deleted when (ZW9) pickup box delete is ordered on Regular Cab models.)
- Rear axle, 3.42 ratio (Standard on 4WD V6 models. Available with (L83) 5.3L EcoTec3 V8 engine.)
- Recovery hooks, front, frame-mounted, black (Included with (SXL) Elevation Edition on 2WD models. Standard with 4WD models. Included with (9G3) Suspension Package, off-road, for base decor vehicles with 4WD models) (Included with 4WD models or (SXL) Elevation Edition on 2WD models.)
- Steering, Electric Power Steering (EPS) assist, rack-and-pinion- Suspension Package
- Transfer case, with floor-mounted shifter (Included with 4WD models only.)

## ELEVATION EDITION

includes (NZQ) 20" x 9" Black-painted aluminum wheels, (QT0) P275/55R20 all-season, blackwall tires, (DL8) outside heated power-adjustable mirrors, (DP6) body colored mirror caps, (TRB) body color accented grille surround, (AQQ) Remote Keyless Entry, (A91) remote locking tailgate, (AKO) deep tinted glass, (B86) bodyside, body color moldings, (K14) 110-volt AC power outlet, (IOB) 7" diagonal monochromatic display radio with IntelliLink, (UE1) OnStar, (VV4) OnStar 4G LTE Wi-Fi Hotspot, (B30) carpeted floor, (VB5) front body-color bumper, (VT5) rear body-color bumper with corner steps, (D75) body colored door handles, (T3U) LED front fog lamps and (V76) Black recovery hooks on 2WD model.

**\$2,950**

## FOG LAMPS, THIN PROFILE LED

## LABEL, FASTEN SAFETY BELTS

"Fasten Safety Belts" reminder label on right hand and left hand front side door glass

**\$4**

## LED LIGHTING, CARGO BOX

with switch on center switch bank

**\$60**

## LICENSE PLATE KIT, FRONT

## LPO, WHEEL LOCKS, SET OF 4

**\$60**

## MIRROR CAPS, BODY-COLOR

## MIRROR, INSIDE REARVIEW AUTO-DIMMING

## MOLDINGS, BODYSIDE, BODY COLOR

## POWER OUTLET, 110-VOLT AC

**\$150**

## REAR VISION CAMERA

**\$200**

## REMOTE KEYLESS ENTRY

Includes (A91) remote locking tailgate.)

## TRAILER BRAKE CONTROLLER, INTEGRATED

**\$275**

## TRAILERING EQUIPMENT

**\$790**

## GVWR, 7200 LBS. (3266 KG)

## SUMMIT WHITE

## AUDIO SYSTEM, 4.2" DIAGONAL COLOR DISPLAY, AM/FM STEREO

with USB port and auxiliary jack

## DARK ASH SEATS WITH JET BLACK INTERIOR ACCENTS, CLOTH SEAT TRIM

## SEATS, FRONT 40/20/40 SPLIT-BENCH, 3-PASSENGER.

Includes driver and front passenger recline with outboard head restraints and center fold-down armrest with storage. Includes manually adjustable driver lumbar. lockable storage

**\$435**

adjustable center console, removable storage compartment in seat cushion, and storage pockets

TIRES, P275/55R20 ALL-SEASON, BLACKWALL.

WHEELS, 20" X 9" (50.8 CM X 22.9 CM) BLACK-PAINTED ALUMINUM

Option Packages Total \$6,614



J & J Auto Sales

View this car on our website at [onlinejj.com/6563036](https://onlinejj.com/6563036)

Website: [onlinejj.com](https://onlinejj.com)

Phone: (518) 235-6931

Map: 629 2nd Ave, Troy, NY 12182

