

2013 Ford F-150 SVT Raptor HENNESSEY VELOCIRAPTOR 600,BUMPERS,62K

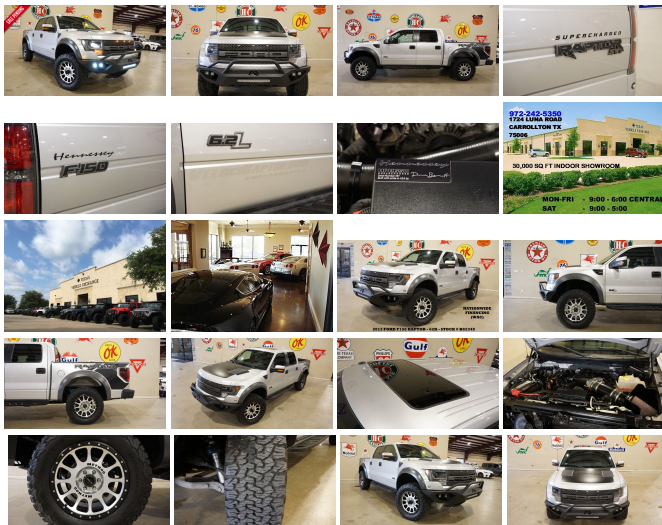
View this car on our website at tveauto.com/6562453/ebrochure



Our Price **\$42,900**

Specifications:

Year:	2013
VIN:	1FTFW1R65DFB82349
Make:	Ford
Stock:	B82349
Model/Trim:	F-150 SVT Raptor HENNESSEY VELOCIRAPTOR 600,BUMPERS,62K
Condition:	Pre-Owned
Body:	Pickup Truck
Exterior:	Ingot Silver Metallic
Engine:	6.2L EFI V8 ENGINE
Interior:	Black Leather
Transmission:	6-SPEED ELECTRONIC AUTOMATIC TRANSMISSION W/OD & TOW/HAUL MODE
Mileage:	62,453
Drivetrain:	4 Wheel Drive
Economy:	City 11 / Highway 16



NATION WIDE FINANCING

SUBMIT CREDIT APP WWW.TVEAUTO.COM

OR CALL 972-242-5350

2013 FORD F150 SUPER CREW SVT
RAPTOR 4X4 HENNESSEY VELOCIRAPTOR
600 #397, 6.2L V8 ENGINE, AUTOMATIC
TRANSMISSION, ONLY 62K, INGOT SILVER
METALLIC W/BLACK LEATHER INTERIOR,
CARFAX REPORTS 1 OWNER, APPEARS TO
BE A NON-SMOKER, REMOTE START, FAB
FOURS VENGEANCE FRONT BUMPER WITH
20" RIGID INDUSTRIES LED LIGHT BAR & 4
RIGID INDUSTRIES DUALY D2 LED LIGHTS,
SUNROOF TOUCH SCREEN NAVIGATION

CONTROL, TOUCH SCREEN NAVIGATION, FRONT VIEW CAMERA, BACK-UP CAMERA, BLACK ALUMINUM RUNNING BOARDS, POWER WINDOWS, POWER DOOR LOCKS, POWER FOLDING MIRRORS WITH TURN SIGNALS, POWER TILT/TELESCOPE STEERING WHEEL WITH AUDIO & CRUISE CONTROLS, DUAL POWER HEATED & COOLED FRONT SEATS WITH DRIVER 2 MEMORY POSITION, POWER ADJUSTABLE PEDALS, TRACTION CONTROL, HILL DESCENT CONTROL, OFF ROAD MODE BUTTON, TRAILER BRAKE CONTROLLER, UPFITTER SWITCHES, ICE COLD A/C, DUAL CLIMATE CONTROL, SONY HD AM/FM/SIRIUS STEREO WITH CD PLAYER, MICROSOFT SYNC VOICE ACTIVATED SYSTEM, SELF DIMMING REAR VIEW MIRROR, HOMELINK GARAGE CONTROLS, DUAL LIGHTED VANITY MIRRORS, REAR A/C VENTS, POWER SLIDING REAR WINDOW, SPRAY IN BEDLINER, TAILGATE STEP, FAB FOURS VENGEANCE REAR BUMPER WITH 2 RIGID INDUSTRIES DUALLY D2 LED LIGHTS, REAR PARK DISTANCE SENSORS, TOW PACKAGE WITH RECEIVER HITCH, RUBBER FLOOR MATS, OWNER'S MANUAL, 2 KEYS/2 REMOTES. 20 IN SILVER METHOD WHEELS, FRONT TIRES ARE BFGOODRICH 35X12.50R/20 WITH APPROX 75% TREAD LIFE REMAINING, REAR TIRES ARE BFGOODRICH 35X12.50R/20 WITH APPROX 75% TREAD LIFE REMAINING. RUNS AND DRIVES GREAT. GIVE US A CALL @ 972-242-5350 OR STOP BY FOR A TEST DRIVE. 1724 LUNA RD IN CARROLLTON - 2 MILES NORTH OF 635. CLICK ON CARFAX ICON TO VIEW A FULL REPORT AT NO COST TO YOU.

Our Location :



2013 Ford F-150 SVT Raptor HENNESSEY VELOCIRAPTOR 600,BUMPERS,62K
Texas Vehicle Exchange - 972-242-5350 - View this car on our website at veauto.com/6562453/ebrochure

Installed Options

Interior

- 2nd row B-pillar grab handles
- Color-coordinated carpet -inc: unique front/rear rubber floor mats w/SVT logo on front mats
- Console top switches -inc: hill decent, easy off-road mode, aux switch pack
- Cruise control- Driver side SecuriCode keyless entry keypad
- Front flow-through console w/floor shifter- Front passenger side A-pillar grab handle
- Front pwr point
- Gauges -inc: fuel gauge, voltmeter, oil pressure, engine coolant temp, speedometer, tachometer, odometer
- Illuminated entry- Manual air conditioning
- MyFord -inc: 5-way steering wheel control switch, 4.2" LCD audio/climate control screen in center stack, 4.2" LCD productivity screen message center w/trip computer
- Perimeter alarm- Pwr 1st & 2nd row windows- Pwr door locks w/autolock feature
- Rear pwr point- Rear window defroster- Remote keyless entry key
- SecuriLock passive anti-theft system (PATS)- Tilt steering column
- Unique 60/40 flip-up rear split bench seat
- Unique IP center stack & door trim applique finish
- Unique leather-wrapped steering wheel w/thumb pads
- Unique leather/cloth bucket seats w/6-way pwr driver seat, seat back bolsters

Exterior

- (4) full-size doors- 17" cast aluminum wheels w/painted & machined finish
- Body-color front bumper fascia- Brick wall front grille- Cast aluminum running boards
- Flared front fenders w/air extractors- Full size spare tire
- Headlamps & tail lamps w/black surround- Hood w/air extractors- Integrated marker lights
- LT315/70R17 all-terrain BSW tires- Pwr side mirrors w/body-color skull caps
- Pwr sliding rear window- Rear privacy tint glass
- Removable tailgate w/key lock & lift assist
- Under frame winch-type spare tire carrier w/safety catch & lock

- Unique front/rear bumper w/painted foundry finish- Unique front/rear wheel lip moldings
- Variable interval wipers

Safety

- 2nd row B-pillar grab handles
- Color-coordinated carpet -inc: unique front/rear rubber floor mats w/SVT logo on front mats
- Console top switches -inc: hill decent, easy off-road mode, aux switch pack
- Cruise control- Driver side SecuriCode keyless entry keypad
- Front flow-through console w/floor shifter- Front passenger side A-pillar grab handle
- Front pwr point
- Gauges -inc: fuel gauge, voltmeter, oil pressure, engine coolant temp, speedometer, tachometer, odometer
- Illuminated entry- Manual air conditioning
- MyFord -inc: 5-way steering wheel control switch, 4.2" LCD audio/climate control screen in center stack, 4.2" LCD productivity screen message center w/trip computer
- Perimeter alarm- Pwr 1st & 2nd row windows- Pwr door locks w/autolock feature
- Rear pwr point- Rear window defroster- Remote keyless entry key
- SecuriLock passive anti-theft system (PATS)- Tilt steering column
- Unique 60/40 flip-up rear split bench seat
- Unique IP center stack & door trim applique finish
- Unique leather-wrapped steering wheel w/thumb pads
- Unique leather/cloth bucket seats w/6-way pwr driver seat, seat back bolsters

Mechanical

- 2-ton jack- 4-wheel drive -inc: electronic-shift-on-the fly transfer case (ESOF)
- 4.10 front axle ratio w/Torsen differential/4.10 electronic-locking rear axle ratio
- 5.5' pickup box- 6-speed electronic automatic transmission w/OD & tow/haul mode
- 6.2L EFI V8 engine- 7450# GVWR, 1180# maximum payload
- 78-amp/hr (750CCA) maintenance-free battery- Flared pickup box outers
- Front/rear high performance off-road/fox racing shock absorbers- Front/rear tow hooks
- HD front/engine skid plates- Hill decent/off-road mode
- Long travel suspension w/unique front upper/lower control arms
- Pwr front/rear disc brakes- Pwr rack & pinion steering- Steering rack travel/boost curve
- Trailer sway control
- Trailer tow pkg -inc: class IV trailer hitch receiver, 7-pin wiring harness, upgraded radiator, aux trans oil cooler, SelectShift auto trans
- Unique dual outlet muffler- Unique tie rods

Option Packages

Factory Installed Packages

6.2L EFI V8 ENGINE

6-SPEED ELECTRONIC AUTOMATIC TRANSMISSION W/OD & TOW/HAUL MODE

EXTERIOR GRAPHICS PKG
\$1,075

FRONT/REAR VIEW CAMERA
\$525

HOOD GRAPHICS PKG
\$900

PWR MOONROOF TAILGATE STEP
\$995 \$375

LUXURY EQUIPMENT GROUP

-inc: heated/cooled 10-way pwr
40/console/40 front seats
w/driver seat memory, dual-
zone electronic auto temp
control, HID headlamps, pwr
adjustable pedals w/memory,
voice-activated navigation
system w/in-dash screen & SD
card for map/POI storage,
integrated SiriusXM Travel Link
w/6-month subscription, pwr
tilt/telescopic steering column,
pwr-folding heated exterior
mirrors w/integrated turn
signals & body-color skull
caps, driver side auto-dimming
exterior mirror, mirror memory,
rearview camera, remote start,
Sony AM/FM stereo w/CD
player, HD Radio, media hub
w/(2) USB ports, audio/video
input jacks, SD card reader,
SYNC services 3-year prepaid
subscription w/GPS based
turn-by-turn driving directions
& traffic reports & info services,
MyFord Touch w/5-way
steering wheel control switch,
8" LCD touch screen in center
stack, trailer brake controller,
universal garage door opener

\$4,760

Option Packages Total

\$8,630

All vehicles are pre-owned. The e-Price is a cash price and excludes tax, title, license and \$50.00 doc fee. Prices subject to change. Contact our Sales Team for detailed information.

Texas Vehicle Exchange

tveauto.com

972-242-5350

1724 Luna Road

Carrollton, TX 75006

© 2019 AutoRevo - All rights reserved. - Powered by AutoRevo