

## 2015 Nissan Sentra S

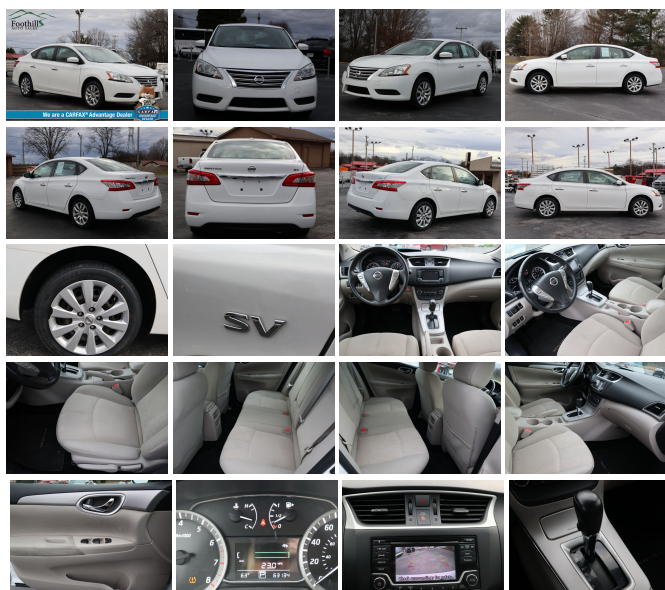
View this car on our website at [foothillsautosalestn.com/6560220/ebrochure](http://foothillsautosalestn.com/6560220/ebrochure)



Our Price **\$10,990**

### Specifications:


|                    |                                       |
|--------------------|---------------------------------------|
| <b>Year:</b>       | 2015                                  |
| <b>VIN:</b>        | 3N1AB7AP3FY285801                     |
| <b>Make:</b>       | Nissan                                |
| <b>Model/Trim:</b> | Sentra S                              |
| <b>Condition:</b>  | Pre-Owned                             |
| <b>Body:</b>       | Sedan                                 |
| <b>Exterior:</b>   | Fresh Powder                          |
| <b>Engine:</b>     | Engine: 1.8L DOHC 16-Valve 4-Cylinder |
| <b>Interior:</b>   | Tan Cloth                             |
| <b>Mileage:</b>    | 62,858                                |
| <b>Drivetrain:</b> | Front Wheel Drive                     |






2015 Nissan Sentra S


Foothills Auto Sales - 865-980-8500 - View this car on our website at [foothillsautosalestn.com/6560220/ebrochure](http://foothillsautosalestn.com/6560220/ebrochure)

## Vehicle History Report : as Of 01/23/2019

 Snapshot

2015 NISSAN SENTRA S/SV/SR/SL

|   |                                       |
|---|---------------------------------------|
|  | No accidents reported to CARFAX       |
|  | Damage reported                       |
|  | 2 Previous owners                     |
|  | 3 Service history records             |
|  | Types of owners: Rental, Personal     |
|  | 62,818 Last reported odometer reading |



**FREE CARFAX Report**

See the full CARFAX Report for additional information

\*carfax Snapshot is a reflection of available information on the date the report was pulled. carfax is constantly being updated with new information and is subject to change at any time.

## Our Location :



2015 Nissan Sentra S

Foothills Auto Sales - 865-980-8500 - View this car on our website at [foothillsautosalestn.com/6560220/ebrochure](http://foothillsautosalestn.com/6560220/ebrochure)

## Installed Options

### Interior

- 1 Seatback Storage Pocket- 2 12V DC Power Outlets
- 4-Way Passenger Seat -inc: Manual Recline and Fore/Aft Movement
- 60-40 Folding Bench Front Facing Fold Forward Seatback Rear Seat - Air Filtration
- Analog Display- Cargo Space Lights
- Carpet Floor Trim and Carpet Trunk Lid/Rear Cargo Door Trim - Cloth Door Trim Insert
- Cloth Seat Trim- Cruise Control w/Steering Wheel Controls- Day-Night Rearview Mirror
- Delayed Accessory Power
- Driver And Passenger Visor Vanity Mirrors w/Driver And Passenger Auxiliary Mirror
- Driver Foot Rest- Driver Seat- Engine Immobilizer
- FOB Controls -inc: Trunk/Hatch/Tailgate- Fade-To-Off Interior Lighting
- Front Bucket Seats -inc: 6-way adjustable driver's seat
- Front Center Armrest and Rear Center Armrest- Front Cupholder- Front Map Lights
- Full Carpet Floor Covering- Full Cloth Headliner
- Full Floor Console w/Covered Storage, Mini Overhead Console w/Storage and 2 12V DC Power Outlets
- Gauges -inc: Speedometer, Odometer, Engine Coolant Temp, Tachometer, Trip Odometer and Trip Computer
- Illuminated Glove Box
- Instrument Panel Covered Bin, Driver / Passenger And Rear Door Bins
- Interior Trim -inc: Metal-Look Instrument Panel Insert, Metal-Look Door Panel Insert, Metal-Look Console Insert and Chrome/Metal-Look Interior Accents
- Manual Adjustable Front Head Restraints and Fixed Rear Head Restraints
- Manual Air Conditioning- Manual Tilt/Telescoping Steering Column
- Outside Temp Gauge- Power 1st Row Windows w/Driver 1-Touch Up/Down
- Power Door Locks w/Autolock Feature- Power Rear Windows- Rear Cupholder
- Remote Keyless Entry w/Integrated Key Transmitter, Illuminated Entry and Panic Button
- Remote Releases -Inc: Power Cargo Access and Mechanical Fuel
- Seats w/Cloth Back Material- Trip Computer- Urethane Gear Shift Knob

## Exterior

- Body-Colored Front Bumper- Body-Colored Power Side Mirrors w/Manual Folding
- Body-Colored Rear Bumper- Chrome Door Handles
- Chrome Side Windows Trim and Black Front Windshield Trim - Clearcoat Paint
- Compact Spare Tire Mounted Inside Under Cargo- Fixed Rear Window w/Defroster
- Fully Automatic Aero-Composite Halogen Headlamps w/Delay-Off
- Fully Galvanized Steel Panels- LED Brakelights- Light Tinted Glass
- Metal-Look Grille w/Chrome Surround- Steel Spare Wheel- Tires: P205/55HR16 AS
- Trunk Rear Cargo Access- Variable Intermittent Wipers
- Wheels: 16" Steel w/Full Wheel Covers

## Safety

- 1 Seatback Storage Pocket- 2 12V DC Power Outlets
- 4-Way Passenger Seat -inc: Manual Recline and Fore/Aft Movement
- 60-40 Folding Bench Front Facing Fold Forward Seatback Rear Seat - Air Filtration
- Analog Display- Cargo Space Lights
- Carpet Floor Trim and Carpet Trunk Lid/Rear Cargo Door Trim - Cloth Door Trim Insert
- Cloth Seat Trim- Cruise Control w/Steering Wheel Controls- Day-Night Rearview Mirror
- Delayed Accessory Power
- Driver And Passenger Visor Vanity Mirrors w/Driver And Passenger Auxiliary Mirror
- Driver Foot Rest- Driver Seat- Engine Immobilizer
- FOB Controls -inc: Trunk/Hatch/Tailgate- Fade-To-Off Interior Lighting
- Front Bucket Seats -inc: 6-way adjustable driver's seat
- Front Center Armrest and Rear Center Armrest- Front Cupholder- Front Map Lights
- Full Carpet Floor Covering- Full Cloth Headliner
- Full Floor Console w/Covered Storage, Mini Overhead Console w/Storage and 2 12V DC Power Outlets
- Gauges -inc: Speedometer, Odometer, Engine Coolant Temp, Tachometer, Trip Odometer and Trip Computer
- Illuminated Glove Box
- Instrument Panel Covered Bin, Driver / Passenger And Rear Door Bins
- Interior Trim -inc: Metal-Look Instrument Panel Insert, Metal-Look Door Panel Insert, Metal-Look Console Insert and Chrome/Metal-Look Interior Accents
- Manual Adjustable Front Head Restraints and Fixed Rear Head Restraints
- Manual Air Conditioning- Manual Tilt/Telescoping Steering Column
- Outside Temp Gauge- Power 1st Row Windows w/Driver 1-Touch Up/Down
- Power Door Locks w/Autolock Feature- Power Rear Windows- Rear Cupholder
- Remote Keyless Entry w/Integrated Key Transmitter, Illuminated Entry and Panic Button
- Remote Releases -Inc: Power Cargo Access and Mechanical Fuel
- Seats w/Cloth Back Material- Trip Computer- Urethane Gear Shift Knob

## Mechanical

- 110 Amp Alternator- 13.2 Gal. Fuel Tank
- 49-Amp/Hr 470CCA Maintenance-Free Battery w/Run Down Protection
- Brake Actuated Limited Slip Differential - Electric Power-Assist Speed-Sensing Steering
- Engine: 1.8L DOHC 16-Valve 4-Cylinder- Front And Rear Anti-Roll Bars
- Front Disc/Rear Drum Brakes w/4-Wheel ABS, Front Vented Discs and Brake Assist
- Front-Wheel Drive- Gas-Pressurized Shock Absorbers- Single Stainless Steel Exhaust
- Strut Front Suspension w/Coil Springs- Torsion Beam Rear Suspension w/Coil Springs
- Transmission w/Driver Selectable Mode- Transmission: Xtronic CVT

All vehicles are pre-owned. The e-Price is a cash price and excludes tax, title, license and \$50.00 doc fee. Prices subject to change. Contact our Sales Team for detailed information.

Foothills Auto Sales

[foothillsautosalestn.com](http://foothillsautosalestn.com)

865-980-8500

2617 Highway 411 S

Maryville, TN 37801

© 2019 AutoRevo - All rights reserved. - Powered by AutoRevo