

2833 Alpine Rd
Eau Claire, Wisconsin
54703

2016 Ram 1500 Rebel 4x4 Crew Cab with 5.7L HEMI V8, Heated Seats, Alpine Audio & Off Road Suspension

Steve Allingham

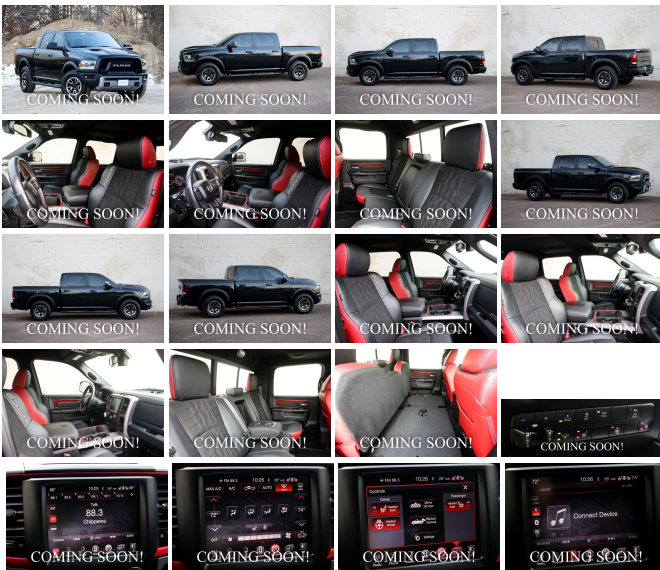
View this car on our website at capitalmotorcompany.com/6558505/ebrochure



Your Price **\$36,950**

Specifications:

Year:	2016
VIN:	1C6RR7YT7GS385230
Make:	Ram
Stock:	4609
Model/Trim:	1500 Rebel 4x4 Crew Cab with 5.7L HEMI V8, Heated Seats, Alpine Audio & Off Road Suspension
Condition:	Pre-Owned
Body:	Pickup Truck
Exterior:	Brilliant Black Crystal Pearlcoat
Engine:	5.7L V8 HEMI MDS VVT
Interior:	Red/Black
Transmission:	8-SPEED AUTOMATIC
Mileage:	20,232
Drivetrain:	4 Wheel Drive
Economy:	City 15 / Highway 21



COMING SOON...

Thank you for your interest in this 2016 Ram 1500 Rebel Crew Cab 4x4 Truck with the 5.7L HEMI V8, 8-Speed Automatic, Incredible Height Adjustable Off-Road Suspension, Toyo Open Country A/T Tires on Black and Silver 17-Inch Wheels, Touchscreen Infotainment System with Alpine Premium Audio, Streaming Bluetooth Audio, Backup Camera, Heated Steering Wheel, Heated Front Seats, Factory Remote Start, and Gorgeous 2-Tone Red and Black Interior! It has just arrived at our showroom and has not yet completed our entire pre-sale process. We will have a full description and photos very shortly. If you would like more information or would like to come see the vehicle, please call us at (715) 833-2020.

...

2016 Ram 1500 Rebel 4x4 Crew Cab with 5.7L HEMI V8, Heated Seats, Alpine Audio & Off Road Suspension
Capital Motor Company - - View this car on our website at capitalmotorcompany.com/6558505/ebrochure

Our Location :



2016 Ram 1500 Rebel 4x4 Crew Cab with 5.7L HEMI V8, Heated Seats, Alpine Audio & Off Road Suspension
Capital Motor Company - - View this car on our website at capitalmotorcompany.com/6558505/ebrochure

Installed Options

Interior

- 10-Way Power Driver Seat -inc: Power Recline, Height Adjustment, Fore/Aft Movement, Cushion Tilt and Power 2-Way Lumbar Support
- 2 Seatback Storage Pockets- 3 12V DC Power Outlets
- 3 12V DC Power Outlets and 1 AC Power Outlet
- 6-Way Power Passenger Seat -inc: Power Recline, Fore/Aft Movement and Power 2-Way Lumbar Support
- 60-40 Folding Split-Bench Front Facing Fold-Up Cushion Rear Seat - Analog Display
- Cargo Area Concealed Storage- Compass- Cruise Control w/Steering Wheel Controls
- Day-Night Rearview Mirror- Delayed Accessory Power
- Driver And Passenger Heated-Cushion, Driver And Passenger Heated-Seatback
- Electronic Shift- FOB Controls -inc: Trunk/Hatch/Tailgate and Air Suspension
- Fade-To-Off Interior Lighting- Front Center Armrest w/Storage and Rear Center Armrest
- Front Cupholder- Front Map Lights- Front Seats w/Power 2-Way Driver Lumbar
- Full Carpet Floor Covering -inc: Vinyl/Rubber Front And Rear Floor Mats
- Full Cloth Headliner
- Full Floor Console w/Covered Storage, Mini Overhead Console, 3 12V DC Power Outlets and 1 AC Power Outlet
- GPS Antenna Input
- Gauges -inc: Speedometer, Odometer, Voltmeter, Oil Pressure, Engine Coolant Temp, Tachometer, Oil Temperature, Transmission Fluid Temp, Engine Hour Meter, Trip Odometer and Trip Computer
- Glove Box- HVAC -inc: Underseat Ducts and Console Ducts
- Heated Leather Steering Wheel
- Instrument Panel Bin, Dashboard Storage, Driver / Passenger And Rear Door Bins and 2nd Row Underseat Storage

- Interior Trim -inc: Deluxe Sound Insulation, Metal-Look Instrument Panel Insert, Aluminum Door Panel Insert, Metal-Look Console Insert and Aluminum/Metal-Look Interior Accents
- Manual Adjustable Front Head Restraints and Manual Adjustable Rear Head Restraints
- Manual Air Conditioning- Manual Tilt Steering Column- Outside Temp Gauge
- Passenger Visor Vanity Mirror- Pickup Cargo Box Lights
- Power 1st Row Windows w/Driver And Passenger 1-Touch Up/Down
- Power Door Locks w/Autolock Feature- Power Rear Windows
- Premium Cloth Seats w/Emboss Tread Pattern- Rear Cupholder
- Redundant Digital Speedometer
- Remote Keyless Entry w/Integrated Key Transmitter, Illuminated Entry and Panic Button
- Sentry Key Engine Immobilizer- Systems Monitor- Trip Computer
- Urethane Gear Shift Knob- Valet Function- Vinyl Door Trim Insert

Exterior

- Black Fender Flares
- Black Front Bumper w/Metal-Look Rub Strip/Fascia Accent and 2 Tow Hooks
- Black Grille- Black Power Heated Side Mirrors w/Manual Folding
- Black Rear Step Bumper- Black Side Windows Trim and Black Front Windshield Trim
- Body-Colored Door Handles- Cargo Lamp w/High Mount Stop Light- Clearcoat Paint
- Deep Tinted Glass- Front Fog Lamps- Front License Plate Bracket
- Full-Size Spare Tire Stored Underbody w/Crankdown
- Fully Automatic Projector Beam Halogen Headlamps w/Delay-Off
- Galvanized Steel/Aluminum Panels- LED Brakelights- Power Rear Window
- Regular Box Style- Steel Spare Wheel- Tailgate Rear Cargo Access
- Tailgate/Rear Door Lock Included w/Power Door Locks- Tip Start
- Tires: LT285/70R17E BSW All Terrain- Variable Intermittent Wipers
- Wheels: 17" x 8" Aluminum w/Matte Black Pocket

Safety

- 10-Way Power Driver Seat -inc: Power Recline, Height Adjustment, Fore/Aft Movement, Cushion Tilt and Power 2-Way Lumbar Support
- 2 Seatback Storage Pockets- 3 12V DC Power Outlets
- 3 12V DC Power Outlets and 1 AC Power Outlet
- 6-Way Power Passenger Seat -inc: Power Recline, Fore/Aft Movement and Power 2-Way Lumbar Support
- 60-40 Folding Split-Bench Front Facing Fold-Up Cushion Rear Seat - Analog Display
- Cargo Area Concealed Storage- Compass- Cruise Control w/Steering Wheel Controls
- Day-Night Rearview Mirror- Delayed Accessory Power
- Driver And Passenger Heated-Cushion, Driver And Passenger Heated-Seatback
- Electronic Shift- FOB Controls -inc: Trunk/Hatch/Tailgate and Air Suspension
- Fade-To-Off Interior Lighting- Front Center Armrest w/Storage and Rear Center Armrest
- Front Cupholder- Front Map Lights- Front Seats w/Power 2-Way Driver Lumbar
- Full Carpet Floor Covering -inc: Vinyl/Rubber Front And Rear Floor Mats
- Full Cloth Headliner
- Full Floor Console w/Covered Storage, Mini Overhead Console, 3 12V DC Power Outlets and 1 AC Power Outlet
- GPS Antenna Input
- Gauges -inc: Speedometer, Odometer, Voltmeter, Oil Pressure, Engine Coolant Temp, Tachometer, Oil Temperature, Transmission Fluid Temp, Engine Hour Meter, Trip Odometer and Trip Computer
- Glove Box- HVAC -inc: Underseat Ducts and Console Ducts
- Heated Leather Steering Wheel
- Instrument Panel Bin, Dashboard Storage, Driver / Passenger And Rear Door Bins and 2nd Row Underseat Storage
- Interior Trim -inc: Deluxe Sound Insulation, Metal-Look Instrument Panel Insert, Aluminum Door Panel Insert, Metal-Look Console Insert and Aluminum/Metal-Look Interior Accents
- Manual Adjustable Front Head Restraints and Manual Adjustable Rear Head Restraints
- Manual Air Conditioning- Manual Tilt Steering Column- Outside Temp Gauge
- Passenger Visor Vanity Mirror- Pickup Cargo Box Lights
- Power 1st Row Windows w/Driver And Passenger 1-Touch Up/Down
- Power Door Locks w/Autolock Feature- Power Rear Windows
- Premium Cloth Seats w/Emboss Tread Pattern- Rear Cupholder
- Redundant Digital Speedometer
- Remote Keyless Entry w/Integrated Key Transmitter, Illuminated Entry and Panic Button
- Sentry Key Engine Immobilizer- Systems Monitor- Trip Computer
- Urethane Gear Shift Knob- Valet Function- Vinyl Door Trim Insert

Mechanical

- 1410# Maximum Payload- 160 Amp Alternator- 26 Gal. Fuel Tank- 3.92 Rear Axle Ratio
- 4-Corner Auto-Leveling Suspension
- 4-Wheel Disc Brakes w/4-Wheel ABS, Front Vented Discs, Brake Assist and Hill Hold Control

- 50 State Emissions- 730CCA Maintenance-Free Battery- Auto Locking Hubs
- Automatic w/Driver Control Height Adjustable Automatic w/Driver Control Ride Control Suspension
- Bilstein Brand Name Shock Absorbers
- Class IV Towing Equipment -inc: Harness, Hitch and Trailer Sway Control
- Electric Power-Assist Steering- Electronic Transfer Case- Engine Oil Cooler
- Engine: 3.6L V6 24V VVT -inc: Flex fuel capable- Front And Rear Anti-Roll Bars
- GVWR: 6,800 lbs- Multi-Link Rear Suspension w/Air Springs
- Part-Time Four-Wheel Drive- Short And Long Arm Front Suspension w/Air Springs
- Single Stainless Steel Exhaust- Transmission w/Driver Selectable Mode and Oil Cooler
- Transmission: 8-Speed Automatic (845RE)

Option Packages

Factory Installed Packages

ENGINE: 5.7L V8 HEMI MDS VVT

-inc: Electronically Controlled Throttle, Hemi Badge, Next Generation Engine Controller, Heavy Duty Engine Cooling, Heavy Duty Transmission Oil Cooler

\$1,150

TRANSMISSION: 8-SPEED AUTOMATIC (8HP70)

\$500

9 ALPINE SPEAKERS W/SUBWOOFER

\$345

KEYLESS GO

-inc: Remote Proximity Keyless Entry

\$300

LUXURY GROUP

-inc: LED Bed Lighting, Overhead Console w/Garage Door Opener, Universal Garage Door Opener, Sun Visors w/Illuminated Vanity Mirrors, Exterior Mirrors Courtesy Lamps, Glove Box Lamp, Underhood Lamp, Auto Dim Exterior Mirrors, Exterior Mirrors w/Supplemental Signals, Rear Dome w/On/Off Switch Lamp, Rear View Auto Dim Mirror w/Microphone, Power Heated Fold-Away Mirrors, Power Folding Mirrors

\$695

PARKVIEW REAR BACK-UP CAMERA

\$245

RADIO: UCONNECT 8.4

-inc: Nav-Capable! See Dealer for Details, 6 Month Trial (Registration Required), Media Hub (SD, USB, AUX), Uconnect Access, 8.4" Touchscreen Display, 6 Month Trial (Reg, Required), For Details Visit DriveUconnect.com, Remote SD Card Slot

\$505

REAR CAMERA & PARK ASSIST GROUP

-inc: ParkView Rear Back-Up Camera, Rear View Auto Dim Mirror w/Display, ParkSense Rear Park Assist System

\$595

REMOTE START & SECURITY ALARM GROUP

\$395

-
TRAILER BRAKE CONTROL
\$280

-
TRAILER TOW MIRRORS & BRAKE
GROUP
-inc: Power Black Trailer Tow
Mirrors, Trailer Brake Control,
Trailer Tow Mirrors, Exterior
Mirrors Courtesy Lamps,
Exterior Mirrors
w/Supplemental Signals \$460

-
Option Packages Total
\$5,470

All vehicles are pre-owned. The e-Price is a cash price and excludes tax, title, license and \$50.00 doc fee. Prices subject to change. Contact our Sales Team for detailed information.

Capital Motor Company
capitalmotorcompany.com
2833 Alpine Rd
Eau Claire, Wisconsin 54703

© 2019 AutoRevo - All rights reserved. - Powered by AutoRevo