



2017 Ford Super Duty F-250 Pickup XLT

Our No-Haggle Price \$28,997

Book Retail Value \$35,995

View this vehicle on our website at leesburgautoimport.com

Leesburg Auto Import

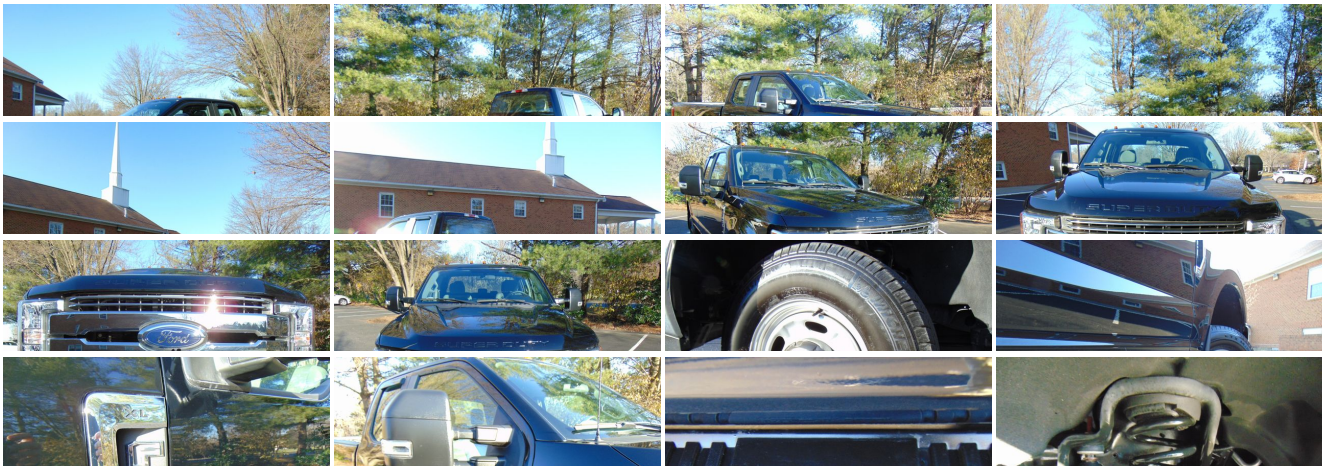
Toll Free: 1-866-249-5348, Local: 703-771-7600

2 Fairfax St SE, Leesburg, Virginia 20175

Photos

Details

Contact





Specifications:

Year:	2017
VIN:	1FT7X2B60HEE61737
Make:	Ford
Stock:	E61737
Model/Trim:	Super Duty F-250 Pickup XLT
Condition:	Pre-Owned
Body:	Pickup Truck
Exterior:	BLACK
Engine:	ENGINE: 6.2L 2-VALVE SOHC EFI NA V8 FLEX-FUEL
Interior:	Gray Cloth
Mileage:	11,387

Vehicle Description

Welcome to Leesburg Auto Import, the home of the best used cars in the east coast. We pride ourselves on our competitive and unbeatable prices. We buy cars and accept trade in.

Installed Options

Interior

- Cloth 40/20/40 Split Bench Seat -inc: 20% locking center under-seat storage, center armrest, cupholder, storage, 4-way adjustable driver/passenger headrests and driver's side manual lumbar
- Driver And Passenger Visor Vanity Mirrors
- Full Carpet Floor Covering -inc: Carpet Front And Rear Floor Mats
- Gauges -inc: Speedometer, Odometer, Oil Pressure, Engine Coolant Temp, Tachometer, Transmission Fluid Temp, Engine Hour Meter, Trip Odometer and Trip Computer
- Perimeter Alarm- Power 1st Row Windows w/Driver And Passenger 1-Touch Up/Down
- Power Door Locks- Power Rear Windows
- Remote Keyless Entry w/Integrated Key Transmitter, Illuminated Entry and Panic Button
- Securilock Anti-Theft Ignition (pats) Engine Immobilizer- Trip Computer
- 2 Seatback Storage Pockets- 3 12V DC Power Outlets
- 4-Way Driver Seat -inc: Manual Recline and Fore/Aft Movement
- 4-Way Passenger Seat -inc: Manual Recline and Fore/Aft Movement
- 60-40 Folding Split-Bench Front Facing Fold-Up Cushion Rear Seat - Air Filtration
- Analog Display- Cruise Control w/Steering Wheel Controls- Day-Night Rearview Mirror
- Delayed Accessory Power- Fade-To-Off Interior Lighting- Front Map Lights
- Full Cloth Headliner- Full Overhead Console w/Storage and 3 12V DC Power Outlets
- HVAC -inc: Underseat Ducts- Illuminated Locking Glove Box
- Instrument Panel Bin, Covered Dashboard Storage, Driver / Passenger And Rear Door Bins
- Interior Trim -inc: Metal-Look Instrument Panel Insert and Chrome Interior Accents
- Manual Adjustable Rear Head Restraints- Manual Air Conditioning
- Manual Tilt/Telescoping Steering Column- Outside Temp Gauge- Rear Cupholder
- Systems Monitor- Underhood And Pickup Cargo Box Lights- Urethane Gear Shift Knob

Exterior

- Black Power Heated Side Mirrors w/Convex Spotter, Manual Folding and Turn Signal Indicator
- Fully Automatic Aero-Composite Halogen Daytime Running Lights Preference Setting Headlamps w/Delay-Off
- Privacy Glass- Tailgate/Rear Door Lock Included w/Power Door Locks
- Tires: LT275/65Rx18E BSW A/S- Variable Intermittent Wipers
- Wheels: 18" Sparkle Silver Painted Cast Aluminum -inc: bright hub covers/center ornaments
- Aluminum Panels- Black Door Handles- Black Grille w/Chrome Accents
- Black Side Windows Trim and Black Front Windshield Trim

Option Packages

Factory Installed Packages

ENGINE: 6.2L 2-VALVE SOHC EFI NA V8 FLEX-FUEL

- Cargo Lamp w/High Mount Stop Light
- Chrome Front Bumper w/Body-Colored Rub Strip/Fascia Accent and 2 Tow Hooks
- Chrome Rear Step Bumper- Clearcoat Paint- Fixed Rear Window
- Front License Plate Bracket- Full-Size Spare Tire Stored Underbody w/Crankdown
- Manual Extendable Trailer Style Mirrors- Perimeter/Approach Lights- Regular Box Style
- Reverse Opening Rear Doors- Steel Spare Wheel- Tailgate Rear Cargo Access

Safety

- Cloth 40/20/40 Split Bench Seat -inc: 20% locking center under-seat storage, center armrest, cupholder, storage, 4-way adjustable driver/passenger headrests and driver's side manual lumbar
- Driver And Passenger Visor Vanity Mirrors
- Full Carpet Floor Covering -inc: Carpet Front And Rear Floor Mats
- Gauges -inc: Speedometer, Odometer, Oil Pressure, Engine Coolant Temp, Tachometer, Transmission Fluid Temp, Engine Hour Meter, Trip Odometer and Trip Computer
- Perimeter Alarm- Power 1st Row Windows w/Driver And Passenger 1-Touch Up/Down
- Power Door Locks- Power Rear Windows
- Remote Keyless Entry w/Integrated Key Transmitter, Illuminated Entry and Panic Button
- Securilock Anti-Theft Ignition (pats) Engine Immobilizer- Trip Computer
- 2 Seatback Storage Pockets- 3 12V DC Power Outlets
- 4-Way Driver Seat -inc: Manual Recline and Fore/Aft Movement
- 4-Way Passenger Seat -inc: Manual Recline and Fore/Aft Movement
- 60-40 Folding Split-Bench Front Facing Fold-Up Cushion Rear Seat - Air Filtration
- Analog Display- Cruise Control w/Steering Wheel Controls- Day-Night Rearview Mirror
- Delayed Accessory Power- Fade-To-Off Interior Lighting- Front Map Lights
- Full Cloth Headliner- Full Overhead Console w/Storage and 3 12V DC Power Outlets
- HVAC -inc: Underseat Ducts- Illuminated Locking Glove Box
- Instrument Panel Bin, Covered Dashboard Storage, Driver / Passenger And Rear Door Bins
- Interior Trim -inc: Metal-Look Instrument Panel Insert and Chrome Interior Accents
- Manual Adjustable Rear Head Restraints- Manual Air Conditioning
- Manual Tilt/Telescoping Steering Column- Outside Temp Gauge- Rear Cupholder
- Systems Monitor- Underhood And Pickup Cargo Box Lights- Urethane Gear Shift Knob

Mechanical

- Class V Towing Equipment -inc: Harness, Hitch, Brake Controller and Trailer Sway Control
- Transmission: TorqShift-G 6-Spd Auto w/SelectShift- 3.73 Axle Ratio
- 34 Gal. Fuel Tank- 3560# Maximum Payload
- 4-Wheel Disc Brakes w/4-Wheel ABS, Front And Rear Vented Discs, Brake Assist and Hill Hold Control
- 50-State Emissions System
- 78-Amp/Hr 750CCA Maintenance-Free Battery w/Run Down Protection
- Engine: 6.2L 2-Valve SOHC EFI NA V8 Flex-Fuel- Firm Suspension
- Front Anti-Roll Bar- Front Suspension w/Coil Springs
- GVWR: 10,000 lb Payload Package- HD Shock Absorbers
- Hydraulic Power-Assist Steering- Leaf Rear Suspension w/Leaf Springs
- Manual Locking Hubs- Manual Transfer Case- Part-Time Four-Wheel Drive
- Single Stainless Steel Exhaust- Transmission w/Oil Cooler

Price excludes \$599.00 processing fee, registration fees and state and local sales taxes. 3% surcharge will be added on all CC charges over \$500.00. Deposits are non-refundable. All our sales are based on first-come-first-serve policy. We work very hard to accurately describe our vehicles through text descriptions and elaborate photos. When you purchase a pre-owned vehicle it is not a new vehicle. Any used vehicle can have normal wear and blemishes. Please read the descriptions thoroughly and view all pictures.

Leesburg Auto Import

Leesburg Auto Import

View this car on our website at leesburgautoimport.com/6558045

Website: leesburgautoimport.com

Phone: Toll Free: 1-866-249-5348, Local: 703-771-7600

Map: [2 Fairfax St SE, Leesburg, Virginia 20175](#)

