



2011 GMC Yukon XL Denali DENALI

Our No-Haggle Price \$20,587

Book Retail Value \$24,975

View this vehicle on our website at leesburgautoimport.com

Leesburg Auto Import

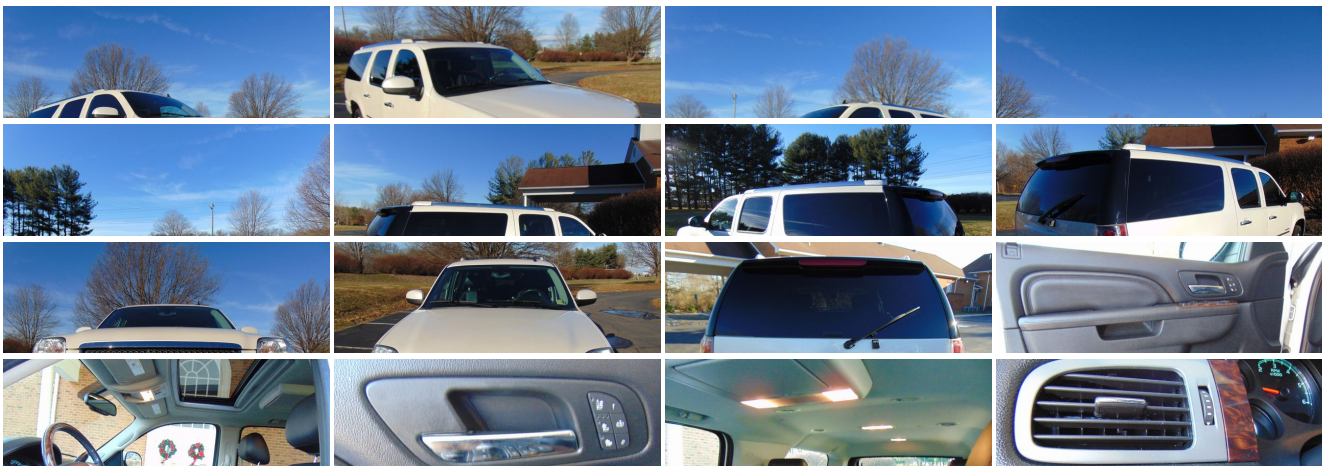
Toll Free: 1-866-249-5348, Local: 703-771-7600

2 Fairfax St SE , Leesburg, Virginia 20175

Photos

Details

Contact





Specifications:

Year:	2011
VIN:	1GKS2MEFXBR327175
Make:	GMC
Stock:	L327175
Model/Trim:	Yukon XL Denali DENALI
Condition:	Pre-Owned
Body:	SUV
Exterior:	WHITE
Engine:	ENGINE, VORTEC 6.2L VARIABLE VALVE TIMING V8 SFI , ACTIVE FUEL MANAGEMENT
Interior:	Leather
Mileage:	95,848
Drivetrain:	All Wheel Drive
Economy:	City 13 / Highway 18

Vehicle Description

Welcome to Leesburg Auto Import, the home of the best used cars in the east coast. We pride ourselves on our competitive and unbeatable prices. We buy cars and accept trade in.

Installed Options

Interior

- Seats, front bucket with leather-appointed seating, 10-way power driver and front passenger seat adjusters including power lumbar control, power recline, heated seat cushion and seatbacks, 2-position driver memory, adjustable head restraints, storage pockets and floor console.
- Seats, second row captain's chairs with leather-appointed seating 2 reclining bucket seats
- Seat adjuster, driver power- Seat adjuster, front passenger power
- Seats, heated and cooled driver and front passenger seat cushions and seat backs with perforated leather-appointed seating
- Console, floor with storage area, cup holders and integrated second row audio and HVAC controls
- Floor mats, color-keyed carpeted first and second row, removable
- Steering wheel controls, mounted audio and cruise controls includes Driver Information Center controls located on instrument panel
- Tow/haul mode selector, button located at end of shift lever
- Door locks, power programmable with lockout protection
- Cruise control, electronic with set and resume speed
- Remote vehicle starter system includes Remote Keyless Entry
- Air conditioning, tri-zone automatic climate control with individual climate settings for driver and right front passenger
- Air conditioning, rear auxiliary
- Power outlets, 5 auxiliary, 12-volt includes 2 on the instrument panel, 1 in the cargo area, 1 inside the center console and 1 at the back of the console
- Lighting, interior with dome light, driver- and passenger-side door switch with delayed entry feature, cargo lights, door handle or Remote Keyless Entry-activated illuminated entry and map lights in front and second seat positions
- Mirror, inside rearview auto-dimming- Console, overhead mini with map lights
- Seats, heated second row
- Seat release, power seat release only, second row bench or bucket
- Cup holders, in front seating area
- Cup holders, driver and passenger-side in third row side trim
- Cup holders, in rear of floor console- Floor covering, color-keyed carpeting
- Steering column, power Tilt-Wheel, adjustable with brake/transmission shift interlock
- Steering wheel, Deluxe, leather-wrapped- Steering wheel, heated

Option Packages

Factory Installed Packages

ENGINE, VORTEC 6.2L VARIABLE VALVE TIMING V8 SFI , ACTIVE FUEL MANAGEMENT
 with E85 FlexFuel capability (403 hp [300.5 kW]
 @ 5700 rpm, 417 lb-ft of torque [562.9 N-m] @
 4300 rpm)

- Driver Information Center, full-functionality included with temperature and compass
- Instrumentation, analog with speedometer, odometer with trip odometer, fuel level, voltmeter, engine temperature, oil pressure, tachometer, compass and outside temperature gauge
- Warning tones headlamp on, key-in-ignition, driver and passenger buckle up reminder and turn signal on
- Windows, power with driver Express-Down and lockout features
- Universal Home Remote includes garage door opener, programmable
- Pedals, power-adjustable for accelerator and brake (Includes memory function with (AN3) front bucket seats.)
- XM NavTraffic is available in over 80 markets and works with your vehicle's navigation system to give you real-time traffic data right when you need it most - while you're driving. You'll avoid traffic tie-ups, save time and gas by getting alternate routes, and, in some cases, receive traffic speed and drive time information. Plus, you can use XM NavTraffic at the same time you're enjoying XM Radio. You'll find that once you start using XM NavTraffic, you won't want to drive without it (Includes 3 trial months. Included and only available with (UJL) Audio system with Navigation or (UJK) Audio system with Rear Seat Entertainment and Navigation. Requires a subscription sold separately by XM after trial period. Available only in select markets. For more information, see xmradio.com/navtraffic.)
- Heater, rear auxiliary with rear passenger heating ducts - Defogger, rear-window electric
- Theft-deterrent system, vehicle, PASS-Key III - Door trim, side reflectors on rear doors
- Armrests, driver and passenger doors, padded
- Visors, driver and front passenger illuminated vanity mirrors, padded with cloth trim, extends on rod, includes corner storage pockets on back of visors, Shale-colored
- Assist handles, front passenger and second row outboard
- Coat hooks, driver- and passenger-side rear seat and cargo area
- Storage bin, behind driver-side rear quarter panel- Cargo mat

Exterior

- Wheels, 4 - 20" x 8.5" (50.8 cm x 21.6 cm) chrome aluminum
- Tires, P275/55R20 all-season, blackwall- Luggage rack side rails, roof-mounted, Black
- Luggage rack center rails
- Assist steps, Black with chrome insert, mounted between the front and rear wheels
- Wheel, 17" (43.2 cm) full-size steel spare
- Tire carrier, lockable outside spare, winch-type mounted under frame at rear
- Tire, spare P265/70R17 all-season, blackwall- Fascia, front color-keyed
- Fascia, rear color-keyed- Moldings, body-color bodyside with bright inserts
- Grille, chrome surround
- Headlamps, dual halogen composite with automatic exterior lamp control and flash-to-pass feature
- Fog lamps, front round halogen
- Mirrors, outside heated power-adjustable, power-folding and driver-side auto-dimming, bodycolor with integrated turn signal indicators, ground illumination and curb-tilt (Includes memory function with (AN3) front bucket seats.)
- Glass, Solar-Ray deep-tinted (all windows except light-tinted glass on windshield and driver and front passenger-side glass)
- Wipers, front intermittent wet-arm with flat blade and pulse washers
- Liftgate with liftglass, rear door system with rear-window wiper/washer
- Liftgate, rear power-operated controlled from front overhead console, remote key fob or button inside liftgate
- Wiper, rear intermittent with washer

Safety

- Seats, front bucket with leather-appointed seating, 10-way power driver and front passenger seat adjusters including power lumbar control, power recline, heated seat cushion and seatbacks, 2-position driver memory, adjustable head restraints, storage pockets and floor console.
- Seats, second row captain's chairs with leather-appointed seating 2 reclining bucket seats
- Seat adjuster, driver power- Seat adjuster, front passenger power
- Seats, heated and cooled driver and front passenger seat cushions and seat backs with perforated leather-appointed seating
- Console, floor with storage area, cup holders and integrated second row audio and HVAC controls
- Floor mats, color-keyed carpeted first and second row, removable
- Steering wheel controls, mounted audio and cruise controls includes Driver Information Center controls located on instrument panel
- Tow/haul mode selector, button located at end of shift lever
- Door locks, power programmable with lockout protection
- Cruise control, electronic with set and resume speed
- Remote vehicle starter system includes Remote Keyless Entry
- Air conditioning, tri-zone automatic climate control with individual climate settings for driver and right front passenger
- Air conditioning, rear auxiliary
- Power outlets, 5 auxiliary, 12-volt includes 2 on the instrument panel, 1 in the cargo area, 1 inside the center console and 1 at the back of the console

- Lighting, interior with dome light, driver- and passenger-side door switch with delayed entry feature, cargo lights, door handle or Remote Keyless Entry-activated illuminated entry and map lights in front and second seat positions
- Mirror, inside rearview auto-dimming- Console, overhead mini with map lights
- Seats, heated second row
- Seat release, power seat release only, second row bench or bucket
- Cup holders, in front seating area
- Cup holders, driver and passenger-side in third row side trim
- Cup holders, in rear of floor console - Floor covering, color-keyed carpeting
- Steering column, power Tilt-Wheel, adjustable with brake/transmission shift interlock
- Steering wheel, Deluxe, leather-wrapped- Steering wheel, heated
- Driver Information Center, full-functionality included with temperature and compass
- Instrumentation, analog with speedometer, odometer with trip odometer, fuel level, voltmeter, engine temperature, oil pressure, tachometer, compass and outside temperature gauge
- Warning tones headlamp on, key-in-ignition, driver and passenger buckle up reminder and turn signal on
- Windows, power with driver Express-Down and lockout features
- Universal Home Remote includes garage door opener, programmable
- Pedals, power-adjustable for accelerator and brake (Includes memory function with (AN3) front bucket seats.)
- XM NavTraffic is available in over 80 markets and works with your vehicle's navigation system to give you real-time traffic data right when you need it most - while you're driving. You'll avoid traffic tie-ups, save time and gas by getting alternate routes, and, in some cases, receive traffic speed and drive time information. Plus, you can use XM NavTraffic at the same time you're enjoying XM Radio. You'll find that once you start using XM NavTraffic, you won't want to drive without it (Includes 3 trial months. Included and only available with (UJL) Audio system with Navigation or (UJK) Audio system with Rear Seat Entertainment and Navigation. Requires a subscription sold separately by XM after trial period. Available only in select markets. For more information, see xmradio.com/navtraffic.)
- Heater, rear auxiliary with rear passenger heating ducts - Defogger, rear-window electric
- Theft-deterrent system, vehicle, PASS-Key III - Door trim, side reflectors on rear doors
- Armrests, driver and passenger doors, padded
- Visors, driver and front passenger illuminated vanity mirrors, padded with cloth trim, extends on rod, includes corner storage pockets on back of visors, Shale-colored
- Assist handles, front passenger and second row outboard
- Coat hooks, driver- and passenger-side rear seat and cargo area
- Storage bin, behind driver-side rear quarter panel- Cargo mat

Mechanical

- Transmission, 6-speed automatic, heavy-duty, electronically controlled with overdrive, tow/haul mode and tap up/tap down shifting
- All-wheel drive
- Transfer case, AWD, electronic automatic system (Not available on 2WD models.)
- Engine, Vortec 6.2L Variable Valve Timing V8 SFI , Active Fuel Management with E85 FlexFuel capability (403 hp [300.5 kW] @ 5700 rpm, 417 lb-ft of torque [562.9 N-m] @ 4300 rpm)
- Rear axle, 3.42 ratio- Differential, heavy-duty locking rear
- Trailing equipment, heavy-duty includes trailing hitch platform, 7-wire harness with independent fused trailing circuits mated to a 7-way sealed connector and (VR4) 2" trailing receiver
- Cooling, external engine oil cooler, heavy-duty air-to-oil, integral to driver-side of radiator
- Cooling, auxiliary external transmission oil cooler, heavy-duty air-to-oil
- Recovery hooks, 2 front, frame-mounted- Alternator, 160 amps
- GVWR, 7400 lbs. (3357 kg) (Not available on 2WD models.)
- Suspension, front coil-over-shock with stabilizer bar
- Suspension, rear multi-link with coil springs- Steering, power
- Brakes, 4-wheel antilock, 4-wheel disc
- Exhaust, aluminized stainless-steel muffler and tailpipe
- Tools, mechanical jack and wheel wrench, stored in rear quarter trim

Price excludes \$599.00 processing fee, registration fees and state and local sales taxes. 3% surcharge will be added on all CC charges over \$500.00. Deposits are non-refundable. All our sales are based on first-come-first-serve policy. We work very hard to accurately describe our vehicles through text descriptions and elaborate photos. When you purchase a pre-owned vehicle it is not a new vehicle. Any used vehicle can have normal wear and blemishes. Please read the descriptions thoroughly and view all pictures.

Leesburg Auto Import

Leesburg Auto Import

View this car on our website at leesburgautoimport.com/6557254

Website: leesburgautoimport.com

Phone: Toll Free: 1-866-249-5348, Local: 703-771-7600

