



## 2007 Honda CR-V EX-L

**NO HAGGLE CASH PRICE! \$7,588**

**Average Retail Price \$9,325**

View this vehicle on our website at [sterlingmotorsport.com](http://sterlingmotorsport.com)

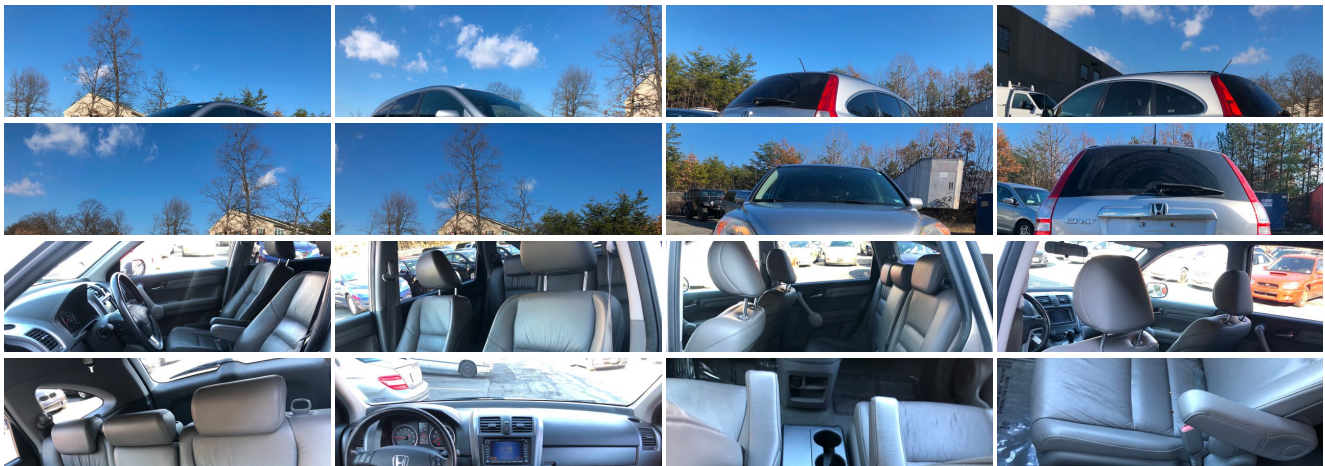
[571-313-1989](tel:571-313-1989)

9 Douglas Court Unit 101, Sterling, VA 20166

Photos

Details

Contact





## Specifications:

<b>Year:</b>	2007
<b>VIN:</b>	JHLRE48787C028867
<b>Make:</b>	Honda
<b>Stock:</b>	028867
<b>Model/Trim:</b>	CR-V EX-L
<b>Condition:</b>	Pre-Owned
<b>Body:</b>	SUV
<b>Exterior:</b>	SILVER
<b>Engine:</b>	2.4L DOHC MPFI 16-valve i-VTEC I4 engine
<b>Interior:</b>	Leather
<b>Mileage:</b>	118,098
<b>Drivetrain:</b>	All Wheel Drive
<b>Economy:</b>	City 22 / Highway 28

## Vehicle Description

# Installed Options

## Interior

- Pwr door & tailgate locks- Remote keyless entry system
- Reclining leather heated front bucket seats w/adjustable active head restraints, leather armrests
- Driver seat manual height adjustment
- Reclining 60/40 split sliding fold & tumble forward rear seats-inc: active head restraints, 40/20/40 reclining seatbacks w/center pass-through
- Multi-functional center console w/storage- Floor mats- (8) front/rear beverage holders
- Leather-wrapped steering wheel w/audio controls- Tilt & telescopic steering column
- Immobilizer theft-deterrent system
- Instrument panel w/white and blue back-lit gauges-inc: digital odometer, (2) digital trip meters, Maintenance Minder system, outside temp display
- Indicator lights-inc: low fuel, low-oil pressure, door/tailgate open, average fuel consumption, miles-to-empty
- Tire pressure monitoring system (TPMS)- Pwr windows w/driver-side auto-up/down
- Cruise control- Remote fuel filler door release- Security system
- Air conditioning w/air-filtration system- Rear seat heater ducts- Rear window defroster
- AM/FM/XM stereo w/6-disc in-dash CD/MP3/WMA changer-inc: 160-watt, aux input jack, speed-sensitive volume control (SVC), CD text display capability (6) speakers
- Upper/lower glove compartments- Front/center console/rear 12V auxiliary pwr outlets
- Conversation mirror w/sunglasses holder- Dual visor vanity mirrors
- Driver-side garment hook- Map lights- Ambient console lighting- Cargo area light
- Instrument panel-mounted leather-wrapped shifter- Under seat storage bin
- Door-pocket storage bins- (4) cargo tie-downs- Dual-deck cargo shelf

## Exterior

- Daytime running lights (DRL)- One-touch pwr moonroof w/tilt feature
- Chrome accent grille- Multi-reflector halogen headlamps- Full-length taillights
- Body-color folding pwr heated mirrors- Heat-rejecting green-tinted glass
- Rear privacy glass- Chrome window trim- Variable intermittent windshield wipers
- Rear intermittent wiper w/washer- Chrome rear license trim- Body-color door handles

## Safety

- Pwr door & tailgate locks- Remote keyless entry system
- Reclining leather heated front bucket seats w/adjustable active head restraints, leather armrests
- Driver seat manual height adjustment
- Reclining 60/40 split sliding fold & tumble forward rear seats-inc: active head restraints, 40/20/40 reclining seatbacks w/center pass-through
- Multi-functional center console w/storage- Floor mats- (8) front/rear beverage holders
- Leather-wrapped steering wheel w/audio controls- Tilt & telescopic steering column
- Immobilizer theft-deterrent system
- Instrument panel w/white and blue back-lit gauges-inc: digital odometer, (2) digital trip meters, Maintenance Minder system, outside temp display
- Indicator lights-inc: low fuel, low-oil pressure, door/tailgate open, average fuel consumption, miles-to-empty
- Tire pressure monitoring system (TPMS)- Pwr windows w/driver-side auto-up/down
- Cruise control- Remote fuel filler door release- Security system
- Air conditioning w/air-filtration system- Rear seat heater ducts- Rear window defroster
- AM/FM/XM stereo w/6-disc in-dash CD/MP3/WMA changer-inc: 160-watt, aux input jack, speed-sensitive volume control (SVC), CD text display capability (6) speakers
- Upper/lower glove compartments- Front/center console/rear 12V auxiliary pwr outlets
- Conversation mirror w/sunglasses holder- Dual visor vanity mirrors
- Driver-side garment hook- Map lights- Ambient console lighting- Cargo area light
- Instrument panel-mounted leather-wrapped shifter- Under seat storage bin
- Door-pocket storage bins- (4) cargo tie-downs- Dual-deck cargo shelf

## Mechanical

- Vehicle stability assist (VSA) w/traction control
- Anti-lock braking system (ABS) w/electronic brake distribution (EBD)- Brake assist
- 2.4L DOHC MPFI 16-valve i-VTEC I4 engine - Drive-by-wire throttle
- 5-speed automatic transmission w/OD- Real-Time 4-wheel drive
- Advanced compatibility engineering (ACE) body structure
- Independent MacPherson strut front suspension- Independent multi-link rear suspension
- Front/rear stabilizer bars- P225/65R17 all-season tires- 17" alloy wheels
- Variable pwr rack-and-pinion steering- Pwr front ventilated/rear solid disc brakes

Price excludes \$699.00 processing fee, registration fees and State and Local sales taxes. 3% surcharge will be added on all CC charges over \$500.00. Deposits are non-refundable. All our sales are based on first-come-first-serve policy. We work very hard to accurately describe our vehicles through text descriptions and elaborate photos. When you purchase a pre-owned vehicle it is not a new vehicle. Any used vehicle can have normal wear and blemishes. Please read the descriptions thoroughly and view all pictures.

Sterling Motorsport

Sterling Motorsport

View this car on our website at [sterlingmotorsport.com/6556246](https://sterlingmotorsport.com/6556246)

Website: [sterlingmotorsport.com](https://sterlingmotorsport.com)

Phone: 571-313-1989

Map: 9 Douglas Court Unit 101, Sterling, VA 20166

